

KANSAS CORPORATION COMMISSION
OIL & GAS CONSERVATION DIVISION

TEMPORARY ABANDONMENT WELL APPLICATION

OPERATOR: License#
Name:
Address 1:
Address 2:
City: State: Zip:
Contact Person:
Phone:
Contact Person Email:
Field Contact Person:
Field Contact Person Phone:

API No. 15-
Spot Description:
Sec. Twp. S. R.
GPS Location: Lat: Long:
Datum: NAD27 NAD83 WGS84
County: Elevation:
Lease Name: Well #:
Well Type: Oil Gas OG WSW Other:
SWD Permit #: ENHR Permit #:
Gas Storage Permit #:
Spud Date: Date Shut-In:

Table with 7 columns: Conductor, Surface, Production, Intermediate, Liner, Tubing. Rows include Size, Setting Depth, Amount of Cement, Top of Cement, Bottom of Cement.

Casing Fluid Level from Surface: How Determined? Date:
Casing Squeeze(s): to w / sacks of cement, to w / sacks of cement. Date:
Do you have a valid Oil & Gas Lease? Yes No
Depth and Type: Junk in Hole at Tools in Hole at Casing Leaks: Yes No Depth of casing leak(s):
Type Completion: ALT. I ALT. II Depth of: DV Tool: w / sacks of cement Port Collar: w / sack of cement
Packer Type: Size: Inch Set at: Feet
Total Depth: Plug Back Depth: Plug Back Method:

Geological Data:

Table with 4 columns: Formation Name, Formation Top, Formation Base, Completion Information. Rows 1 and 2.

UNDER PENALTY OF PERJURY I HEREBY ATTEST THAT THE INFORMATION CONTAINED HEREIN IS TRUE AND CORRECT TO THE BEST OF MY KNOWLEDGE

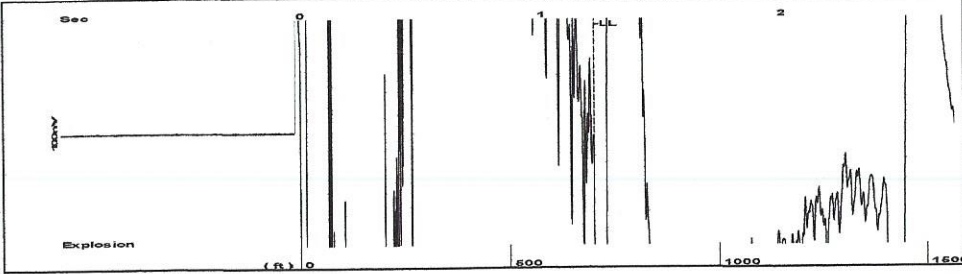
Submitted Electronically

Do NOT Write in This Space - KCC USE ONLY
Date Tested: Results: Date Plugged: Date Repaired: Date Put Back in Service:
Review Completed by: Comments:
TA Approved: Yes Denied Date:

Mail to the Appropriate KCC Conservation Office:

Table with 2 columns: Office Address, Phone. Rows for District Office #1, #2, #3, #4.

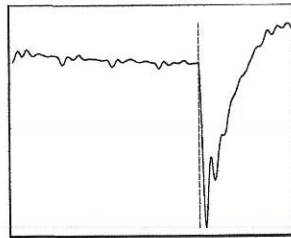
Group: Belpre Well: Hammeke 1-3 (acquired on: 09/13/21 10:44:02)



Time 1.218 sec
 Joints 22.8053 Jts
 Depth 700.35 ft

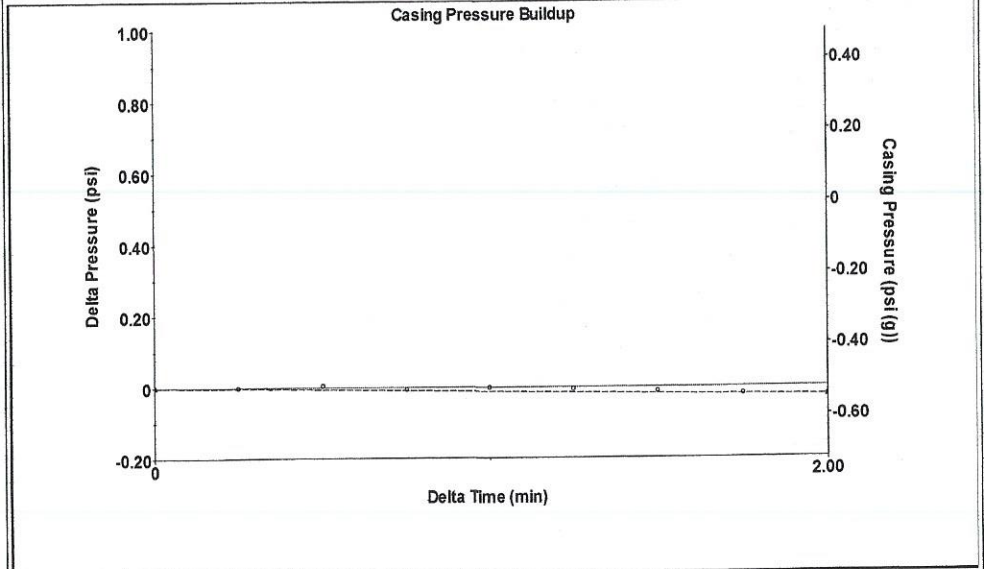
Liquid level calculated with user supplied Acoustic Velocity

Acoustic Velocity 1150 ft/s



Analysis Method: Acoustic Velocity

Group: Belpre Well: Hammeke 1-3 (acquired on: 09/13/21 10:44:02)



Change in Pressure -0.03 psi PT13440
 Range 0 - ? psi
 Change in Time 2.00 min

Group: Belpre Well: Hammeke 1-3 (acquired on: 09/13/21 10:44:02)

Production
 Current Potential
 Oil - * - - * - BBL/D
 Water - * - - * - BBL/D
 Gas - * - - * - Mscf/D

IPR Method Vogel
 PBHP/SBHP - * -
 Production Efficiency 0.0

Oil 40 deg.API
 Water 1.05 Sp.Gr.H2O
 Gas 0.85 Sp.Gr.AIR

Acoustic Velocity 1150 ft/s

Casing Pressure -0.5 psi (g)
 Casing Pressure Buildup 2.00 min
 Gas/Liquid Interface Pressure -0.2 psi (g)

Liquid Level Depth 700.35 ft

Pump Intake Depth 4330.00 ft
 Formation Depth 4327.00 ft

Formation Submergence
 Total Gaseous Liquid Column HT (TVD) 3630 ft
 Equivalent Gas Free Liquid HT (TVD) 3630 ft

Acoustic Test



Producing
 Annular Gas Flow 0 Mscf/D
 % Liquid 100 %

Pump Intake 1182.0 psi (g)
 Producing BHP 1181.1 psi (g)
 Static BHP - * - psi (g)

Group: Belpre Well: Hammeke 1-3 (acquired on: 09/13/21 10:44:02)

Entered Acoustic Velocity for Liquid Level depth determination

September 16, 2021

Loveness Mpanje
F. G. Holl Company L.L.C.
9431 E CENTRAL STE 100
WICHITA, KS 67206-2563

Re: Temporary Abandonment
API 15-047-20046-00-01
HAMMEKE 1
SE/4 Sec.03-24S-17W
Edwards County, Kansas

Dear Loveness Mpanje:

"Your temporary abandonment (TA) application for the well listed above has been approved. In accordance with K.A.R. 82-3-111 the TA status of this well will expire 09/16/2022.

- * If you return this well to service or plug it, please notify the District Office.
- * If you sell this well you are required to file a Transfer of Operator form, T-1.
- * If the well will remain temporarily abandoned, you must submit a new TA application, CP-111, before 09/16/2022.

You may contact me at the number above if you have questions.

Very truly yours,

Michael Maier"