

KANSAS CORPORATION COMMISSION
OIL & GAS CONSERVATION DIVISION

Form must be Typed
Form must be signed

TEMPORARY ABANDONMENT WELL APPLICATION

All blanks must be complete

OPERATOR: License#
Name:
Address 1:
Address 2:
City: State: Zip:
Contact Person:
Phone:
Contact Person Email:
Field Contact Person:
Field Contact Person Phone:

API No. 15-
Spot Description:
Sec. Twp. S. R.
feet from N / S Line of Section
feet from E / W Line of Section
GPS Location: Lat: , Long:
Datum: NAD27 NAD83 WGS84
County: Elevation: GL KB
Lease Name: Well #:
Well Type: (check one) Oil Gas OG WSW Other:
SWD Permit #: ENHR Permit #:
Gas Storage Permit #:
Spud Date: Date Shut-In:

Table with 7 columns: Conductor, Surface, Production, Intermediate, Liner, Tubing. Rows include Size, Setting Depth, Amount of Cement, Top of Cement, Bottom of Cement.

Casing Fluid Level from Surface: How Determined? Date:
Casing Squeeze(s): to w / sacks of cement, to w / sacks of cement. Date:
Do you have a valid Oil & Gas Lease? Yes No
Depth and Type: Junk in Hole at Tools in Hole at Casing Leaks: Yes No Depth of casing leak(s):
Type Completion: ALT. I ALT. II Depth of: DV Tool: w / sacks of cement Port Collar: w / sack of cement
Packer Type: Size: Inch Set at: Feet
Total Depth: Plug Back Depth: Plug Back Method:

Geological Data:

Table with 4 columns: Formation Name, Formation Top, Formation Base, Completion Information. Rows 1 and 2.

UNDER PENALTY OF PERJURY I HEREBY ATTEST THAT THE INFORMATION CONTAINED HEREIN IS TRUE AND CORRECT TO THE BEST OF MY KNOWLEDGE

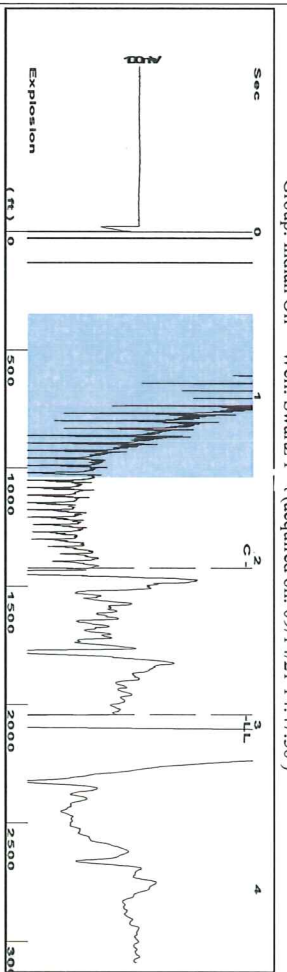
Submitted Electronically

Do NOT Write in This Space - KCC USE ONLY
Date Tested: Results: Date Plugged: Date Repaired: Date Put Back in Service:
Review Completed by: Comments:
TA Approved: Yes Denied Date:

Mail to the Appropriate KCC Conservation Office:

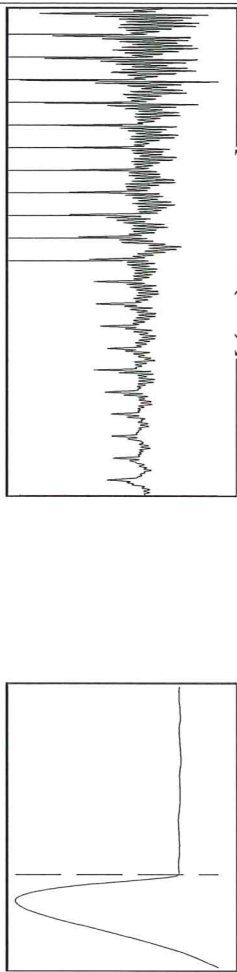
Table with 2 columns: Office Address, Phone. Rows for District Office #1, #2, #3, #4.

Group: Indian Oil Well: Swartz 1 (acquired on: 09/14/21 14:47:38)



Filter Type High Pass Automatic Collar Count Yes
 Manual Acoustic Vel 1366.38 ft/s Manual JTS/sec 21.5517
 Time 2.94 sec
 Joints 64.4157 Jts
 Depth 2041.98 ft

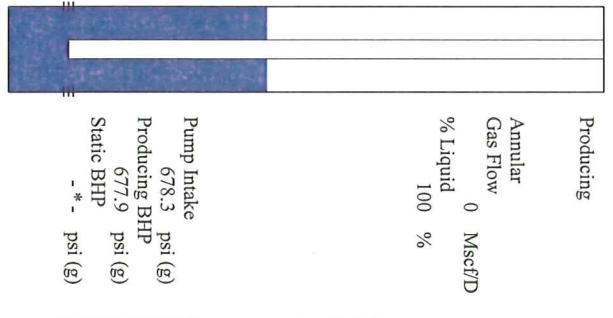
0.5 to 1.5 (Sec) 1



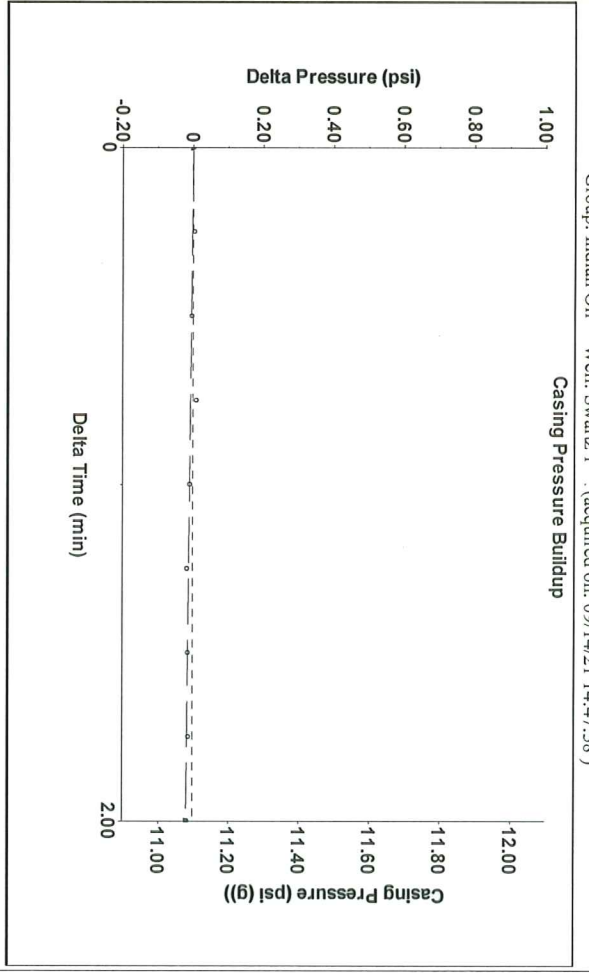
Analysis Method: Automatic

Group: Indian Oil Well: Swartz 1-A (acquired on: 09/14/21 14:47:38)

Production	Potential	Casing Pressure	Producing
Current 0	-* - BBL/D	11.1 psi (g)	Annular Gas Flow 0 Mscf/D
Oil 0	-* - BBL/D	Casing Pressure Buildup -0.0 psi	% Liquid 100 %
Water 30	-* - Mscf/D	2.00 min	
Gas 5.0		Gas/Liquid Interface Pressure 12.2 psi (g)	
IPR Method PBHP/SBHP	Vogel -*	Liquid Level Depth 2041.98 ft	
Production Efficiency 0.0		Pump Intake Depth 3507.00 ft	
Oil 40 deg-API		Formation Depth 3506.00 ft	
Water 1.05 Sp.Gr:H2O			
Gas 0.62 Sp.Gr:AIR			
Acoustic Velocity 1389.1 ft/s			

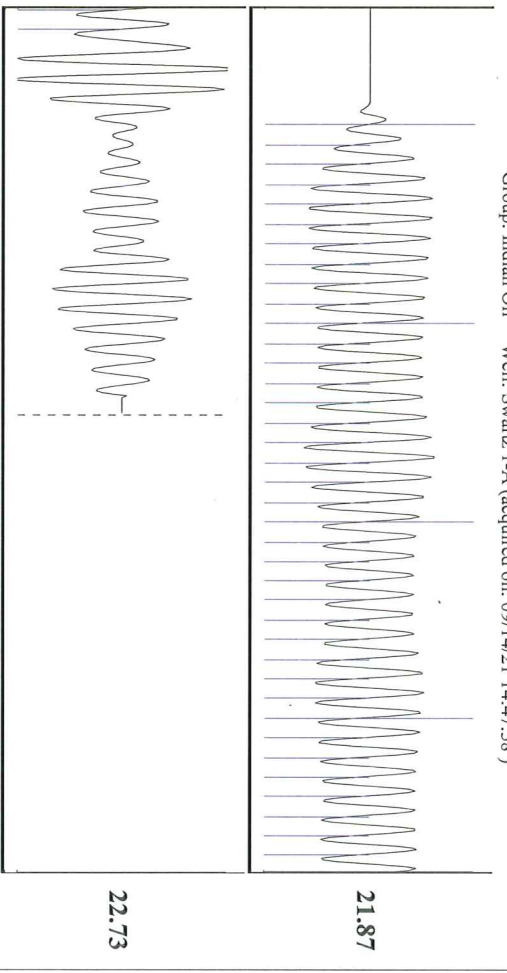


Group: Indian Oil Well: Swartz 1 (acquired on: 09/14/21 14:47:38)



Change in Pressure -0.02 psi PT 15565
 Change in Time 2.00 min Range 0 - ? psi

Group: Indian Oil Well: Swartz 1-A (acquired on: 09/14/21 14:47:38)



Acoustic Velocity 1389.1 ft/s Joints counted 39
 Joints Per Second 21.9101 Jts/sec Joints to liquid level 64.4157
 Depth to liquid level 2041.98 ft Filter Width 19.5517
 Automatic Collar Count Yes Filter to 1st Collar 2.048

Conservation Division
District Office No. 1
210 E. Frontview, Suite A
Dodge City, KS 67801



Phone: 620-682-7933
<http://kcc.ks.gov/>

Andrew J. French, Chairperson
Dwight D. Keen, Commissioner
Susan K. Duffy, Commissioner

Laura Kelly, Governor

September 16, 2021

Anthony Farrar
Indian Oil Co., Inc.
2507 SE US HWY 160
PO BOX 209
MEDICINE LODGE, KS 67104-0209

Re: Temporary Abandonment
API 15-007-21148-00-01
SWARTZ 1
NE/4 Sec.31-31S-11W
Barber County, Kansas

Dear Anthony Farrar:

"Your temporary abandonment (TA) application for the well listed above has been approved. In accordance with K.A.R. 82-3-111 the TA status of this well will expire 09/16/2022.

- * If you return this well to service or plug it, please notify the District Office.
- * If you sell this well you are required to file a Transfer of Operator form, T-1.
- * If the well will remain temporarily abandoned, you must submit a new TA application, CP-111, before 09/16/2022.

You may contact me at the number above if you have questions.

Very truly yours,

Michael Maier"