

KANSAS CORPORATION COMMISSION  
OIL & GAS CONSERVATION DIVISION

TEMPORARY ABANDONMENT WELL APPLICATION

All blanks must be complete

OPERATOR: License# \_\_\_\_\_  
 Name: \_\_\_\_\_  
 Address 1: \_\_\_\_\_  
 Address 2: \_\_\_\_\_  
 City: \_\_\_\_\_ State: \_\_\_\_\_ Zip: \_\_\_\_\_ + \_\_\_\_\_  
 Contact Person: \_\_\_\_\_  
 Phone: ( \_\_\_\_\_ ) \_\_\_\_\_  
 Contact Person Email: \_\_\_\_\_  
 Field Contact Person: \_\_\_\_\_  
 Field Contact Person Phone: ( \_\_\_\_\_ ) \_\_\_\_\_

API No. 15- \_\_\_\_\_  
 Spot Description: \_\_\_\_\_  
 \_\_\_\_\_ - \_\_\_\_\_ - \_\_\_\_\_ - \_\_\_\_\_ Sec. \_\_\_\_\_ Twp. \_\_\_\_\_ S. R. \_\_\_\_\_  E  W  
 \_\_\_\_\_ feet from  N /  S Line of Section  
 \_\_\_\_\_ feet from  E /  W Line of Section  
 GPS Location: Lat: \_\_\_\_\_, Long: \_\_\_\_\_  
(e.g. xx.xxxxx) (e.g. -xxx.xxxxx)  
 Datum:  NAD27  NAD83  WGS84  
 County: \_\_\_\_\_ Elevation: \_\_\_\_\_  GL  KB  
 Lease Name: \_\_\_\_\_ Well #: \_\_\_\_\_  
 Well Type: (check one)  Oil  Gas  OG  WSW  Other: \_\_\_\_\_  
 SWD Permit #: \_\_\_\_\_  ENHR Permit #: \_\_\_\_\_  
 Gas Storage Permit #: \_\_\_\_\_  
 Spud Date: \_\_\_\_\_ Date Shut-In: \_\_\_\_\_

|                  | Conductor | Surface | Production | Intermediate | Liner | Tubing |
|------------------|-----------|---------|------------|--------------|-------|--------|
| Size             |           |         |            |              |       |        |
| Setting Depth    |           |         |            |              |       |        |
| Amount of Cement |           |         |            |              |       |        |
| Top of Cement    |           |         |            |              |       |        |
| Bottom of Cement |           |         |            |              |       |        |

Casing Fluid Level from Surface: \_\_\_\_\_ How Determined? \_\_\_\_\_ Date: \_\_\_\_\_  
 Casing Squeeze(s): \_\_\_\_\_ to \_\_\_\_\_ w / \_\_\_\_\_ sacks of cement, \_\_\_\_\_ to \_\_\_\_\_ w / \_\_\_\_\_ sacks of cement. Date: \_\_\_\_\_  
(top) (bottom) (top) (bottom)  
 Do you have a valid Oil & Gas Lease?  Yes  No  
 Depth and Type:  Junk in Hole at \_\_\_\_\_  Tools in Hole at \_\_\_\_\_ Casing Leaks:  Yes  No Depth of casing leak(s): \_\_\_\_\_  
(depth) (depth)  
 Type Completion:  ALT. I  ALT. II Depth of:  DV Tool: \_\_\_\_\_ w / \_\_\_\_\_ sacks of cement  Port Collar: \_\_\_\_\_ w / \_\_\_\_\_ sack of cement  
(depth) (depth)  
 Packer Type: \_\_\_\_\_ Size: \_\_\_\_\_ Inch Set at: \_\_\_\_\_ Feet  
 Total Depth: \_\_\_\_\_ Plug Back Depth: \_\_\_\_\_ Plug Back Method: \_\_\_\_\_

**Geological Data:**

| Formation Name | Formation Top | Formation Base | Completion Information   |
|----------------|---------------|----------------|--|
| 1. _____       | At: _____     | to _____ Feet  | Perforation Interval _____ to _____ Feet or Open Hole Interval _____ to _____ Feet |
| 2. _____       | At: _____     | to _____ Feet  | Perforation Interval _____ to _____ Feet or Open Hole Interval _____ to _____ Feet |

UNDER PENALTY OF PERJURY I HEREBY ATTEST THAT THE INFORMATION CONTAINED HEREIN IS TRUE AND CORRECT TO THE BEST OF MY KNOWLEDGE

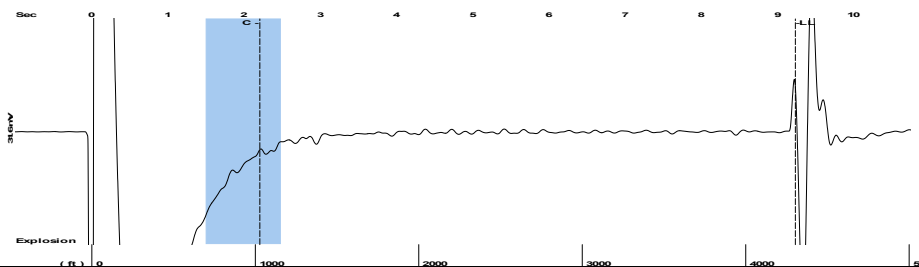
Submitted Electronically

|   |  |                |                     |                      |                                 |
|---|--|----------------|---------------------|----------------------|---------------------------------|
| <b>Do NOT Write in This Space - KCC USE ONLY</b>                                      | Date Tested: _____                         | Results: _____ | Date Plugged: _____ | Date Repaired: _____ | Date Put Back in Service: _____ |
|   | Review Completed by: _____ Comments: _____ |                |                     |                      |                                 |
| TA Approved: <input type="checkbox"/> Yes <input type="checkbox"/> Denied Date: _____ |  |                |                     |                      |                                 |

Mail to the Appropriate KCC Conservation Office:

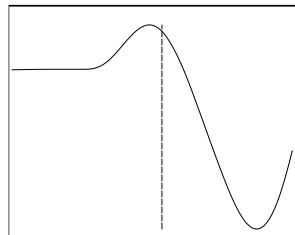
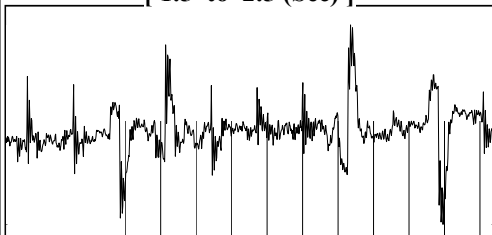
|  |  |                    |
|--|--|--------------------|
|  | KCC District Office #1 - 210 E. Frontview, Suite A, Dodge City, KS 67801               | Phone 620.682.7933 |
|  | KCC District Office #2 - 3450 N. Rock Road, Building 600, Suite 601, Wichita, KS 67226 | Phone 316.337.7400 |
|  | KCC District Office #3 - 137 E. 21st St., Chanute, KS 66720                            | Phone 620.902.6450 |
|  | KCC District Office #4 - 2301 E. 13th Street, Hays, KS 67601-2651                      | Phone 785.261.6250 |

Group: Examples Well: SCHLIFFKE #1-9 (acquired on: 09/13/21 12:48:33 )



Filter Type High Pass Automatic Collar Count Yes Time 9.231 sec  
 Manual Acoustic Veloc 869.684 ft/s Manual JTS/sec 13.7174 Joints 135.75 Jts  
 Depth 4303.27 ft

[ 1.5 to 2.5 (Sec) ]



**Analysis Method: Automatic**

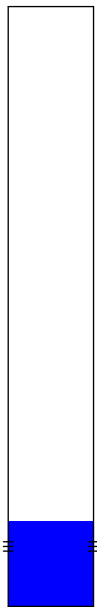
Group: Examples Well: SCHLIFFKE #1-9 (acquired on: 09/13/21 12:48:33 )

NO PRESSURE DATA AVAILABLE

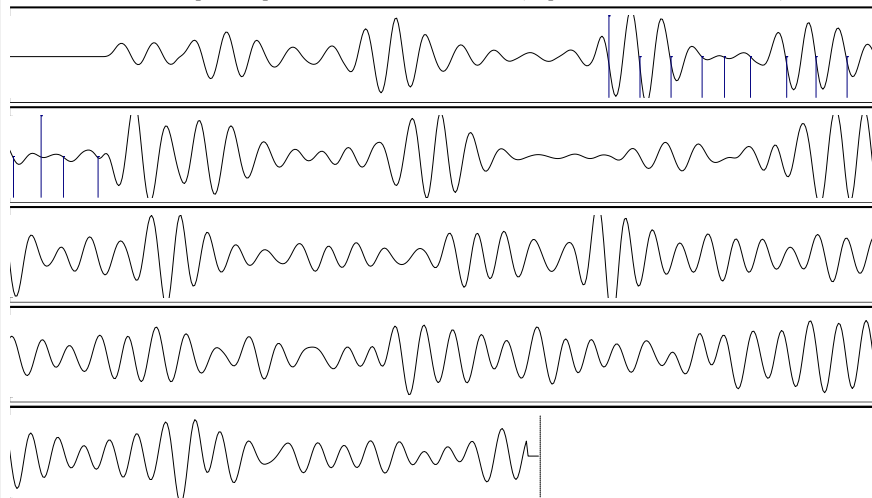
Change in Pressure -0.05 psi PT18514  
 Range 0 - ? psi  
 Change in Time 0.50 min

Group: Examples Well: SCHLIFFKE #1-9 (acquired on: 09/13/21 12:48:33 )

|   |                  |                               |                               |
|---|------------------|-------------------------------|-------------------------------|
| <b>Production</b>                             | <b>Potential</b> | <b>Casing Pressure</b>        | <b>Producing</b>              |
| Current                                       |                  | 23.7 psi (g)                  |                               |
| Oil - * -                                     | - * - BBL/D      | Casing Pressure Buildup       | Annular Gas Flow - * - Mscf/D |
| Water - * -                                   | - * - BBL/D      | 0.50 min                      | % Liquid 100 %                |
| Gas - * -                                     | - * - Mscf/D     | Gas/Liquid Interface Pressure |                               |
|   |                  | - * - psi (g)                 |                               |
| IPR Method Vogel                              |                  | Liquid Level Depth            |                               |
| PBHP/SBHP - * -                               |                  | 4303.27 ft                    |                               |
| Production Efficiency 0.0                     |                  | Pump Intake Depth             |                               |
|   |                  | - * - ft                      |                               |
| Oil 40 deg.API                                |                  | Formation Depth               |                               |
| Water 1.05 Sp.Gr.H2O                          |                  | 4544.00 ft                    |                               |
| Gas 1.04 Sp.Gr.AIR                            |                  |                               |                               |
| Acoustic Velocity 932.353 ft/s                |                  |                               |                               |
|   |                  |                               |                               |
| Formation Submergence                         |                  |                               |                               |
| Total Gaseous Liquid Column HT (TVD) - * - ft |                  |                               |                               |
| Equivalent Gas Free Liquid HT (TVD) - * - ft  |                  |                               |                               |
| Acoustic Test                                 |                  |                               |                               |



Group: Examples Well: SCHLIFFKE #1-9 (acquired on: 09/13/21 12:48:33 )



|                        |                 |                        |                 |
|------------------------|-----------------|------------------------|-----------------|
| Acoustic Velocity      | 932.353 ft/s    | Joints counted         | 12              |
| Joints Per Second      | 14.7059 jts/sec | Joints to liquid level | 135.75          |
| Depth to liquid level  | 4303.27 ft      | Filter Width           | 11.7174 15.7174 |
| Automatic Collar Count | Yes             | Time to 1st Collar     | 1.388 2.204     |

September 16, 2021

Jose Reyes  
American Warrior, Inc.  
PO BOX 399  
GARDEN CITY, KS 67846-0399

Re: Temporary Abandonment  
API 15-083-21782-00-00  
SCHLIFFKE 1-9 TWIN  
NW/4 Sec.09-23S-22W  
Hodgeman County, Kansas

Dear Jose Reyes:

"Your temporary abandonment (TA) application for the well listed above has been approved. In accordance with K.A.R. 82-3-111 the TA status of this well will expire 09/16/2022.

- \* If you return this well to service or plug it, please notify the District Office.
- \* If you sell this well you are required to file a Transfer of Operator form, T-1.
- \* If the well will remain temporarily abandoned, you must submit a new TA application, CP-111, before 09/16/2022.

You may contact me at the number above if you have questions.

Very truly yours,

Michael Maier"