

KANSAS CORPORATION COMMISSION
OIL & GAS CONSERVATION DIVISION

TEMPORARY ABANDONMENT WELL APPLICATION

OPERATOR: License#
Name:
Address 1:
Address 2:
City: State: Zip:
Contact Person:
Phone:
Contact Person Email:
Field Contact Person:
Field Contact Person Phone:

API No. 15-
Spot Description:
Sec. Twp. S. R.
GPS Location: Lat: Long:
Datum: NAD27 NAD83 WGS84
County: Elevation:
Lease Name: Well #:
Well Type: Oil Gas OG WSW Other:
SWD Permit #: ENHR Permit #:
Gas Storage Permit #:
Spud Date: Date Shut-In:

Table with 7 columns: Conductor, Surface, Production, Intermediate, Liner, Tubing. Rows include Size, Setting Depth, Amount of Cement, Top of Cement, Bottom of Cement.

Casing Fluid Level from Surface: How Determined? Date:
Casing Squeeze(s): to w / sacks of cement, to w / sacks of cement. Date:
Do you have a valid Oil & Gas Lease? Yes No
Depth and Type: Junk in Hole at Tools in Hole at Casing Leaks: Yes No Depth of casing leak(s):
Type Completion: ALT. I ALT. II Depth of: DV Tool: w / sacks of cement Port Collar: w / sack of cement
Packer Type: Size: Inch Set at: Feet
Total Depth: Plug Back Depth: Plug Back Method:

Geological Data:

Table with 4 columns: Formation Name, Formation Top, Formation Base, Completion Information. Rows 1 and 2.

UNDER PENALTY OF PERJURY I HEREBY ATTEST THAT THE INFORMATION CONTAINED HEREIN IS TRUE AND CORRECT TO THE BEST OF MY KNOWLEDGE

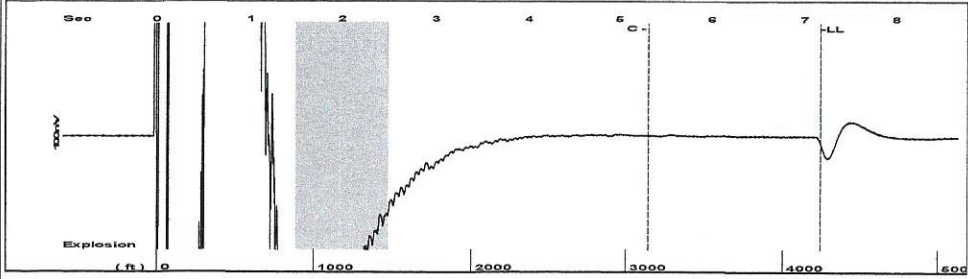
Submitted Electronically

Do NOT Write in This Space - KCC USE ONLY
Date Tested: Results: Date Plugged: Date Repaired: Date Put Back in Service:
Review Completed by: Comments:
TA Approved: Yes Denied Date:

Mail to the Appropriate KCC Conservation Office:

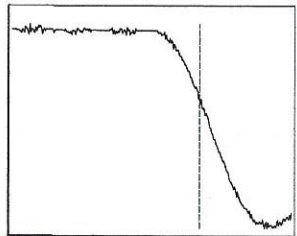
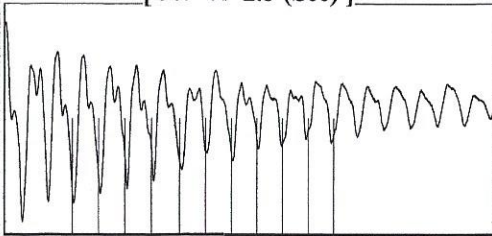
Table with 3 columns: District Office, Address, Phone. Rows for District Office #1, #2, #3, #4.

Group: Belpre Well: Chalk 3-14 (acquired on: 09/14/21 08:32:50)



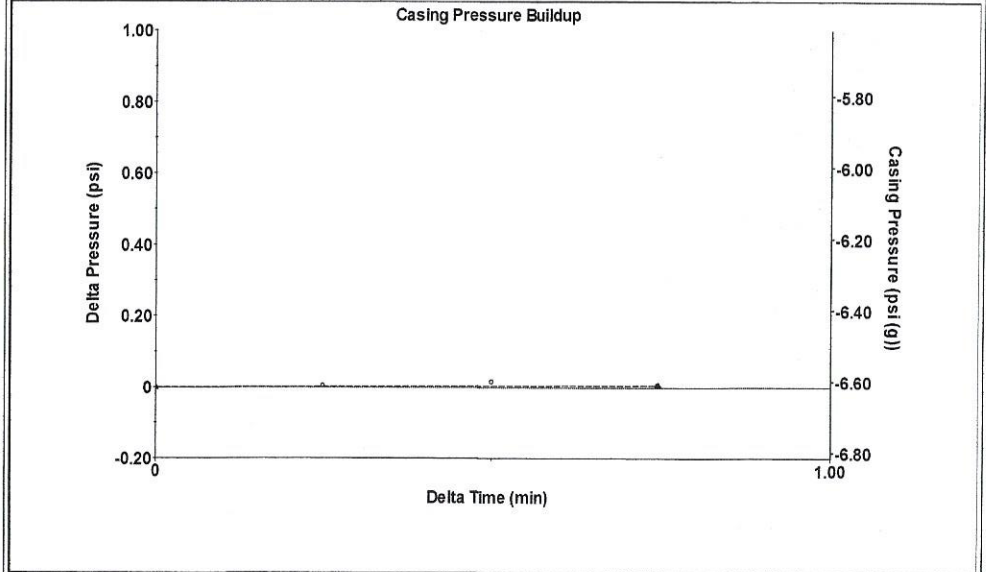
Filter Type High Pass Automatic Collar Count Yes Time 7.169 sec
 Manual Acoustic Velo 1178.69 ft/s Manual JTS/sec 18.6916 Joints 134.49
 Depth 4240.46 ft

[1.5 to 2.5 (Sec)]



Analysis Method: Automatic

Group: Belpre Well: Chalk 3-14 (acquired on: 09/14/21 08:32:50)

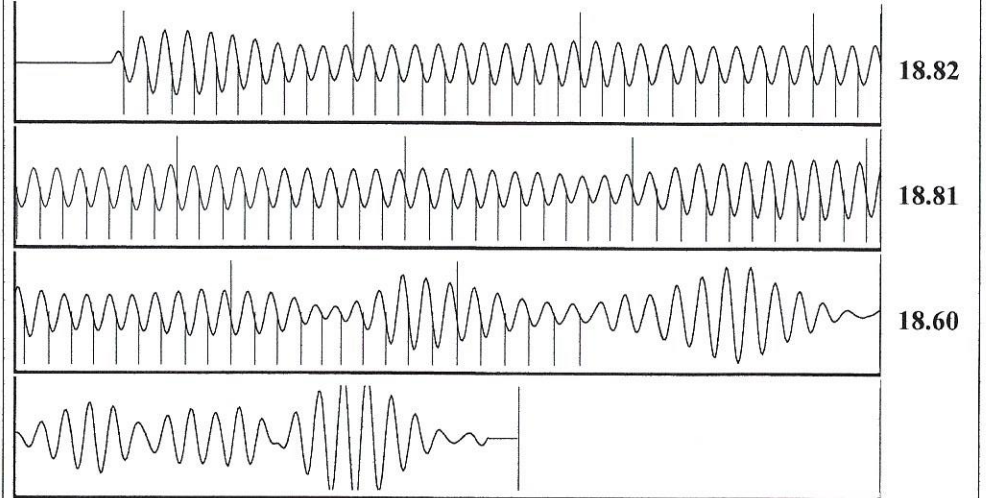


Change in Pressure 0.01 psi PT13440
 Range 0 - ? psi
 Change in Time 0.75 min

Group: Belpre Well: Chalk 3-14 (acquired on: 09/14/21 08:32:50)

Production	Potential	Casing Pressure		Producing
Oil - * -	- * - BBL/D	-6.6 psi (g)		Annular Gas Flow
Water - * -	- * - BBL/D	Casing Pressure Buildup		0 Mscf/D
Gas - * -	- * - Mscf/D	0.006 psi		% Liquid
IPR Method	Vogel	0.75 min		100 %
PBHP/SBHP	- * -	Gas/Liquid Interface Pressure		
Production Efficiency	0.0	-5.6 psi (g)		
Oil 40 deg.API		Liquid Level Depth		
Water 1.05 Sp.Gr.H2O		4240.46 ft		
Gas 0.82 Sp.Gr.AIR		Pump Intake Depth		
Acoustic Velocity	1183 ft/s	4320.00 ft		
		Formation Depth		
		4304.00 ft		
Formation Submergence			Pump Intake	
Total Gaseous Liquid Column HT (TVD)	80 ft		21.5 psi (g)	
Equivalent Gas Free Liquid HT (TVD)	80 ft		Producing BHP	
Acoustic Test			16.0 psi (g)	
			Static BHP	
			- * - psi (g)	

Group: Belpre Well: Chalk 3-14 (acquired on: 09/14/21 08:32:50)



Acoustic Velocity 1183 ft/s Joints counted 95
 Joints Per Second 18.7599 jts/sec Joints to liquid level 134.49
 Depth to liquid level 4240.46 ft Filter Width 16.6916 20.6916
 Automatic Collar Count Yes Time to 1st Collar 0.248 5.312

September 23, 2021

Loveness Mpanje
F. G. Holl Company L.L.C.
9431 E CENTRAL STE 100
WICHITA, KS 67206-2563

Re: Temporary Abandonment
API 15-047-21170-00-01
CHALK 3-14
SW/4 Sec.14-24S-17W
Edwards County, Kansas

Dear Loveness Mpanje:

"Your temporary abandonment (TA) application for the well listed above has been approved. In accordance with K.A.R. 82-3-111 the TA status of this well will expire 04/30/2022.

- * If you return this well to service or plug it, please notify the District Office.
- * If you sell this well you are required to file a Transfer of Operator form, T-1.
- * If the well will remain temporarily abandoned, you must submit a new TA application, CP-111, before 04/30/2022.

You may contact me at the number above if you have questions.

Very truly yours,

Michael Maier"