

KANSAS CORPORATION COMMISSION
OIL & GAS CONSERVATION DIVISION

TEMPORARY ABANDONMENT WELL APPLICATION

OPERATOR: License#
Name:
Address 1:
Address 2:
City: State: Zip:
Contact Person:
Phone:
Contact Person Email:
Field Contact Person:
Field Contact Person Phone:

API No. 15-
Spot Description:
Sec. Twp. S. R.
GPS Location: Lat: Long:
Datum: NAD27 NAD83 WGS84
County: Elevation:
Lease Name: Well #:
Well Type: Oil Gas OG WSW Other:
SWD Permit #: ENHR Permit #:
Gas Storage Permit #:
Spud Date: Date Shut-In:

Table with 7 columns: Conductor, Surface, Production, Intermediate, Liner, Tubing. Rows include Size, Setting Depth, Amount of Cement, Top of Cement, Bottom of Cement.

Casing Fluid Level from Surface: How Determined? Date:
Casing Squeeze(s): to w / sacks of cement, to w / sacks of cement. Date:
Do you have a valid Oil & Gas Lease? Yes No
Depth and Type: Junk in Hole at Tools in Hole at Casing Leaks: Yes No Depth of casing leak(s):
Type Completion: ALT. I ALT. II Depth of: DV Tool: w / sacks of cement Port Collar: w / sack of cement
Packer Type: Size: Inch Set at: Feet
Total Depth: Plug Back Depth: Plug Back Method:

Geological Date:

Table with 4 columns: Formation Name, Formation Top, Formation Base, Completion Information. Rows 1 and 2.

UNDER PENALTY OF PERJURY I HEREBY ATTEST THAT THE INFORMATION CONTAINED HEREIN IS TRUE AND CORRECT TO THE BEST OF MY KNOWLEDGE

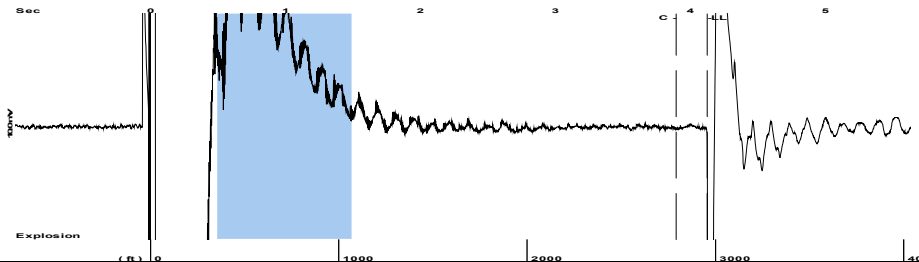
Submitted Electronically

Do NOT Write in This Space - KCC USE ONLY
Date Tested: Results: Date Plugged: Date Repaired: Date Put Back in Service:
Review Completed by: Comments:
TA Approved: Yes Denied Date:

Mail to the Appropriate KCC Conservation Office:

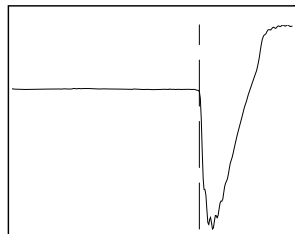
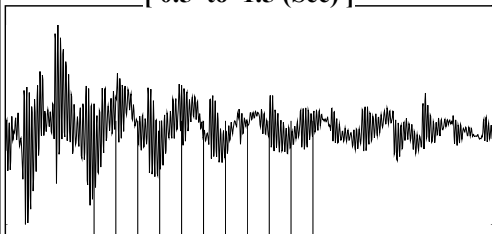
Table with 2 columns: Office Address, Phone. Rows for District Office #1, #2, #3, #4.

Group: E Miller A Well: E Miller A3 (acquired on: 09/26/21 16:05:09)



Filter Type High Pass Automatic Collar Count Yes Time 4.126 sec
 Manual Acoustic Vel: 1408.89 ft/s Manual JTS/sec 22.2222 Joints 93.2558 Jts
 Depth 2956.21 ft

[0.5 to 1.5 (Sec)]



Analysis Method: Automatic

Group: E Miller A Well: E Miller A3 (acquired on: 09/26/21 16:05:09)

NO PRESSURE DATA AVAILABLE

Change in Pressure 0.00 psi PT6067
 Range 0 - ? psi
 Change in Time 0.00 min

Group: E Miller A Well: E Miller A3 (acquired on: 09/26/21 16:05:09)

Production
 Current Potential
 Oil - * - 0.0 BBL/D
 Water - * - 0.0 BBL/D
 Gas - * - 0.0 Mscf/D

IPR Method Vogel
 PBHP/SBHP 0.19
 Production Efficiency 93.5

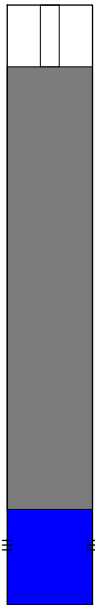
Oil 36 deg.API
 Water 1.08 Sp.Gr.H2O
 Gas 0.58 Sp.Gr.AIR

Acoustic Velocity 1432.97 ft/s

Formation Submergence
 Total Gaseous Liquid Column HT (TVD) - * - ft
 Equivalent Gas Free Liquid HT (TVD) - * - ft

Acoustic Test

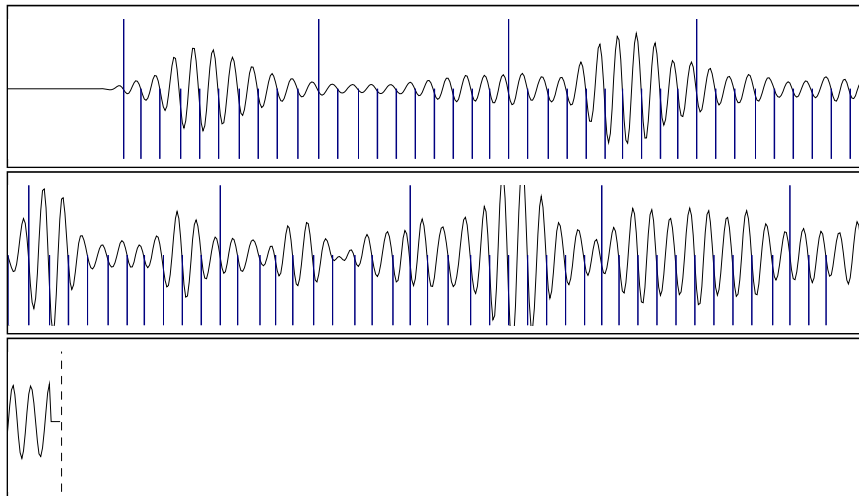
Casing Pressure 26.9 psi (g)
 Casing Pressure Buildup - * - psi
 - * - min
 Gas/Liquid Interface Pressure 29.4 psi (g)
 Liquid Level Depth 2956.21 ft
 Pump Intake Depth 14.00 ft
 Formation Depth 3193.00 ft



Producing
 Annular Gas Flow 0 Mscf/D
 % Liquid 100 %

Pump Intake 26.9 psi (g)
 Producing BHP 140.2 psi (g)
 Static BHP 815.5 psi (g)

Group: E Miller A Well: E Miller A3 (acquired on: 09/26/21 16:05:09)



Acoustic Velocity 1432.97 ft/s Joints counted 82
 Joints Per Second 22.602 jts/sec Joints to liquid level 93.2558
 Depth to liquid level 2956.21 ft Filter Width 20.2222 24.2222
 Automatic Collar Count Yes Time to 1st Collar 0.268 3.896

Conservation Division
District Office No. 4
2301 E. 13th Street
Hays, KS 67601-2651



Phone: 785-261-6250
Fax: 785-625-0564
<http://kcc.ks.gov/>

Andrew J. French, Chairperson
Dwight D. Keen, Commissioner
Susan K. Duffy, Commissioner

Laura Kelly, Governor

September 28, 2021

Gavin Ramsay
Fossil Creek Energy, LLC
PO BOX 915
RUSSELL, KS 67665

Re: Temporary Abandonment
API 15-167-06735-00-00
E MILLER A 3
SE/4 Sec.30-14S-13W
Russell County, Kansas

Dear Gavin Ramsay:

"Your temporary abandonment (TA) application for the well listed above has been approved. In accordance with K.A.R. 82-3-111 the TA status of this well will expire 09/28/2022.

- * If you return this well to service or plug it, please notify the District Office.
- * If you sell this well you are required to file a Transfer of Operator form, T-1.
- * If the well will remain temporarily abandoned, you must submit a new TA application, CP-111, before 09/28/2022.

You may contact me at the number above if you have questions.

Very truly yours,

RICHARD WILLIAMS"