

KANSAS CORPORATION COMMISSION
OIL & GAS CONSERVATION DIVISION

TEMPORARY ABANDONMENT WELL APPLICATION

OPERATOR: License#
Name:
Address 1:
Address 2:
City: State: Zip:
Contact Person:
Phone:
Contact Person Email:
Field Contact Person:
Field Contact Person Phone:

API No. 15-
Spot Description:
Sec. Twp. S. R.
GPS Location: Lat: Long:
Datum: NAD27 NAD83 WGS84
County: Elevation:
Lease Name: Well #:
Well Type: Oil Gas OG WSW Other:
SWD Permit #: ENHR Permit #:
Gas Storage Permit #:
Spud Date: Date Shut-In:

Table with 7 columns: Conductor, Surface, Production, Intermediate, Liner, Tubing. Rows include Size, Setting Depth, Amount of Cement, Top of Cement, Bottom of Cement.

Casing Fluid Level from Surface: How Determined? Date:
Casing Squeeze(s): to w / sacks of cement, to w / sacks of cement. Date:
Do you have a valid Oil & Gas Lease? Yes No
Depth and Type: Junk in Hole at Tools in Hole at Casing Leaks: Yes No Depth of casing leak(s):
Type Completion: ALT. I ALT. II Depth of: DV Tool: w / sacks of cement Port Collar: w / sack of cement
Packer Type: Size: Inch Set at: Feet
Total Depth: Plug Back Depth: Plug Back Method:

Geological Data:

Table with 4 columns: Formation Name, Formation Top, Formation Base, Completion Information. Rows 1 and 2.

UNDER PENALTY OF PERJURY I HEREBY ATTEST THAT THE INFORMATION CONTAINED HEREIN IS TRUE AND CORRECT TO THE BEST OF MY KNOWLEDGE

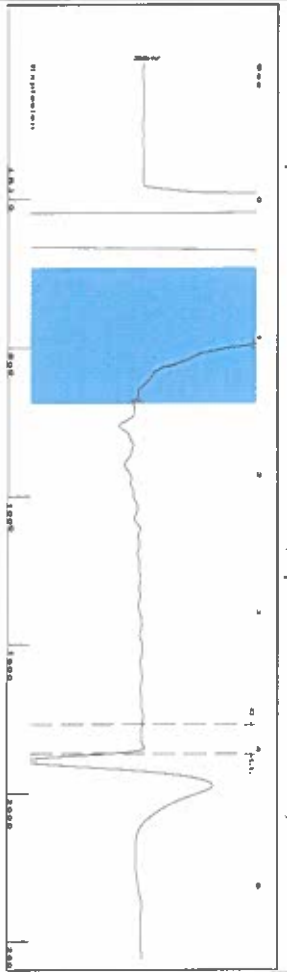
Submitted Electronically

Do NOT Write in This Space - KCC USE ONLY
Date Tested: Results: Date Plugged: Date Repaired: Date Put Back in Service:
Review Completed by: Comments:
TA Approved: Yes Denied Date:

Mail to the Appropriate KCC Conservation Office:

Table with 2 columns: Office Address, Phone. Rows for District Office #1, #2, #3, #4.

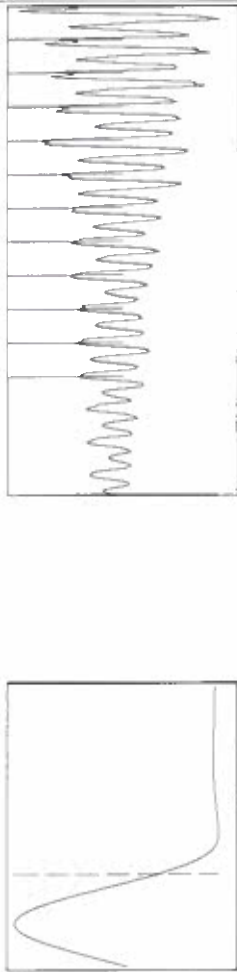
Group: SUBLETTE Well: SIMPSON TRUST 5J (acquired on: 09/26/21 09:42:10)



Filter Type High Pass Automatic Collar Count Yes
 Manual Acoustic Velo 918.841 N/s Manual JTS/sec 14.4928

[0.5 to 1.5 (Sec)]

Time 4.043 sec
 Joints 58,9888 Jis
 Depth 1869.94 ft

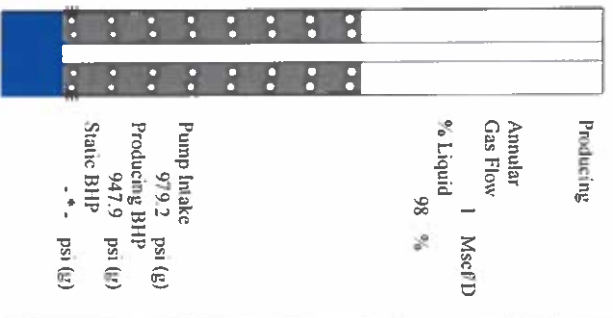


Analysis Method: Automatic

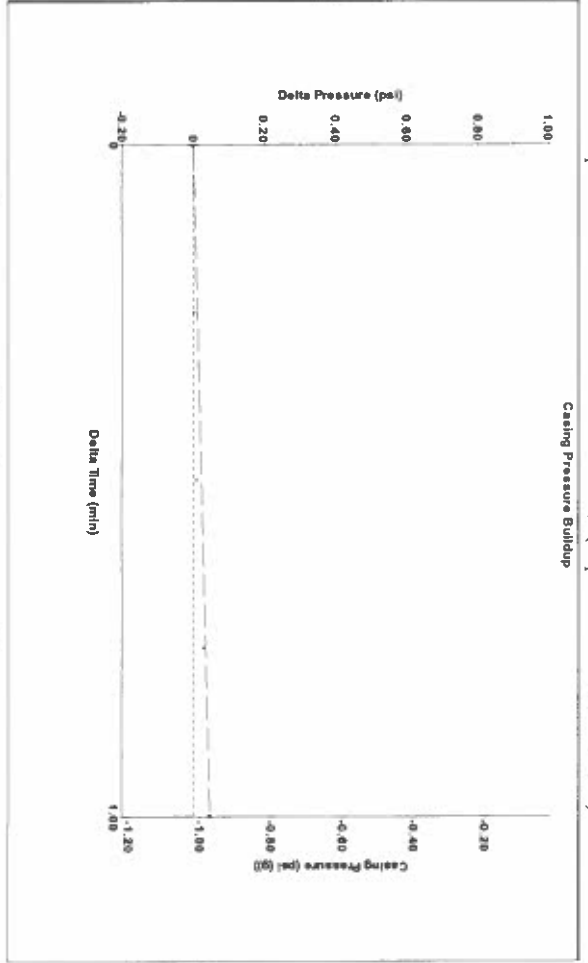
Group: SUBLETTE Well: SIMPSON TRUST 5J (acquired on: 09/26/21 09:42:10)

Production Current	Potential	Casing Pressure	Producing
Oil *	BBL/D	-1.0 psi (g)	Annular Gas Flow
Water *	BBL/D	0.0 psi	% Liquid
Gas *	MscFD	1.00 min	1 MscFD
IPR Method	Vogel	Gas/Liquid Interface Pressure	
PRHP/SBHP	0.0	-0.1 psi (g)	
Production Efficiency		Liquid Level Depth	
		1869.94 ft	
Oil 40 deg API		Pump Intake Depth	
Water 1.05 Sp.Gr.1120		4937.00 ft	
Gas 1.04 Sp.Gr.AIR		Formation Depth	
Acoustic Velocity	925.028 N/s	4834.00 ft	

Formation Submergence
 Total Gaseous Liquid Column HT (TVD) 3067 ft
 Equivalent Gas Free Liquid HT (TVD) 2996 ft
 9/26/21

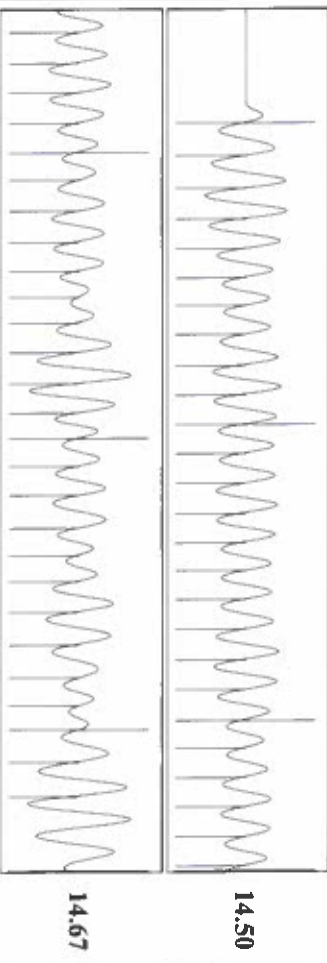


Group: SUBLETTE Well: SIMPSON TRUST 5J (acquired on: 09/26/21 09:42:10)



Change in Pressure 0.05 psi
 Change in Time 1.00 min
 PT14679 Range 0.2 psi

Group: SUBLETTE Well: SIMPSON TRUST 5J (acquired on: 09/26/21 09:42:10)



Acoustic Velocity 925.028 N/s
 Joints Per Second 14.5903 Jis/Sec
 Depth to liquid level 1869.94 ft
 Automatic Collar Count Yes
 Joints counted 52
 Joints to liquid level 58,9888
 Filter Width 12.4928
 Time to 1st Collar 0.264
 16.4928
 3.828

September 30, 2021

Katherine McClurkan
Merit Energy Company, LLC
13727 Noel Road, Suite 1200
Dallas, TX 75240

Re: Temporary Abandonment
API 15-175-22109-00-00
Simpson Trust 5-J4-31-33
SE/4 Sec.04-31S-33W
Seward County, Kansas

Dear Katherine McClurkan:

"Your temporary abandonment (TA) application for the well listed above has been approved. In accordance with K.A.R. 82-3-111 the TA status of this well will expire 09/30/2022.

- * If you return this well to service or plug it, please notify the District Office.
- * If you sell this well you are required to file a Transfer of Operator form, T-1.
- * If the well will remain temporarily abandoned, you must submit a new TA application, CP-111, before 09/30/2022.

You may contact me at the number above if you have questions.

Very truly yours,

Michael Maier"