

KANSAS CORPORATION COMMISSION
OIL & GAS CONSERVATION DIVISION

TEMPORARY ABANDONMENT WELL APPLICATION

OPERATOR: License#
Name:
Address 1:
Address 2:
City: State: Zip:
Contact Person:
Phone:
Contact Person Email:
Field Contact Person:
Field Contact Person Phone:

API No. 15-
Spot Description:
Sec. Twp. S. R.
feet from N / S Line of Section
feet from E / W Line of Section
GPS Location: Lat: , Long:
Datum: NAD27 NAD83 WGS84
County: Elevation: GL KB
Lease Name: Well #:
Well Type: Oil Gas OG WSW Other:
SWD Permit #: ENHR Permit #:
Gas Storage Permit #:
Spud Date: Date Shut-In:

Table with 7 columns: Conductor, Surface, Production, Intermediate, Liner, Tubing. Rows include Size, Setting Depth, Amount of Cement, Top of Cement, Bottom of Cement.

Casing Fluid Level from Surface: How Determined? Date:
Casing Squeeze(s): to w / sacks of cement, to w / sacks of cement. Date:
Do you have a valid Oil & Gas Lease? Yes No
Depth and Type: Junk in Hole at Tools in Hole at Casing Leaks: Yes No Depth of casing leak(s):
Type Completion: ALT. I ALT. II Depth of: DV Tool: w / sacks of cement Port Collar: w / sack of cement
Packer Type: Size: Inch Set at: Feet
Total Depth: Plug Back Depth: Plug Back Method:

Geological Data:

Table with 4 columns: Formation Name, Formation Top, Formation Base, Completion Information. Rows 1 and 2.

UNDER PENALTY OF PERJURY I HEREBY ATTEST THAT THE INFORMATION CONTAINED HEREIN IS TRUE AND CORRECT TO THE BEST OF MY KNOWLEDGE

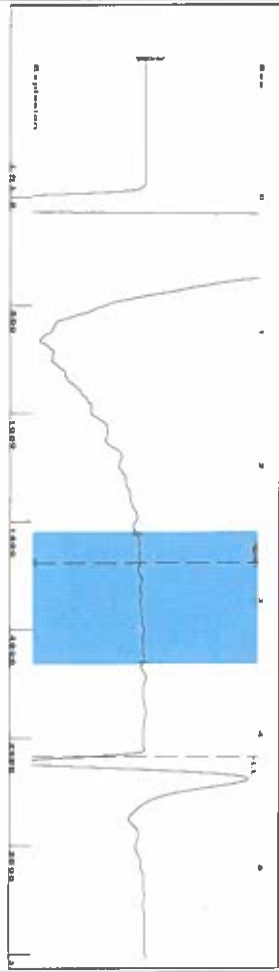
Submitted Electronically

Do NOT Write in This Space - KCC USE ONLY
Date Tested: Results: Date Plugged: Date Repaired: Date Put Back in Service:
Review Completed by: Comments:
TA Approved: Yes Denied Date:

Mail to the Appropriate KCC Conservation Office:

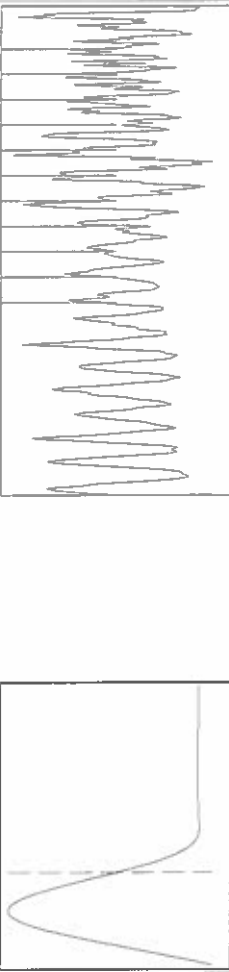
Table with 2 columns: Office Address, Phone. Rows for District Office #1, #2, #3, #4.

Group: SUBLETTE Well: GARRISON A-4 (acquired on: 09/26/21 08:41:26)



Filter Type High Pass Automatic Collar Count Yes
 Manual Acoustic Velo 1190.71 N/s Manual JTS/sec 19.2308
 Time 4.178 sec
 Joints 83.6283 Jts
 Depth 2588.99 ft

1.25 to 3.5 (Sec) |

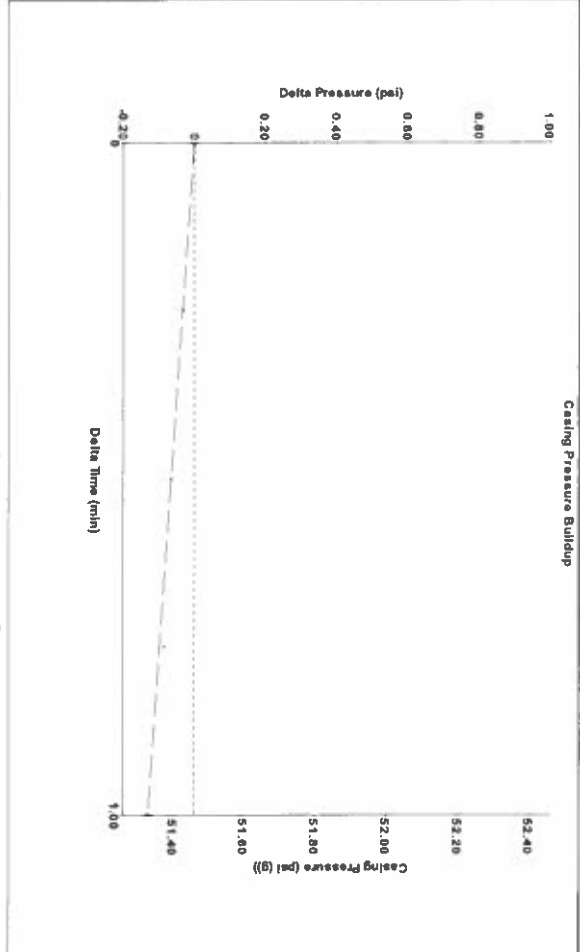


Analysis Method: Automatic

Group: SUBLETTE Well: GARRISON A-4 (acquired on: 09/26/21 08:41:26)

Production	Potential	Casing Pressure	Producing
Oil - *	- * - BBUD	51.5 psi (g)	Annular
Water - *	- * - BBUD	Casing Pressure Buildup	Gas Flow
Gas - *	- * - Mscf/D	-0.129 psi	% Liquid
IPR Method	Vogel	1.00 min	0 Mscf/D
PBHIP/SBHIP	- * -	Gas/Liquid Interface Pressure	100 %
Production Efficiency	0.0	56.0 psi (g)	
Oil 40 deg API		Liquid Level Depth	Pump Intake
Water 1.05 Sp Gr H2O		2588.99 ft	187.9 psi (g)
Gas 0.76 Sp Gr AIR		Pump Intake Depth	Producing BHHP
Acoustic Velocity		2980.00 ft	172.5 psi (g)
		Formation Depth	Static BHHP
		2934.00 ft	- * - psi (g)
Formation Submergence			
Total Gaseous Liquid Column HT (TVD)			
Equivalent Gas Free Liquid HT (TVD)			
9/26/21			

Group: SUBLETTE Well: GARRISON A-4 (acquired on: 09/26/21 08:41:26)



Change in Pressure -0.13 psi PT14679
 Change in Time 1.00 min Range 0 - ? psi

Group: SUBLETTE Well: GARRISON A-4 (acquired on: 09/26/21 08:41:26)

Production	Potential	Casing Pressure	Producing
Oil - *	- * - BBUD	51.5 psi (g)	Annular
Water - *	- * - BBUD	Casing Pressure Buildup	Gas Flow
Gas - *	- * - Mscf/D	-0.129 psi	% Liquid
IPR Method	Vogel	1.00 min	0 Mscf/D
PBHIP/SBHIP	- * -	Gas/Liquid Interface Pressure	100 %
Production Efficiency	0.0	56.0 psi (g)	
Oil 40 deg API		Liquid Level Depth	Pump Intake
Water 1.05 Sp Gr H2O		2588.99 ft	187.9 psi (g)
Gas 0.76 Sp Gr AIR		Pump Intake Depth	Producing BHHP
Acoustic Velocity		2980.00 ft	172.5 psi (g)
		Formation Depth	Static BHHP
		2934.00 ft	- * - psi (g)
Formation Submergence			
Total Gaseous Liquid Column HT (TVD)			
Equivalent Gas Free Liquid HT (TVD)			
9/26/21			

September 30, 2021

Katherine McClurkan
Merit Energy Company, LLC
13727 Noel Road, Suite 1200
Dallas, TX 75240

Re: Temporary Abandonment
API 15-081-21453-00-01
Garrison A 4
NW/4 Sec.21-27S-34W
Haskell County, Kansas

Dear Katherine McClurkan:

"Your temporary abandonment (TA) application for the well listed above has been approved. In accordance with K.A.R. 82-3-111 the TA status of this well will expire 09/30/2022.

- * If you return this well to service or plug it, please notify the District Office.
- * If you sell this well you are required to file a Transfer of Operator form, T-1.
- * If the well will remain temporarily abandoned, you must submit a new TA application, CP-111, before 09/30/2022.

You may contact me at the number above if you have questions.

Very truly yours,

Michael Maier"