

OPERATOR

Company: Charles N. Griffin
 Address: PO Box 347
 Pratt, KS 67124

Contact Geologist:
 Contact Phone Nbr:

Well Name: #6 Addie
 Location: Section 28-29S-15W
 API: 15-151-22494
 Pool:
 State: Kansas

Field: Croft
 Country: USA

Scale 1:240 Imperial

Well Name: #6 Addie
 Surface Location: Section 28-29S-15W
 Bottom Location:
 API: 15-151-22494
 License Number:
 Spud Date: 6/22/2019 Time: 3:00 PM
 Region: Pratt County
 Drilling Completed: 6/27/2019 Time: 9:00 AM
 Surface Coordinates: 720' FSL & 2185' FWL
 Bottom Hole Coordinates:
 Ground Elevation: 1976.00ft
 K.B. Elevation: 1987.00ft
 Logged Interval: 3800.00ft To: 4840.00ft
 Total Depth: 4840.00ft
 Formation:
 Drilling Fluid Type: Chemical (MudCo)

SURFACE CO-ORDINATES

Well Type: Vertical
 Longitude:
 Latitude:
 N/S Co-ord: 720' FSL
 E/W Co-ord: 2185' FWL

LOGGED BY

TERRATECH
 ENERGY SERVICE, LLC

Company: TerraTech Energy Service LLC.
 Address: 1632 S. West St. Suite 12
 Wichita, KS 67208

Phone Nbr: 316-617-3959
 Logged By: Geologist

Name: Bruce Reed

CONTRACTOR

Contractor: WW Drilling
 Rig #: 14
 Rig Type: mud rotary
 Spud Date: 6/22/2019
 TD Date: 6/27/2019
 Rig Release: 6/28/2019

Time: 3:00 PM
 Time: 9:00 AM
 Time: 10:15 AM

ELEVATIONS

K.B. Elevation: 1987.00ft
 K.B. to Ground: 11.00ft

Ground Elevation: 1976.00ft

NOTES

Surface Casing: 8-5/8" at 267'
 Production Casing: 4-1/2" at 4842'

Daily Penetration: 06/22/19 Spud @ 3:00 PM
 06/23/19 445'
 06/24/19 2630'
 06/25/19 3773'
 06/26/19 4595'
 06/27/19 4770' RTD @ 9:00 AM
 06/28/19 4840' Rig released @ 10:15 AM

DRILL STEM TEST

DST 1 4660' - 4690' Viola. Weak surface blow that died on the initial flow period. No blow during the second flow period. Recovered: 10' drilling mud (no shows).
 IFP: 30"/ 18-21psi, ISIP: 45"/ 68 psi, FFP: 60"/ 21-22 psi, FSIP: 60"/ 39 psi

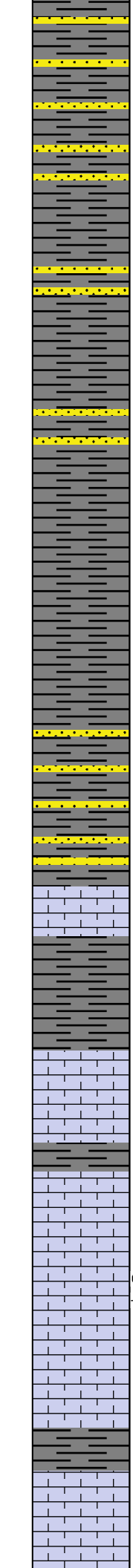
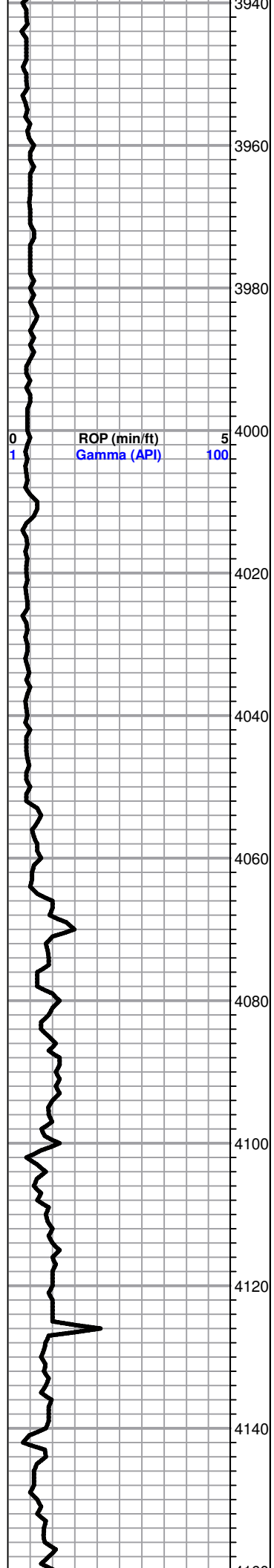
FORMATION TOPS

Formation	Sample Top	Datum	Log Top	Datum	Comparison*
Heebner	3896'	-1909	3900'	-1913	+1
Brown Lime	4064'	-2077	4066'	-2079	+1
Lansing	4087'	-2100	4088'	-2101	-6
Stark	4342'	-2355	4345'	-2358	-2
Base KC	4472'	-2482	4473'	-2486	+1
Pawnee	4533'	-2546	4537'	-2550	-2
Cherokee	4568'	-2581	4572'	-2585	flat
Viola	4606'	-2619	4610'	-2623	-1
Simpson	4754'	-2767	4757'	-2770	+10

*Charles N. Griffin, #5 Addie, 330' FSL & 1370' FWL, Section 28-29S-15W, Pratt County, Kansas

ROCK TYPES

△ △ △ △ Cht Lmst fw7> Carbon Sh



Shale: light medium gray, clay to sandy

3940

3960 Shale: gray-brown, some sandstone clusters, fine grained, no shows

3980 Shale and sandstone as above

4000 Shales: gray-brown, few light gray clusters

4020 Shales: as above

4040 Shale and sandstone

4060 Shales: gray-light gray with fine grained sandstone

Brown Lime 4064' (-2077)

4080 Shale: vari-colored, some tan-brown, fine crystalline limestone

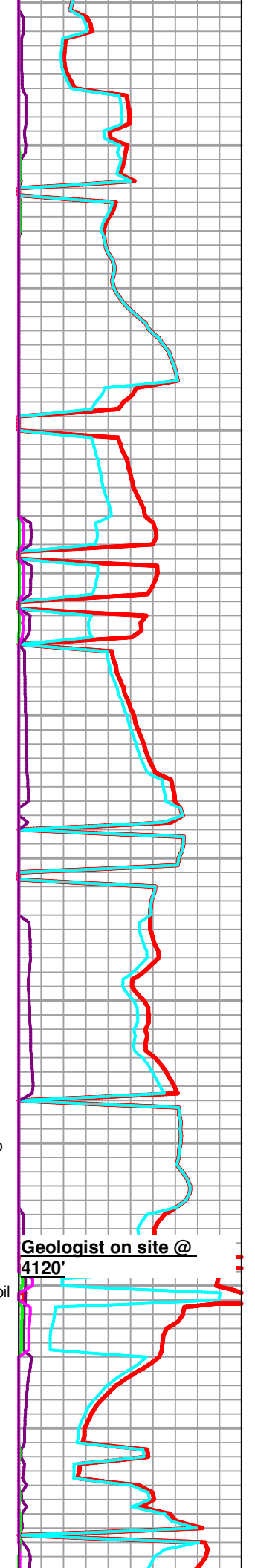
Lansing 4087' (-2100)

4100 Limestone: cream-gray, mostly fossiliferous, some visible porosity, sub shaley, no shows

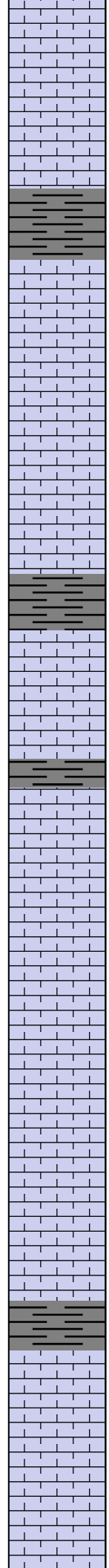
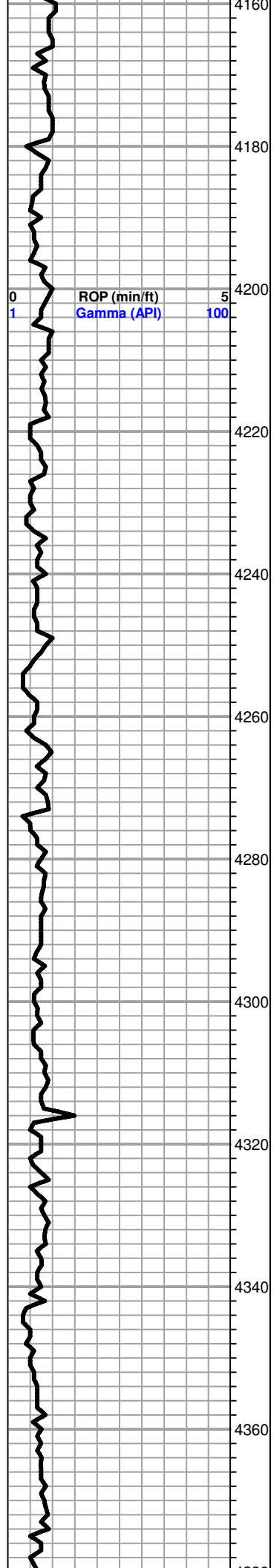
4120 ○ Limestone: cream-light tan, fine to slightly medium crystalline, some fossiliferous, sub chalky, odor, slight show, gas bubble, no show free oil
*

4140 Limestone: as above, no shows

4160 Limestone: cream-light tan, fine crvstalline, very chalky



Geologist on site @ 4120'



Limestone: cream-light tan, fine crystalline, very cherty

4160

Limestone: cream-medium tan, fine crystalline, poor visible porosity, dense

4180

Limestone: cream-medium tan, fine crystalline, rare piece fossiliferous, poor visible porosity

4200

Limestone: cream-medium tan-gray, fine crystalline, slightly fossiliferous, poor visible porosity

4220

Limestone: cream-light tan, fine crystalline, mealy chalky

4240

Limestone: cream-white-medium tan, fine to slightly medium crystalline, chalky

4260

Limestone: cream-light tan, fine crystalline, very slightly fossiliferous

4280

Limestone: cream-light tan-white, fine crystalline, some visible porosity, sub chalky

4300

Stark **4342'** **(-2355)**
Shale: gray-medium gray

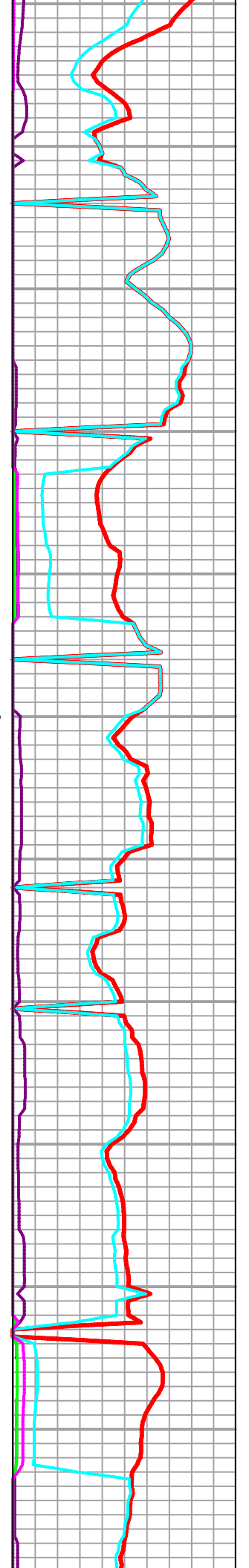
4320

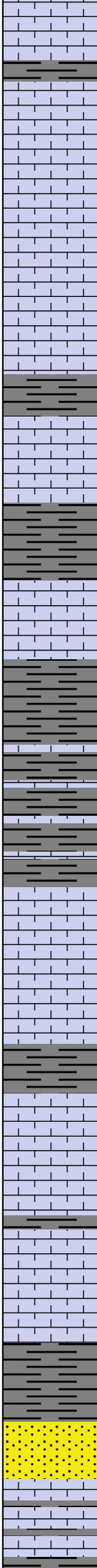
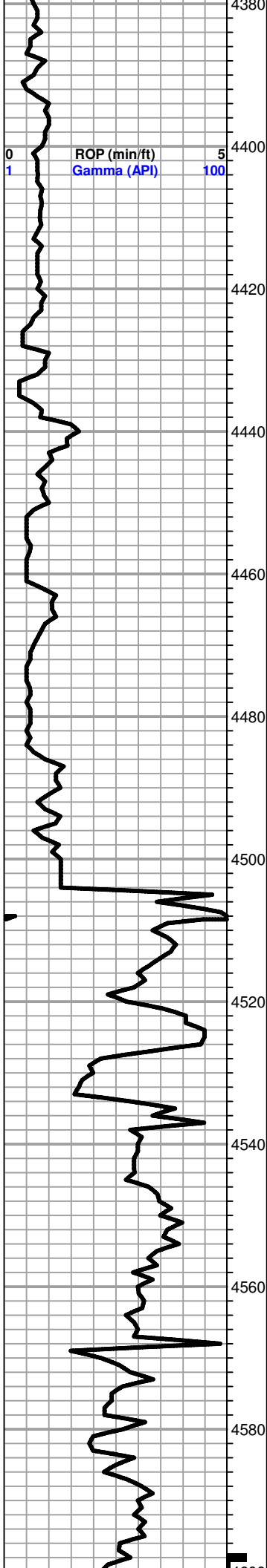
Limestone: cream-light tan-gray, fine to slightly medium crystalline, dense

4340

Limestone: cream-white-light tan, fine crystalline, some visible porosity, chalky, no shows

4360





Limestone: cream-white, fine crystalline, samples wash white

Limestone: light tan, fine crystalline, poor to no visible porosity, dense

Limestone: as above, sub shaley

Shale: dark-medium gray

B/KC 4472' (-2485)

Shale: gray-brown

Limestone: cream-gray, fine crystalline, dense, some gray shale

Bit Trip @ 4500'

Trip cavings

Limestone: cream-tan-gray, fine crystalline, dense

Shale: dark gray

Pawnee 4533' (-2546)

Limestone: cream-gray, fine crystalline, dense

Limestone: as above, dense

Limestone: cream-medium tan, fine crystalline, poor to no visible porosity, dense

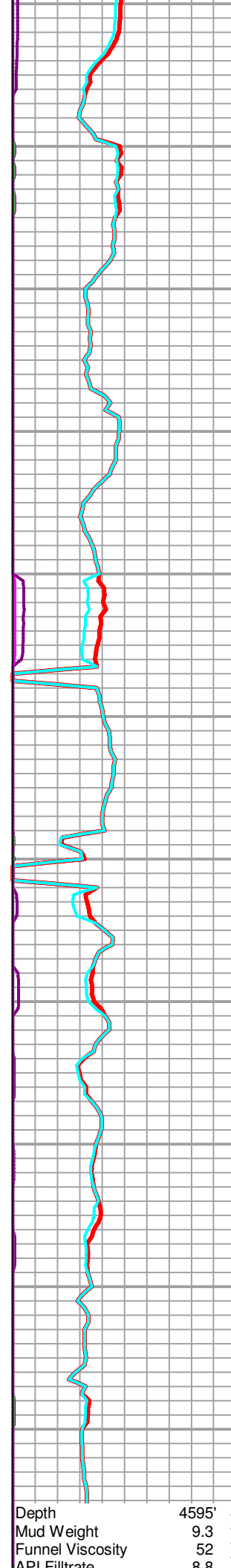
Cherokee 4568' (-2581)

Shale: dark gray-black

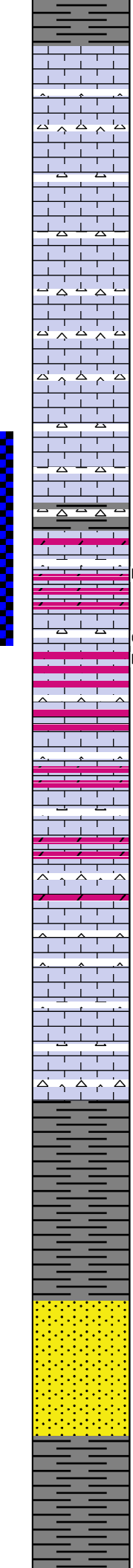
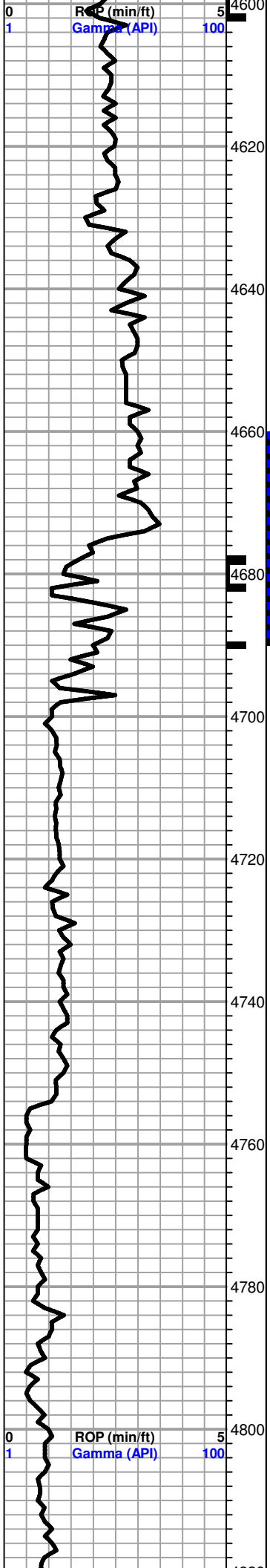
Sandstone: cream-light tan, fine grained, poorly friable, very faint odor, very slight show free oil

Shales: vari-colored, some limestone

Circulated at 4600' Shales: dark-medium gray and some gray, dense limestone



Depth	4595'
Mud Weight	9.3
Funnel Viscosity	52
API Filtrate	8.8



Viola 4606' (-2619)

Limestone: cream, fine crystalline, poor visible porosity, abundant cream-white vitreous chert, few pieces weathered with dark edge stain, no show free oil

Limestone: cream, fine crystalline, poor to fair visible porosity, soft, lots of cream white chert, no shows

Limestone: cream-light tan-pale green, dolomitic in part, chert, white-cream, no shows

Cherty limestone: as above

Limestone: cream-pale green, fine crystalline, dense chert, pale green, vitreous, no shows

Cherty limestone: as above, few pieces reddish dense limestone

Chert with some reddish shale, few calcite nodules, very dense

Circulated at 4680' 95% Chert: white-cream, some dolomitic limestone, trace weathered chert with spotted fluorescence, no show free oil

Circulated at 4690' Chert: cream, dolomitic in part, some vugular porosity, trace cream, sucrosic dolomite, fine crystalline, good odor, bright fluorescence with slight show free oil

Dolomitic limestone: cream, fine crystalline, sucrosic, lots of cream-white vitreous chert, opaque, sharp and blocky, very faint odor, spotted fluorescence, no show free oil

Dolomitic limestone: cream-white, finely sucrosic, chert as above, barren

Limestone: pale green-white, fine crystalline, very cherty

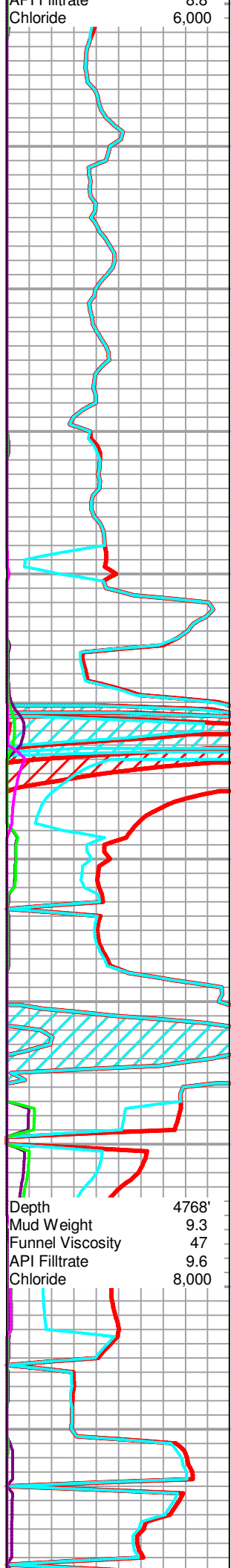
Simpson Shale 4754' (-2767)

Few pieces turquoise, blue shale

Shales: Simpson type

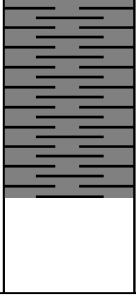
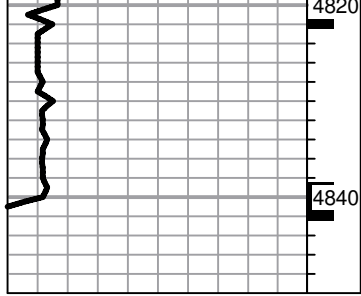
Simpson Sand 4784' (-2797)

Sandstone: gray, fine grained, tite, no shows



Depth	4768'
Mud Weight	9.3
Funnel Viscosity	47
API Filtrate	9.6
Chloride	8,000

Circulated at 4801' Sandstone: clean to frosted white, fine to medium



Circulated at 4821' Sandstone: clear to frosted white, fine to medium grained, moderately friable, no shows, lots of turquosie shale and pyrite

Circulated at 4840' Shale: Simpson type

