

**TRILOBITE
TESTING, INC.**

DRILL STEM TEST REPORT

Daystar Petroleum, Inc.

16 22s 33w Finney, Ks

PO Box 560
Eureka, Ks 67045

Graves #3

Job Ticket: 64370

DST#: 1

ATTN: Jon Christensen

Test Start: 2019.08.04 @ 13:01:00

GENERAL INFORMATION:

Formation: **LKC I and Upper J**

Deviated: No Whipstock: ft (KB)

Time Tool Opened: 15:23:15

Time Test Ended: 21:47:00

Test Type: Conventional Bottom Hole (Initial)

Tester: Bradley Walter

Unit No: 78

Interval: **4032.00 ft (KB) To 4061.00 ft (KB) (TVD)**

Total Depth: 4061.00 ft (KB) (TVD)

Hole Diameter: 7.88 inches Hole Condition: Good

Reference Elevations: 2882.00 ft (KB)

2871.00 ft (CF)

KB to GR/CF: 11.00 ft

Serial #: 8522

Inside

Press@RunDepth: 177.82 psig @ 4033.00 ft (KB)

Start Date: 2019.08.04

End Date:

2019.08.04

Start Time: 13:01:00

End Time:

21:47:00

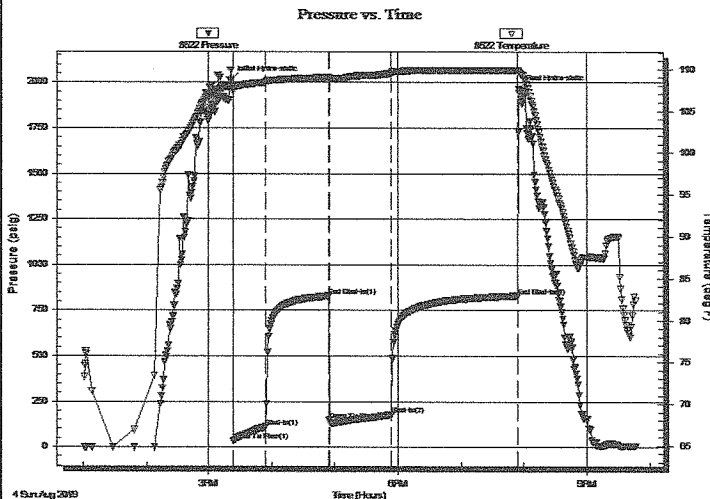
Capacity: 8000.00 psig

Last Calib.: 2019.08.04

Time On Btm: 2019.08.04 @ 15:21:00

Time Off Btm: 2019.08.04 @ 19:55:15

TEST COMMENT: 30- IF: BOB @ 21 min, built to 14".
60- IS: 3/4" return.
60- FF: BOB @ 25 min, built to 19 1/2"
120- FS: No return.



PRESSURE SUMMARY

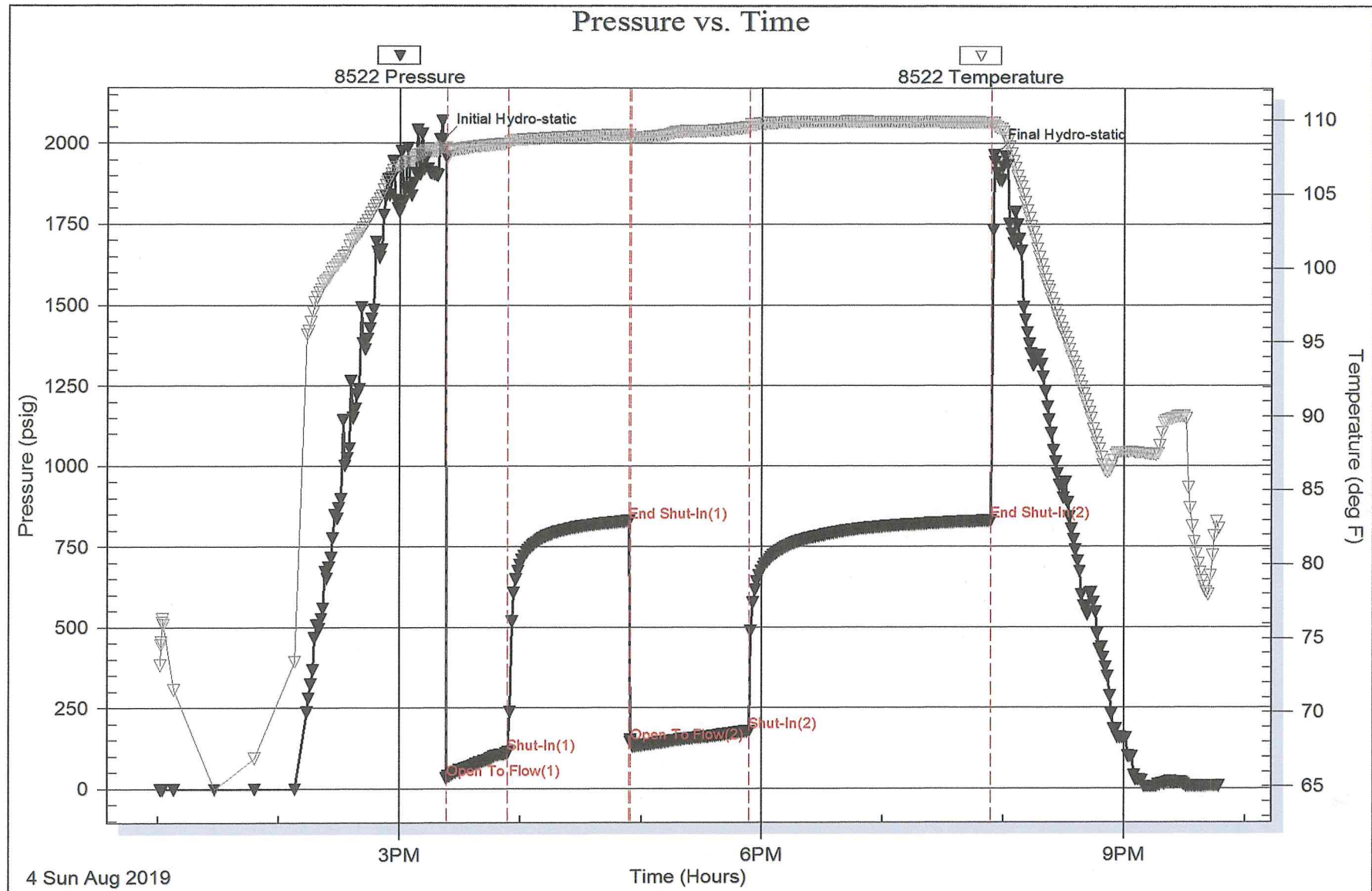
Time (Min.)	Pressure (psig)	Temp (deg F)	Annotation
0	2010.43	108.11	Initial Hydro-static
3	31.81	107.42	Open To Flow (1)
33	109.37	108.40	Shut-In(1)
93	829.01	109.01	End Shut-In(1)
94	143.38	108.74	Open To Flow (2)
153	177.82	109.51	Shut-In(2)
273	829.47	109.82	End Shut-In(2)
275	1962.94	109.82	Final Hydro-static

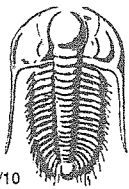
Recovery

Length (ft)	Description	Volume (bbl)
120.00	gw ocm 20g 15w 30o 35m	0.59
120.00	gmco 25g 20m 55o	0.59
170.00	go 30g 70o	2.34
0.00	380' GIP	0.00

Gas Rates

	Choke (inches)	Pressure (psig)	Gas Rate (Mcf/d)





TRILOBITE TESTING INC.

1515 Commerce Parkway • Hays, Kansas 67601

Test Ticket

NO. 64370

Well Name & No. Graves #3 Test No. 1 Date 8/04/2019
 Company Daystar Petroleum, Inc Elevation 2882 KB 2871 GL
 Address PO Box 560 Eureka, ks 67045
 Co. Rep / Geo. Jon Christensen Rig Muffin #21
 Location: Sec. 16 Twp. 28s Rge. 33w Co. Finney State Ks

Interval Tested 4032 - 4061 Zone Tested LKC I and upper J
 Anchor Length 29' Drill Pipe Run 3766 Mud Wt. 9.1
 Top Packer Depth 4027 Drill Collars Run 245 Vis 6.7
 Bottom Packer Depth 4032 Wt. Pipe Run Ø WL 7.2
 Total Depth 4061 Chlorides 2050 ppm System LCM 4#

Blow Description TF: BOB @ 21 min built to 14".
ISI: 3/4" return.
FF: BOB @ 25 min built to 19 1/2".
FSI: No return.

**10,800 c1 -
on DST wtr
by Mud Co.**

Rec	Feet of	%gas	%oil	%water	%mud
<u>170</u>	<u>60</u>	<u>30</u>	<u>70</u>		
<u>120</u>	<u>GMCO</u>	<u>25</u>	<u>55</u>	<u>20</u>	
<u>120</u>	<u>GWOCM</u>	<u>20</u>	<u>30</u>	<u>15</u>	<u>35</u>
<u>380</u>	<u>GTP</u>				

Rec Total 410 BHT 110 Gravity 2.6 API RW — @ — °F Chlorides — ppm

(A) Initial Hydrostatic 2010 Test — T-On Location 2330 8/03
 (B) First Initial Flow 32 Jars — T-Started 0101
 (C) First Final Flow 109 Safety Joint — T-Open 0324
 (D) Initial Shut-In 829 Circ Sub — T-Pulled 0754
 (E) Second Initial Flow 143 Hourly Standby — T-Out —
 (F) Second Final Flow 178 Mileage 60 RT Comments —
 (G) Final Shut-In 829 Sampler —
 (H) Final Hydrostatic 1963 Straddle — Ruined Shale Packer —
 Shale Packer — Ruined Packer —
 Extra Packer — Extra Copies —
 Extra Recorder — Sub Total —
 Day Standby — Total —
 Accessibility — MP/DST Disc't —
 Sub Total —

Approved By — Our Representative [Signature]

Trilobite Testing Inc. shall not be liable for damaged of any kind of the property or personnel of the one for whom a test is made, or for any loss suffered or sustained, directly or indirectly, through the use of its equipment, or its statements or opinion concerning the results of any test, tools lost or damaged in the hole shall be paid for at cost by the party for whom the test is made.