



Liberal Yard #1717 - Phone 620-624-2277 - 1700 S. Country Estates Road, Liberal KS 67901

PRESSURE PUMPING Job Log

Customer:	O'Brien Energy	Cement Pump No.:	38117, 19919 16Hrs.	Operator TRK No.:	96816	
Address:	18 Congress St. Suite 207	Ticket #:	1718 19572 L	Bulk TRK No.:	19827, 37725	30463, 19578 Oscar
City, State, Zip:	Portsmouth NH 03801	Job Type:	Z-42 Cement Surface Casing			
Service District:	1718 - Liberal, Ks.	Well Type:	OIL			
Well Name and No.:	Preedy 5-9	Well Location:	9-33-29	County:	Meade	State: Kansas

Type of Cmt	Sacks	Additives	Truck Loaded On		
A-Con' Blend	375	3% Calcium Chloride, 1/4# Polyflake, .2%WCA-1	19827, 37725	Front	Back
Premium Plus Cement	150	2% Calcium Chloride, 1/4# Polyflake	30463, 19578 Oscar	Front	Back
				Front	Back

Lead/Tail:	Weight #1 Gal.	Cu/Ft/sk	Water Requirements	CU. FT.	Man Hours / Personnel	
Lead:	11.4	2.95	18.1	1106.25	TT Man Hours:	64
Tail:	14.8	1.34	6.33	201	# of Men on Job:	3

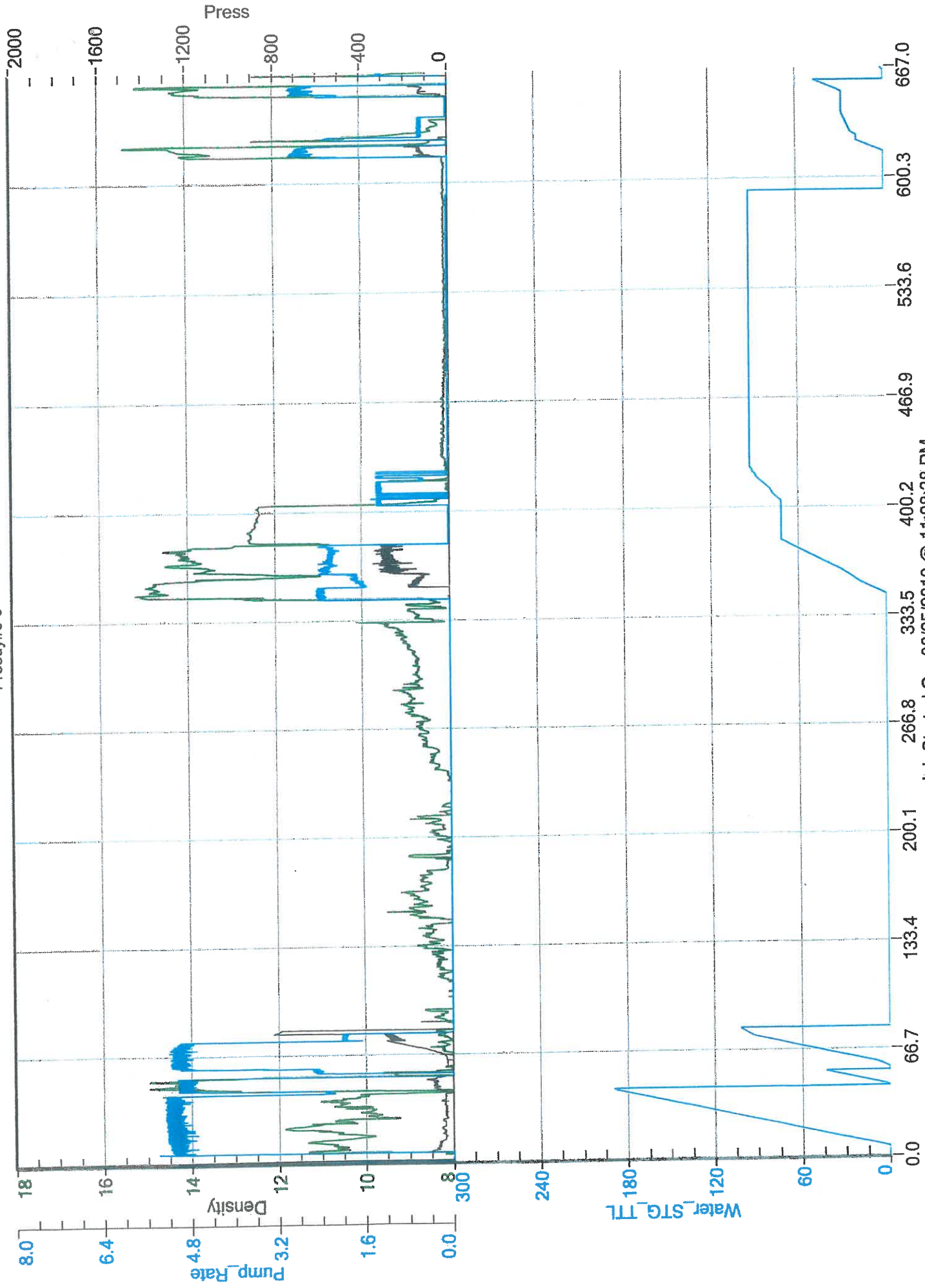
Time (am/pm)	BPM	Volume (BBLS)	Pumps		Pressure(PSI)		Description of Operation and Materials
			T	C	Tubing	Casing	
19:45							ON LOCATION
20:15							SAFETY MEETING
9:00 PM							RIG UP
10:30 PM							RIG TO CIRCULATE
10:45 PM							SAFETY MEETING
23:05							RIG TO PT
23:09							PRESSURE TEST TO 2210PSI
11:15 PM	5	197.0 slurry				100	PUMP 375SX LEAD @ 11.4#
12:53	5	35.7 slurry				80	PUMP 150SX TAIL @ 14.8#
0:02							SHUTDOWN / DROP PLUG
0:04	5	10				40	DISPLACE
	5	20				30	
	5	30				30	
	5	40				30	
	5	50				60	
	5	60				100	
	5	70				180	
	5	80				250	
0:24	4.9	87				300	SLOW RATE TO 2.0BPM @ 260PSI
	2	90				270	
0:29	2	97.4				310	LAND PLUG / PRESSURE UP TO PSI
0:31							RELEASE BACK --- FLOAT HELD
							NO CEMENT TO SURFACE / WAIT TO 1"

Size Hole	12 1/4"	Depth	1569'		TYPE	Plug Container	
Size & Wt. Csg.	8 5/8" 24#	Depth	1572.80'	New / Used	Packer	Depth	
Landing Press.	316.5psi	Depth			Retainer	Depth	
Shoe Jt.	40.60'	Type			Perfs	CIBP	

Customer Signature:	Basic Representative:	Daniel Beck
	Basic Signature:	
	Date of Service:	6/25/2019

O'Brien Energy

Preedy#5-9



Job Started On: 06/25/2019 @ 11:08:38 PM



Liberal Yard #1717 - Phone 620-624-2277 - 1700 S. Country Estates Road, Liberal KS 67901

PRESSURE PUMPING Job Log

Customer:	Obrien Energy	Cement Pump No.:	70897, 19919 6Hrs.	Operator TRK No.:	96816	
Address:	18 Congress St. Suite 207	Ticket #:	1718 19577 L	Bulk TRK No.:	14354, 19808 Kirby	14354, 19808
City, State, Zip:	Portsmouth NH 03801	Job Type:	Z42 - Cement Production Casing			
Service District:	1718 - Liberal, Ks.	Well Type:	OIL			
Well Name and No.:	Preedy 5-9	Well Location:	5,33,29	County:	Meade	State: Ks

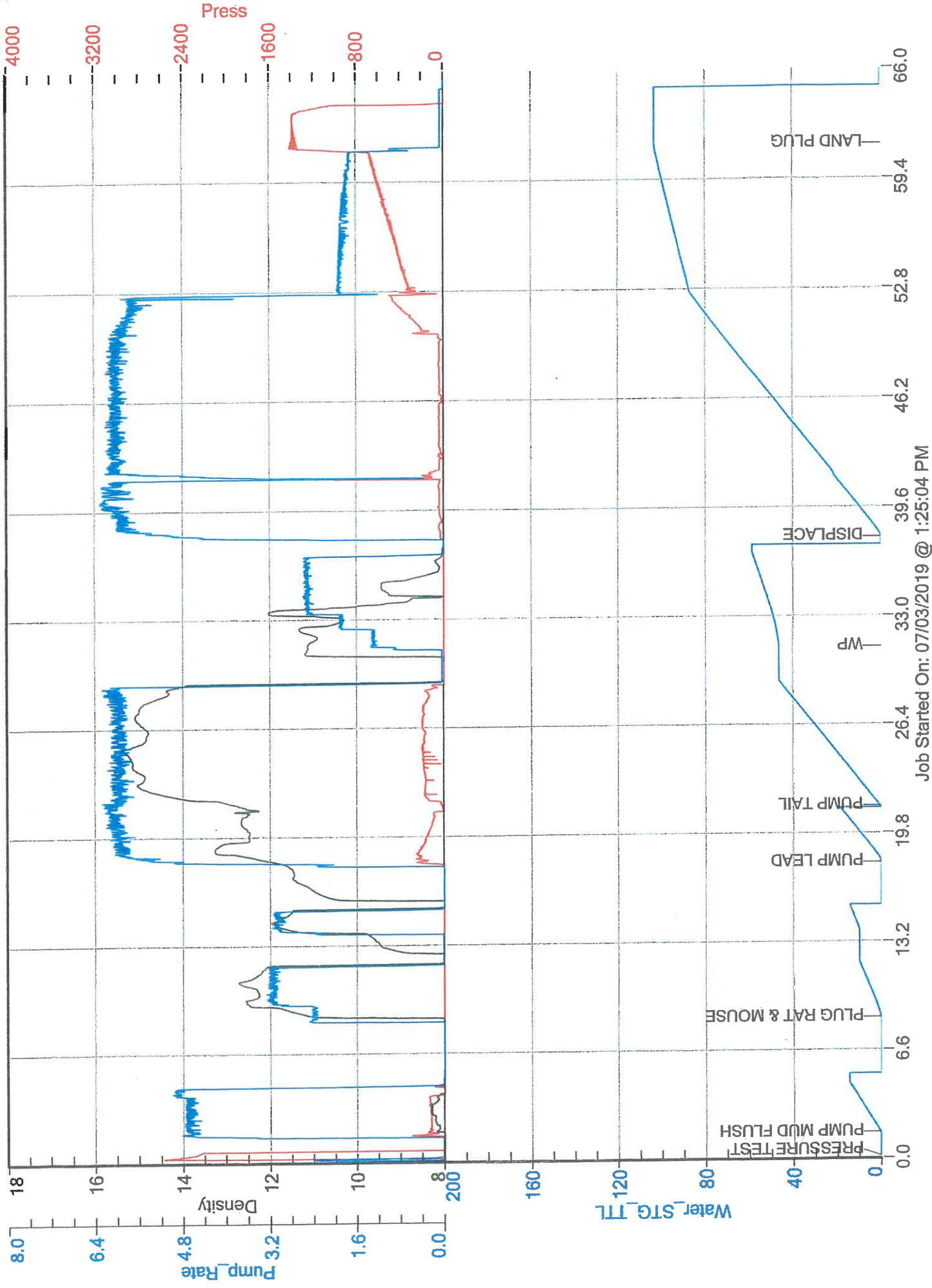
Type of Cmt	Sacks	Additives	Truck Loaded On		
60/40 Poz	50		14354, 19808 Kirby	Front	Back
AA2	185	5% w-60, 10% Salt, .6% c-17, 1/4# Defoamer, 5# Gilsonite, 1/3#/sk OWB	14354, 19808	Front	Back
Rat & Mouse	50			Front	Back
Lead/Tail:	Weight #1 Gal.	Cu/Ft/sk	Water Requirements	CU. FT.	Man Hours / Personnel
Lead:	12	2.08	11.89	104	TT Man Hours: 40.5
Tail:	14.8	1.52	6.7	281.2	# of Men on Job: 3

Time (am/pm)	BPM	Volume (BBLs)	Pumps		Pressure(PSI)		Description of Operation and Materials
			T	C	Tubing	Casing	
9:05							ON LOCATION
9:30							SAFETY MEETING
10:00 AM							RIG UP
11:00 AM							RIG TO CIRCULATE
11:15 AM							SAFETY MEETING
13:25	4.6	11.9				170	PUMP 500GALLONS MUD FLUSH
13:30							PLUG RAT & MOUSE W/ 50SX
1:43 PM	6	18.5 slurry				240	PUMP 50SX LEAD @ 12#
13:46	6	50.0 slurry				120	PUMP 185SX TAIL @ 14.8#
13:54							SHUTDOWN / DROP PLUG / WP
14:03	6	10				40	DISPLACE W/ 3%KCL
	6.2	20				40	
	6	30				40	
	6	40				40	
	6	50				40	
	6	60				40	
	6	70				250	
	5.8	80				350	
	5.7	88				420	SLOW RATE TO 2.0BPM @ 320PSI
	1.8	90				600	
14:27	1.7	98.7				680	LAND PLUG / PRESSURE UP TO 1400PSI
14:29							RELEASE BACK --- PLUG HELD
							JOB COMPLETE

Size Hole	7 7/8"	Depth			TYPE	Plug Container	
Size & Wt. Csg.	4 1/2" 10.5#	Depth	6235'	New / Used	Packer		Depth
tbg.	704.1psi	Depth			Retainer		Depth
Top Plugs	22.25'	Type			Perfs		CIBP

Customer Signature:	Basic Representative:	Daniel Beck
	Basic Signature:	
	Date of Service:	7/3/2019

O'Brien Energy Preedy5-9



Job Started On: 07/03/2019 @ 1:25:04 PM