

GEOLOGICAL REPORT

WellSight Systems

Scale 1:240 (5"=100') Imperial
Measured Depth Log

Well Name: GARISON 1-25
Well Id:
Location: SECTION 25-T33S-5E
License Number: 15-035-24705
Spud Date: 6/20/2019
Surface Coordinates: 660 FNL 660 FEL

Region: COWLEY CO, KS
Drilling Completed: 6/26/2019

Bottom Hole
Coordinates:
Ground Elevation (ft): 1312 K.B. Elevation (ft): 1322
Logged Interval (ft): 500 To: RTD Total Depth (ft): 3535
Formation:
Type of Drilling Fluid: CHEM

Printed by MudLog from WellSight Systems 1-800-447-1534 www.WellSight.com

OPERATOR

Company: VAL ENERGY, INC
Address: 125 N. Market Ste. 1110
Wichita, Kansas 67202

GEOLOGIST

Name: JOE M.BAKER
Company: Mako Operating Co., LLC
Address: P.O Box 931
Andover Kansas 67002
316-253-9696

E-Log Tops

IATAN	1839 (-517)
STALNAKER	1860 (-538)
KANSAS CITY	2506(-1184)
MARMATON /ALTAMONT	2708 (-1386)
CHEROKEE SH	2833(-1511)
MISS CHERT	3098 (-1776)
MISS LIME	3104 (-1782)
KINDERHOOK	3520 (-2198)
RTD	3535 (-2213)
LTD	3535 (-2213)

Comments

Samples were examined from 500 to RTD
Pipe was set to complete the Miss Chert/Lime

ROCK TYPES

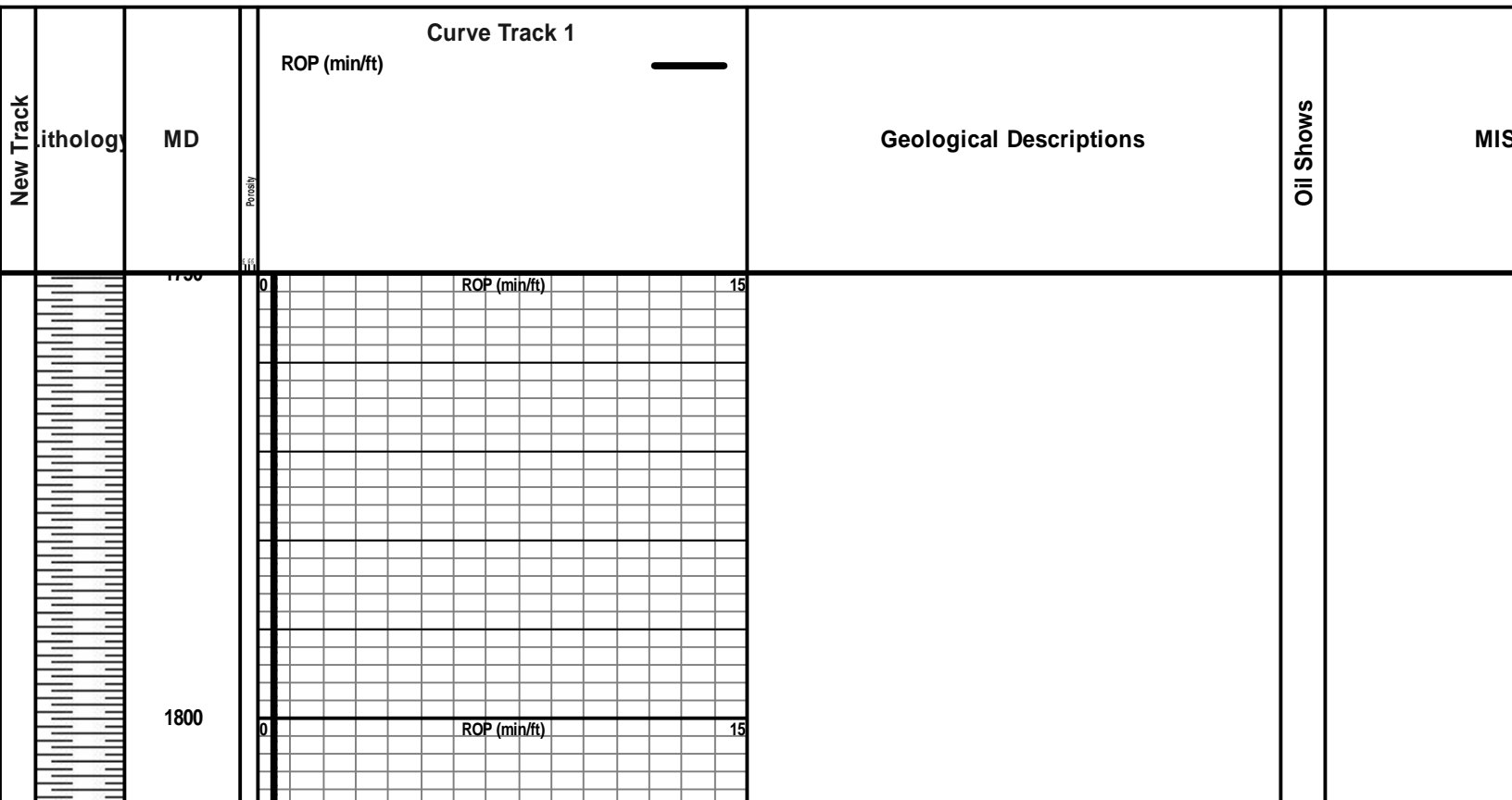
Anhy	Clyst	Gyp	Mrlst	Shgy
Bent	Coal	Igne	Salt	Sltst
Brec	Congl	Lmst	Shale	Ss
Cht	Dol	Meta	Shcol	Till

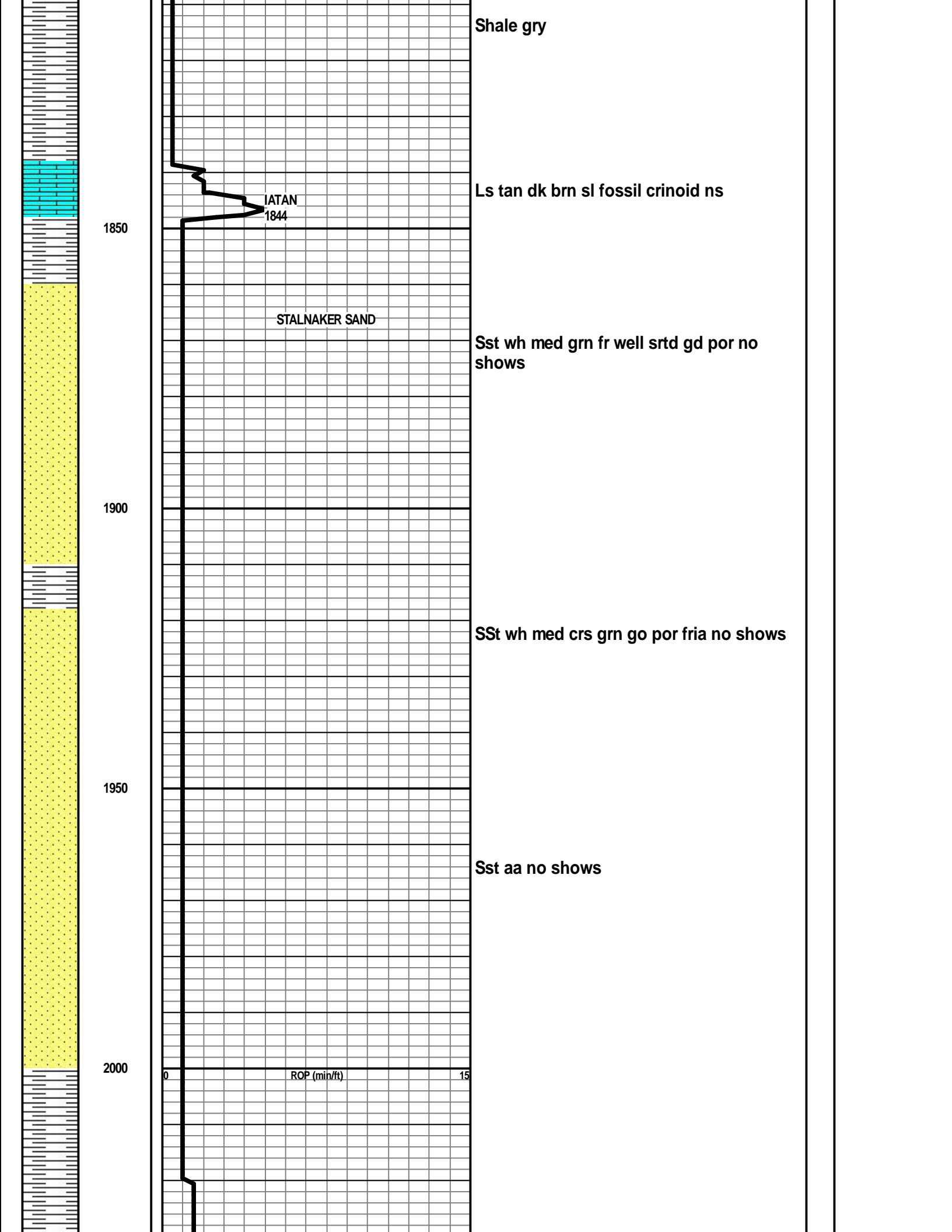
ACCESSORIES

MINERAL	Gyp	FOSSIL	Ostra	Sltstrg
Anhy	Hvymin	Algae	Pelec	Ssstrg
Arggrn	Kaol	Amph	Pellet	TEXTURE
Arg	Marl	Belm	Pisolite	Boundst
Bent	Minxl	Bioclst	Plant	Chalky
Bit	Nodule	Brach	Strom	Cryxln
Brecfrag	Phos	Bryozoa	STRINGER	Earthy
Calc	Pyr	Cephal	Anhy	Finexln
Carb	Salt	Coral	Arg	Grainst
Chtdk	Sandy	Crin	Bent	Lithogr
Chtlt	Silt	Echin	Coal	Microxln
Dol	Sil	Fish	Dol	Mudst
Feldspar	Sulphur	Foram	Gyp	Packst
Ferrpel	Tuff	Fossil	Ls	Wackest
Ferr		Gastro	Mrst	
Glau		Oolite		

OTHER SYMBOLS

POROSITY	Vuggy	ROUNDING	Spotted	EVENT
Earthy		Rounded	Ques	Rft
Fenest	SORTING	Subrnd	Dead	Sidewall
Fracture	Well	Subang	INTERVAL	
Inter	Moderate	Angular	Core	
Moldic	Poor	OIL SHOW	Dst	
Organic		Even		
Pinpoint				





2050

Ls dk gry fnxln ns

Slst gry fngrn mic ns

2100

Ls dk brn dns

2150

shales dk gry

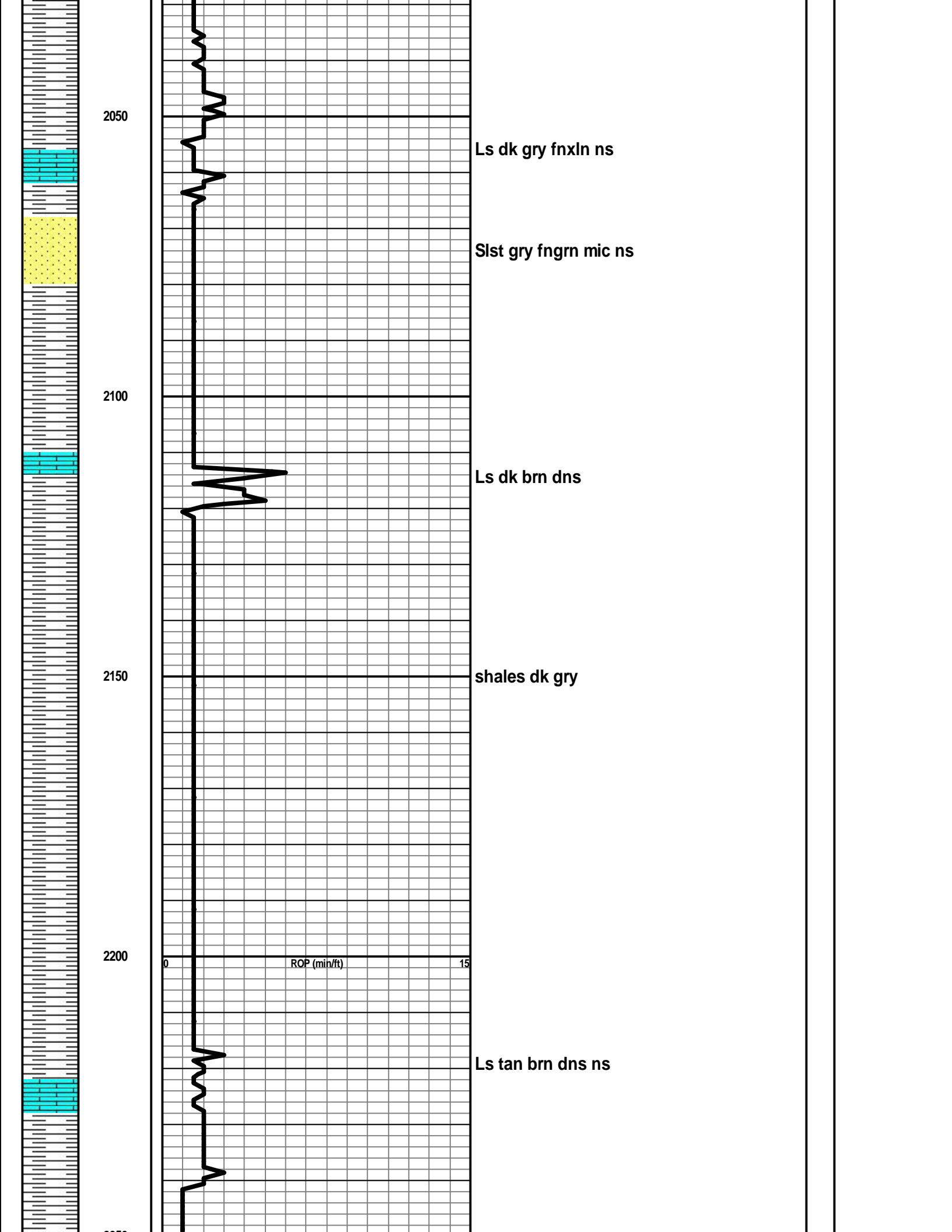
2200

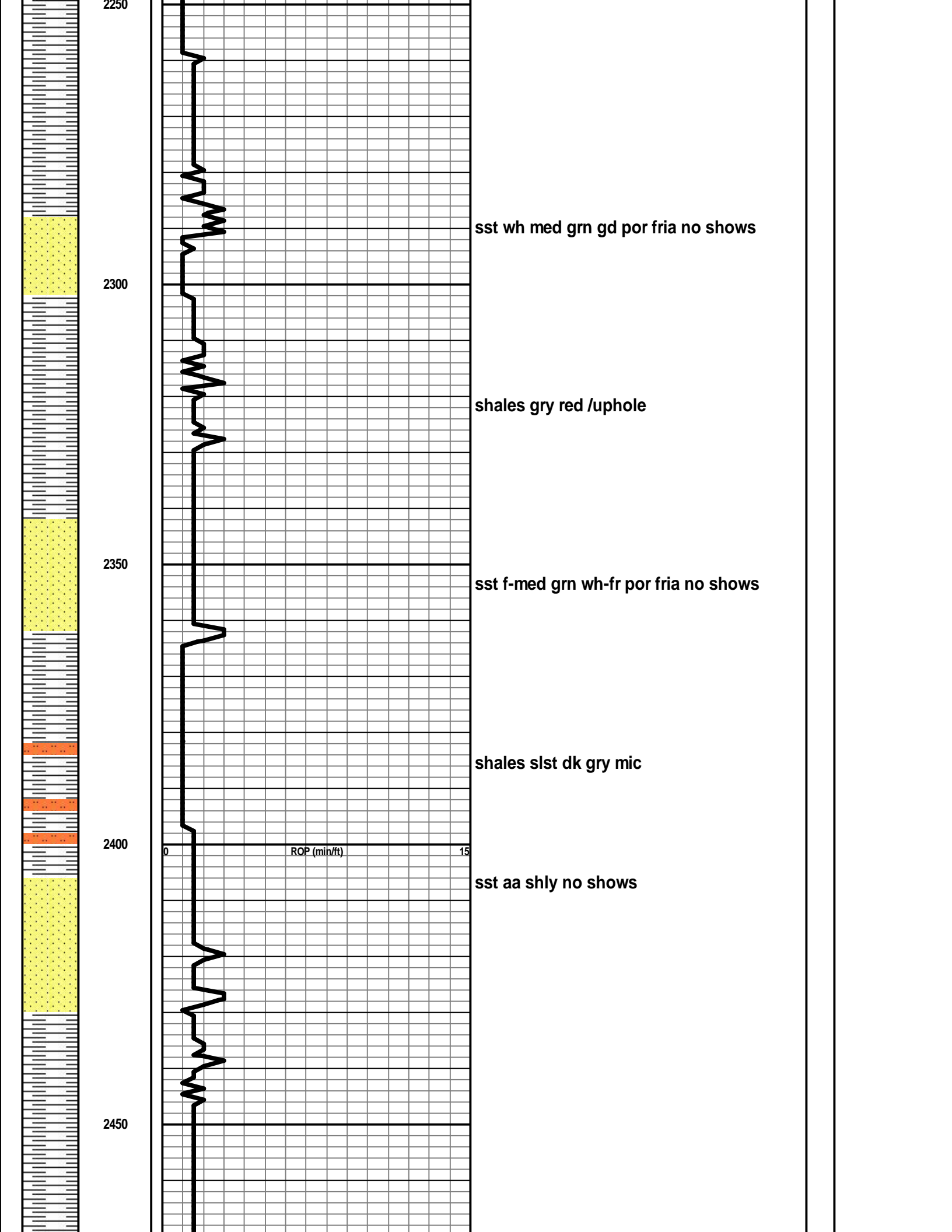
0

ROP (min/ft)

15

Ls tan brn dns ns





2250

2300

2350

2400

2450

sst wh med grn gd por fria no shows

shales gry red /uphole

sst f-med grn wh-fr por fria no shows

shales slst dk gry mic

sst aa shly no shows

ROP (min/ft) 0 15

2500

KANSAS CITY

ls tan/dk gry fnxln dns ns

DODDS CREEK SD

sst lt gry f-medgrn fr-well srted fria no shows

2550

ls tan brn vy fnxln micronl no por ns

shale blk carb

ls tan fnxln sl fossil no show

HUSHPUCKNEY

shale blk carb

2600

ROP (min/ft) 15

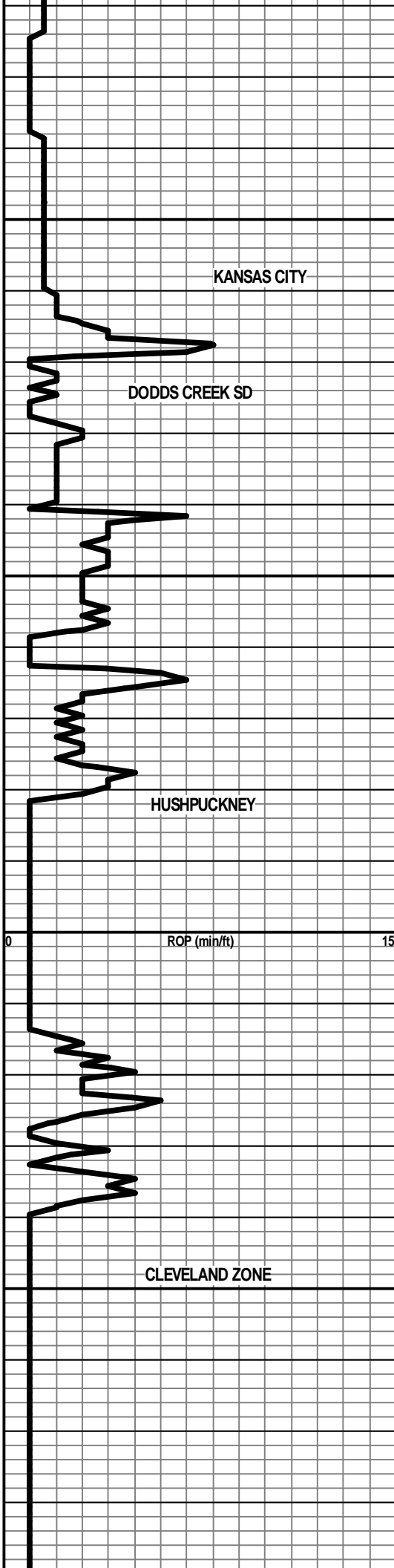
ls tan fnxln sl fossil trc fluor stn no odor nsfo

2650

CLEVELAND ZONE

slst gry fngn mic no gd por ns

ls tan crm vy fossil ool ns aa fnxln dns no vis shows



KANSAS CITY
 ls tan/dk gry fnxln dns ns
 DODDS CREEK SD
 sst lt gry f-medgrn fr-well srted fria no shows
 ls tan brn vy fnxln micronl no por ns
 shale blk carb
 ls tan fnxln sl fossil no show
 HUSHPUCKNEY
 shale blk carb
 ROP (min/ft) 15
 ls tan fnxln sl fossil trc fluor stn no odor nsfo
 CLEVELAND ZONE
 slst gry fngn mic no gd por ns
 ls tan crm vy fossil ool ns aa fnxln dns no vis shows

2700

slst gry fngrn ns

shale gry fiss

ALTAMONT

ls crm fnxln/foss, fnxln chty ns

shale blk

2750

ls crm tan vfnxln dns ns

shale slst gry

PAWNEE

ls tan brn fnxln-dns ns

chty wh dns fresh

shale blk

2800

0

ROP (min/ft)

15

FT SCOTT

ls tan fnxln few psc w/ fluor/lt odor trc show free oil at brk

ls wh crm fnxln fluor in 30% fr odor SSFO

shale blk carb

2850

CHEROKEE

shale blk

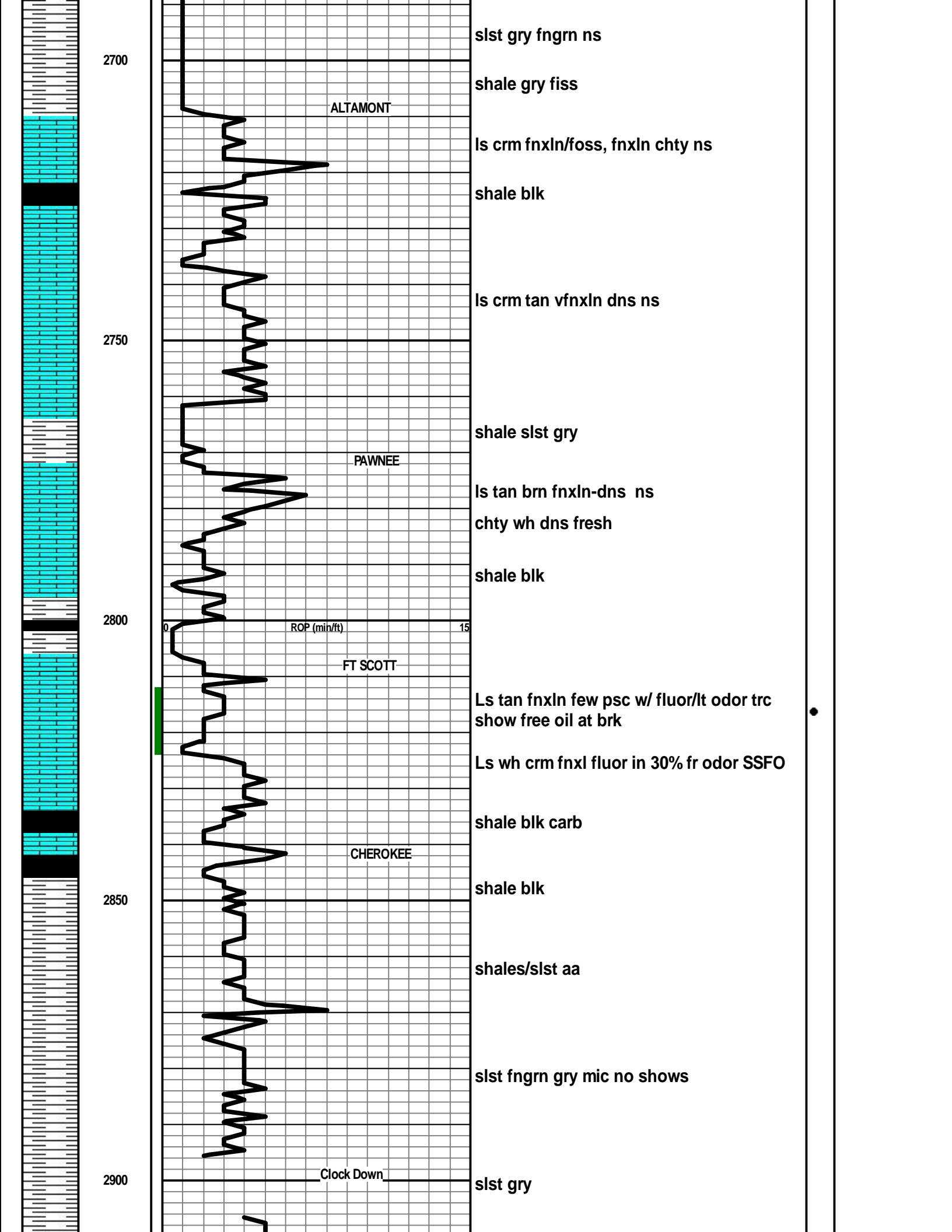
shales/slst aa

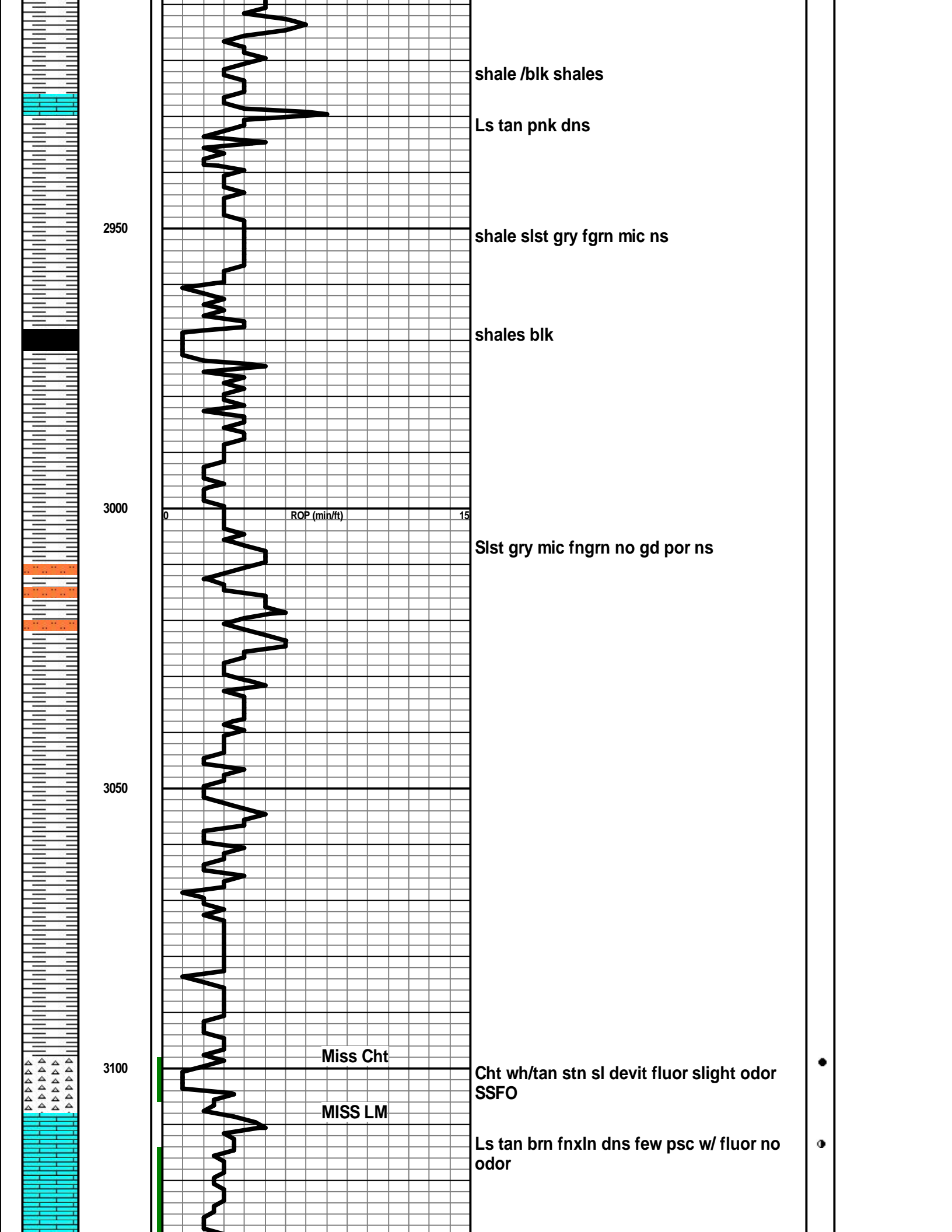
slst fngrn gry mic no shows

2900

Clock Down

slst gry





3150

3200

3250

3300

CFS @ 3140' 40"

CFS @ 3180 40"

ROP (min/ft)

BIT TRIP @
3315

Ls tan dk brn dns microIn no vis shows
no odor

Ls lt tan fnIn sl interxIn por no shows

Increase in dk gry blk shales

Shales lt gm grn

Ls tan brn vfnxIn dns sl cherty wh dns
fresh no shows

Ls tan brn aa dns increase in shales dk
gry red

Ls lt tan fnxIn brittle poss lt show free oil
@ brk

Ls aa lt tan fnxIn vy dns

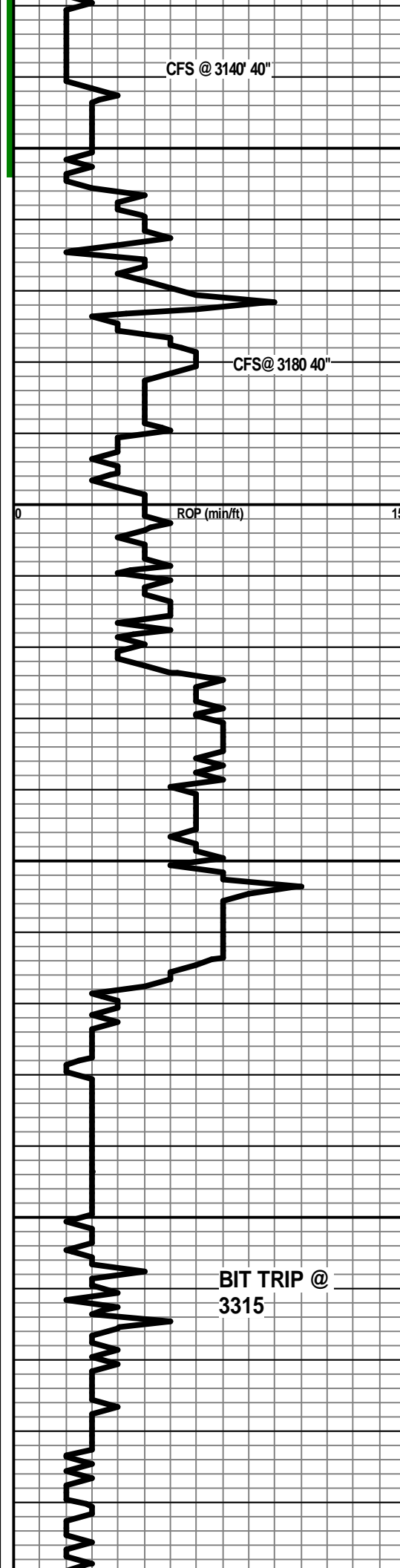
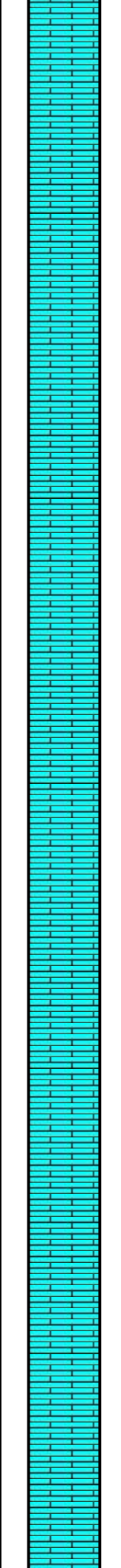
Ls aa tan fnxIn abund shales aa gry/grn

Ls tan dk brn dns microIn no vis shows

Ls tan brn aa dns ,shly in pt few psc pyrite

Ls dk brn dns brittle no por ns

??



Ls tan dk brn dns microIn no vis shows
no odor

Ls lt tan fnIn sl interxIn por no shows

Increase in dk gry blk shales

Shales lt gm grn

Ls tan brn vfnxIn dns sl cherty wh dns
fresh no shows

Ls tan brn aa dns increase in shales dk
gry red

Ls lt tan fnxIn brittle poss lt show free oil
@ brk

Ls aa lt tan fnxIn vy dns

Ls aa tan fnxIn abund shales aa gry/grn

Ls tan dk brn dns microIn no vis shows

Ls tan brn aa dns ,shly in pt few psc pyrite

Ls dk brn dns brittle no por ns

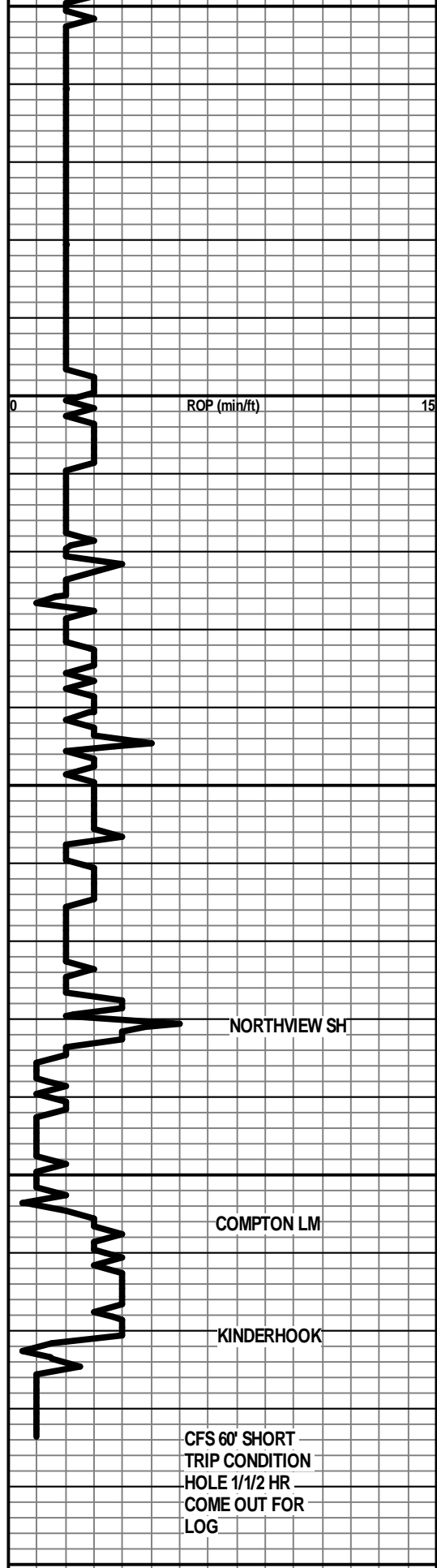
3350

3400

3450

3500

3550



Ls brn wh mott mostly dns cherty in pt a few psc w/ fluor no odor nsfo, sl chalky

Ls aa w/ chert ft odor??

Ls dk brn dns aa chalky/some chert

Ls white/ cherty sl por few psc w/ dull fluor no odor nsfo

Ls a wh/cherty chalky

Ls aa white chalky wash white

Ls aa white sl chalkyfnxn few psc of chert no shows

NORTHVIEW SH

Shales slst green

COMPTON LM

Ls white crm dns no por ns

KINDERHOOK

Shale dk gry

CFS 60' SHORT TRIP CONDITION HOLE 1/1/2 HR COME OUT FOR LOG

RTD 3535 (-2213)

LTD 3535 (-2213)

samples changed to white

○

○

2600