



Scale 1:240 (5"=100') Imperial  
Measured Depth Log

Well Name: Flax A #1-16  
 API: 15-135-26082  
 Location: SE SE NW Sec. 16-T16S-R24W  
 License Number: 9408  
 Spud Date: 9/23/2019  
 Surface Coordinates: 2310' FNL & 2970' FEL

Region: Ness County, KS.  
 Drilling Completed: 10/1/2019

Bottom Hole Coordinates:  
 Ground Elevation (ft): 2530'      K.B. Elevation (ft): 2537'  
 Logged Interval (ft): 3675'      To: TD      Total Depth (ft): 4604'  
 Formation: MISSISSIPPI  
 Type of Drilling Fluid: Chemical Mud

Printed by MudLog from WellSight Systems 1-800-447-1534 www.WellSight.com


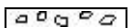

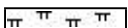







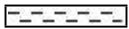

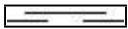




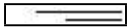
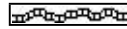
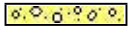

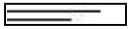
OPERATOR

Company: Trans Pacific Oil Corporation  
 Address: 100 S Main St. Suite #200  
 Wichita, KS. 67202

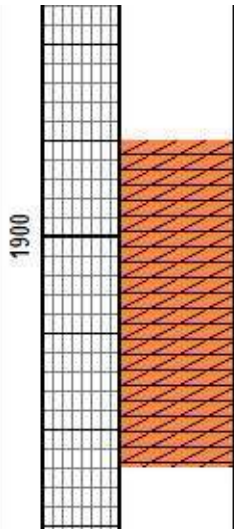
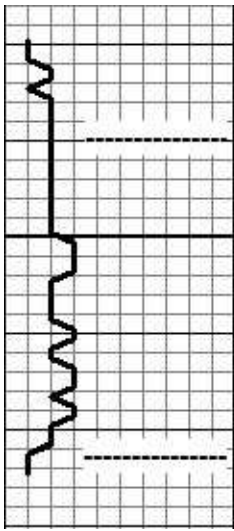
GEOLOGIST

Name: Nick Hixon  
 Company: Trans Pacific Oil Corporation  
 Address: 100 S Main St. Suite #200  
 Wichita, KS. 67202

ROCK TYPES

 Siltstn	 Brec	 Dol	 Mrlst	 Siltst
 Grysh	 Cht	 Gyp	 Salt	 Ss
 Dolm	 Clyst	 Igne	 Shale	 Till
 Anhy	 Blksh	 Lmst	 Shcol	
 Bent	 Congl	 Meta	 Shgy	

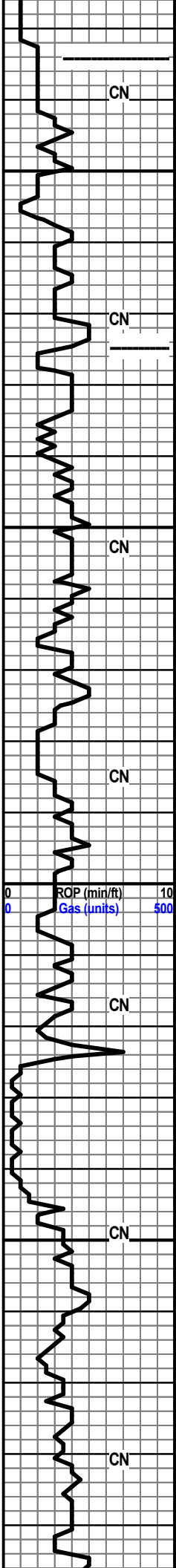




ANH. 1888' (+649')  
ELOG 1890' (+647')

BASE ANH. 1922' (+615')  
ELOG 1923' (+614')

Curve Track 1 ROP (min/ft) ——— Gas (units) - - - - -	MD	Porosity	Lithology	Geological Descriptions	Comments
	37	24% 18% 12% 6%	Oil Shows	GEO ON LOCATION @ 9 AM 9/28/2019	DRILL TIME IS OFF 6', NOT CORRECTED TO THE LOG
	3800MD				
	3850			LS: GRY - BRN, F XLN, DSE, FOSS IN PT, POOR INT XLN POR, NSFO.  LS: LT BRN, F XLN, POOR PPT & INT XLN POR, NSFO. SH: GRY.  LS: GRY - LT BRN, F XLN, DSE, POOR INT XLN POR FEW OOL PCSW/GD OOM POR NS SH:	



3900

3950

4000MD

4050

ROP (min/ft) 10  
Gas (units) 500

GRY - RD.

**HEEB. 3884' (-1347')**  
**ELOG 3876' (-1339')**

SH: BLK, CARB. LS: LT BRN, F XLN, DSE, POOR PPT POR, CHLKY IN PT, NSFO.

SH: RED - GRY, GUMMY IN PT.

LS: GRY - LT BRN, SME TAN - OFF WHT PCS IN PT, F XLN, DSE, CHLKY, POOR POR, NSFO. PYR IN PT.

SH: BLK, CARB.  
LS: AA, SH: BLK, CARB.

**LANS. 3925' (-1388')**  
**ELOG 3916' (-1379')**

LS: TAN - GRY - SME OFF WHT PCS, F XLN, FEW OOL PCS, POOR PPT & INT XLN POR, NSFO.

LS: TAN - GRY - OFF WHT, F XLN, DSE, POOR PPT & INT XLN POR, FEW OOL PCS, NS.

LS: GRY - LT BRN, F XLN, DSE, POOR PPT POR, 2 PCS W/ RARE DEAD, BLK STN, NSFO, NO ODOR.

LS: GRY - LT BRN, F XLN, SUB CHLKY IN PT, POOR POR, NS.

LS: GRY - LT BRN - TAN, F XLN, DSE, POOR PPT POR, FEW FOSS, NSFO.

LS: OFF WHT - GRY, F XLN, DSE, CHLKY IN PT, POOR PPT POR, FEW SMALL VUGS, NSFO.  
SH: GRY.

LS: AA. FEW PCS FRESH CHRT IN PT.

LS: TAN - GRY, F XLN, OOL IN PT, DSE, POOR PPT POR, NSFO.

LS: TAN - GRY, F XLN, OOL IN PT, PR - FR INT OOL POR, CHLKY IN PT, NSFO. SH: BLK, CARB.

LS: TAN - GRY, F XLN, DSE, POOR PPT POR, NS, CHLKY IN PT.

LS: OFF WHT, F XLN, CHLKY, POOR PPT POR, FRESH CHRT IN PT, NSFO.

LS: OFF WHT, OOL, GD OOM POR, NSFO, NO ODOR.

LS: OFF WHT, OOL, GD OOM POR, SME LT BRN PCS, NSFO, NO ODOR.

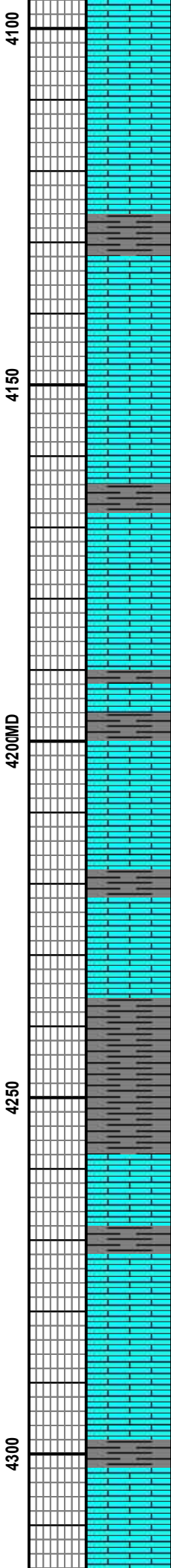
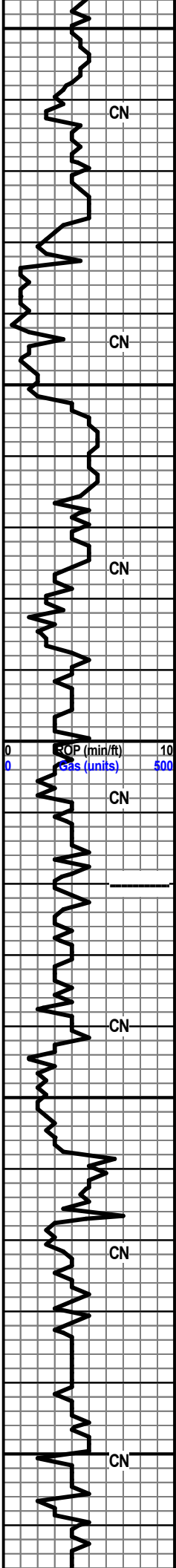
LS: AA.

LS: TAN - LT BRN, STILL CARRYING OOL PCS W/ GD OOM POR, NSFO.

LS: TAN - LT BRN, F XLN, DSE, POOR POR, OOL PCS IN PT, NSFO.

LS: TAN - LT BRN, F XLN, DSE, POOR INT XLN POR, FEW OOL PCS, NSFO.

MUD PROP.  
@ 3926'  
WT: 8.9  
VIS: 60+  
WL: 6.4  
CC: 2800  
LCM: 3#



LS: OFF WHT - GRY, F XLN, DSE, OOL IN PT, POOR PPT & OOM POR, NSFO.

LS: OFF WHT - GRY, F XLN, FEW OOL PCS W/ PR OOM POR, MOST POOR PPT POR, NSFO.

LS: OFF WHT - GRY, F XLN, DSE, POOR PPT POR, NSFO.

LS: OFF WHT - GRY, F XLN, POOR POR, NSFO.

LS: AA. SH: GRY - BLK, FIRM.

LS: OFF WHT - GRY, F XLN, DSE, OOL IN PT, PR - FR INT XLN & OOM POR, FEW SMALL VUGS, 4-5 PCS W/ DEAD BLK HEAVY STN, VSSFO ON BRK, FEW GAS BUB, V FAINT ODOR.

LS: OFF WHT - GRY, FEW OOL PCS W/ PR OOM POR, MOST POOR PPT POR, NSFO.

LS: AA.

LS: OFF WHT - GRY, F XLN, DSE, FEW OOL PCS W/ PR OOM POR, 1 PC W/ SFO. SH: GRY - BLK.

LS: OFF WHT - GRY, F XLN, DSE, POOR PPT POR, NSFO. SH: AA.

LS: OFF WHT - GRY, F XLN, DSE, OOL PCS IN PT, PR - FR PPT & OOM POR, NSFO.

SH: GRY - BLK.

LS: AA.

**BKC 4220' (-1683')**  
**ELOG 4210' (-1673')**

LS: OFF WHT - GRY, F XLN, DSE, POOR PPT POR, SUB CHLKY IN PT, NS. SH: GRY - MAR - BLK, FIRM.

LS: OFF WHT - GRY, F XLN, DSE, POOR POR, SUB CHLKY IN PT, NS. SH: AA.

LS: OFF WHT - GRY - DRK GRY, F XLN, DSE, POOR PPT POR, NS. SH: GRY - BLK.

LS: TAN - GRY - DRK GRY, F XLN, DSE, POOR PPT POR, CHLKY IN PT, NSFO. SH: GRY - BLK, FIRM.

LS: TAN - GRY - DRK GRY, F XLN, DSE, OOL PCS IN PT, PR OOM POR, NSFO, FEW FOSS.

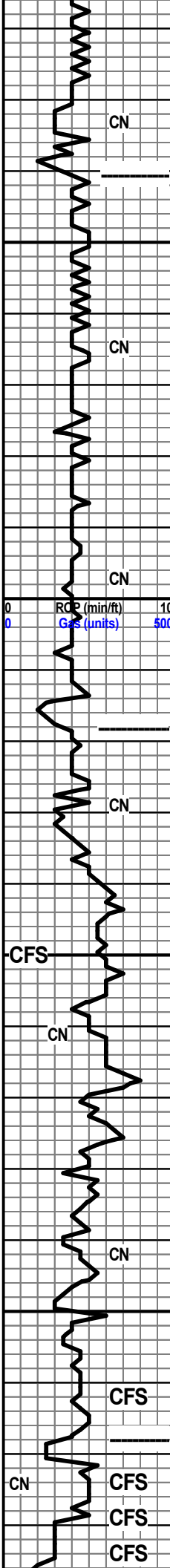
LS: TAN - BRN - GRY, F XLN, DSE, POOR PPT POR, NS. SH: GRY - BLK.

LS: TAN - CRM - GRY, F XLN, DSE, POOR PPT POR, CHLKY IN PT, NS. SH: GRY.

LS: AA.

LS: TAN - GRY, F XLN, DSE, OOL PCS IN PT, POOR PPT & OOM POR, NSFO.

LS: AA.

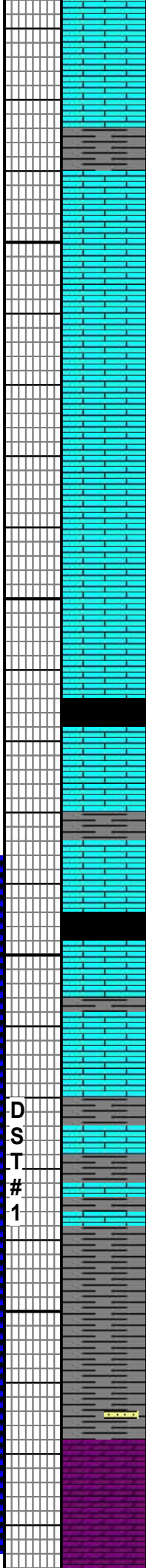


4350

4400MD

4450

4500



LS: OFF WHT - GRY, SUB CHLKY IN PT, F XLN, DSE, POOR PPT POR, NSFO.

LS: OFF WHT - GRY, F XLN, DSE, POOR POR, NSFO.

**PAW. 4341' (-1804')**  
**ELOG 4332' (-1795')**

LS: TAN - GRY, F XLN, DSE, POOR PPT POR, NSFO.

LS: TAN - GRY, F XLN, DSE, POOR PPT POR, NS. SH: GRY.

LS: TAN - GRY - DRK GRY, F XLN, DSE, POOR PPT POR, NSFO

LS: AA.

LS: OFF WHT - GRY - DRK GRY, F XLN, DSE, POOR PPT POR, CHLKY IN PT, PYR IN PT, NSFO.

LS: OFF WHT - GRY - DRK GRY, F XLN, DSE, POOR PPT POR, NS.

LS: OFF WHT - GRY, F XLN, DSE, POOR POR, NSFO. SH: ABUNDANT DRK GRY - BLK.

**FT SC. 4418' (-1881')**  
**ELOG 4410' (-1873')**

LS: GRY - BRN, F XLN, DSE, POOR PPT POR, NSFO.

LS: TAN - LT BRN, F XLN, V DSE, NO VIS POR, NS. SH: BLK, CARB.

SH: BLK, CARB.

LS: TAN, F XLN, DSE, POOR PPT POR, FEW PCS W/ SPOTTY BRN STN, VSSFO ON BRK, V FAINT ODOR.

LS: OFF WHT - TAN - GRY, F XLN, DSE, POOR PPT POR, NS, CHLKY IN PT.

LS: OFF WHT - TAN, F XLN, DSE, POOR POR, NS. SH: GRY - BLK.

LS: OFF WHT - TAN - GRY, F XLN, CHLKY, DSE, POOR PPT POR - NO VIS POR, NS. SH: BLK, CARB.

LS & SH: AA.

LS: OFF WHT - TAN - SME GRY, F XLN, DSE, CHLKY IN PT, POOR PPT POR, NSFO. SH: GRY - BLK - TEAL.

SH: GRY - BLK - GRN - TEAL.

ABUNDANT SH: GRY - BLK - GRN - TEAL. LS: TAN, F XLN, DSE, POOR PPT POR, NS. 2-3 PCS SND: VF GRN, DIRTY, SH MATRIX, FRI, NS, NO ODOR.

**MISS. 4518' (-1981')**  
**ELOG 4516' (-1979')**

- ① DOLO: BRN, F XLN, V DSE, SUCR, MOST POOR PPT POR, FEW PCS W/ PR INT XLN
- ② POR W/ SMALL VUGS, VSSFO ON BRK, FEW GAS BUB, FAINT ODOR.
- ③ DOLO: BRN, F XLN, PR - FR INT XLN & VUGY POR, FEW SAT PCS FR. CD SEQ CD

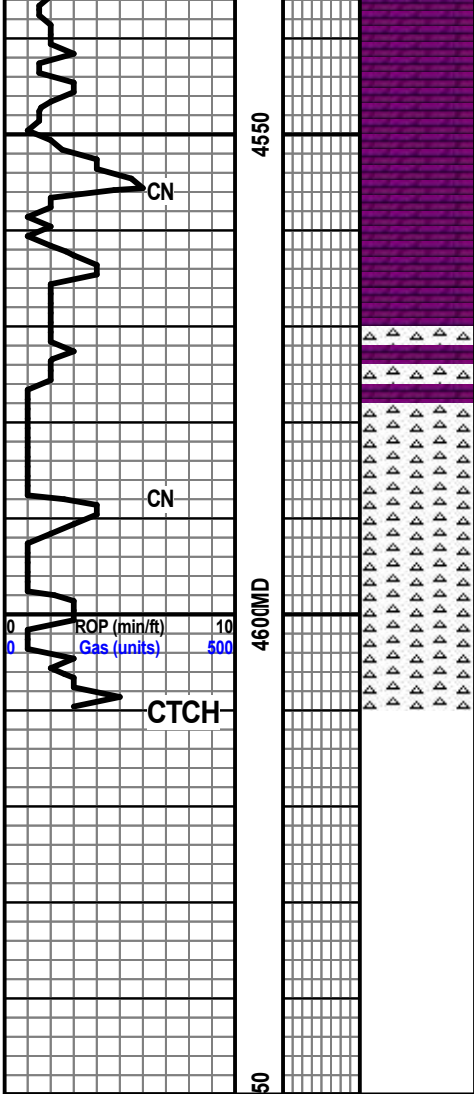
@4318'  
WT: 9.1  
VIS: 55  
WL: 6.8  
CC: 2800  
LCM: 8#

**DST #1**  
**4436' -4534'**

**SEE HEADER FOR RESULTS**

NO PIPE STRAP DUE TO HIGH WINDS

MUD PROP.  
@4529'  
WT: 9.2  
VIS: 59



VUGGY POR, FEW SAT PCS, FR - GD SFO, GD  
 ODOR.  
 ABUNDANT SH: MULTI-COLOR  
 DOLO: BRN, F XLN, DSE, POOR INT XLN &  
 VUGGY POR, WSSFO ON BRK, NO ODOR.

DOLO: BRN, F XLN, POOR INT XLN & VUGGY  
 POR, LT BRN STN IN PT, WSSFO ON BRK, NO  
 ODOR. WHT FRESH CHRT IN PT, PYR IN PT,  
 FEW FOSS.

DOLO: WHT - BRN, F XLN, DSE, POOR PPT  
 POR, SPOTTY BRN STN, NSFO, NO ODOR.

WHT TRIP CHRT: DSE, CHLKY IN PT, POOR  
 POR, NSFO, NO ODOR.

CHRT: AA.

ABUNDANT WHT TRIP CHRT: CHLKY, DSE,  
 POOR POR, NSFO. SH: GRY - BLK.

CHRT AA. DOLO IN PT: WHT - BRN, F XLN,  
 DSE, NS.

WHT CHRT: TRIP, DSE, POOR PPT POR,  
 NSFO, NO ODOR.

**RTD 4610' LTD 4604'**

WL: 7.2  
 CC: 2800  
 LCM: 3#

MUD PROP.  
 @4610'  
 WT: 9.4  
 VIS: 60  
 WL: 8.0  
 CC: 3100  
 LCM: 2#