



**COBALT ENERGY, LLC**  
**GEOLOGIST'S REPORT**  
**DRILL TIME & SAMPLE LOG**

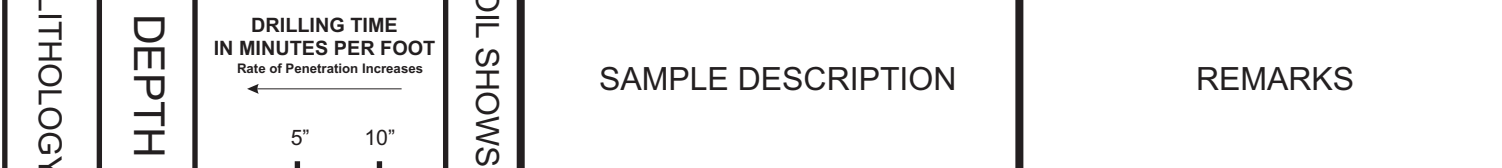
COMPANY	COBALT ENERGY, LLC	ELEVATIONS	KB 2459'
LEASE	Mollhagen Trust 'A' #1-6	DF	
FIELD	Wildcat	GL	2454'
LOCATION	2438' FSL & 422' FEL	Measurements Are All From	KB
SEC	6 TWP 8S RGE 25W	CASING	
COUNTY	Graham STATE KS	Conductor	NA
CONTRACTOR	Murfin Drilling Co., Rig #16	Surface	8 5/8" @ 218'
SPUD	08/17/19 COMP 08/24/19	Production	None
RTD	3995' LTD 3997'	Electrical Surveys	Dial Induction, Neutron-Density, Microlog
MUD UP	3400' TYPE MUD Chemical	Geological Supervision From	3585' to RTD
SAMPLES SAVED FROM	3500' to RTD	Geologist on Well	Corey N. Baker
DRILLING TIME KEPT FROM	3500' TO RTD	FORMATION TOPS	
SAMPLES EXAMINED FROM	3500' TO RTD	Anhydrite	2153 (+306)
		Base of Anhydrite	2186 (+273)
		Heebner	3701 (-1242)
		Lansing	3743 (-1284)
		Stark	3909 (-1451)
		BKC	3955 (-1496)
		RTD	3995 (-1495)
		LTD	3997 (-1538)

REMARKS The Mollhagen Trust did not run as 3D had suggested but did carry shows in multiple LKC zones. DST #3 did recover a small amount of oil but the structural position and the tight test convinced the operator to plug the well as a dry hole.

Respectfully Submitted,  
 Corey Baker  
 Vice President - Exploration  
 Cobalt Energy, LLC

API #15-065-24170-00-00

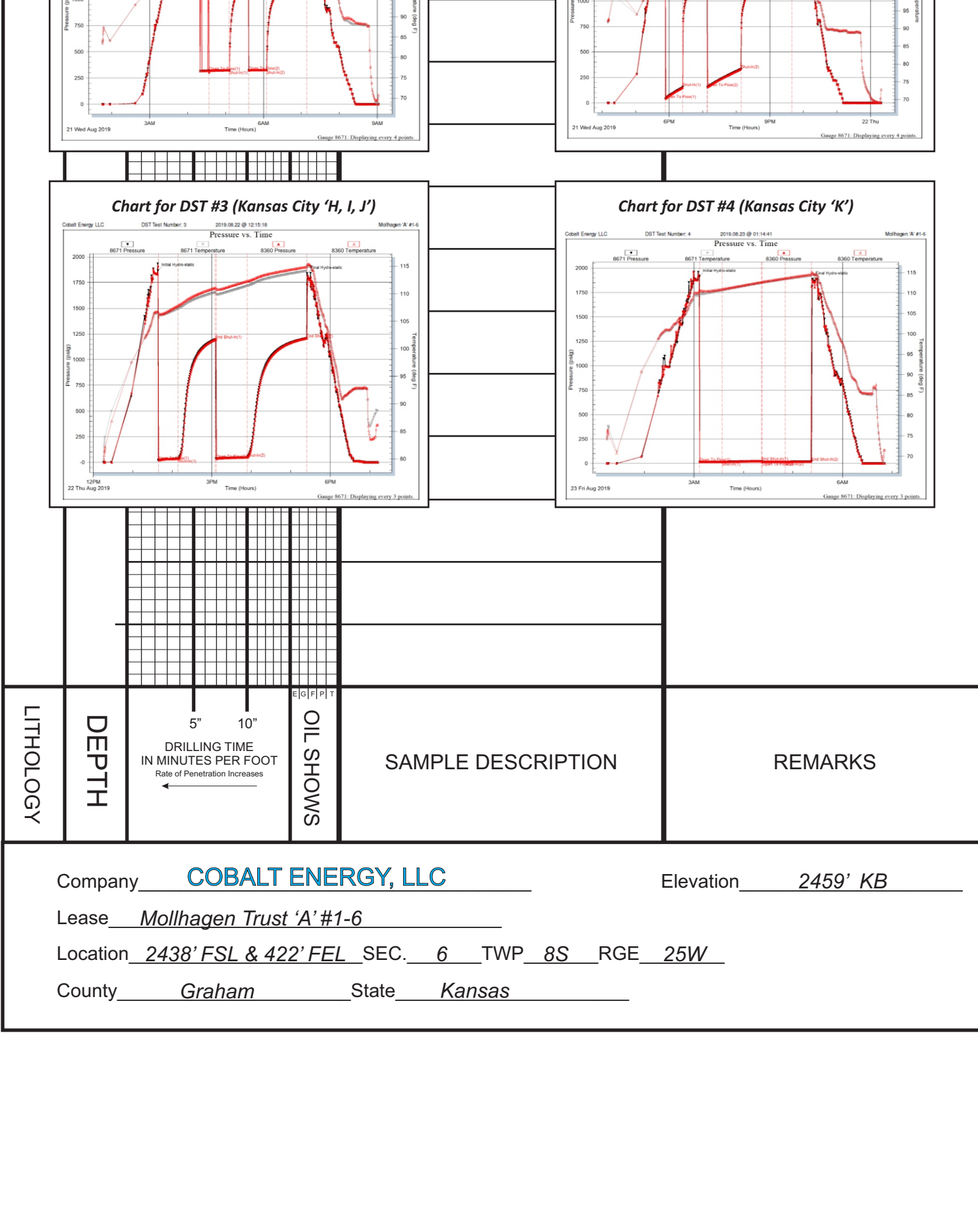
**LEGEND**



DEPTH	DRILLING TIME IN MINUTES PER FOOT	OIL SHOWS	SAMPLE DESCRIPTION	REMARKS
2100				
2153				Anhydrite 2153 (+306)
2186				Base of Anhydrite 2186 (+273)
2200				

Skip drilling time from 2200-3500', start sample descriptions @ 3500'

DEPTH	DRILLING TIME IN MINUTES PER FOOT	OIL SHOWS	SAMPLE DESCRIPTION	REMARKS
3500			LS: wht-lt gry, f xtn, foss in prt, chiky in prt, tr-pr intrxtin & pp por, ns	Bit trip @ 3499' 2 cones were loose
3550			LS: AA, w/ctny txt, abndt chrt, milky wht, shrp, ang, dns	Rig Mud Check Vis: 49 Weight: 8.7 LCM: 2#
3600			SH: vari-color, silty	8/17/19 - MIRT, RURT Spud @ 12:45PM 8/18/19 - 7:00 AM Drig @ 600' 8/19/19 - 7:00 AM Drig @ 2525' 8/20/19 - 7:00 AM Drig @ 3430' 8/21/19 - 7:00 AM TOO H w/DST #1 @ 3780' 8/22/19 - 7:00 AM CFS @ 3875' 8/23/19 - 7:00 AM TOO H w/DST #4 @ 3930' Plug & Abandon Job complete @ 11:45PM
3650			SS: silty, shly, gry, micro-grn, gils, friable in prt, well sorted, ns	Call Point 3300' 10:00PM on 8/19/19 Geologist on location 3585' 2:00PM on 8/19/19
3700			LS: wht-lt gry, vf-xtn, chiky & chrt in prt, foss, tr-pr intrxtin & pp por, ns	DST #1 (3758-80') Lansing 'C' zone Open 30" Shut-in 45" Open 30" Shut-in 60" 1st Open: Faint surface blow, died in 5". ISI: No return. 2nd Open: No blow. FSI: No return. Rec: 627' Mud IFP: 317-323# FFP: 322-324# SIP: 1160-1190# *Tool possibly opened before getting to bottom.
3750			LS: AA	Heebner 3701 (-1242) Rig mud check Vis: 54 Weight: 8.9 LCM: 2#
3800			SH: blk-gry	
3850			SH: vari-color, silty, soft	
3900			LS: wht-lt gry, vf-xtn, chrt, chiky, no vis por, ns	Lansing 3743 (-1284) Rig Mud Check Vis: 54 Weight: 8.9 LCM: 1.5# CFS @ 3780'
3950			LS: wht-lt gry, vf-xtn, chrt, chiky, foss, ool in prt, tr-pr intrprt & pp por, ns	Rig Mud Check Vis: 57 Weight: 9.0 LCM: 2#
4000			SH: blk-gry	DST #2 (3752-3820') Lansing 'C-F' zones Open 30" Shut-in 45" Open 60" Shut-in 90" 1st Open: Fair blow, built to B.O.B in 20". ISI: No return blow. 2nd Open: Fair blow, built to B.O.B in 50". FSI: No return blow. Rec: 171' Watery Mud (40% wtr, 60% mud) 189' Muddy Water (40% mud, 60% wtr) 315' Muddy Water (10% mud, 90% wtr) 675' Total Recovery IFP: 39-157# FFP: 155-331# SIP: 1214-1209#
4050			LS: wht-lt gry, vf-xtn, chrt, chiky, no vis por, ns	Rig Mud Check Vis: 7.9 Weight: 9.0 LCM: 1#
4100			SH: blk, carb	Mud-Co check Vis: 69 Weight: 9.1 LCM: 1#
4150			LS: gry-dk gry, matt, w/blk flecks, chrt, no vis por, ns	Stark 3909 (-1450) DST #3 (3840-3910') Kansas City 'H-J' zones Open 30" Shut-in 45" Open 60" Shut-in 90" 1st Open: Weak blow, built to 3". ISI: No return blow. 2nd Open: Weak blow, built to 4.5". FSI: No return blow. Rec: 5' Clean Oil 75' Oil Cut Mud (15% oil, 85% mud) 80' Total Recovery IFP: 18-33# FFP: 34-47# SIP: 1197-1207#
4200			LS: wht-gry, vf-xtn, chrt, chiky, no vis por, ns	BKC 3955 (-1496) DST #4 (3910-3930') Kansas City 'K' zones Open 30" Shut-in 45" Open 60" Shut-in 90" 1st Open: Surface blow, built to 1/4". ISI: No return blow. 2nd Open: No blow. FSI: No return blow. Rec: 2' Oil Specked Mud IFP: 14-16# FFP: 15-16# SIP: 22-18#
4250			SH: vari-color, arg	RTD 3995 (-1536) LTD 3997 (-1538)
4300			SH: vari-color, arg	
4350			SH: vari-color, arg	
4400			LS: wht-lt gry, vf-xtn, chrt, chiky in prt, no vis por, ns	
4450			LS: AA	



Company	COBALT ENERGY, LLC	Elevation	2459' KB
Lease	Mollhagen Trust 'A' #1-6		
Location	2438' FSL & 422' FEL SEC. 6 TWP 8S RGE 25W		
County	Graham State Kansas		