



Mudgrove

PETROLEUM CORPORATION
Clatlin, Kansas

GEOLOGIST'S REPORT

DRILLING TIME AND SAMPLE LOG

COMPANY <u>RJM Company</u>	ELEVATIONS
LEASE <u>Reif # 2</u>	KB <u>1887'</u>
FIELD <u>Unknown</u>	DF _____
LOCATION <u>SE-NE-NW-SW (2252' FSL & 1238' FWL)</u>	GL <u>1878'</u>
SEC <u>1</u> TWSP <u>17S</u> RGE <u>12W</u>	Measurements Are All From <u>KB</u>
COUNTY <u>Barton</u> STATE <u>Kansas</u>	
CONTRACTOR <u>Southwind Drilling co. (Rig #3)</u>	CASING
SPUD <u>09/20/2019</u> COMP <u>09/26/2019</u>	SURFACE <u>8 5/8"@ 350'</u>
RTD <u>3353'</u> LTD <u>3355'</u>	PRODUCTION <u>5 1/2"@3323'</u>
MUD UP <u>2600'</u> TYPE MUD <u>Chemical</u>	ELECTRICAL SURVEYS
	Pioneer Wireline: DIL, MEL, DUCP

SAMPLES SAVED FROM 2700' TO RTD

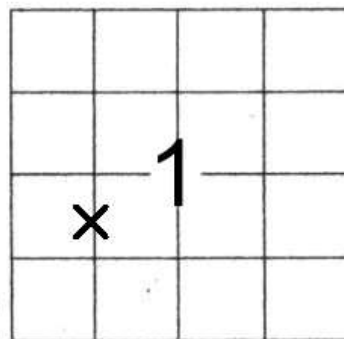
DRILLING TIME KEPT FROM 2700' TO RTD

SAMPLES EXAMINED FROM 2700' TO RTD

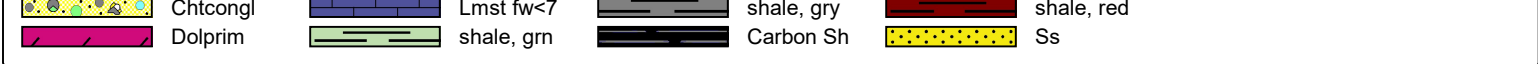
GEOLOGICAL SUPERVISION FROM 2736' TO RTD

GEOLOGIST ON WELL Wyatt Urban

FORMATION TOPS	LOG		SAMPLES	
Anhydrite	748	+1139	748	+1139
Heebner	2966	-1079	2968	-1081
Toronto	2978	-1091	2977	-1090
Brown Lime	3059	-1172	3059	-1172
Lansing	3078	-1191	3080	-1193
Muncie Creek	3208	-1321	3204	-1317
BKC	3320	-1433	3320	-1433
Arbuckle	3331	-1444	3331	-1444
RTD	3353	-1466	3353	-1466
LTD	3355	-1468	3355	-1468



ROCK TYPES



OTHER SYMBOLS

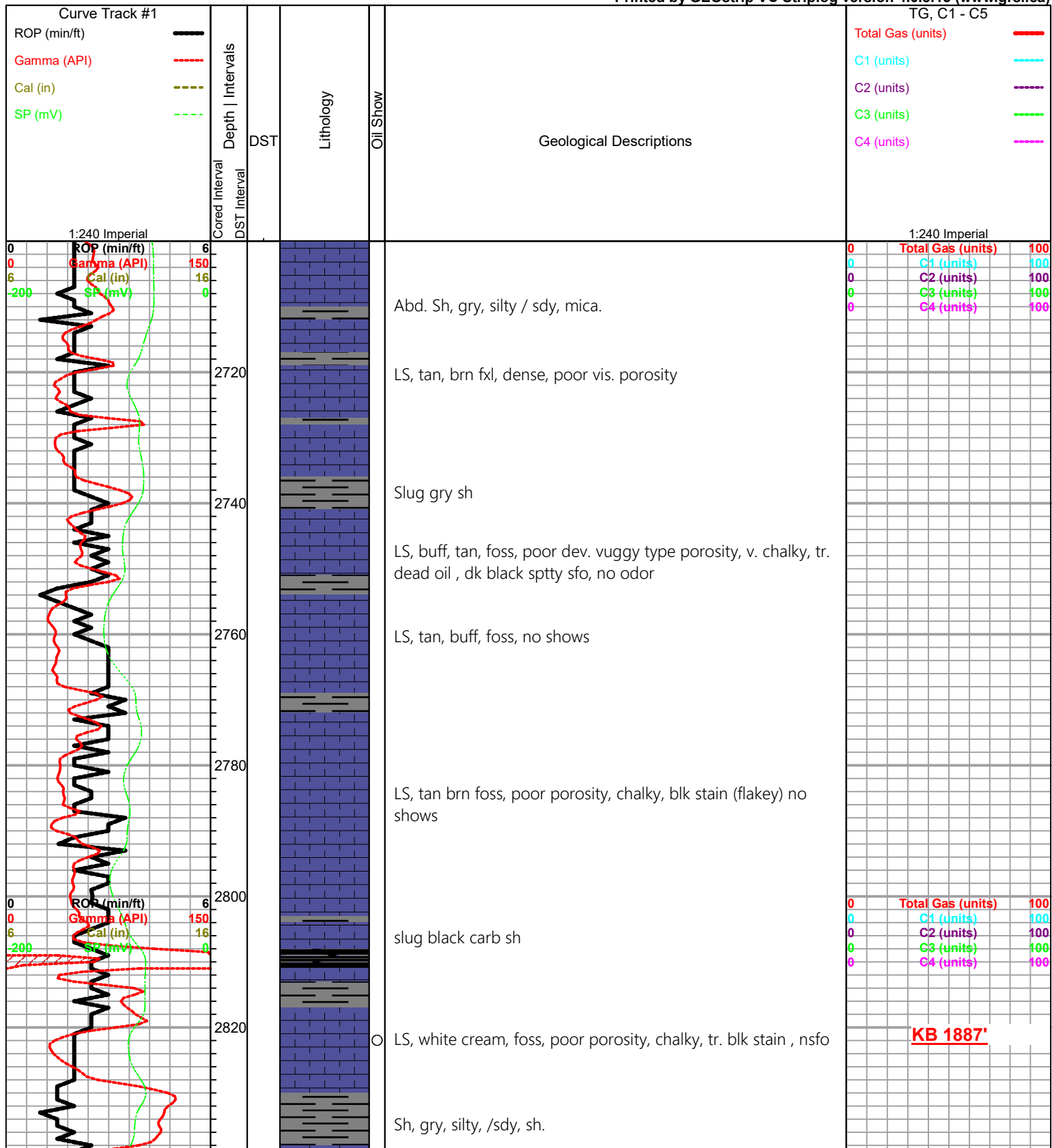
Oil Show

- Good Show
- Fair Show
- Poor Show
- Spotted or Trace
- Questionable Stn
- D Dead Oil Stn
- Fluorescence
- * Gas

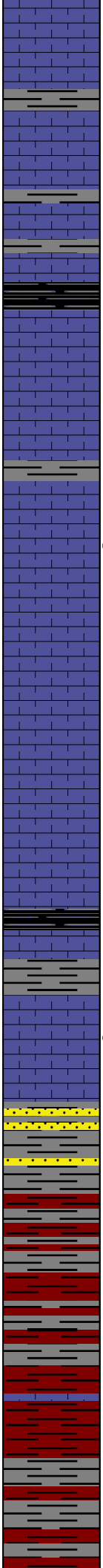
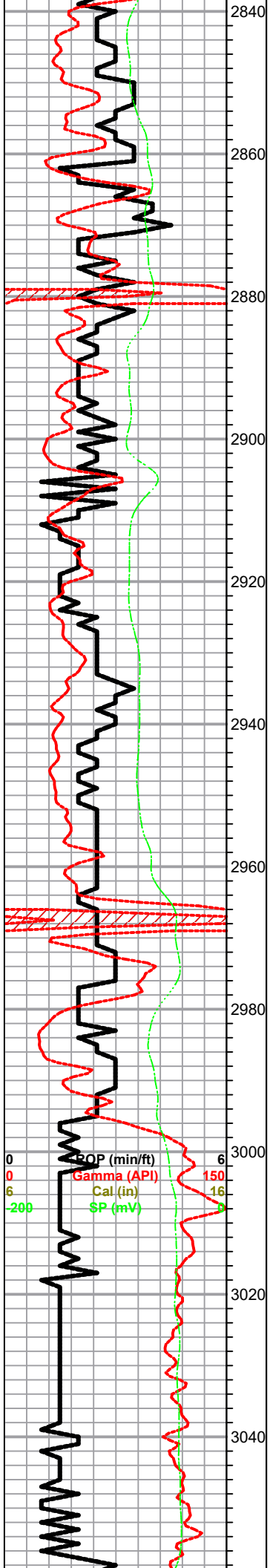
DST

- DST Int
- DST alt
- Core
- tail pipe

Printed by GEOstrip VC Striplog version 4.0.8.15 (www.grsi.ca)



KB 188'



LS, white, cream, foss, poor vis. porosity, chalky, no shows

**BIT TRIP @
2871'**

Sh, black carb

LS, tan, gry, dense, poor vis. porosity, sl. chalky, no shows

Sh, gry, silty

○ LS, ool, / foss, poorly developed vuggy por., sparry calcite cement, sl. chalky, tr. lt. black stain, nsfo

LS, white, dol, good inxln porosity, no shows

Tr. LS, tan, ool, poor porosity, no shows

LS, tan, buff, poor vis. porosity, chalky, few foss, no shows

HEEBNER 2966.0 -1079.0

Sh, black carb

TORONTO 2977.0 -1090.0

● LS, tan, cream, white, foss/ ool, poor inxln porosity, chalky tr. spty stain, spty sfo, tr. brn stain, odor???

DOUGLAS 2992.0 -1105.0

Sh, gry, green, maroon, tr. sd. clr, med grain, poorly sorted, tr. v. wk spty brn stain, nsfo, no odor

Sh, gry, maroon, silty, soft

Sh, gry, maroon, tr. sd., f. grain well sorted, nsfo, no odor

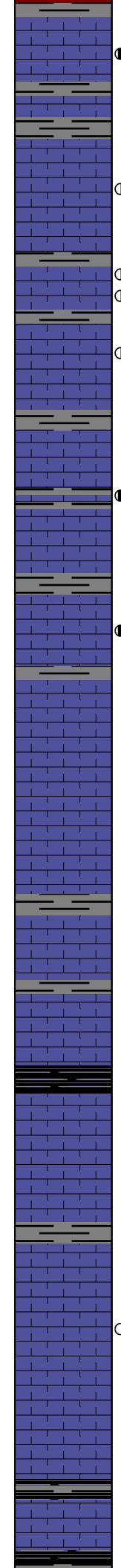
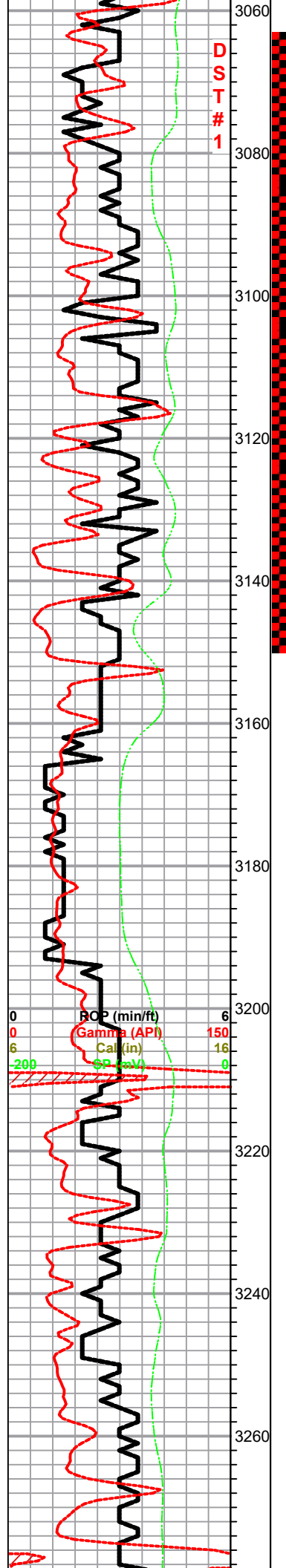
Sh, maroon, a/a no shows,

0	Total Gas (units)	100
0	C1 (units)	100
0	C2 (units)	100
0	C3 (units)	100
0	C4 (units)	100

DST#1 3063-3150
30-45-45-60

BROWN LIME 3050.0 -1173.0

BROWN LIME 3059.0 -1172.0



LS, tan white, cream, sdy, frosted, poor scattered porosity, tr. stain , ??? Tr. LS, white, sparry calc. cement (frosted) gran., poorly developed vuggy type por. lt. blk stain, wk spty sfo, no odor. ?? Sh, gry, silty

LANSING 3078.0 -1190.0

LS, white, fxl, v. chalky, fair inxln porosity, tr. brn stain , tr. sfo, faint odor

LS, tan, dolomitic good inxln porosity, tr. brn stain , lt. sfo odor

LS, tan, dol./ suc. f-med xln, good inxln porosity, scattered vuggy porosity, brn stain , sfo , odor

LS, cream, white, fxl, dense, poor vis. porosity, nsfo, odor

Sh, gry, silty, soft

LS, tan, dol. / suc. f- med xln, scattered vuggy porosity, stain, sfo, odor

LS, whtie, tan, foss, poorly developed ool, fair inxln porosity, brn stain , sfo, odor

LS, tan, buff, oom, good vuggy oom, porosity, barren .

LS, white, foss, fair vuggy type porosity, nsfo, barren

LS, white, dense , poor vis. porosity, cherty no shows

Sh, black carb

LS, tan, white, foss, poor vuggy--->p.p. type porosity, dense, chalky in pts, no shows.

tr. gry sh .

LS, white, tan, dol. good inxln porosity, poor p.p. por. tr. brn stain , spty sfo, faint odor

LS, white, gry, foss, poor p.p. type porosity, few cherty, nsfo, ??? odor

Tr. black carb Sh

1ST open:
BOB 45 sec.

GTS 5 ms

2nd Open:
BOB 1 MINS.

Recovery:
2520' GIP

510' SLWCGCO
(20%G, 65 %O, 5%W, 10%M)

120' SLWCGCMCO
(20%G, 50%O, 5%W, 25%M)

Pressures:
ISIP 639 psi
FSIP 635 psi
IFP 84-148 psi
FFP 146-255 psi
HSH 1462 - 1461 psi

0	Total Gas (units)	100
0	C1 (units)	100
0	C2 (units)	100
0	C3 (units)	100
0	C4 (units)	100

DST#2 3294-3346
30-30-45-45

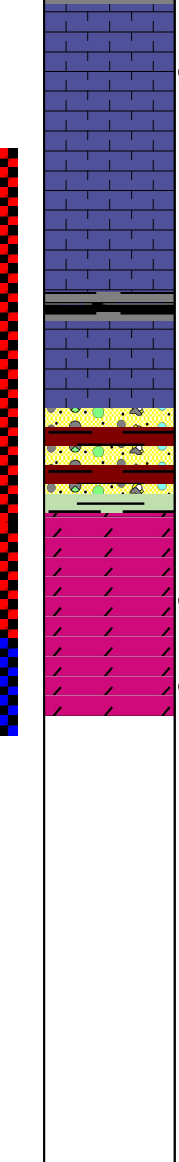
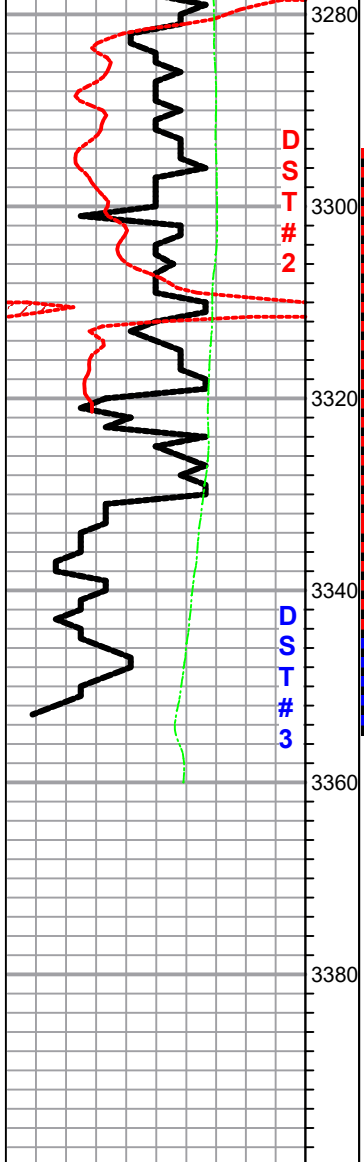
1st Open:
weak build .5"

2nd Open:
no blow
(flushed tool no help)

Recovery:
5 ' clean oil

25' SLWCHOCM
(45%O, 5%W, 50%M)

Pressures:
ISIP 804 psi
FSIP 733 psi
IFP 14-18 psi
FFP 22-25 psi
HSH 1412 - 1401



○ LS, white, ool, poorly developed p.p. --> vuggy type por. tr. blk stain , nsfo, no odor

LS, white, a/a, dense, poor vis porosity, no shows

Base KC 3320.0 -1433.0

Sh, dk gry, black carb

Sh, maroon, gry, tr tan, white, chert, tr. LS, tan, buff few ool, poor porosity, nsfo, Ahd aaua green sh

Arbuckle 3331.0 -1444.0

Dol. tan, buff, fxl, dense, poor inxln porosity, no show, no odor

○ Dol. tan, buff, suc. good inxln vuggy, dk brn stain , sfo dk brn fair odor in broken samples

○ Dol. tan, buff, suc. good inxln porosity, dark brn sptty sfo, faint odor in samples

RTD 3353.0 -1466.0

DST#3 3294-3346

30-30-45-45

1st Open:
BOB 12 mins.

2nd Open:
BOB 25 mins.

Recovery:
180' OCHWCM
(25%O, 30%W, 45%M)

240' SLOCMCW
(10%o, 70%W, 20%M)

Pressures:
ISIP 1061 psi
FSIP 1071 psi
IFP 21-118 psi
FFP121-229 psi
HSH 21-118 psi