

GEOLOGIC REPORT

DAVID J. GOLDAK

WICHITA, KANSAS
Scale 1:240 (5"=100') Imperial
Measured Depth Log

Well Name: Eaton #1-2
API: 15-171-21255-0000
Location: Section 2 - T19S - R32W
License Number: _____
Spud Date: 07 / 08 / 2019
Surface Coordinates: 985' FSL and 2295' FWL
SW - NE - SE - SW
Bottom Hole Coordinates: _____
Ground Elevation (ft): 2967' K.B. Elevation (ft): 2980'
Logged Interval (ft): 3700' To: 4723' Total Depth (ft): 4723'
Formation: Mississippian - St Louis
Type of Drilling Fluid: Chemical - Mud-Co

Region: Scott Co., KS
Drilling Completed: 07 / 15 / 2019

Printed by MudLog from WellSight Systems 1-800-447-1534 www.WellSight.com

OPERATOR

Company: Stelbar Oil Corporation
Address: 1625 N. Waterfront Pkwy., Suite 200
Wichita, Kansas 67206-6602

GEOLOGIST

Name: David J. Goldak
Company: D. J. GOLDAK, INC.
Address: 12427 W Ridgepoint Cir
Wichita, Kansas 67235

General Info

CONTRACTOR: Sterling Drilling, Rig #5

BIT RECORD:

No.	Size	Make	Jets	Out	Feet	Hours
1	12-1/4	JZ-HAOTC	4-16s	318'	318'	2.25
2	7-7/8	Taurex-TXT516	5-15s	4723'	4405'	73.50

SURVEYS: 318'-0.50, 4209'-0.50, 4723'-1.00

GENERAL DRILLING & PUMP INFORMATION:

Collars: 18 joints (6.25"x2.25"): 530.86'
Drilling: 14,000-16,000 lbs on bit and 90-100 RPM.
Pumping: 65 S/M; 9.6 B/M; 800-900 psi

Daily Status

07/08/19 - Spud at 1:30 PM; Set 8-5/8" csg @ 313'
 07/09/19 - 318' WOC; DP @ 11:00 AM
 07/10/19 - 2,020' Drilling
 07/11/19 - 3,441' Drilling; Displace @ 3,473'
 07/12/19 - 4,195' Drilling; DST #1 @ 4,209'
 07/13/19 - 4,310' Drilling; DST #2 @ 4,386'
 07/14/19 - 4,450' Drilling; RTD @ 4,723'; Log well
 07/15/19 - 4,723' WOO

	Log Tops	Sample Tops
--	----------	-------------

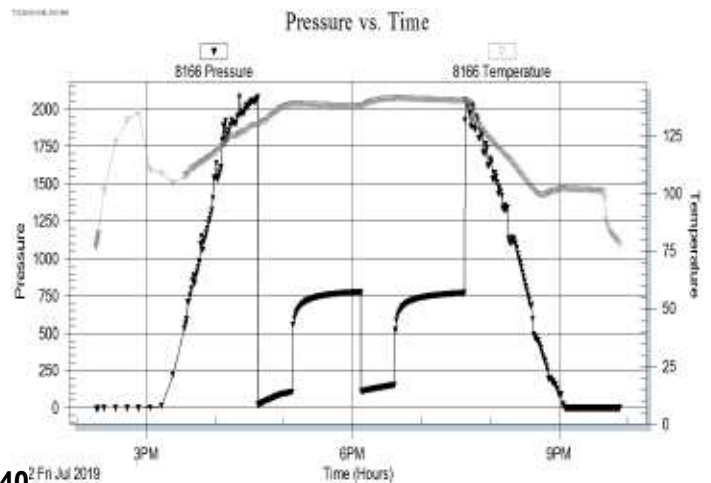
Anhydrite	2250 (+730)	2252 (+728)
Base / Anhydrite	2310 (+670)	2314 (+666)
Lecompton	3804 (-824)	3808 (-828)
Oread	3855 (-875)	3859 (-879)
Heebner	3918 (-938)	3920 (-940)
Lansing	3960 (-980)	3963 (-983)
Muncie Creek	4142 (-1162)	4147 (-1167)
Stark Sh	4246 (-1266)	4254 (-1274)
Hushpuckney Sh	4288 (-1308)	4292 (-1312)
Base of KC	4343 (-1363)	4348 (-1368)
Marmaton	4366 (-1386)	4366 (-1386)
Pawnee	4464 (-1484)	4468 (-1488)
Cherokee Sh	4506 (-1526)	4510 (-1530)
Lower Cher Sh	4533 (-1553)	4537 (-1557)
Johnson Zone	4567 (-1587)	4570 (-1590)
Morrow Sh	4614 (-1634)	4619 (-1639)
Mississippian	4620 (-1640)	4623 (-1643)
Total Depth	4717 (-1737)	4723 (-1743)

DST #1: 4,192' - 4,209' (LKC "I")
 30" - 60" - 30" - 60"

IF: Blow building to 9.5 inches
ISI: No return blow
FF: Blow building to 7 inches
FSl: No return blow

RECOVERY: 320' Total Fluid, consisting of:
 131' MW w/ 1" oil on top (50% W, 50% M)
 189' MCW (90% W, 10% M); Chlorides: 25,000 ppm
 Sampler: 2000 ml Water @ 50 psi

SIP: 776-769; FP: 20-105, 110-153; HP: 2079-2058; BHT: 140



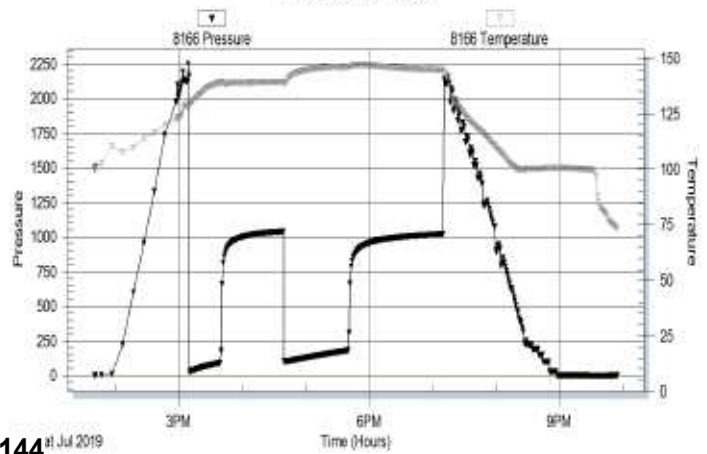
DST #2: 4,363' - 4,386' (Marmaton "B")
 30" - 60" - 60" - 90"

IF: Blow building to BOB in 10.5 minutes
 ISI: Return blow building to 4 inches
 FF: Blow building to BOB in 11 minutes
 FSI: Return blow building to 8 inches

RECOVERY: 741' GIP & 456' Total Fluid, consisting of:
 330' GCO (30% G, 70% O); Gravity: 29 API
 126' GOCM (40% G, 10% O, 50% M)
 Sampler: 3 cu ft Gas & 1500 ml Oil @ 75 psi

SIP: 1037-1018; FP: 24-91, 103-184; HP: 2246-2142; BHT: 144

Pressure vs. Time



ROCK TYPES

	Anhy		Gyp		Shgy		Sandylms
	Bent		Igne		Sltst		Shale
	Brec		Lmst		Ss		Sltstn
	Cht		Meta		Till		Shlyslts
	Clyst		Mrlst		Carb sh		Sltysht
	Coal		Salt		Dol		Lms
	Congl		Shale		Dtd		
	Dol		Shcol		Gry sh		

ACCESSORIES

MINERAL		Salt		Fossil		Clystn
	Anhy		Sandy		Gastro	Dol
	Arggrn		Silt		Oolite	Grysh
	Arg		Sil		Ostra	Gryslt
	Bent		Sulphur		Pelec	Lms
	Bit		Tuff		Pellet	Sandylms
	Brecfrag		Chlorite		Pisolite	Sh
	Calc		Dol		Plant	Sltstn
	Carb		Sand		Strom	
	Chtdk		Silty		Fuss	
	Chtlt	FOSSIL			Oomold	
	Dol		Algae	STRINGER		
	Feldspar		Amph		Anhy	
	Ferrpel		Belm		Arg	
	Ferr		Bioclst		Bent	
	Glau		Brach		Coal	
	Gyp		Bryozoa		Dol	
	Hvmin		Cephal		Ls	
	Kaol		Coral		Mrst	
	Marl		Crin		Sltstrg	
	Minxl		Echin		Ssstrg	
	Nodule		Fish		Carbsh	
	Phos		Foram			
	Pyr					

TEXTURE

	Boundst
	Chalky
	Cryxln
	Earthy
	Finexln
	Grainst
	Lithogr
	Microxln
	Mudst
	Packst
	Wackest

OTHER SYMBOLS

POROSITY TYPE

- E Earthy
- F Fenest
- F Fracture
- X Inter
- M Moldic
- O Organic
- P Pinpoint
- V Vuggy

SORTING

- W Well
- M Moderate
- P Poor

ROUNDING

- R Rounded
- F Subrnd
- a Subang
- A Angular

OIL SHOWS

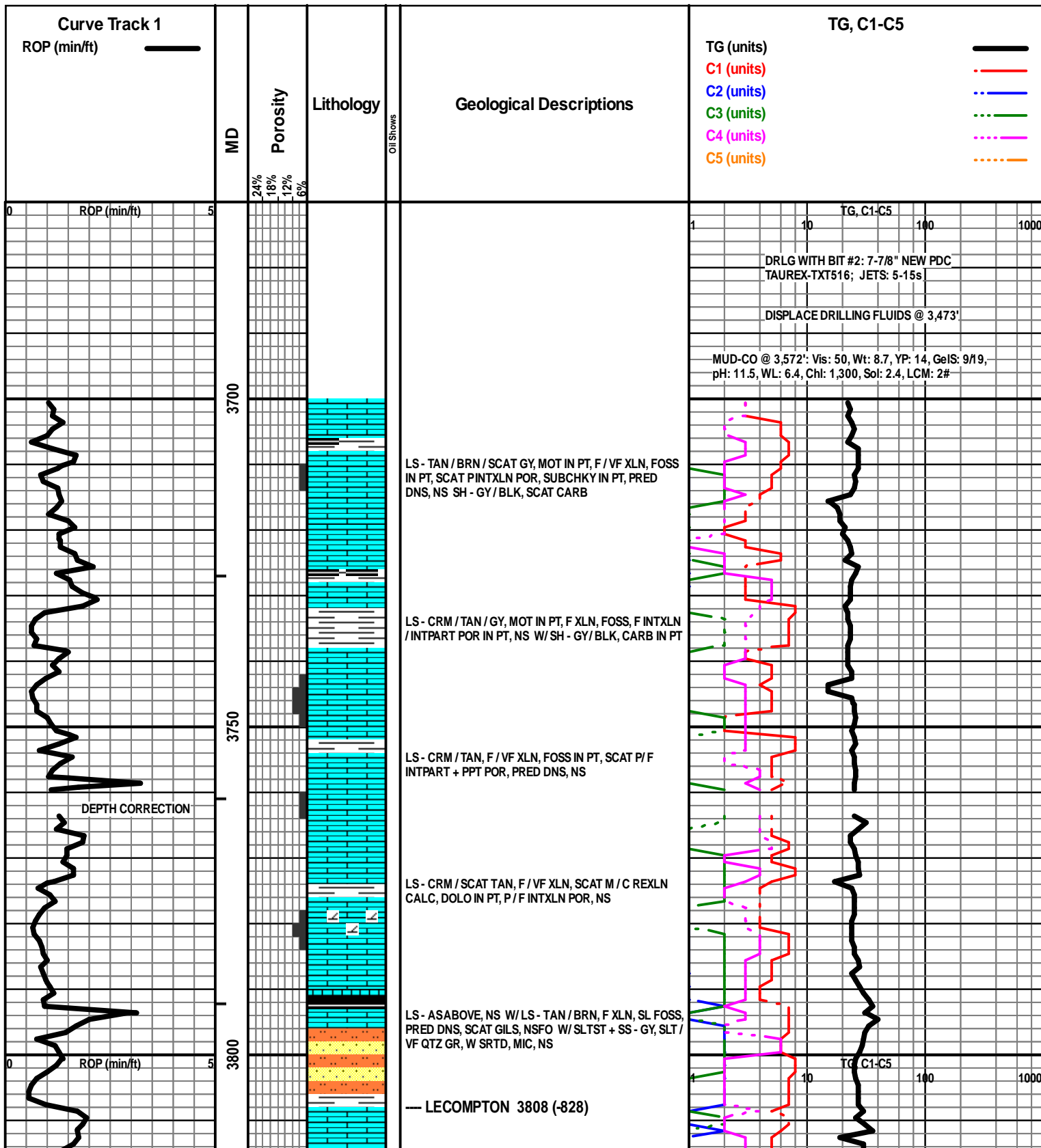
- Even
- ◉ Spotted
- ◌ Ques
- ◻ Dead
- ⊠ Gas show

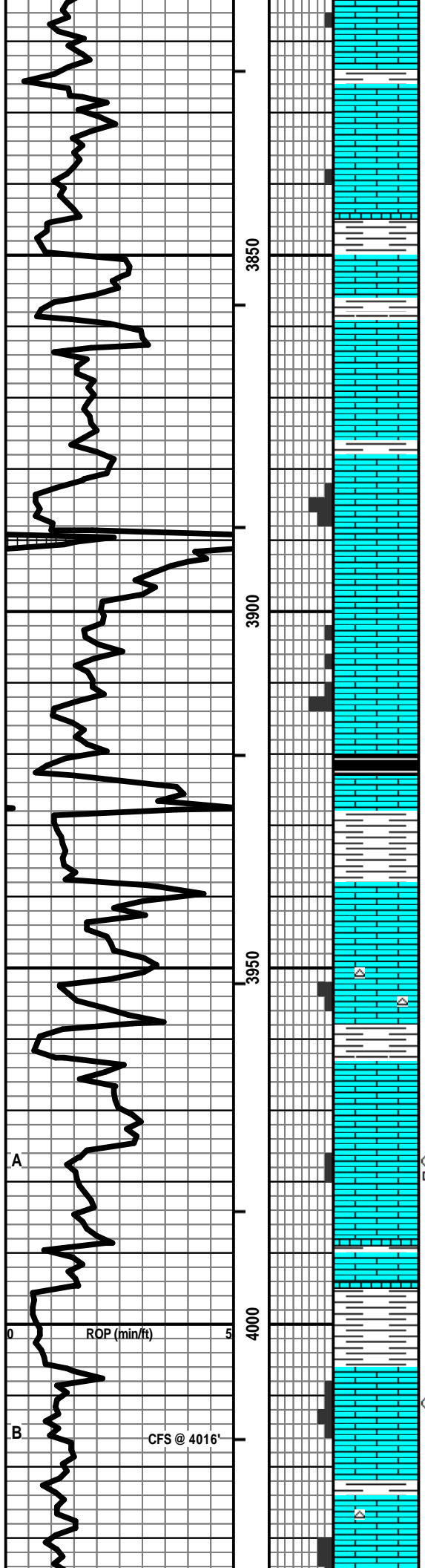
INTERVALS

- Core
- ◻ Dst

- Dst_1_t
- Dst_1_b
- Dst

- #### EVENTS
- ▽ Rft
 - ▶ Sidewall
 - ▬ Conn





LS - CRM / TAN / GY, MOT IN PT, F / VF XLN, FOSS IN PT, SCAT CHKY, TR PINTXLN + FOSS MOLD POR, PRED DNS, SCAY GILS, NSFO

LS - CRM / TAN, VF / F XLN, SL FOSS, SCAT PINTXLN POR, SUBCHKY IN PT, PRED DNS, TR GILS, NSFO

LS - TAN / GY, MOT IN PT, VF XLN, PRED DNS, NS

— OREAD 3859 (-879)

LS - CRM / TAN, F / VF XLN, FOSS IN PT, SUBCHKY IN PT, PRED DNS, NS

LS - CRM / TAN, F / VF XLN, FOSS + OOL IN PT, F INTXLN / INTPART POR, SCAT PPT POR, CHKY IN PT, TR GILS, NSFO W/LS - TAN / BRN, F / VF XLN, OOL IN PT, PRED DNS, NS

LS - CRM / TAN, VF / F XLN, FOSS IN PT, SCAT OOL, P INTXLN POR IN PT, CHKY IN PT, SCAT GILS, NSFO

LS - ASABOVE, P / G INTXLN POR, SCAT VUG POR, SCAT GILS, NSFO

— HEEBNER 3920 (-940)

SH - BLK / GY, CARB IN PT W/LS - TAN / BRN, MOT IN PT, F XLN, SL FOSS, DNS, NS

SH - GY W/LS - CRM / GY / TAN, MOT IN PT, F / VF XLN, SL FOSS, SCAT OOL, PRED DNS, NS

LS - CRM / WHT / TAN, F / VF XLN, SCAT REXLN CALC, FOSS + OOL IN PT, SCAT P / F INTXLN POR, SCAT CHKY, NS W/SCAT CHT - WHT / LT GY

— LANSING 3963 (-983)

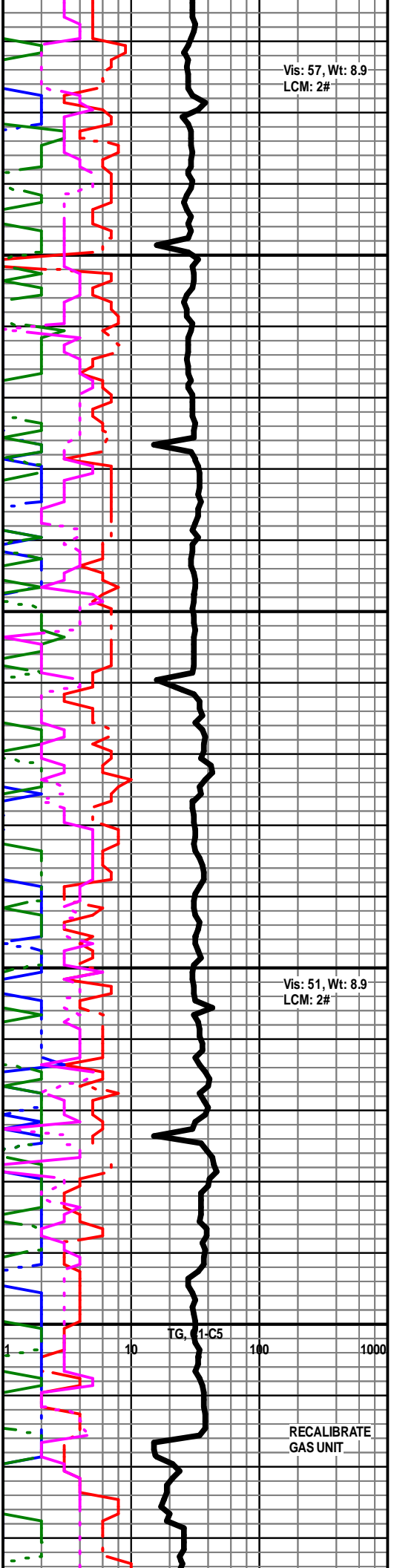
LS - TAN / CRM / BRN, F / VF XLN, FOSS IN PT, PRED DNS, NS

LS - CRM / WHT / TAN, F / VF XLN, FOSS IN PT, SCAT P INTXLN + PPT POR, SUBCHKY IN PT, TR FO + ASPH + GILS, NO ODOR, TR SPTY BLK DEAD STN

SH - GY / BLK W/LS - CRM / TAN / GY, PRED F XLN, SCAT REXLN CALC, FOSS + OOL IN PT, SCAT P / F INTXLN + FOSSMOLD POR, TR GB, NSO, NO ODOR

LS - ASABOVE, PRED DNS, NS W/LS - CRM / TAN, F / VF XLN, FOSS IN PT, PRED DNS, NS W/SCAT CHT - GY / WHT

LS - CRM / WHT / TAN, PRED F / VF XLN, SCAT M XLN,



Vis: 57, Wt: 8.9
LCM: 2#

Vis: 51, Wt: 8.9
LCM: 2#

TG, 1-C5 100 1000

RECALIBRATE
GAS UNIT

FOSS + OOL IN PT, P / F INTXLN + VUG POR IN PT, CHKY IN PT TO DNS, NS W/ SCAT CHT - GY / WHT

LS - ASABOVE, PRED DNS, NS W/ SCAT CHT - GY / WHT

LS - CRM / TAN, F / VF XLN, OOL IN PT, SCAT P INTXLN POR, SUBCHKY IN PT, PRED DNS, NS

LS - CRM / TAN / SCAT GY, F / VF XLN, OOL IN PT, CHKY IN PT, PRED DNS, NS

LS - CRM / TAN / BRN, F XLN, OOL, G OOM POR, F / G INTXLN POR, NS

LS - CRM / TAN / GY, VF / F XLN, TR OOL, PRED DNS, NS

LS - ASABOVE, OOM + INTXLN POR IN PT, SCAT CHKY / DNS IN PT, NS

LS - CRM / TAN / GY, AS ABOVE, INTXLN + OOM POR IN PT, SCAT CHKY, NS

— MUNCIE CREEK 4147 (-1167)

LS - TAN / BRN, MOT IN PT, F XLN, SCAT OOL, PRED DNS, NS W/ LS - CRM / TAN / WHT, F / VF XLN, SL FOSS, MOD CHKY, PRED DNS, NS W/ CHT - WHT / LT GY

LS - CRM / TAN / SCAT BRN, MOT IN PT, F / VF XLN, SL FOSS, SCAT OOL, SCAT P INTXLN POR, SUBCHKY IN PT / DNS, NS W/ CHT - AA

SH - BLK / GY, CARB IN PT W/ LS - TAN, F XLN, SCAT OOL, PRED DNS, NS

LS - CRM / TAN, F XLN, OOL IN PT, SL FOSS, F / G INTXLN / INTPART POR, SCAT P / G OOM POR, TR GB, NSO, NO ODOR, NO STN

LS - TAN / CRM / BRN, MOT IN PT, F / VF XLN, OOL IN PT, SUBCHKY IN PT, PRED DNS, NS

LS - GY / CRM / TAN, MOT IN PT, PRED F XLN, OOL, P / G OOM POR, SCAT INTXLN POR, NS

LS - CRM / WHT / SCAT TAN, MOT IN PT, PRED VF / F XLN, SCAT REXLN CALC, SCAT OOL, SCAT P INTXLN POR, SCAT VSSFO, F ODOR, TR SPTY STN, P / G FLUOR, NO / G CUT

— STARK SHALE 4254 (-1274)

Vis: 51, Wt: 9.1
LCM: 2#

WORK ON GAS
EXTRACTOR

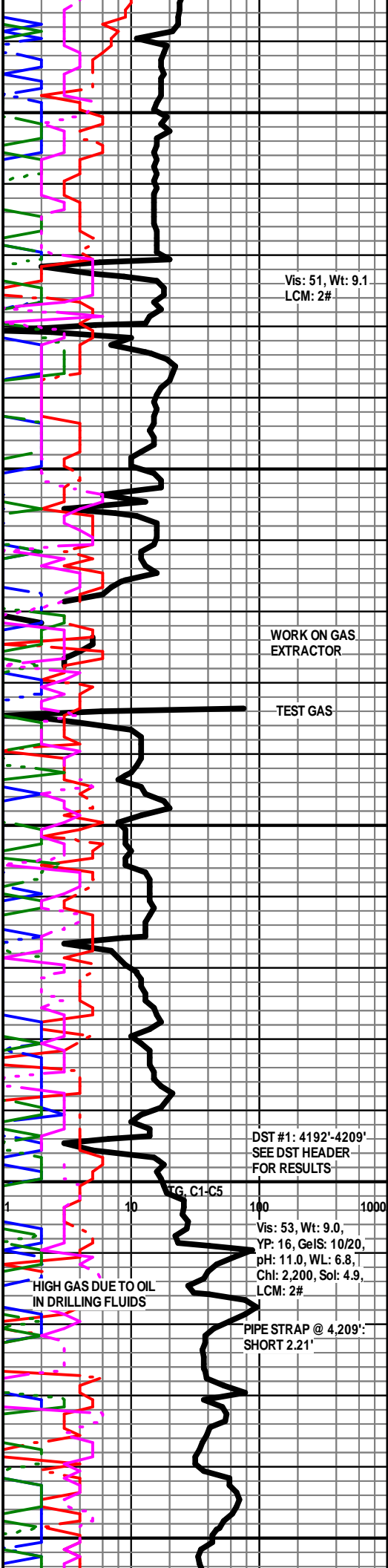
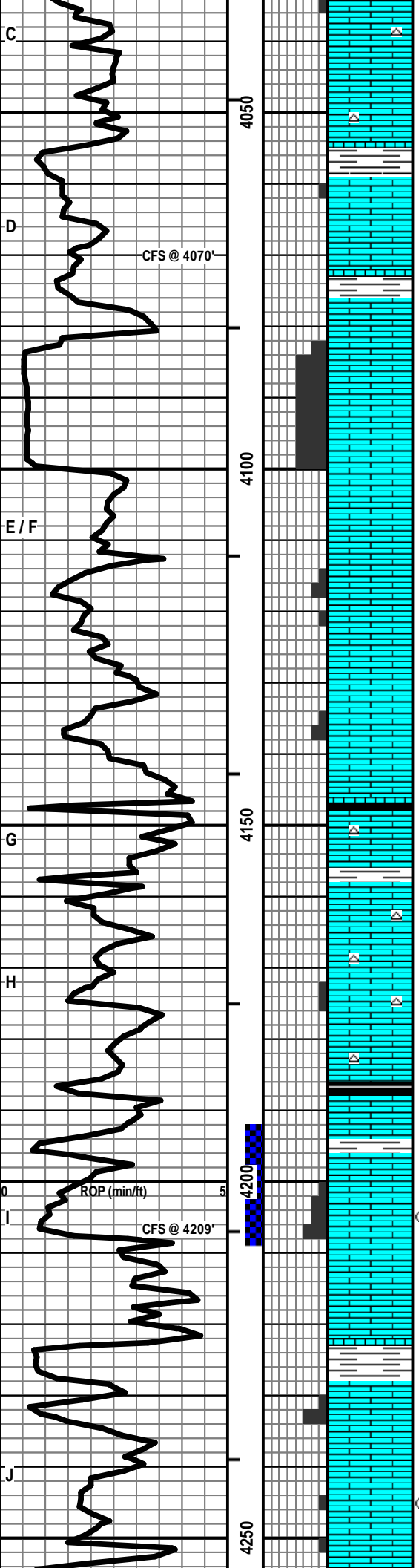
TEST GAS

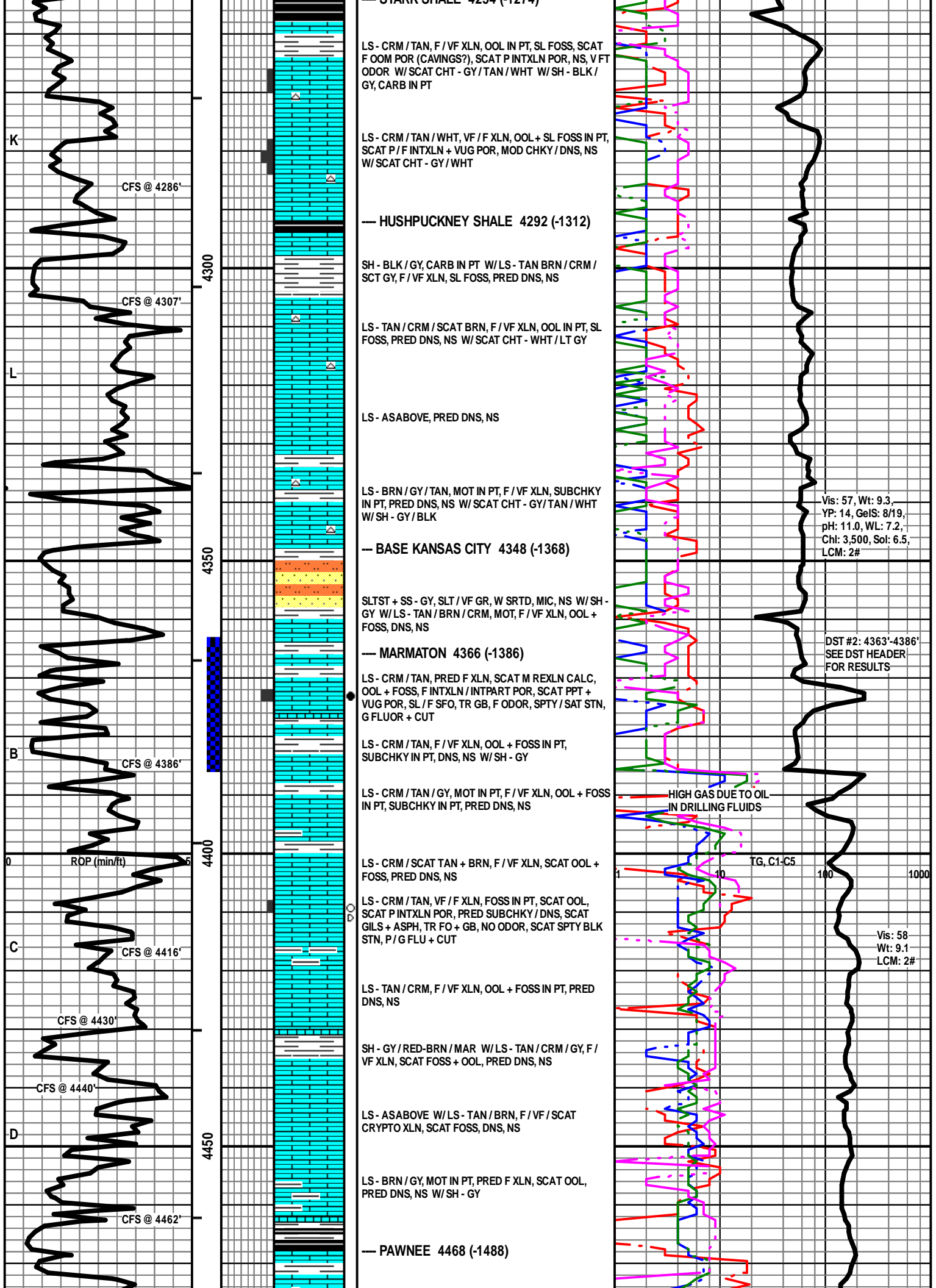
DST #1: 4192'-4209'
SEE DST HEADER
FOR RESULTS

Vis: 53, Wt: 9.0,
YP: 16, GeIS: 10/20,
pH: 11.0, WL: 6.8,
Ch: 2,200, Sol: 4.9,
LCM: 2#

HIGH GAS DUE TO OIL
IN DRILLING FLUIDS

PIPE STRAP @ 4,209':
SHORT 2.21'





LS - BRN / TAN, MOT IN PT, F / SCAT M XLN, SL FOSS, PRED DNS, NS W/ SCAT CHT - LT GY / WHT

LS - ASABOVE, PRED DNS, NS W/ SCAT CHT - LT GY / WHT W/ SH - GY

SH - BLK / GY, CARB IN PT W/ LS - TAN / CRM / GY, F / VF XLN, FOSS + OOL IN PT, PRED DNS, NS

--- CHEROKEE SHALE 4510 (-1530)

LS - TAN / CRM, F XLN, OOL, SL FOSS, SCAT PINTXLN + PPT POR, PRED DNS, SCAT GILS, TR GB, NSFO, NO ODOR, SCAT SPTY BLK STN, NO / F FLUOR, NO / P CUT W/ SCAT CHT - LT GY W/ SH - BLK / GY, CARB IN PT

--- LOWER CHEROKEE 4537 (-1557)

LS - CRM / TAN / GY, MOT IN PT, F / VF XLN, OOL + FOSS IN PT, SUBCHKY IN PT, PRED DNS, NS W/ SH - BLK / GY, CARB IN PT

LS - TAN / BRN / GY, MOT IN PT, F / VF XLN, AREN IN PT, PRED DNS, NS W/ SS - GY, VF / F GR, W SRTD, SA / SR, V CALC, MOD MIC, SL PYR, P / NO INTGR POR, VSSGB, NSO, NO ODOR

--- JOHNSON ZONE 4570 (-1590)

LS - TAN / CRM, F / VF XLN, SCAT OOL, SCAT PINTXLN + PPT POR, SL S GILS + OILY FILM + GB, NSFO, V FT ODOR, SCAT SPTY BLK STN, F / G FLUOR, P / G CUT

LS - TAN / GY / BRN, MOT IN PT, F / VF XLN, SCAT OOL + FOSS, TR P INTXLN POR, PRED DNS, SUBCHKY IN PT, TR FO, SSSB, NO ODOR, TR SPTY STN, P / F FLUOR, P / G CUT

LS - TAN / GY / BRN, MOT IN PT, F / VF XLN, SCAT OOL + FOSS, SUBCHKY IN PT, PRED DNS, NS W/ SH - GY / GRN W/ SS - LT GY / GRN, SLT / VF GR, W SRTD, P / NO INTGR POR, NS

--- MISSISSIPPIAN 4623 (-1643)

LS - WHT / CRM, VF XLN, AREN, SCAT OOL, CHKY / DNS, NS W/ SCAT CHT - GY

LS - WHT / CRM, VF XLN, AREN, FNLY OOL, CHKY / DNS, NS W/ LS - CRM / TAN, F / VF XLN, OOL IN PT, PRED DNS, NS W/ TR CHT - GY / ORG

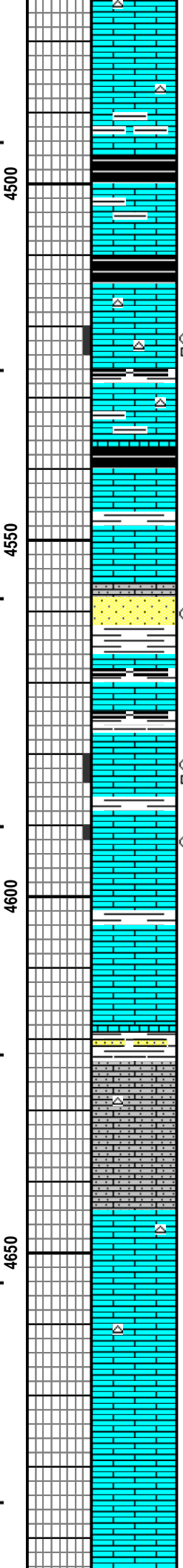
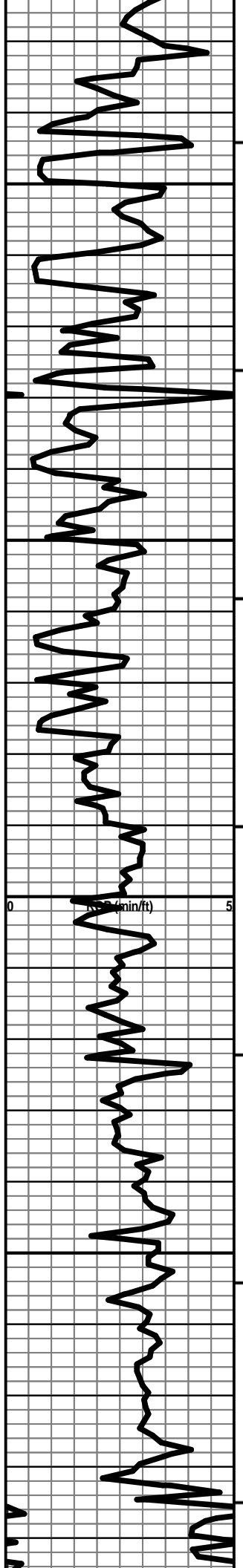
LS - CRM / TAN, F / VF XLN, OOL IN PT, PRED DNS, NS W/ TR CHT - GY / WHT / ORG

LS - TAN / CRM, F / VF XLN, SCAT CRYPTO XLN, OOL IN PT, PRED DNS, NS

Vis: 77
Wt: 9.1
YP: 19
GeIS: 13/42
pH: 11.0
WL: 8.0
Chl: 3,000
Sol: 5.3
LCM: 2#

TG, C1-C5

Vis: 58
Wt: 9.1
LCM: 2#



LS - BRN / TAN, MOT IN PT, F / SCAT M XLN, SL FOSS, PRED DNS, NS W/ SCAT CHT - LT GY / WHT

LS - ASABOVE, PRED DNS, NS W/ SCAT CHT - LT GY / WHT W/ SH - GY

SH - BLK / GY, CARB IN PT W/ LS - TAN / CRM / GY, F / VF XLN, FOSS + OOL IN PT, PRED DNS, NS

--- CHEROKEE SHALE 4510 (-1530)

LS - TAN / CRM, F XLN, OOL, SL FOSS, SCAT PINTXLN + PPT POR, PRED DNS, SCAT GILS, TR GB, NSFO, NO ODOR, SCAT SPTY BLK STN, NO / F FLUOR, NO / P CUT W/ SCAT CHT - LT GY W/ SH - BLK / GY, CARB IN PT

--- LOWER CHEROKEE 4537 (-1557)

LS - CRM / TAN / GY, MOT IN PT, F / VF XLN, OOL + FOSS IN PT, SUBCHKY IN PT, PRED DNS, NS W/ SH - BLK / GY, CARB IN PT

LS - TAN / BRN / GY, MOT IN PT, F / VF XLN, AREN IN PT, PRED DNS, NS W/ SS - GY, VF / F GR, W SRTD, SA / SR, V CALC, MOD MIC, SL PYR, P / NO INTGR POR, VSSGB, NSO, NO ODOR

--- JOHNSON ZONE 4570 (-1590)

LS - TAN / CRM, F / VF XLN, SCAT OOL, SCAT PINTXLN + PPT POR, SL S GILS + OILY FILM + GB, NSFO, V FT ODOR, SCAT SPTY BLK STN, F / G FLUOR, P / G CUT

LS - TAN / GY / BRN, MOT IN PT, F / VF XLN, SCAT OOL + FOSS, TR P INTXLN POR, PRED DNS, SUBCHKY IN PT, TR FO, SSSB, NO ODOR, TR SPTY STN, P / F FLUOR, P / G CUT

LS - TAN / GY / BRN, MOT IN PT, F / VF XLN, SCAT OOL + FOSS, SUBCHKY IN PT, PRED DNS, NS W/ SH - GY / GRN W/ SS - LT GY / GRN, SLT / VF GR, W SRTD, P / NO INTGR POR, NS

--- MISSISSIPPIAN 4623 (-1643)

LS - WHT / CRM, VF XLN, AREN, SCAT OOL, CHKY / DNS, NS W/ SCAT CHT - GY

LS - WHT / CRM, VF XLN, AREN, FNLY OOL, CHKY / DNS, NS W/ LS - CRM / TAN, F / VF XLN, OOL IN PT, PRED DNS, NS W/ TR CHT - GY / ORG

LS - CRM / TAN, F / VF XLN, OOL IN PT, PRED DNS, NS W/ TR CHT - GY / WHT / ORG

LS - TAN / CRM, F / VF XLN, SCAT CRYPTO XLN, OOL IN PT, PRED DNS, NS

