

# GEOLOGIC REPORT

## DAVID J. GOLDAK

WICHITA, KANSAS  
Scale 1:240 (5"=100') Imperial  
Measured Depth Log

Well Name: Spanier #1-6X  
Well Id: 15-069-20508-0000  
Location: Section 6 - T29S - R30W  
License Number: \_\_\_\_\_  
Spud Date: 08 / 12 / 2019  
Surface Coordinates: 2017' FSL and 2028' FEL  
SE - NW - NW - SE  
Bottom Hole Coordinates: 2017' FSL and 2028' FEL  
SE - NW - NW - SE  
Ground Elevation (ft): 2830' K.B. Elevation (ft): 2843'  
Logged Interval (ft): 3950' To: 5494' Total Depth (ft): 5494'  
Formation: Mississippian - St Louis  
Type of Drilling Fluid: Chemical - Mud-Co

Region: Gray Co., KS  
Drilling Completed: 08 / 25 / 2019

Printed by MudLog from WellSight Systems 1-800-447-1534 www.WellSight.com

### OPERATOR

Company: Stelbar Oil Corporation  
Address: 1625 N. Waterfront Pkwy., Suite 200  
Wichita, Kansas 67206-6602

### GEOLOGIST

Name: David J. Goldak  
Company: D. J. GOLDAK, INC.  
Address: 12427 W Ridgepoint Cir  
Wichita, Kansas 67235

### General Information

CONTRACTOR: Sterling Drilling, Rig #5

#### BIT RECORD:

No.	Size	Make	Jets	Out	Ft Cut	Hours
1	12.25	JZ-HAT417GC	4-16s	1509'	1509'	17.25
2	7.875	JZ-HA20QL	3-18s	2145'	636'	11.25
3	7.875	Taurex-TXT516	5-15s	5446'	3301'	63.75
4	7.875	JZ-HA20QL	3-18s	5494'	48'	4.75

SURVEYS: 709'-0.50, 2082'-0.25, 5446'-0.50

#### GENERAL DRILLING & PUMP INFORMATION:

Collars: 19 joints of collars (6.25"x2.25"): 574.26'  
Drilling: 14,000-16,000 lbs on bit and 90-100 RPM.  
Pumping: 60-65 S/M; 8.8-9.6 B/M; 850-1000 psi at standpipe.

## Daily Status

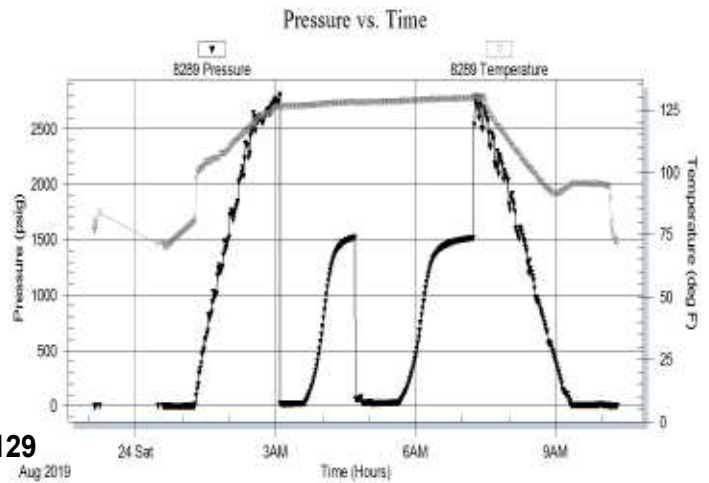
08/12/19 - Spud at 6:00 PM  
 08/13/19 - 648' Drilling  
 08/14/19 - 1,505' On bank mixing mud; Lost full returns @ 1:45 AM; Regain circ; Ream to bottom; Drill to 1,509' and lost full returns  
 08/15/19 - 1,509' On bank mixing mud; Ream to bottom; CTCH and TOH; Set 8-5/8" csg @ 1,509'; PD @ 4:15 AM  
 08/16/19 - 1,509' WOC; DP @ 8:40 PM; Lost returns @ 1,534'  
 08/17/19 - 1,561' In surface csg mixing mud; Drill with partial returns  
 08/18/19 - 1,771' In surface csg mixing mud; Drill with partial returns  
 08/19/19 - 1,962' In surface csg mixing mud; Drill with partial returns to 2,082'; Squeeze @ 1,529' w/ 100 sx; Regain full returns; TOH for PDC bit @ 2,145'  
 08/20/19 - 2,520' Drilling; Displace @ 3,579'  
 08/21/19 - 3,810' Drilling  
 08/22/19 - 4,765' Drilling; Wiper trip @ 5,109'  
 08/23/19 - 5,230' CFS; DST #1 @ 5,446'  
 08/24/19 - 5,446' DST #1 final SI; RTD 5,494' @ 10:10 PM  
 08/25/19 - 5,494' Logging

**DST #1: 5,426' - 5,446' (Miss. St Louis)**  
30" - 60" - 60" - 90"

**IF: Blow building to 9.5 inches**  
**ISI: No return blow**  
**FF: Blow building to BOB in 30 minutes**  
**FSI: No return blow**

**RECOVERY: 10' Total Fluid, consisting of:**  
 10' GO (40% G & 60% O)  
**Sampler: 1.5 cf Gas & 1000 ml Oil @ 600 psi**

**SIP: 1518-1512; FP: 17-30, 30-30; HP: 2800-2788; BHT: 129**



### ROCK TYPES

<table border="0"> <tr><td></td><td>Anhy</td></tr> <tr><td></td><td>Bent</td></tr> <tr><td></td><td>Brec</td></tr> <tr><td></td><td>Cht</td></tr> <tr><td></td><td>Clyst</td></tr> <tr><td></td><td>Coal</td></tr> <tr><td></td><td>Congl</td></tr> <tr><td></td><td>Dol</td></tr> </table>		Anhy		Bent		Brec		Cht		Clyst		Coal		Congl		Dol	<table border="0"> <tr><td></td><td>Gyp</td></tr> <tr><td></td><td>Igne</td></tr> <tr><td></td><td>Lmst</td></tr> <tr><td></td><td>Meta</td></tr> <tr><td></td><td>Mrlst</td></tr> <tr><td></td><td>Salt</td></tr> <tr><td></td><td>Shale</td></tr> <tr><td></td><td>Shcol</td></tr> </table>		Gyp		Igne		Lmst		Meta		Mrlst		Salt		Shale		Shcol	<table border="0"> <tr><td></td><td>Shgy</td></tr> <tr><td></td><td>Slst</td></tr> <tr><td></td><td>Ss</td></tr> <tr><td></td><td>Till</td></tr> <tr><td></td><td>Carb sh</td></tr> <tr><td></td><td>Dol</td></tr> <tr><td></td><td>Dtd</td></tr> <tr><td></td><td>Gry sh</td></tr> </table>		Shgy		Slst		Ss		Till		Carb sh		Dol		Dtd		Gry sh	<table border="0"> <tr><td></td><td>Sandylms</td></tr> <tr><td></td><td>Shale</td></tr> <tr><td></td><td>Slststn</td></tr> <tr><td></td><td>Shlyslts</td></tr> <tr><td></td><td>Sltysh</td></tr> <tr><td></td><td>Lms</td></tr> </table>		Sandylms		Shale		Slststn		Shlyslts		Sltysh		Lms
	Anhy																																																														
	Bent																																																														
	Brec																																																														
	Cht																																																														
	Clyst																																																														
	Coal																																																														
	Congl																																																														
	Dol																																																														
	Gyp																																																														
	Igne																																																														
	Lmst																																																														
	Meta																																																														
	Mrlst																																																														
	Salt																																																														
	Shale																																																														
	Shcol																																																														
	Shgy																																																														
	Slst																																																														
	Ss																																																														
	Till																																																														
	Carb sh																																																														
	Dol																																																														
	Dtd																																																														
	Gry sh																																																														
	Sandylms																																																														
	Shale																																																														
	Slststn																																																														
	Shlyslts																																																														
	Sltysh																																																														
	Lms																																																														

### ACCESSORIES

#### MINERAL

- Anhy
- Arggrn
- Arg
- Bent
- Bit
- Brecfrag
- Calc
- Carb
- Chtdk
- Chtlt
- Dol
- Feldspar
- Ferrpel
- Ferr
- Glau
- Gyp
- Hvymin
- Kaol
- Marl
- Minxl
- Nodule
- Phos
- Pyr



- Salt
- Sandy
- Silt
- Sil
- Sulphur
- Tuff
- Chlorite
- Dol
- Sand
- Silty

#### FOSSIL

- Algae
- Amph
- Belm
- Bioclst
- Brach
- Bryozoa
- Cephal
- Coral
- Crin
- Echin
- Fish
- Foram



- Fossil
- Gastro
- Oolite
- Ostra
- Pelec
- Pellet
- Pisolite
- Plant
- Strom
- Fuss
- Oomold

#### STRINGER

- Anhy
- Arg
- Bent
- Coal
- Dol
- Gyp
- Ls
- Mrst
- Sltstrg
- Ssstrg
- Carbsh



- Clystn
- Dol
- Grysh
- Gryslt
- Lms
- Sandylms
- Sh
- Sltstn

#### TEXTURE

- Boundst
- Chalky
- Cryxln
- Earthy
- Finexln
- Grainst
- Lithogr
- Microxln
- Mudst
- Packst
- Wackest

### OTHER SYMBOLS

#### POROSITY TYPE

- Earthy
- Fenest
- Fracture
- Inter
- Moldic
- Organic
- Pinpoint
- Vuggy

#### SORTING

- Well
- Moderate
- Poor

#### ROUNDING

- Rounded
- Subrnd
- Subang
- Angular

#### OIL SHOWS

- Even
- Spotted
- Ques
- Dead
- Gas show

#### INTERVALS

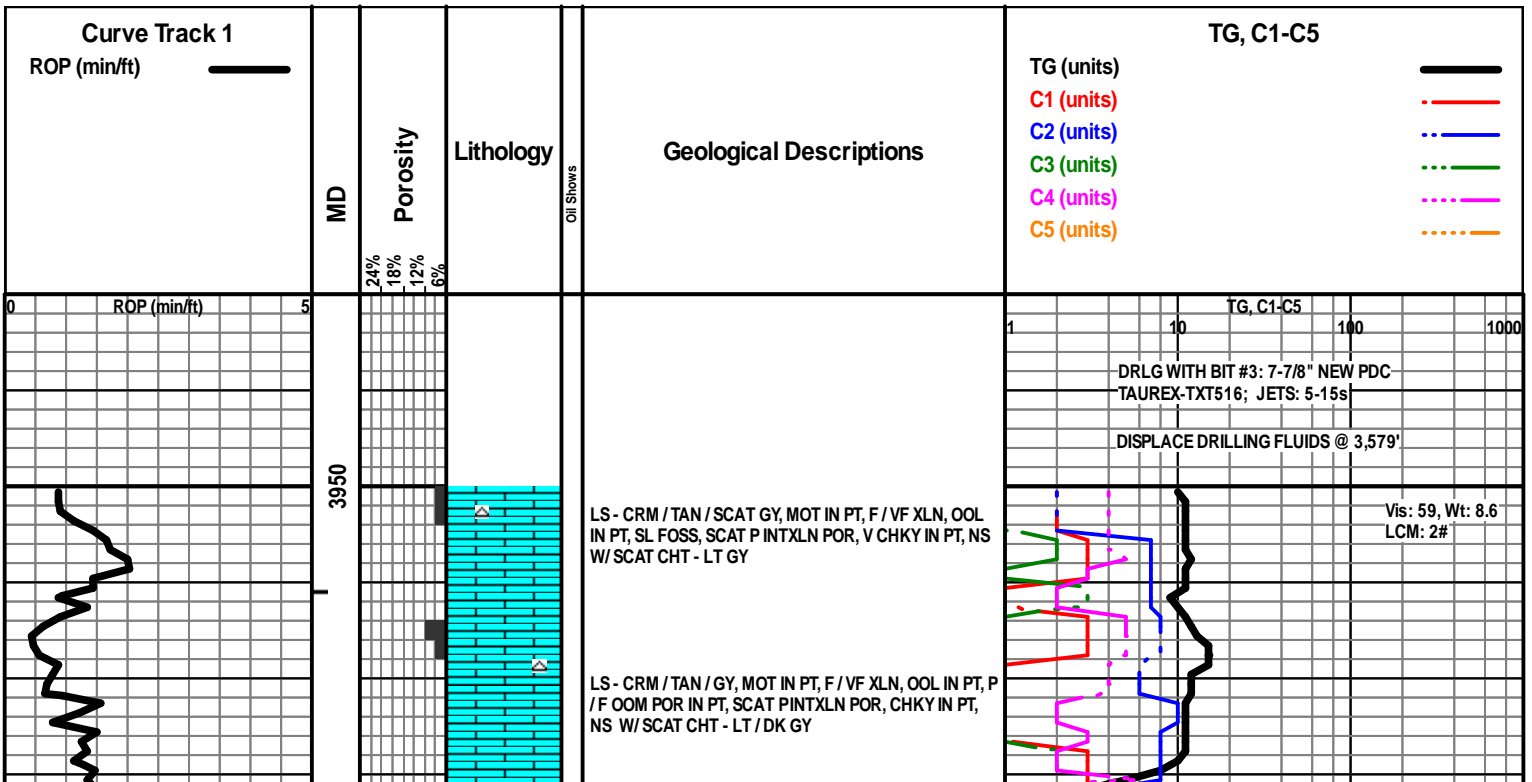
- Core
- Dst

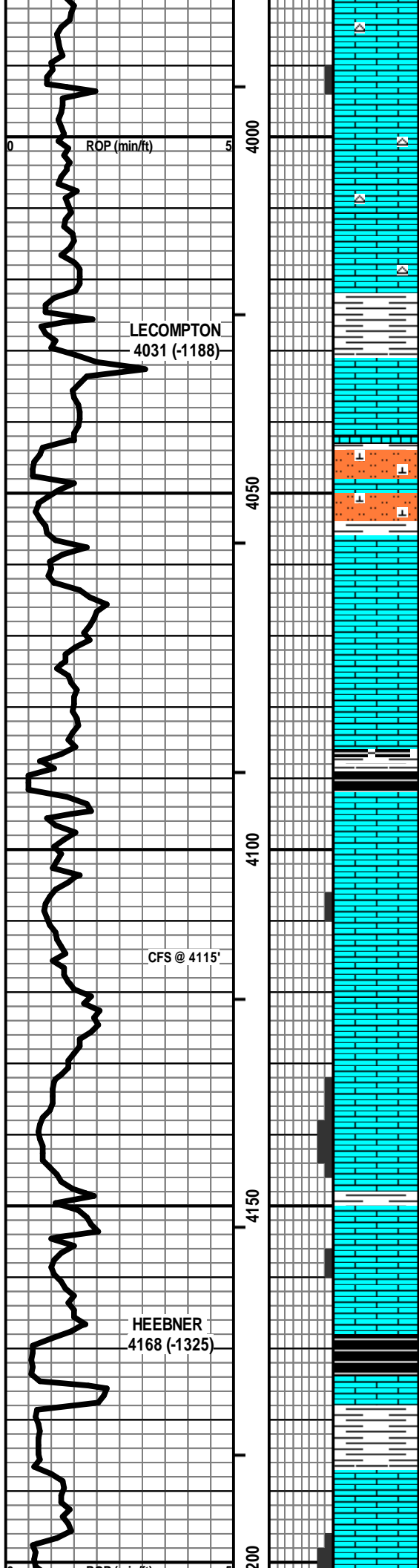


- Dst\_1\_t
- Dst\_1\_b
- Dst

#### EVENTS

- Rft
- Sidewall
- Conn





LS - CRM / TAN, F / VF XLN, F / VF XLN, FOSS IN PT, SCAT OOL, TR P INTXLN POR, SUBCHKY IN PT, PRED DNS, TR GILS, NSFO, TR SPTY STN W/ SCAT CHT - LT GY

TG, C1-C5 100 1000

LS - CRM / TAN, F / VF XLN, F / VF XLN, FOSS IN PT, SCAT OOL, SUBCHKY IN PT, PRED DNS, TR SPTY STN, NSFO, PRED NS W/ CHT - LT / DK GY W/ SH - GY / BLK

Vis: 58, Wt: 8.8,  
YP: 20, GeIS: 14/43,  
pH: 11.0, WL: 8.8,  
Chl: 2,450, Sol: 3.5,  
LCM: 2#

SH - GY / BLK W/ LS - TAN / GY / CRM, MOT IN PT, F / VF XLN, SCAT OOL, PRED DNS, NS

LS - ASABOVE W/ SLTST - GY, MIC, CALC IN PT W/ LS - CRM / TAN, VF XLN, PRED DNS, NS

LS - CRM / TAN / GY, VF / F XLN, FOSS IN PT, SCAT CHKY, PRED DNS, NS

LS - ASABOVE W/ SH - DK GY / BLK, CARB IN PT W/ LS - TAN / GY, MOT IN PT, F XLN, SL FOSS, PRED DNS, NS

LS - CRM / WHT, MOT IN PT, F / VF XLN, SL FOSS, TR P INTXLN POR, CHKY IN PT, PRED DNS, NS

CFS @ 4115'

LS - WHT / CRM, MOT IN PT, VF / F XLN, SL OOL, SL FOSS, CHKY / PRED DNS, NS

LS - CRM / GY / TAN / WHT, MOT IN PT, F / VF XLN, SCAT M / C RECLN CALC, SL OOL, SL FOSS, SCAT INTXLN POR, CHKY IN PT / DNS, NS

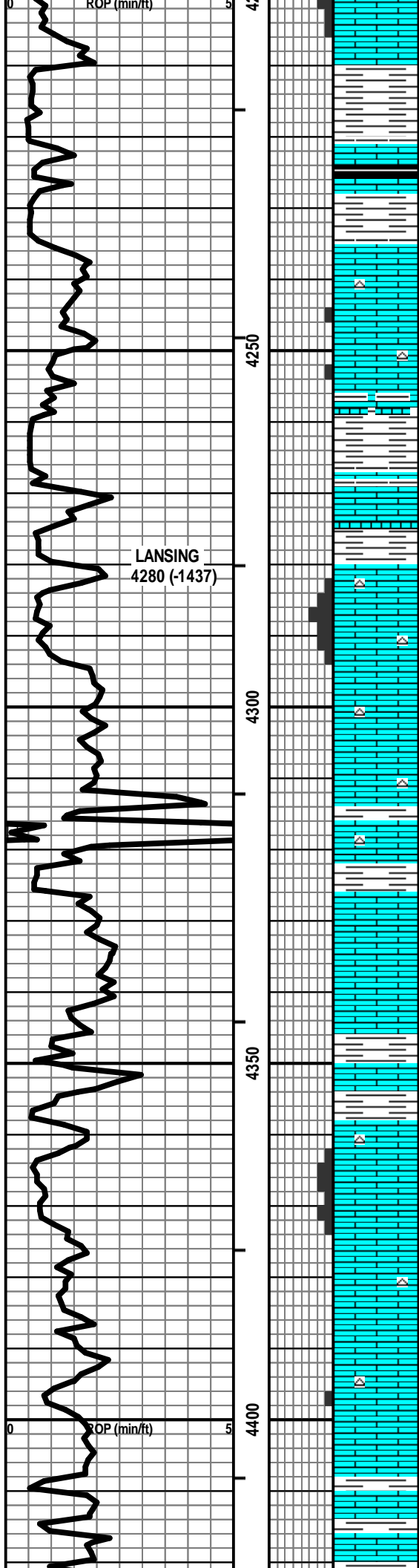
Vis: 58, Wt: 8.9  
LCM: 2#

LS - CRM / GY / TAN / WHT, MOT IN PT, F / VF XLN, SL OOL, SL FOSS, TR P INTXLN POR, CHKY IN PT / DNS, NS

HEEBNER 4168 (-1325)

LS - ASABOVE, NS W/ SH - BLK, CARB W/ LS - TAN / GY, F XLN, PRED DNS, NS

SH - PRED GY W/ LS - CRM / WHT / GY, F / M XLN, SCAT VF XLN, SL FOSS, SCAT P INTXLN POR, CHKY IN PT, PRED DNS, NS



LS - CRM / WHT / TAN / GY, MOT IN PT, VF / F / M XLN, P / F INTXLN POR IN PT, CHKY IN PT / DNS, NS W / SH - PRED GY

PRED SH - GY / BLK, CARB IN PT W / LS - TAN / BRN, MOT, F XLN, PRED DNS, NS

LS - CRM / GY / TAN, F / VF XLN, OOL + FOSS IN PT, SCAT P INTXLN + PPT POR, PRED DNS, NS W / SCAT CHT - LT / DK GY W / SH - GY / BLK

ABNT SH - GY / SCAT BLK W / LS - GY / TAN, MOT, VF XLN, ARGIL / DNS, NS W / LS - CRM / TAN, F / VF XLN, FOSS, PRED DNS, NS

LS - CRM / TAN, F XLN, SCAT M / C RECLN CALC, SL FOSS, TR OOL, F INTXLN POR IN PT, TR PPT + VUG PR, SSGB IN PT, PRED NS W / CHT - LT GY / WHT / TAN

LS - CRM / TAN / GY, F / VF XLN, SL FOSS, SUBCHKY IN PT, PRED DNS, NS W / CHT - LT GY / WHT W / SH - PRED GY

LS - CRM / TAN / SCAT BRN, F / VF XLN, FOSS IN PT, PRED DNS, NS

LS - TAN / CRM / BRN / GY, MOT IN PT, F / VF XLN, OOL IN PT, FOSS IN PT, PRED DNS, SCAT GILS IN PT, PRED NS W / SH - GY / BLK

LS - CRM / TAN / LT GY, MOT IN PT, PRED F XLN, SCAT REXLN CALC, OOL IN PT, SL FOSS, P / F VUG + INTXLN POR IN PT, CHKY IN PT, NS W / SCAT CHT - LT GY / WHT

LS - TAN / BRN / GY, F / VF XLN, SL FOSS, SCAT P INTXLN POR, PRED DNS, SCAT GILS, NSFO W / SCAT CHT - GY / TAN

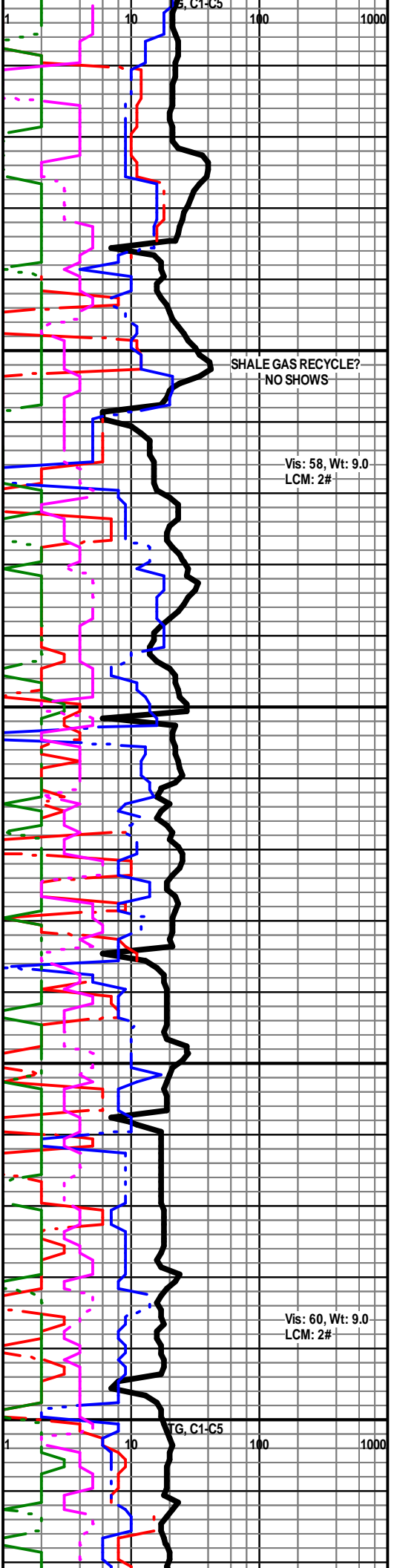
LS - CRM / GY / TAN, MOT IN PT, F / VF XLN, TR FOSS, SCAT ARGIL, PRED DNS, NS W / SH - PRED GY

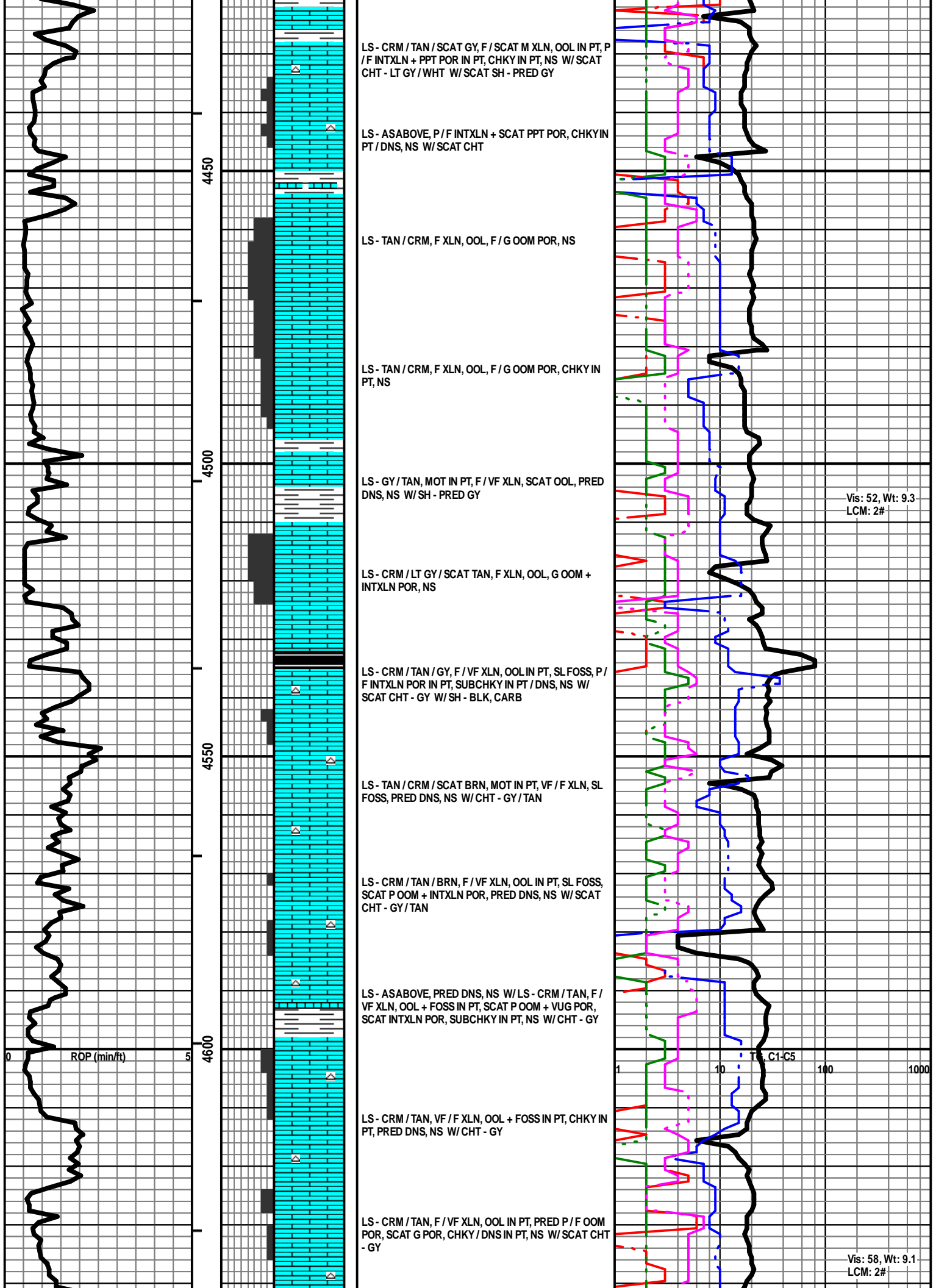
LANSING  
4280 (-1437)

SHALE GAS RECYCLE?  
NO SHOWS

Vis: 58, Wt: 9.0  
LCM: 2#

Vis: 60, Wt: 9.0  
LCM: 2#





LS - CRM / TAN / SCAT GY, F / SCAT M XLN, OOL IN PT, P / F INTXLN + PPT POR IN PT, CHKY IN PT, NS W/ SCAT CHT - LT GY / WHT W/ SCAT SH - PRED GY

LS - AS ABOVE, P / F INTXLN + SCAT PPT POR, CHKY IN PT / DNS, NS W/ SCAT CHT

LS - TAN / CRM, F XLN, OOL, F / G OOM POR, NS

LS - TAN / CRM, F XLN, OOL, F / G OOM POR, CHKY IN PT, NS

LS - GY / TAN, MOT IN PT, F / VF XLN, SCAT OOL, PRED DNS, NS W/ SH - PRED GY

LS - CRM / LT GY / SCAT TAN, F XLN, OOL, G OOM + INTXLN POR, NS

LS - CRM / TAN / GY, F / VF XLN, OOL IN PT, SL FOSS, P / F INTXLN POR IN PT, SUBCHKY IN PT / DNS, NS W/ SCAT CHT - GY W/ SH - BLK, CARB

LS - TAN / CRM / SCAT BRN, MOT IN PT, VF / F XLN, SL FOSS, PRED DNS, NS W/ CHT - GY / TAN

LS - CRM / TAN / BRN, F / VF XLN, OOL IN PT, SL FOSS, SCAT P OOM + INTXLN POR, PRED DNS, NS W/ SCAT CHT - GY / TAN

LS - AS ABOVE, PRED DNS, NS W/ LS - CRM / TAN, F / VF XLN, OOL + FOSS IN PT, SCAT P OOM + VUG POR, SCAT INTXLN POR, SUBCHKY IN PT, NS W/ CHT - GY

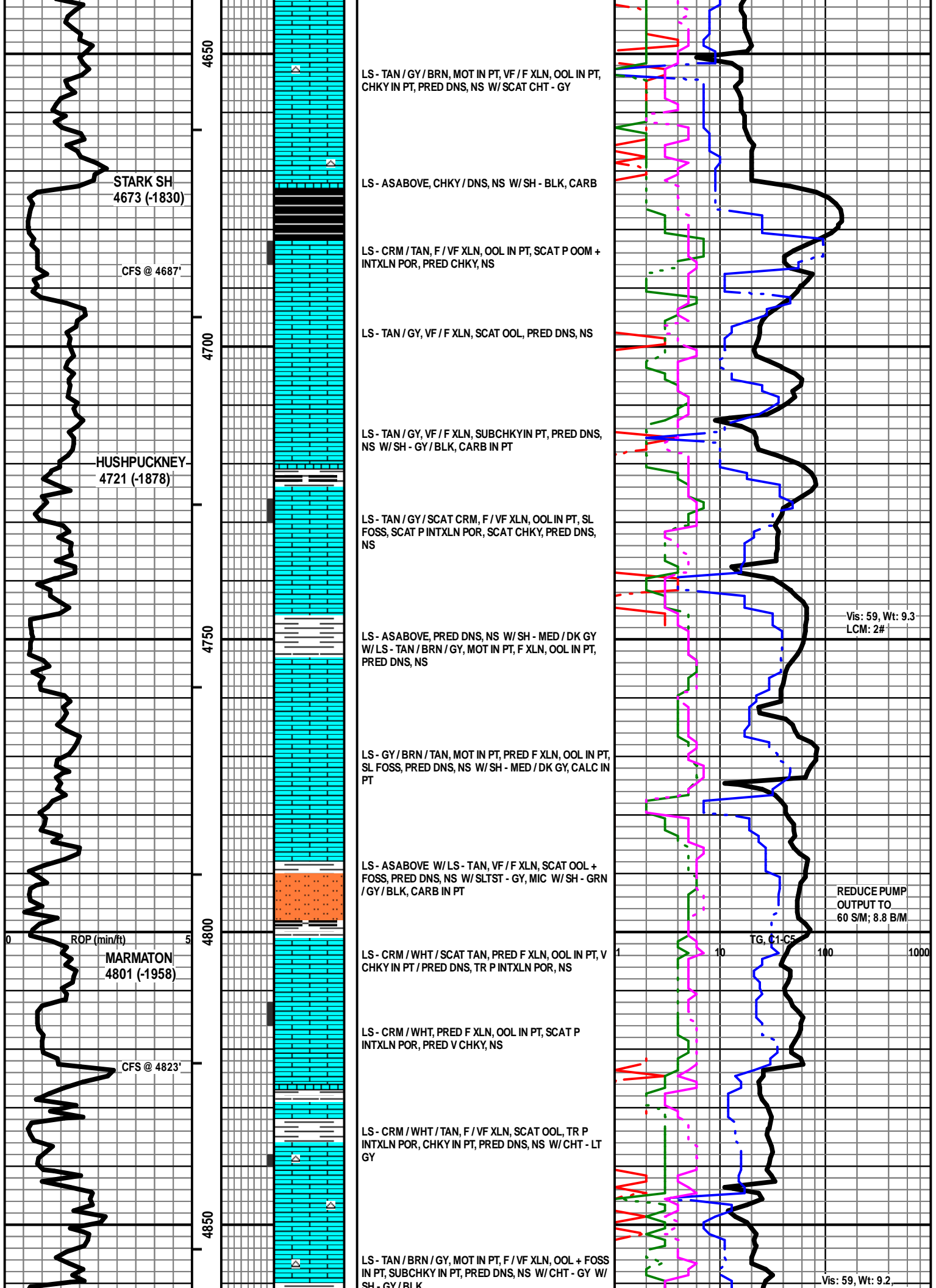
LS - CRM / TAN, VF / F XLN, OOL + FOSS IN PT, CHKY IN PT, PRED DNS, NS W/ CHT - GY

LS - CRM / TAN, F / VF XLN, OOL IN PT, PRED P / F OOM POR, SCAT G POR, CHKY / DNS IN PT, NS W/ SCAT CHT - GY

Vis: 52, Wt: 9.3  
LCM: 2#

T.C. C1-C5

Vis: 58, Wt: 9.1  
LCM: 2#



STARK SH  
4673 (-1830)

CFS @ 4687'

HUSHPUCKNEY-  
4721 (-1878)

MARMATON  
4801 (-1958)

CFS @ 4823'

LS - TAN / GY / BRN, MOT IN PT, VF / F XLN, OOL IN PT, CHKY IN PT, PRED DNS, NS W/ SCAT CHT - GY

LS - ASABOVE, CHKY / DNS, NS W/ SH - BLK, CARB

LS - CRM / TAN, F / VF XLN, OOL IN PT, SCAT P OOM + INTXLN POR, PRED CHKY, NS

LS - TAN / GY, VF / F XLN, SCAT OOL, PRED DNS, NS

LS - TAN / GY, VF / F XLN, SUBCHKY IN PT, PRED DNS, NS W/ SH - GY / BLK, CARB IN PT

LS - TAN / GY / SCAT CRM, F / VF XLN, OOL IN PT, SL FOSS, SCAT P INTXLN POR, SCAT CHKY, PRED DNS, NS

LS - ASABOVE, PRED DNS, NS W/ SH - MED / DK GY W/ LS - TAN / BRN / GY, MOT IN PT, F XLN, OOL IN PT, PRED DNS, NS

LS - GY / BRN / TAN, MOT IN PT, PRED F XLN, OOL IN PT, SL FOSS, PRED DNS, NS W/ SH - MED / DK GY, CALC IN PT

LS - ASABOVE W/ LS - TAN, VF / F XLN, SCAT OOL + FOSS, PRED DNS, NS W/ SLTST - GY, MIC W/ SH - GRN / GY / BLK, CARB IN PT

LS - CRM / WHT / SCAT TAN, PRED F XLN, OOL IN PT, V CHKY IN PT / PRED DNS, TR P INTXLN POR, NS

LS - CRM / WHT, PRED F XLN, OOL IN PT, SCAT P INTXLN POR, PRED V CHKY, NS

LS - CRM / WHT / TAN, F / VF XLN, SCAT OOL, TR P INTXLN POR, CHKY IN PT, PRED DNS, NS W/ CHT - LT GY

LS - TAN / BRN / GY, MOT IN PT, F / VF XLN, OOL + FOSS IN PT, SUBCHKY IN PT, PRED DNS, NS W/ CHT - GY W/ SH - GY / BLK

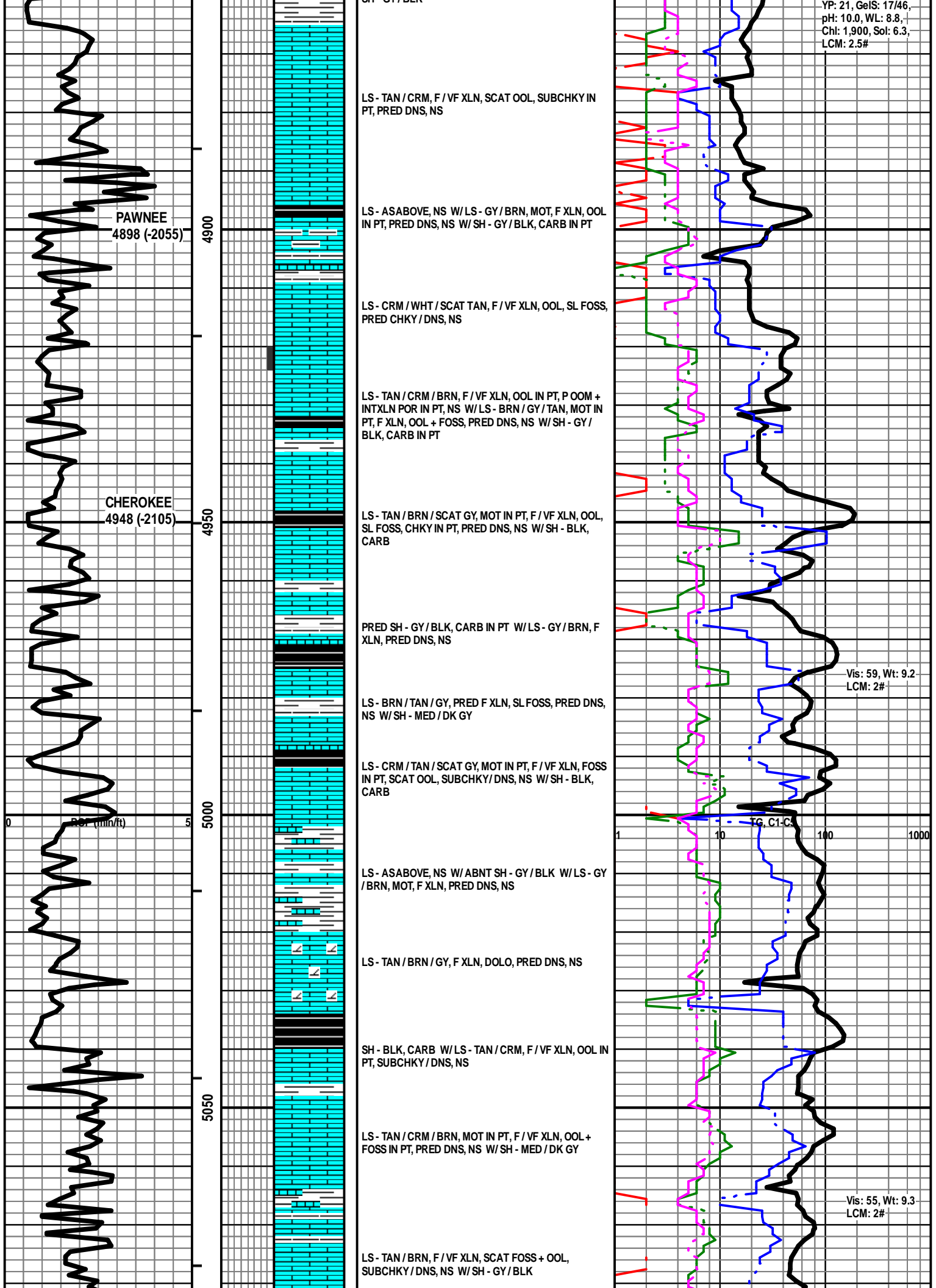
Vis: 59, Wt: 9.3  
LCM: 2#

REDUCE PUMP  
OUTPUT TO  
60 S/M; 8.8 B/M

TG, C1-C5

Vis: 59, Wt: 9.2,

YP: 21, GeIS: 17/46,  
pH: 10.0, WL: 8.8,  
Chl: 1,900, Sol: 6.3,  
LCM: 2.5#



LS - TAN / CRM, F / VF XLN, SCAT OOL, SUBCHKY IN PT, PRED DNS, NS

LS - ASABOVE, NS W/LS - GY / BRN, MOT, F XLN, OOL IN PT, PRED DNS, NS W/SH - GY / BLK, CARB IN PT

LS - CRM / WHT / SCAT TAN, F / VF XLN, OOL, SL FOSS, PRED CHKY / DNS, NS

LS - TAN / CRM / BRN, F / VF XLN, OOL IN PT, P OOM + INTXLN POR IN PT, NS W/LS - BRN / GY / TAN, MOT IN PT, F XLN, OOL + FOSS, PRED DNS, NS W/SH - GY / BLK, CARB IN PT

LS - TAN / BRN / SCAT GY, MOT IN PT, F / VF XLN, OOL, SL FOSS, CHKY IN PT, PRED DNS, NS W/SH - BLK, CARB

PRED SH - GY / BLK, CARB IN PT W/LS - GY / BRN, F XLN, PRED DNS, NS

LS - BRN / TAN / GY, PRED F XLN, SL FOSS, PRED DNS, NS W/SH - MED / DK GY

LS - CRM / TAN / SCAT GY, MOT IN PT, F / VF XLN, FOSS IN PT, SCAT OOL, SUBCHKY / DNS, NS W/SH - BLK, CARB

LS - ASABOVE, NS W/ABNT SH - GY / BLK W/LS - GY / BRN, MOT, F XLN, PRED DNS, NS

LS - TAN / BRN / GY, F XLN, DOLO, PRED DNS, NS

SH - BLK, CARB W/LS - TAN / CRM, F / VF XLN, OOL IN PT, SUBCHKY / DNS, NS

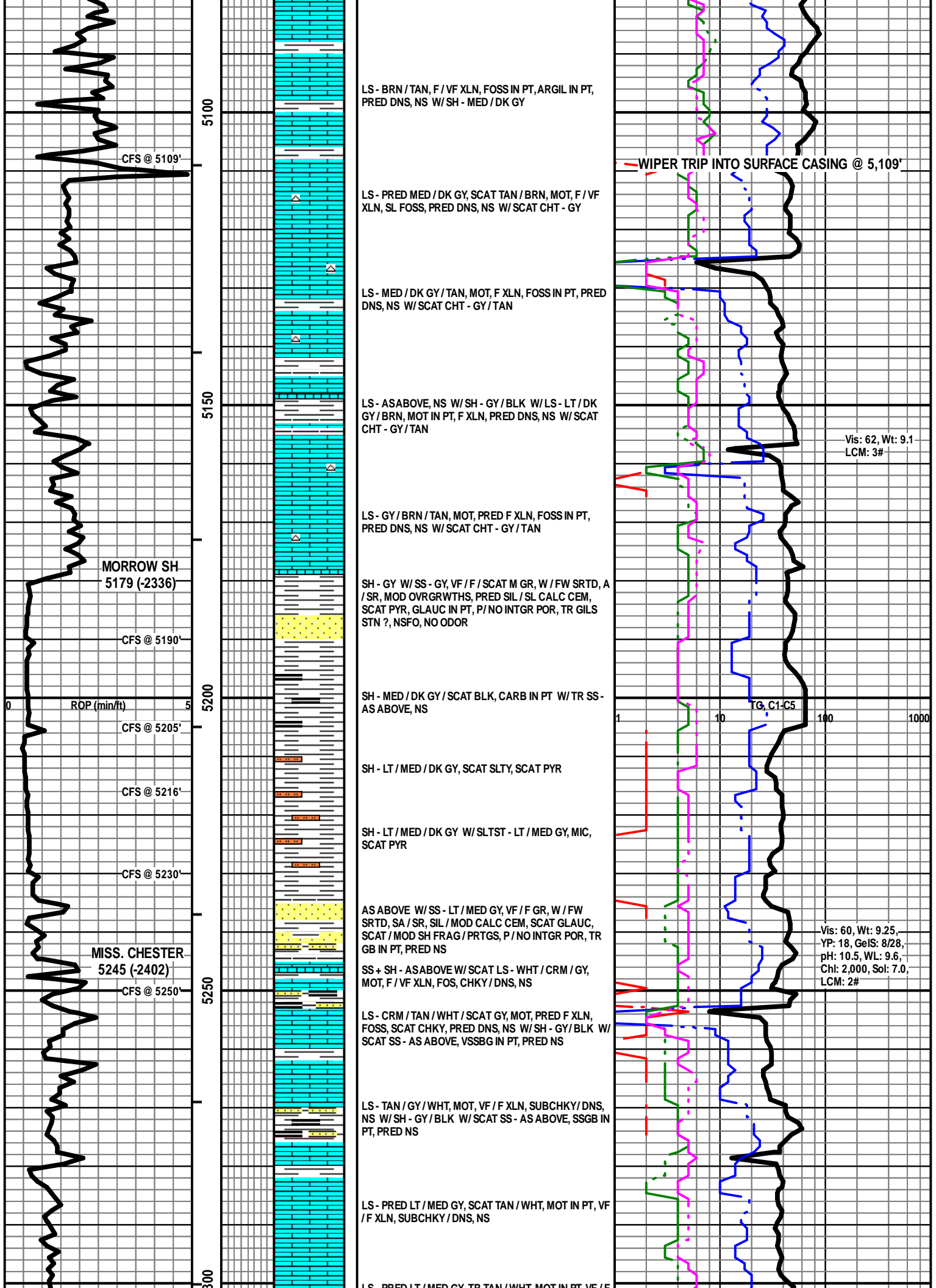
LS - TAN / CRM / BRN, MOT IN PT, F / VF XLN, OOL + FOSS IN PT, PRED DNS, NS W/SH - MED / DK GY

LS - TAN / BRN, F / VF XLN, SCAT FOSS + OOL, SUBCHKY / DNS, NS W/SH - GY / BLK

Vis: 59, Wt: 9.2  
LCM: 2#

Vis: 55, Wt: 9.3  
LCM: 2#





LS - BRN / TAN, F / VF XLN, FOSS IN PT, ARGIL IN PT, PRED DNS, NS W/ SH - MED / DK GY

LS - PRED MED / DK GY, SCAT TAN / BRN, MOT, F / VF XLN, SL FOSS, PRED DNS, NS W/ SCAT CHT - GY

LS - MED / DK GY / TAN, MOT, F XLN, FOSS IN PT, PRED DNS, NS W/ SCAT CHT - GY / TAN

LS - AS ABOVE, NS W/ SH - GY / BLK W/ LS - LT / DK GY / BRN, MOT IN PT, F XLN, PRED DNS, NS W/ SCAT CHT - GY / TAN

LS - GY / BRN / TAN, MOT, PRED F XLN, FOSS IN PT, PRED DNS, NS W/ SCAT CHT - GY / TAN

SH - GY W/ SS - GY, VF / F / SCAT M GR, W / FW SRTD, A / SR, MOD OVRGRWTHS, PRED SIL / SL CALC CEM, SCAT PYR, GLAUC IN PT, P / NO INTGR POR, TR GILS STN ?, NSFO, NO ODOR

SH - MED / DK GY / SCAT BLK, CARB IN PT W/ TR SS - AS ABOVE, NS

SH - LT / MED / DK GY, SCAT SLTY, SCAT PYR

SH - LT / MED / DK GY W/ SLTST - LT / MED GY, MIC, SCAT PYR

AS ABOVE W/ SS - LT / MED GY, VF / F GR, W / FW SRTD, SA / SR, SIL / MOD CALC CEM, SCAT GLAUC, SCAT / MOD SH FRAG / PRTGS, P / NO INTGR POR, TR GB IN PT, PRED NS

SS + SH - AS ABOVE W/ SCAT LS - WHT / CRM / GY, MOT, F / VF XLN, FOS, CHKY / DNS, NS

LS - CRM / TAN / WHT / SCAT GY, MOT, PRED F XLN, FOSS, SCAT CHKY, PRED DNS, NS W/ SH - GY / BLK W/ SCAT SS - AS ABOVE, VSSBG IN PT, PRED NS

LS - TAN / GY / WHT, MOT, VF / F XLN, SUBCHKY / DNS, NS W/ SH - GY / BLK W/ SCAT SS - AS ABOVE, SSGB IN PT, PRED NS

LS - PRED LT / MED GY, SCAT TAN / WHT, MOT IN PT, VF / F XLN, SUBCHKY / DNS, NS

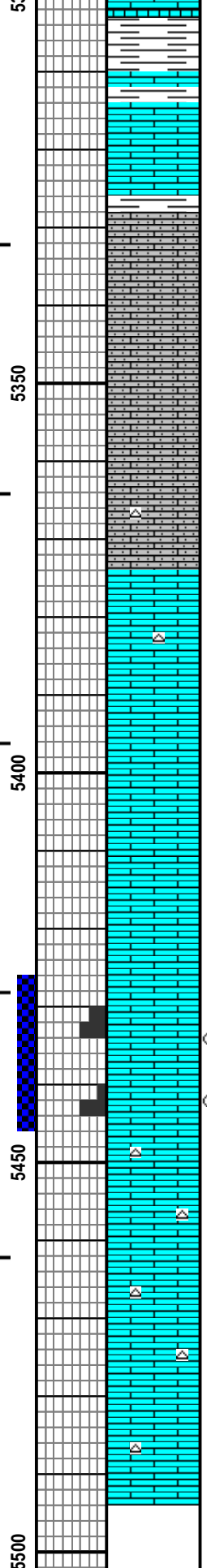
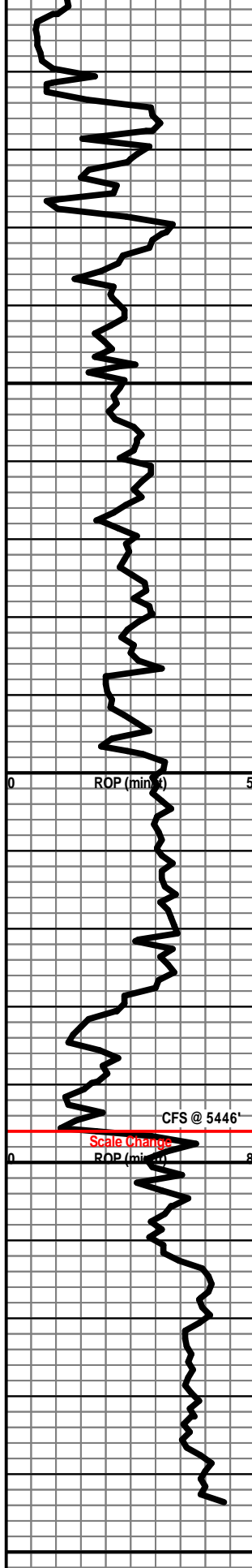
LS - PRED LT / MED GY, TR TAN / WHT, MOT IN PT, VF / F

WIPER TRIP INTO SURFACE CASING @ 5,109'

Vis: 62, Wt: 9.1  
LCM: 3#

TG, C1-C5

Vis: 60, Wt: 9.25,  
YP: 18, GeIS: 8/28,  
pH: 10.5, WL: 9.6,  
Chl: 2,000, Sol: 7.0,  
LCM: 2#



LS - PRED LT / MED GY, TR TAN / WHT, MOT IN PT, VF / F XLN, SUBCHKY / DNS, NS W / ABNT SH - PRED GY / SCAT BLK

LS - PRED LT / MED GY, VF / F XLN, SUBCHKY / DNS, NS W / SH - GY

— MISS. ST GEN 5328 (-2485)

LS - CRM / WHT, VF XLN, FNLYOOL, AREN, VF QTZ GRS, SUBCHKY / DNS, NS

LS - CRM / WHT, VF XLN, FNLYOOL, AREN, VF QTZ GRS, CHKY / DNS, NS W / TR CHT - GY

— MISS. ST LOUIS 5374 (-2531)

LS - CRM / TAN, PRED VF / F XLN, SCAT CRYPTO XLN, TR OOL, PRED DNS, NS W / TR CHT - LT GY / ORG

LS - CRM / TAN, PRED VF / F XLN, SCAT CRYPTO XLN, SCAT OOL, PRED DNS, NS

LS - CRM / TAN, PRED F / VF / CRYPTO XLN, SCAT OOL, PRED DNS, NS

LS - CRM / TAN, F XLN, OOL, F / SCAT G INTOOL POR, ABNT FREE OOL, MOD CHKY, FEW PCS VSSFO, NO ODOR, FEW PCS SPTY STN, F / G FLUOR + CUT, SOME BARR POR

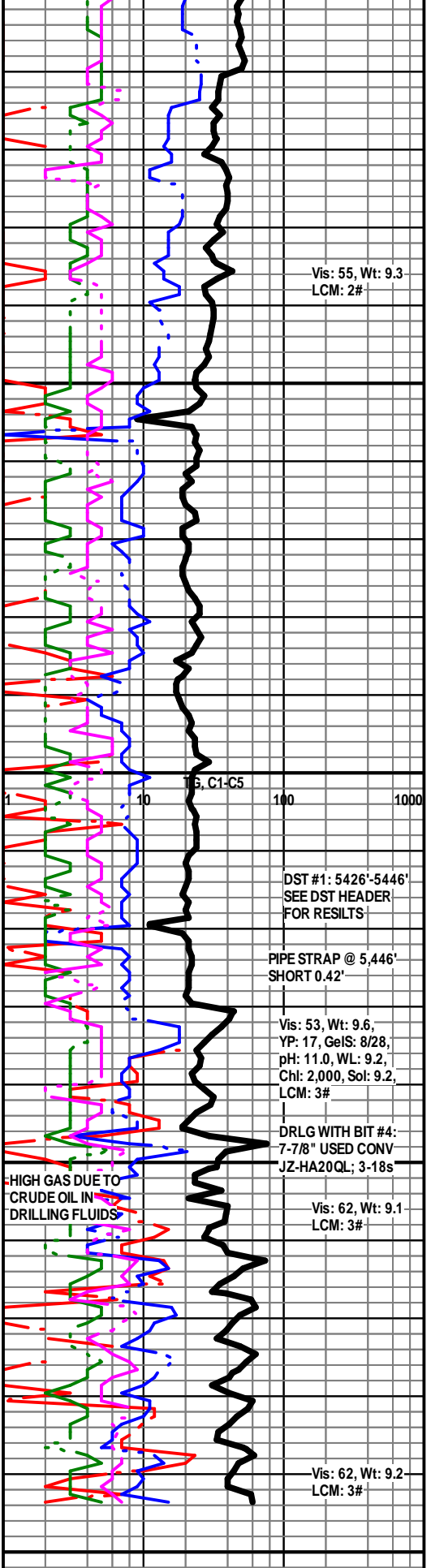
LS - AS ABOVE, V CHKY, TWO PCS VSSFO, NO ODOR, FEW PCS SPTY STN, F / G FLUOR + CUT, SOME BARR POR

LS - TAN / CRM, F / VF XLN, OOL IN PT, SCAT SUBCHKY, PRED DNS, NS W / CHT - LT GY / WHT

LS - TAN / SCAT CRM, F / VF XLN, OOL IN PT, SCAT SUBCHKY, PRED DNS, NS W / CHT - LT GY / WHT

LS - TAN, F / VF XLN, OOL IN PT, PRED DNS, NS W / CHT - LT GY / WHT

**TOTAL DEPTH 5494 (-2651)**



Vis: 55, Wt: 9.3  
LCM: 2#

DST #1: 5426'-5446'  
SEE DST HEADER FOR RESULTS

PIPE STRAP @ 5,446'  
SHORT 0.42'

Vis: 53, Wt: 9.6,  
YP: 17, GeIS: 8/28,  
pH: 11.0, WL: 9.2,  
Chl: 2,000, Sol: 9.2,  
LCM: 3#

DRLG WITH BIT #4:  
7-7/8" USED CONV  
JZ-HA20QL; 3-18s

Vis: 62, Wt: 9.1  
LCM: 3#

Vis: 62, Wt: 9.2  
LCM: 3#

