



**TRILOBITE
TESTING, INC.**

DRILL STEM TEST REPORT

Meridian Energy Inc.
1475 Ward Dr.
Franktown, CO 80116
ATTN: Maxwell LaFon

2/1s/35w Rawlins KS
Sabatka #1
Job Ticket: 64694 **DST#: 1**
Test Start: 2019.07.30 @ 05:15:00

GENERAL INFORMATION:

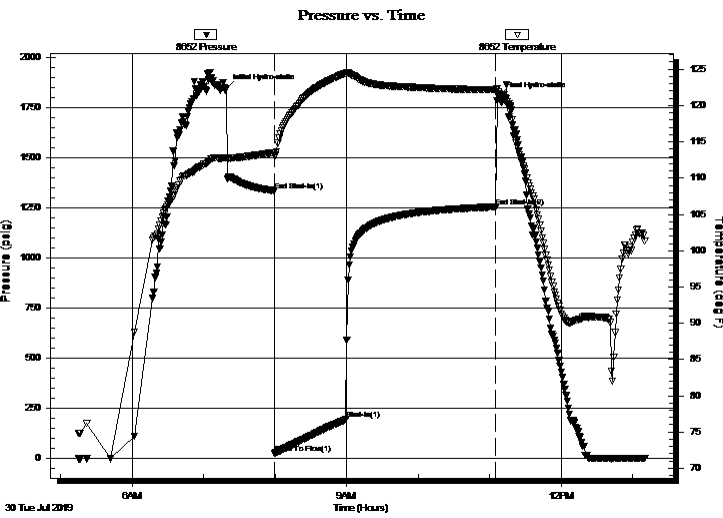
Formation: **Oread**
Deviated: No Whipstock: ft (KB) Test Type: Conventional Bottom Hole (Initial)
Time Tool Opened: 07:59:45 Tester: James Winder
Time Test Ended: 13:10:15 Unit No: 83

Interval: **3850.00 ft (KB) To 3899.00 ft (KB) (TVD)** Reference Elevations: 3062.00 ft (KB)
Total Depth: 3899.00 ft (KB) (TVD) 3057.00 ft (CF)
Hole Diameter: 7.88 inches Hole Condition: Fair KB to GR/CF: 5.00 ft

Serial #: 8652 Outside
Press@RunDepth: 194.74 psig @ 3851.00 ft (KB) Capacity: 8000.00 psig
Start Date: 2019.07.30 End Date: 2019.07.30 Last Calib.: 2019.07.30
Start Time: 05:15:05 End Time: 13:10:14 Time On Btm: 2019.07.30 @ 07:19:15
Time Off Btm: 2019.07.30 @ 11:07:15

TEST COMMENT: Tool didn't open - IF: Blow built to 1/8"
45 - IS: No blow back
60 - FF: Blow built to BOB (11") at 15 1/2 min., built to 39"
120 - FSI: No blow back

PRESSURE SUMMARY



Time (Min.)	Pressure (psig)	Temp (deg F)	Annotation
0	1843.76	112.82	Initial Hydro-static
40	1333.11	113.55	End Shut-In(1)
41	26.30	113.03	Open To Flow (1)
101	194.74	124.45	Shut-In(1)
226	1254.43	122.20	End Shut-In(2)
228	1805.83	121.88	Final Hydro-static

Recovery

Length (ft)	Description	Volume (bbl)
382.00	MCW w/trace oil 87%w , 13%m	5.36

Gas Rates

Choke (inches)	Pressure (psig)	Gas Rate (Mcf/d)
----------------	-----------------	------------------



**TRILOBITE
TESTING, INC.**

DRILL STEM TEST REPORT

Meridian Energy Inc.
1475 Ward Dr.
Franktown, CO 80116
ATTN: Maxwell LaFon

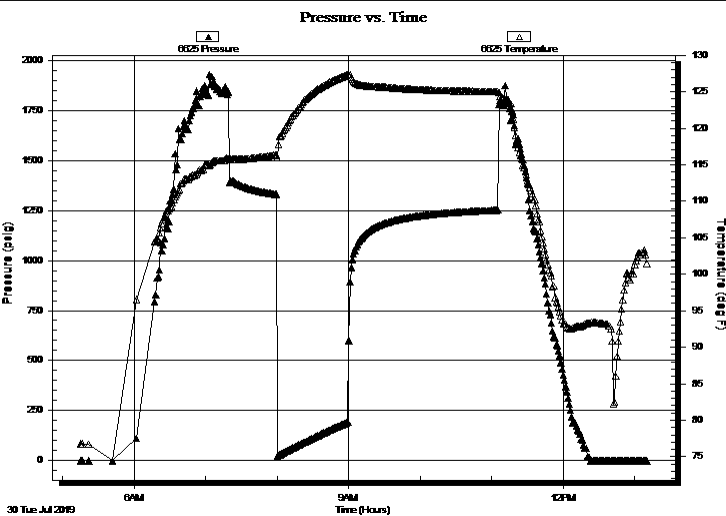
2/1s/35w Rawlins KS
Sabatka #1
Job Ticket: 64694 **DST#: 1**
Test Start: 2019.07.30 @ 05:15:00

GENERAL INFORMATION:

Formation: **Oread**
Deviated: No Whipstock: ft (KB)
Time Tool Opened: 07:59:45
Time Test Ended: 13:10:15
Interval: **3850.00 ft (KB) To 3899.00 ft (KB) (TVD)**
Total Depth: 3899.00 ft (KB) (TVD)
Hole Diameter: 7.88 inches Hole Condition: Fair
Test Type: Conventional Bottom Hole (Initial)
Tester: James Winder
Unit No: 83
Reference Elevations: 3062.00 ft (KB)
3057.00 ft (CF)
KB to GR/CF: 5.00 ft

Serial #: 6625 Inside
Press@RunDepth: psig @ 3851.00 ft (KB) Capacity: 8000.00 psig
Start Date: 2019.07.30 End Date: 2019.07.30 Last Calib.: 2019.07.30
Start Time: 05:15:05 End Time: 13:10:44 Time On Btm:
Time Off Btm:

TEST COMMENT: Tool didn't open - IF: Blow built to 1/8"
45 - IS: No blow back
60 - FF: Blow built to BOB (11") at 15 1/2 min., built to 39"
120 - FS: No blow back



PRESSURE SUMMARY

Time (Min.)	Pressure (psig)	Temp (deg F)	Annotation

Recovery

Length (ft)	Description	Volume (bbl)
382.00	MCW w/trace oil 87%w , 13%m	5.36

Gas Rates

	Choke (inches)	Pressure (psig)	Gas Rate (Mcf/d)



**TRILOBITE
TESTING, INC.**

DRILL STEM TEST REPORT

FLUID SUMMARY

Meridian Energy Inc.

2/1s/35w Rawlins KS

1475 Ward Dr.
Franktown, CO 80116

Sabatka #1

Job Ticket: 64694

DST#: 1

ATTN: Maxwell LaFon

Test Start: 2019.07.30 @ 05:15:00

Mud and Cushion Information

Mud Type: Gel Chem

Cushion Type:

Oil API:

deg API

Mud Weight: 9.00 lb/gal

Cushion Length:

ft

Water Salinity:

26000 ppm

Viscosity: 52.00 sec/qt

Cushion Volume:

bbbl

Water Loss: 11.39 in³

Gas Cushion Type:

Resistivity: ohm.m

Gas Cushion Pressure:

psig

Salinity: 1500.00 ppm

Filter Cake: 1.00 inches

Recovery Information

Recovery Table

Length ft	Description	Volume bbl
382.00	MCW w/trace oil 87%w, 13%m	5.358

Total Length: 382.00 ft Total Volume: 5.358 bbl

Num Fluid Samples: 0

Num Gas Bombs: 0

Serial #:

Laboratory Name:

Laboratory Location:

Recovery Comments: RW = .204 ohms @ 90.3 deg F Chlorides = 26,000 ppm

