

KITT NOAH

PETROLEUM GEOLOGIST
Kansas License #229



GEOLOGIST'S REPORT

DRILLING TIME AND SAMPLE LOG

ELEVATION: **KB 1916**
GL: **1911**
MEASURED FROM: **KB**

#15-167-24,094

OPERATOR: **Russell Oil, Inc.**
LEASE: **Nuss "C"** WELL NO: **#2**
LOCATION: **2115'FS & 1490'FE**
SEC: **32** TWP: **15S** RNG: **14W**

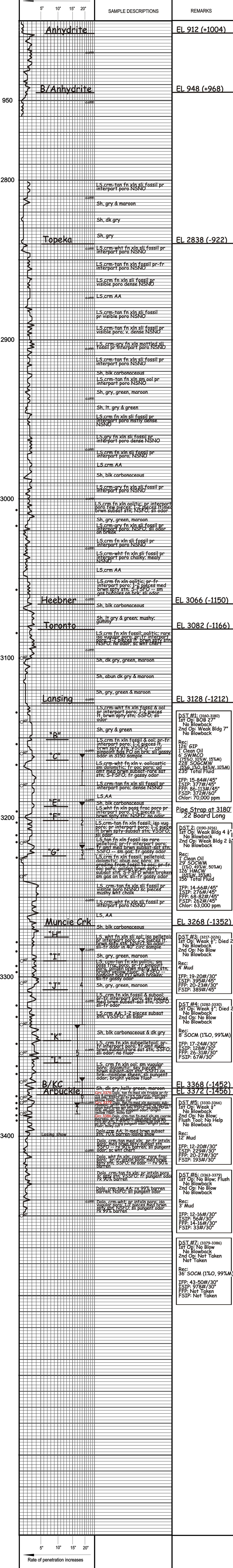
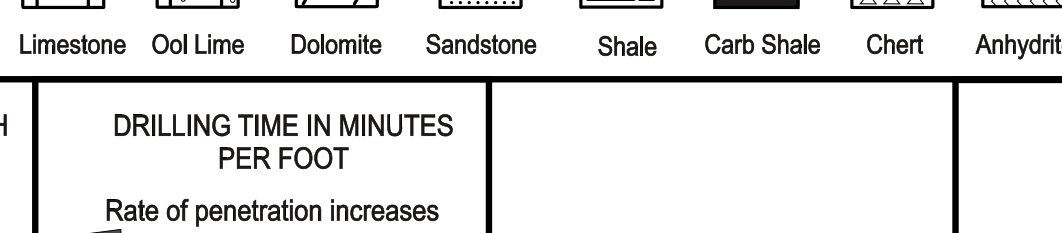
COUNTY: **Russell** STATE: **Kansas**
CASSING RECORD:
SURFACE: **8 5/8" set at 915' w/37.5 sx.**
PRODUCTION: **4 1/2" set at 3446' w/1300 sx.**
DV/TOOL: _____

FORMATION LOG
Anhydrite 912 (+1004)
B/Anhydrite 948 (-968)
Topeka 2838 (-922)
Heebner 3082 (-1166)
Lansing 3128 (-1212)
Muncie Creek 3268 (-1352)
B/KC 3368 (-1452)
Arbuckle 3372 (-1456)
RID 3450 (-1534)
LTD 3448 (-1532)

CONTRACTOR: **WV Drilling Rig #8**
 COMM: **7-11-2019** COMPL: **7-20-2019**
 RTD: **3450** LTD: **3448**
 SAMPLES SAVED FROM: **2800 to TD**
 DRILLING TIME SAVED FROM: **2800 to TD**
 SAMPLES EXAMINED FROM: **2800 to TD**
 GEO. OIGAL SUPERVISION FROM: **2800 to TD**
 MUD UP: **2297** MUD TYPE: **chemical**
 MUDCO: **early Schmidtberger**
 DRILL STEM TESTS TAKEN: **7**
Diamond - Ricky Roy

SURVEYS: **Halliburton**
Spectral Density Neutron Array Compensated Resistivity Microlog

LEGEND



OPERATOR: **Russell Oil, Inc.** LOCATION: **2115'FS & 1490'FE**
 LEASE: **Nuss "C"** WELL NO: **#2** SEC: **32** TWP: **15S** RNG: **14W**
 API: **15-167-24,094** FIELD: **Nuss** COUNTY: **Russell** STATE: **Kansas**

ELEVATION: **KB 1916**