

OPERATOR

Company: Charles N. Griffin
Address: PO Box 347
Pratt, KS 67124

Contact Geologist:
Contact Phone Nbr:
Well Name: #1 Summer
Location: Section 33-29S-15W
API: 15-151-22495
Pool:
State: Kansas

Field: Wildcat
Country: USA

Scale 1:240 Imperial

Well Name: #1 Summer
Surface Location: Section 33-29S-15W
Bottom Location:
API: 15-151-22495
License Number:
Spud Date: 7/4/2019
Region: Pratt County
Drilling Completed: 7/11/2019
Surface Coordinates: 990' FSL & 1980 FWL
Bottom Hole Coordinates:
Ground Elevation: 1988.00ft
K.B. Elevation: 1999.00ft
Logged Interval: 3800.00ft
Total Depth: 4830.00ft
Formation:
Drilling Fluid Type: Chemical (MudCo)

Time: 1:15 PM

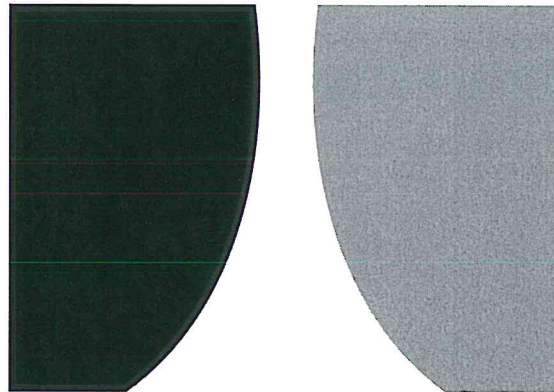
Time: 9:15 AM

To: 4830.00ft

SURFACE CO-ORDINATES

Well Type: Vertical
Longitude:
Latitude:
N/S Co-ord: 990' FSL
E/W Co-ord: 1980 FWL

LOGGED BY



TERRATECH
ENERGY SERVICE, LLC

Company: TerraTech Energy Service LLC.
Address: 1632 S. West St. Suite 12
Wichita, KS 67208

Phone Nbr: 316-617-3959
Logged By: Geologist

Name: Bruce Reed

CONTRACTOR

Contractor:	WW Drilling		
Rig #:	14		
Rig Type:	mud rotary		
Spud Date:	7/4/2019	Time:	1:15 PM
TD Date:	7/11/2019	Time:	9:15 AM
Rig Release:	7/12/2019	Time:	5:00 PM

ELEVATIONS

K.B. Elevation:	1999.00ft	Ground Elevation:	1988.00ft
K.B. to Ground:	11.00ft		

NOTES

Surface Casing: 8-5/8" at 269'
 Production Casing: 5-1/2" at 4818'

Daily Penetration:

07/04/19	Spud @ 1:15 PM
07/05/19	536'
07/06/19	2568'
07/07/19	2821'
07/08/19	2821'
07/09/19	2821'
07/10/19	3480'
07/11/19	4694' RTD @ 9:15 AM
07/12/19	4830' Rig released @ 5:00 PM

FORMATION TOPS

Formation	Sample Top	Datum	Log Top	Datum	Comparison*
Heebner	3887'	-1888	3888'	-1889	-6
Brown Lime	4060'	-2061	4060'	-2061	-8
Lansing	4075'	-2076	4075'	-2076	-7
Stark	4338'	-2339	4338'	-2339	-8
Base KC	4462'	-2463	4465'	-2466	-7
Pawnee	4528'	-2529	4528'	-2529	-6
Cherokee	4565'	-2566	4566'	-2567	-9
Viola	4610'	-2611	4611'	-2612	-9
Simpson	4751'	-2752	4751'	-2752	-5
Sand	4786'	-2787	4786'	-2787	-7

*Imperial Oil Company, #1-33 Gillam, C SE SW, Section 33-29S-15W, Pratt County, Kansas

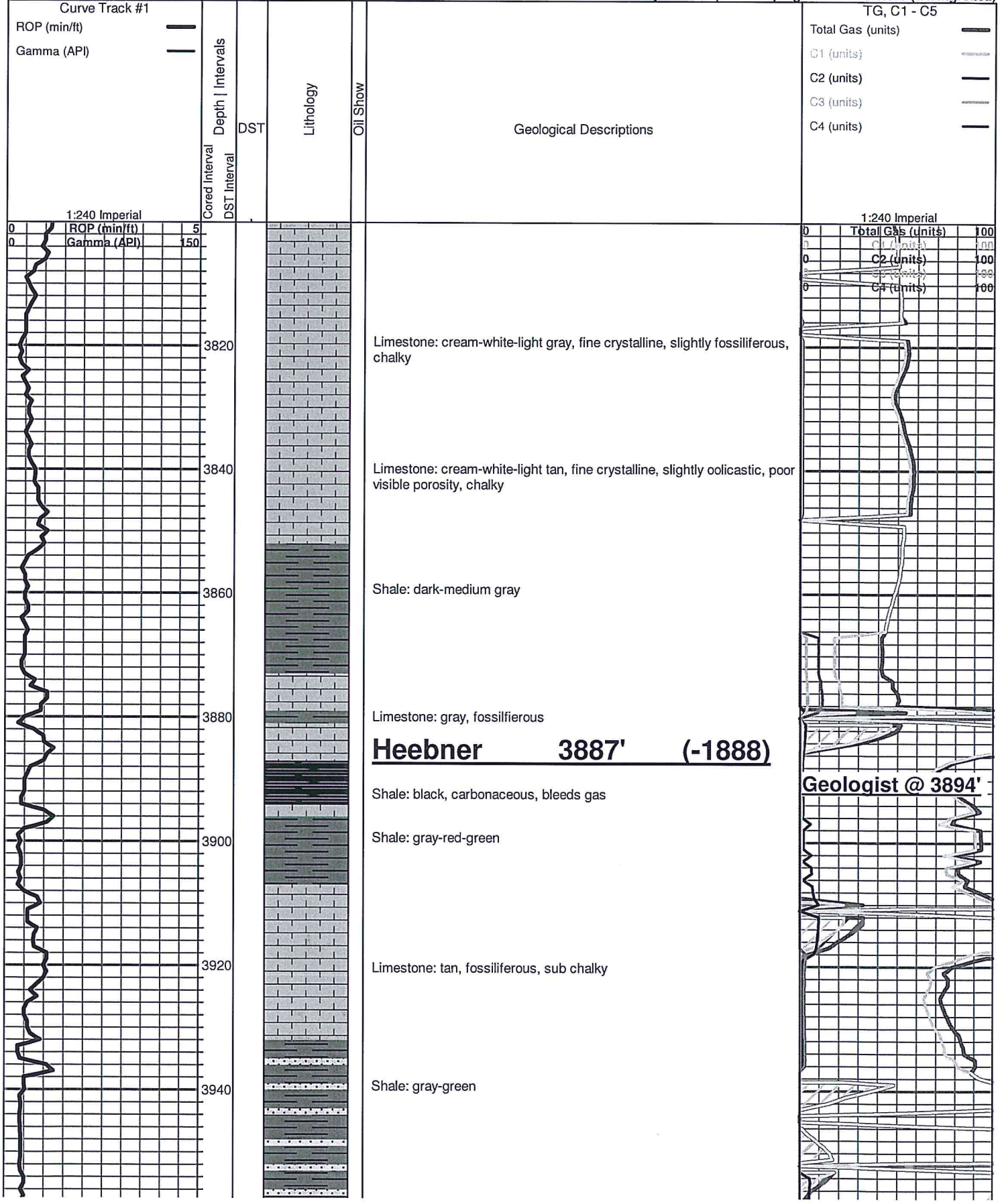
ROCK TYPES

 Cht	 Lmst fw7> shale, gry	 Carbon Sh
 Dolprim	 Ss	

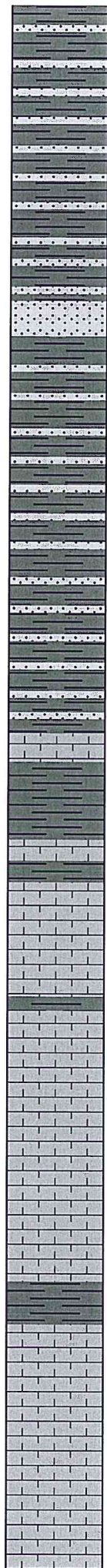
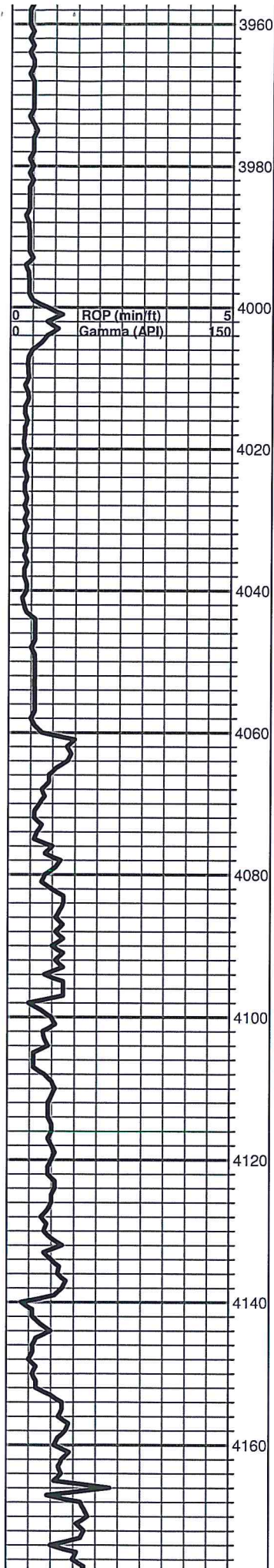
OTHER SYMBOLS

INTERVAL S	Oil Show	DST
------------	----------	-----

- Core
- Good Show
- Fair Show
- Poor Show
- Spotted or Trace
- Questionable Stn
- Dead Oil Stn
- Fluorescence
- * Gas
- DST Int
- DST alt
- Core
- || tail pipe



Geologist @ 3894'



Shale: as above, scattered cream-light gray sandstone, micaceous

Shale and sandstone: as above

Sandstone: cream, fine grained, poorly friable, no shows

Shale: gray with sandstone, cream, fine grained, no shows

Shale and sandstone: as above

Brown Lime 4060' (-2061)
Limestone: tan-brown, fine crystalline, dense

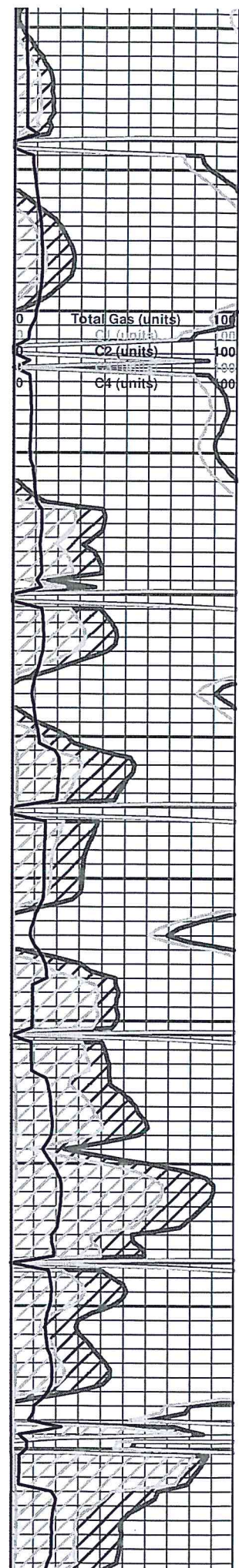
Lansing 4075' (-2076)
Limestone: gray, fine crystalline, dense, sub shaley

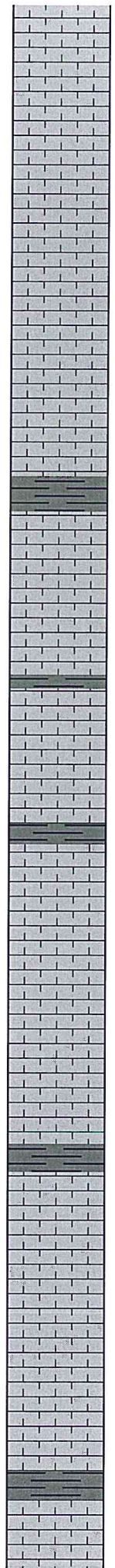
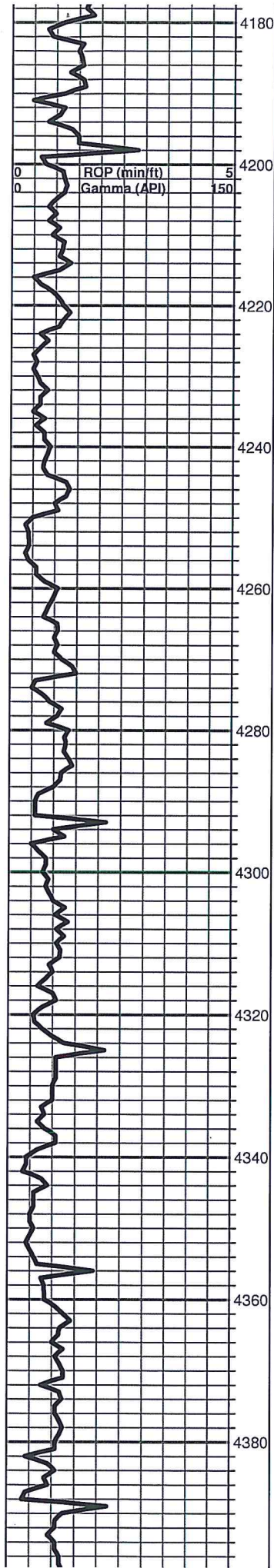
Limestone: cream-gray, fine crystalline, dense

Limestone: cream-white-light tan, fine crystalline, slightly fossiliferous, sub chalky

Shale: medium-dark gray

Limestone: light tan, fine crystalline, to slightly fossiliferous, dense





Limestone: cream-light tan, gray, fine crystalline, poor to no visible porosity, dense

Limestone: light tan-cream, fine crystalline, slightly fossiliferous, sub chalky

Limestone: cream-white-light tan, fine crystalline, really chalky, poor visible porosity

Limestone: more light-tan-cream, fine to slightly medium crystalline, poor visible porosity

Limestone: cream, fine crystalline, sub shaley

Limestone: cream-white-gray, fine crystalline, slightly fossiliferous, dense, sub shaley

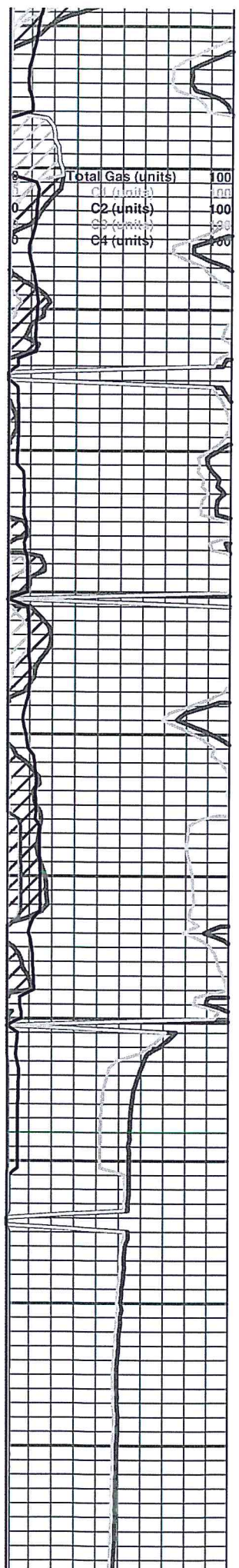
Limestone: cream-white-light tan, fine crystalline, poor visible porosity, sub chalky

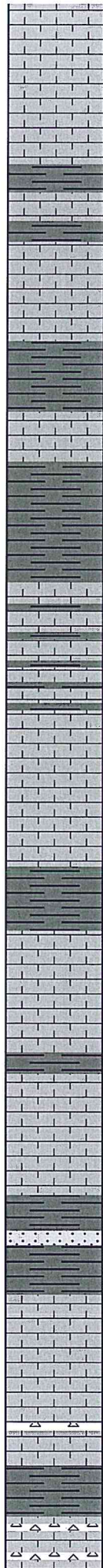
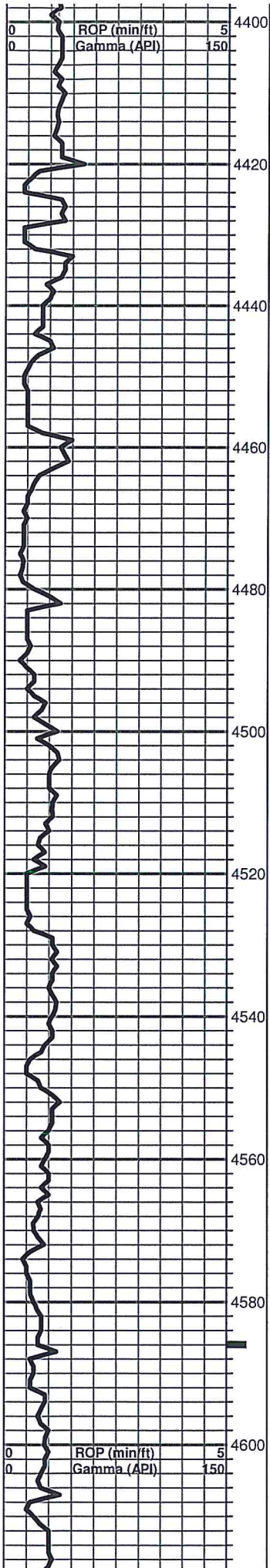
Limestone: medium tan-cream, fine crystalline, dense

Stark 4338' (-2339)
Shale: dark gray-green

Limestone: tan-cream, fine crystalline, dense, few pieces cream with visible porosity, no shows

Limestone: cream-tan, fine crystalline, slightly fossiliferous, dense





Limestone: cream-light tan, fine to micro-crystalline, no visible porosity, dense

Limestone: as above

Limestone: cream-white-light tan, fine crystalline, chalky, sub shaley

Shales: dark-medium gray, trace limestone, dense

B/KC 4462' (-2463)

Shale: gray-green-brown

Limestone: cream-gray, fine crystalline, fossiliferous, dense, sub shaley

Limestone: gray, fine crystalline, dense

Pawnee 4528' (-2529)

Limestone: tan-cream, fine crystalline, dense, some gray-green-black shale

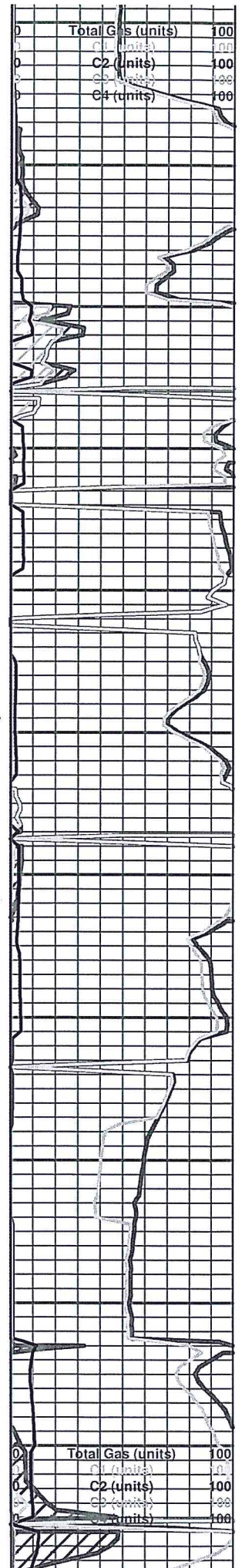
Limestone: cream-gray, fine crystalline, dense, sub shaley

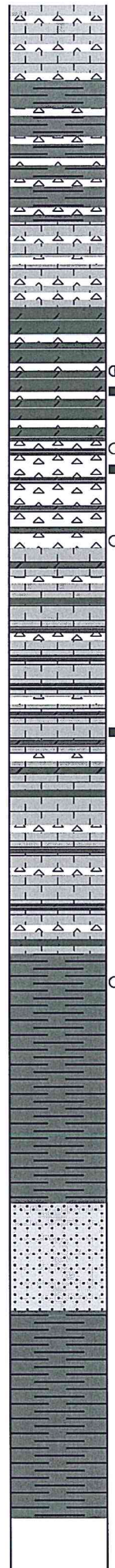
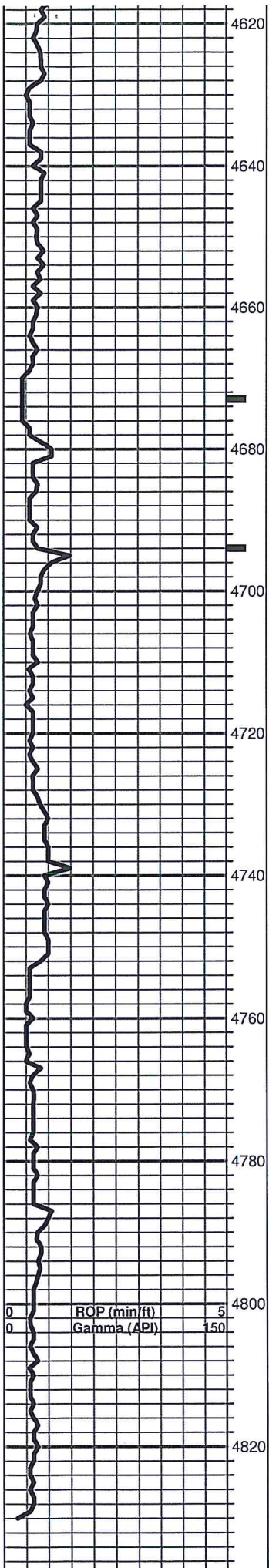
Cherokee 4565' (-2566)

Circulated at 4586' Shale: gray-green with few pieces sandstone, fine grained, poorly friable, some cream limestone, slightly fossiliferous, dull fluorescence, very slight show free oil

Limestone: cream, fine crystalline, chert: white-off white, vitreous, opaque, few pieces weathered, some porosity, black edge stain

Viola 4610' (-2611)





Limestone: pale green, fine crystalline, dense, scattered white-off white vitreous chert, no shows

Shales: red, some pieces scattered white chert, note samples wash red

Sample as above, some chalky white limestone, scattered white vitreous chert, no shows

Circulated at 4673' Chert/Dolomite: cream-white, weathered, slightly dolomitic, good visible porosity, some cream, dolomitic limestone, good odor, good fluorescence, slight show free oil

Sample as above

Circulated at 4694' Chert: cream-white, vitreous, opaque, sharp, dolomite: cream-gray, fine crystalline, sucrosic, soft, fair odor, medium to bright fluorescence, noted increase in cream-gray, sucrosic dolomite, very slight show free oil

Dolomitic limestone: cream-light gray, fine crystalline, finely sucrosic, increase in white, vitreous chert, faint odor, 10% fluorescence, decrease in show free oil

Limestone: cream-white, fine crystalline, dense, some dolomitic limestone, fine crystalline, increase in white vitreous chert, no shows

Simpson 4751' (-2752)

Few pieces turquoise, shale, mostly limestone, appears dolomitic, questionable show

Shale: turquoise

Simpson Sand 4786' (-2787)

Sandstone: cream, fine to medium grained, shale in pore space, no shows

Shale: pale green, turquoise blue, pyrite, sample carries lots of white-gray sandstone, micaceous, no shows

