

OPERATOR

Company: Charles N. Griffin
Address: PO Box 347
Pratt, KS 67124

Contact Geologist:
Contact Phone Nbr:

Well Name: #1 Mary
Location: Section 33-29S-15W
API: 15-151-22499
Pool:
State: Kansas

Field: Croft Ext.
Country: USA

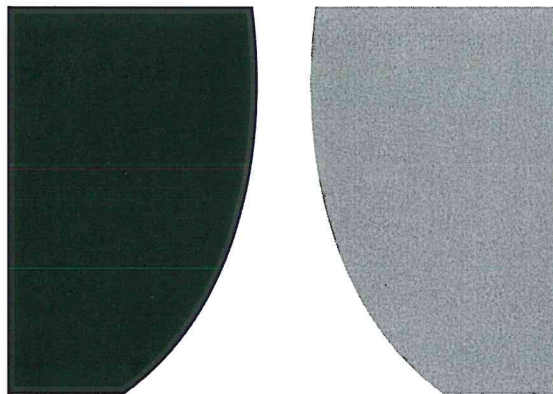
Scale 1:240 Imperial

Well Name: #1 Mary
Surface Location: Section 33-29S-15W
Bottom Location:
API: 15-151-22499
License Number:
Spud Date: 8/12/2019 Time: 3:00 PM
Region: Pratt County
Drilling Completed: 8/17/2019 Time: 11:00 AM
Surface Coordinates: 500' FNL & 1280' FWL
Bottom Hole Coordinates:
Ground Elevation: 1987.00ft
K.B. Elevation: 1999.00ft
Logged Interval: 3800.00ft To: 4850.00ft
Total Depth: 4850.00ft
Formation:
Drilling Fluid Type: Chemical (MudCo)

SURFACE CO-ORDINATES

Well Type: Vertical
Longitude:
Latitude:
N/S Co-ord: 500' FNL
E/W Co-ord: 1280' FWL

LOGGED BY



TERRATECH
ENERGY SERVICE, LLC

Company: TerraTech Energy Service LLC.
Address: 1632 S. West St. Suite 12
Wichita, KS 67208

Phone Nbr: 316-617-3959
Logged By: Geologist

Name: Bruce Reed

CONTRACTOR

Contractor:	Fossil Drilling		
Rig #:	3		
Rig Type:	mud rotary		
Spud Date:	8/12/2019	Time:	3:00 PM
TD Date:	8/17/2019	Time:	11:00 AM
Rig Release:	8/18/2019	Time:	2:45 PM

ELEVATIONS

K.B. Elevation:	1999.00ft	Ground Elevation:	1987.00ft
K.B. to Ground:	12.00ft		

NOTES

Surface Casing: 8-5/8" at 273'
 Production Casing: 4-1/2" at 4849'

Daily Penetration:

08/12/19	Spud @ 3:00 PM
08/13/19	345'
08/14/19	1795'
08/15/19	2937'
08/16/19	4070'
08/17/19	4748' RTD @ 11:00 AM
08/18/19	4850' Rig released @ 2:45 PM

FORMATION TOPS

Formation	Sample Top	Datum	Log Top	Datum	Comparison*
Heebner	3906'	-1907	3906'	-1907	+7
Brown Lime	4075'	-2076	4075'	-2076	+4
Lansing	4099'	-2100	4098'	-2099	-4
Stark	4350'	-2351	4352'	-2353	+3
Base KC	4477'	-2478	4480'	-2481	+6
Pawnee	4544'	-2545	4542'	-2543	+5
Cherokee	4579'	-2580	4580'	-2581	+4
Cherokee Sand	4603'	-2604	4605'	-2606	flat
Viola	4625'	-2626	4625'	-2626	-4
Simpson	4766'	-2767	4766'	-2767	+13
Simpson Sand	4802'	-2803	4800'	-2801	+13

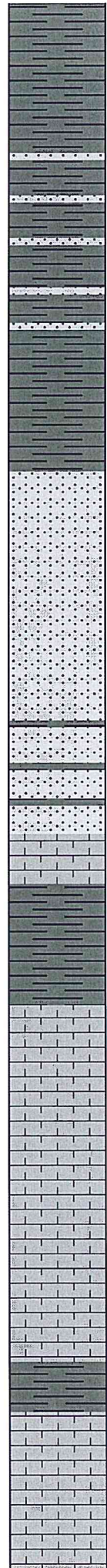
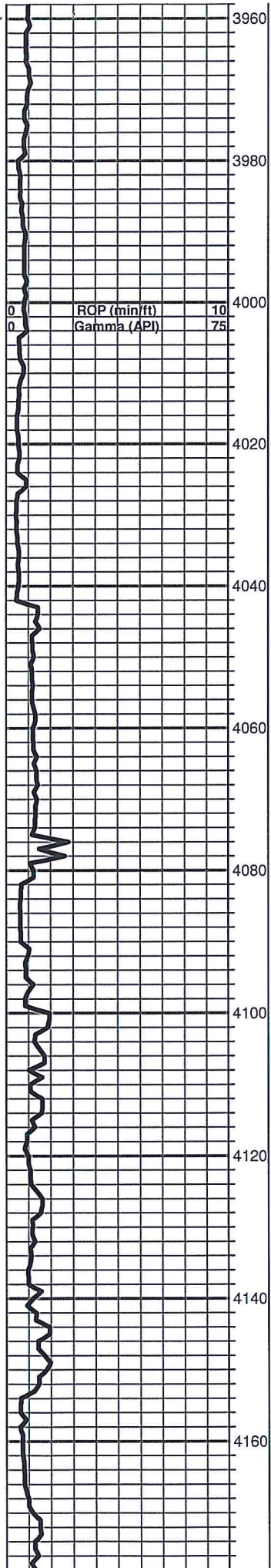
*Charles N. Griffin, #5 Addie, 330' FSL and 1370' FWL, Section 28-29S-15W
 Pratt County, Kansas

ROCK TYPES

 Cht	 Lmst fw7> shale, gry	 Carbon Sh
 Dolprim	 shale, gry	 Ss

OTHER SYMBOLS

INTERVALS Oil Show DST



Shale: gray, slightly sandy

Shale: gray-light gray, slightly sandy

Shale: gray, trace cream sandstone

Shale: gray

Sandstone: cream-gray, fine to very fine grained, sub shaley

Sandstone: cream, fine grained, micaceous, sub shaley

Brown Lime 4075' (-2076)

Limestone: tan-brown, fine crystalline, dense

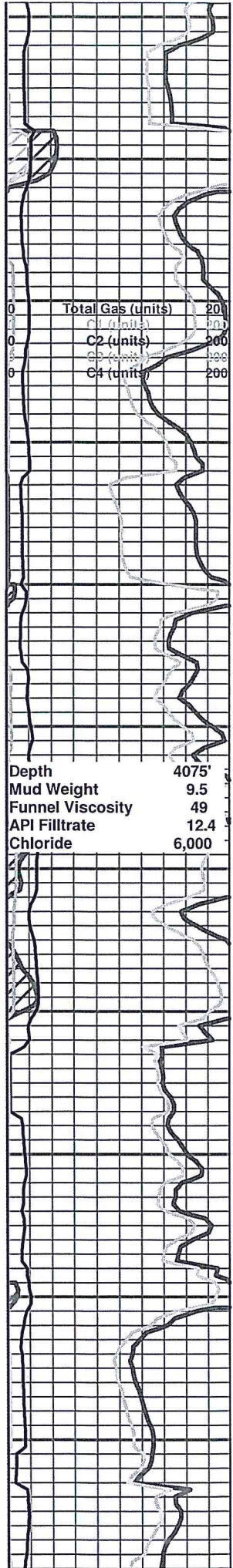
Lansing 4099' (-2100)

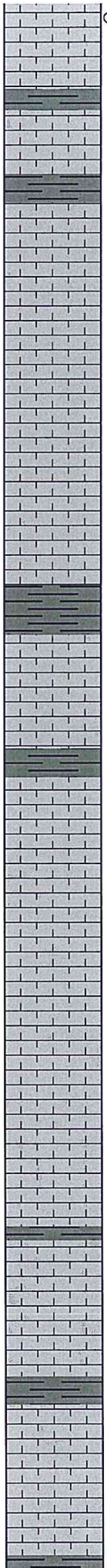
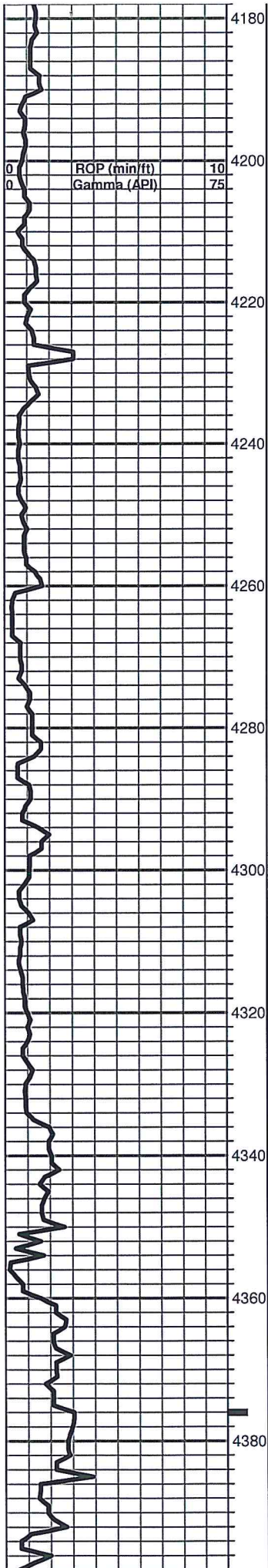
Limestone: gray-tan-brown, fine crystalline to fossiliferous, poor to no visible porosity, dense

Limestone: cream-brown-white, fine crystalline, slight fossiliferous (pelletal), sub chalky

Limestone: cream-white-light brown, fine crystalline, slightly fossiliferous, sub chalky

Limestone: cream-white-light gray, fine to slightly medium crystalline





Limestone: cream-gray-brown, fine crystalline, rare oolitic piece, sub chalky, 1 piece stain, very faint odor

Limestone: cream-light gray, fine to slightly medium crystalline, rare visible porosity, sub chalky

Limestone: light-tan, fossiliferous, few pieces oolitic, poor to fair visible porosity

Limestone: cream-light tan-gray, fine crystalline, some visible porosity

Limestone: cream-light tan-white, fine crystalline, very slightly fossiliferous

Limestone: cream-light tan, fine crystalline, few pieces pin head porosity

Limestone: cream-tan, fine crystalline, poor to no visible porosity, dense, sub chalky

Limestone: cream-light brown, fine crystalline to fossiliferous, few pieces appear sandy, trace chalky

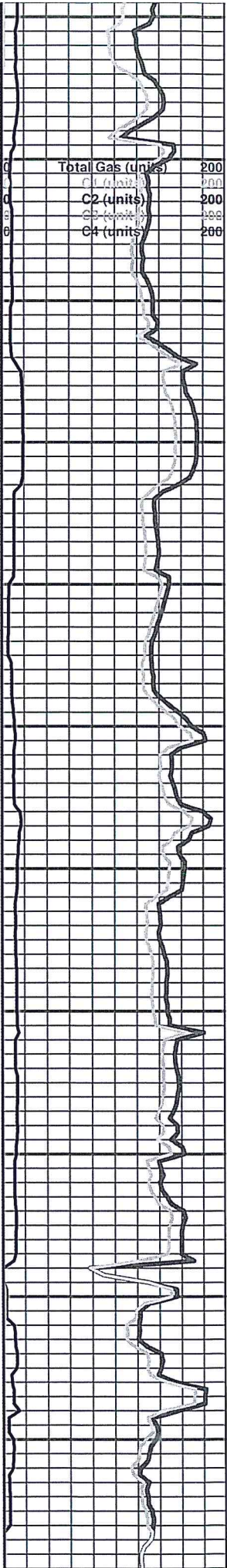
Limestone: cream-white-brown, fine crystalline, dense

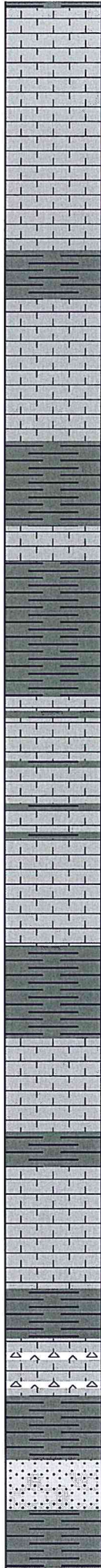
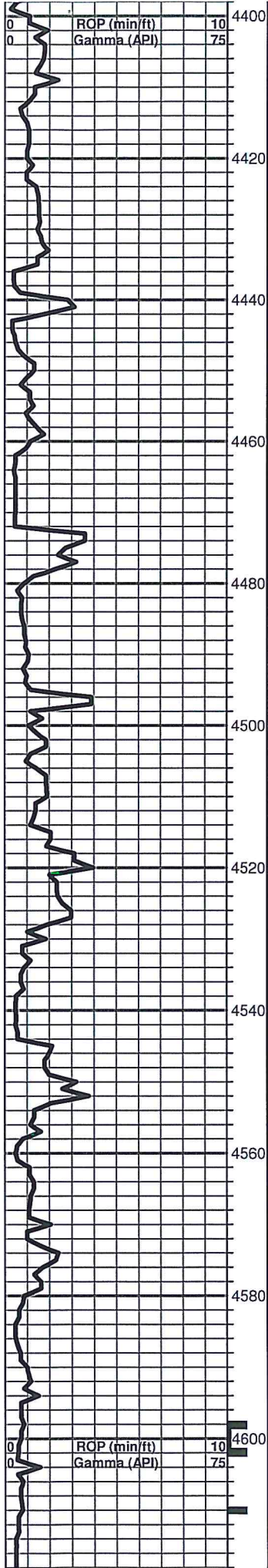
Stark 4350' (-2351)

Limestone: cream, fine crystalline, few pieces fossiliferous, few pieces dark gray black shale

Circulated at 4376' Limestone: cream-white, fine crystalline, rare oolitic porosity, sub chalky, no shows

Limestone: cream-light tan, fine crystalline, dense





Shale: gray-red

Limestone: cream, fine to slightly medium crystalline, trace fossiliferous, sub chalky

Shale: medium gray-green, some cream fossiliferous limestone

Limestone: gray, fine crystalline, dense

B/KC 4477' (-2478)

Shale: light gray-green-red, slightly silty

Shale: gray-light gray, slightly silty with some limestone: cream, fine crystalline, dense

Limestone: cream-tan-light brown, fine crystalline, very slightly fossiliferous, sub chalky

Shale: medium gray, soft

Pawnee 4544' (-2545)

Shale: gray-green-brown, some limestone: cream-tan, very dense

Cherokee 4579' (-2580)

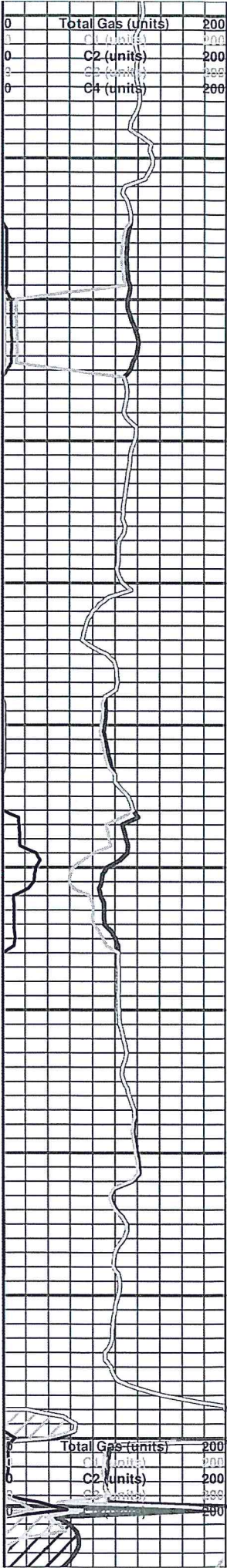
Shale: dark gray, Limestone: cream, fine crystalline, some vugular porosity, no odor, few pieces show free oil

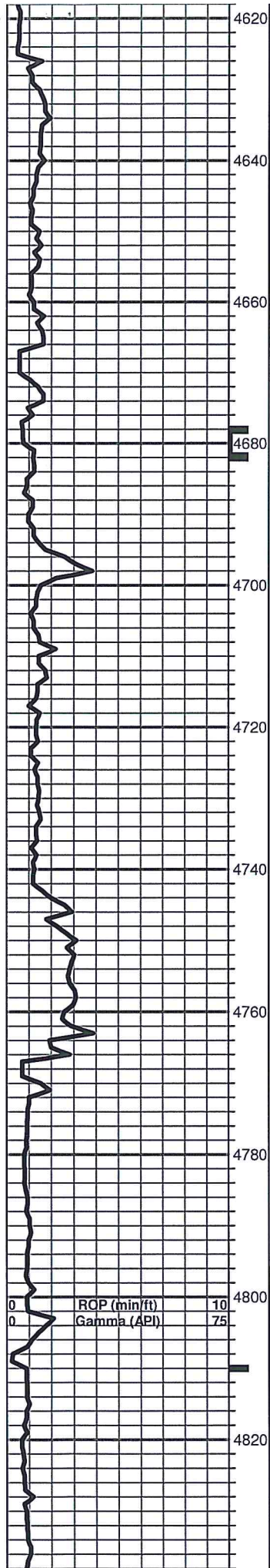
Circulated at 4600' Limestone: cream-gray, fine crystalline, fossiliferous with vari-colored shale and vitreous chert, trace tripolitic piece, one piece fossiliferous (oolitic) limestone with show free oil

Cherokee Sand 4603' (-2604)

Circulated at 4610' Sandstone: light tan, fine grained, sub rounded, good friability, fair odor in fresh, fair show free oil and fluorescence

Shale: gray, samples carry sandstone: light brown, moderatley friable, fair show free oil





Viola 4625' (-2626)

Cherty dolomite: cream, fine crystalline, sucrosic, some fossiliferous chert, some chalky white material, no shows

Cherty dolomite: cream-white, fine crystalline, sucrosic, poor visible porosity, some chalky material, both vitreous/weathered chert with black stain

Circulated at 4680' Mostly white chert with some dolomite: cream, pale green, sucrosic, some rare visible porosity, decrease in chalky material, no shows

Cherty dolomite: white, fine crystalline, sucrosic, lots of white vitreous chert with few pieces good weathered porosity, questionable odor, slight show free oil, moderate fluorescence

Circulated at 4710' Cherty dolomite: cream-white, chalky, some visible porosity, chert: cream-white, vitreous, few pieces edge weathering, decrease in shows, scattered dull yellow fluorescence

Cherty dolomitic limestone: sub sucrosic, abundant white chert

Cherty dolomite: limestone: cream-gray, fine crystalline, lots of white vitreous chert

Simpson 4766' (-2767)

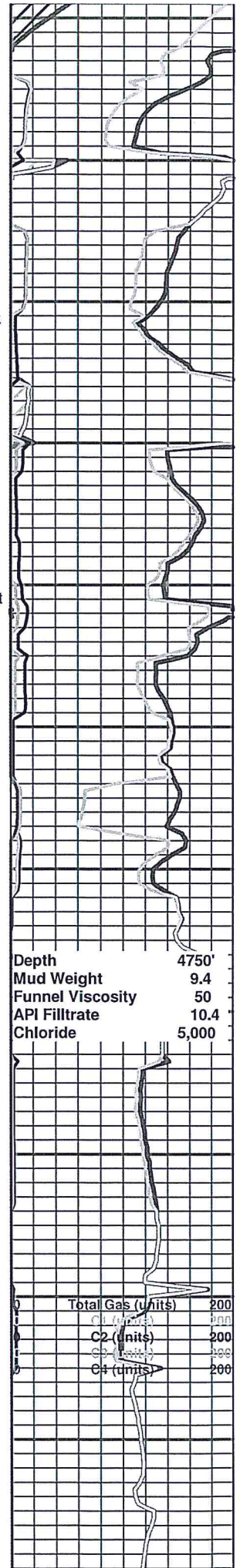
Flood Simpson type shale, very rare piece sandstone, no shows

Shale: as above

Simpson Sand 4802' (-2803)

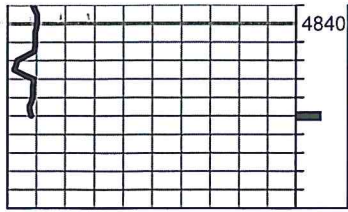
Circulated at 4810' Sandstone: white-gray, fine to medium grained, moderately sorted, sub rounded, glauconite inclusions, flakey dead oil, no fluorescence

Shale: gray-green-blue



Depth	4750'
Mud Weight	9.4
Funnel Viscosity	50
API Filtrate	10.4
Chloride	5,000

Total Gas (Units)	200
C1 (Units)	200
C2 (Units)	200
C3 (Units)	200
C4 (Units)	200



Shale: gray-green-blue

Circulated at 4850' Mostly Simpson type shale

