

Randall Kilian Corporation

Geologist



**Certified Petroleum  
Geologist #3351  
License #224**

3951 Eveningglow Way  
Castle Rock, CO 80104

Phone: 720-733-0420

Cell: 785-635-1349

E-mail: rkgeo53@hotmail.com

## GEOLOGIST'S WELL REPORT

COMPANY AINSWORTH OPERATING CO. (6030)

WELL Stinemetz #1

FIELD Red Sun West

LOCATION (legal) NE NW SW NE

(footages) 1485' FNL & 2120' FEL

Section 33 TWP 6S RGE 22W

(Map) 3 mi E & 7½ mi N of Hill City

COUNTY Graham STATE Kansas

ELEVATION: 2321' K.B., 2313' G.L.

Depths measured from Kelly Bushing

A. P. I. NUMBER 15-065-24168

GEOLOGY BY Randall Kilian

# PERTINENT WELL DATA

CONTRACTOR Discovery Drilling (31548)

RIG #4 HYDRAULICS D-375 6x14x60  
(Galen Gaschler TP)

DRILL PIPE 4 1/2" X-H COLLARS 6 1/4 x 2 1/4 17 (555')

CASING: SURFACE 8 5/8" @ 263.5' w/ 200 sx 80/20 Pos

PRODUCTION \_\_\_\_\_

DRILLING FLUID. COMPANY Andy's Mud & Chemical Co.  
(Aaron Blew)

TYPE: Chemical-Pac

REMARKS: Full service

DRILL STEM TESTS: COMPANY Trilobite Testing, Inc.  
(Ryan Nichols)

NUMBER OF TESTS Two (2)

ELECTIC LOGS: COMPANY None

DETAIL (5") \_\_\_\_\_

TYPE \_\_\_\_\_

DRILLING TIME FROM 3300' TO RTD

SAMPLE TIME FROM 3300' TO RTD

SUPERVISION FROM 3300' TO RTD

VERTICAL DEVIATION 1/2°@ 264', 3/4°@ 3630',

PLUGGING REPORT 50 sx @ 2000', 100 sx @ 1175', 50 Sx  
@ 325', 10 sx @ 40', Rat 30 Sx, MH 15 Sx: 255 Sx

RESERVE PIT 750 bbls, Chl. 14,500 Ca. 460



# DRILL STEM TESTS

NO	INTERVAL	IFP/TIME	ISIP/TIME	FFP/TIME	FSIP/TIME	IHP/FHP	RECOVERY
1	LKc C-D 3591- 3630'	20# 34# 5"	533# 60"	35# 136# 60"	514# 90"	1802# 1625#	1' Oil 19' O&M, C, Wtr 250' M, Wtr Chl 64k
2	LKc H-L 3677- 3770'	31# 33# 5"	1106# 30"	34# 34# 20"	640# 20"	1789# 1728#	15' O, C, Mud 45% Oil
3							
4							
5							
6							
7							
8							

Displaced

LCM 2 1/2#

LCM 2#

## MUD RECORD

CHK	DEPTH	WT	VIS	FIL	CHL	YP
1	3150'					
2	3340'	8.5	60			
3	3410'	8.6	57			
4	3504'	8.8	61	7.6	750	14
5	3661'	8.9	55	7.6	750	12
6	3730'	9.2	52			
7						
8						
9						
10						
11						

## BIT RECORD

NO	SIZE	MAKE	TYPE	DEPTH/OUT	FEET	HOURS
1	12 1/4"	JZ	HA10TC	264'	264'	3 3/4
2	7 7/8"	HTCO	GX20C	3630'	3366'	62 3/4
3	7 7/8"	HTCO	GX20C	3770'	140'	8
4						
5						
6						
7						
8						



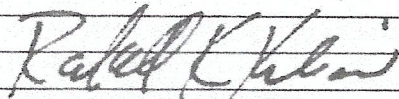
# SUMMARY

The Stinemetz #1 well was drilled with Discovery Drilling tools rig #4 beginning September 16, 2019 and drilling was completed September 22, 2019.

The drill site was a long NE offset to the discovery well on the same 3-D seismic closure. The well ran 2' low structurally and therefore, tested mainly water on DST #1. The lower LKc was covered on DST #2 with negative results also.

Based upon all data, no electric log was run and the well plugged as a dry hole.

Respectfully,



Randall Kilian

DRILLING TIME (MIN/FT)

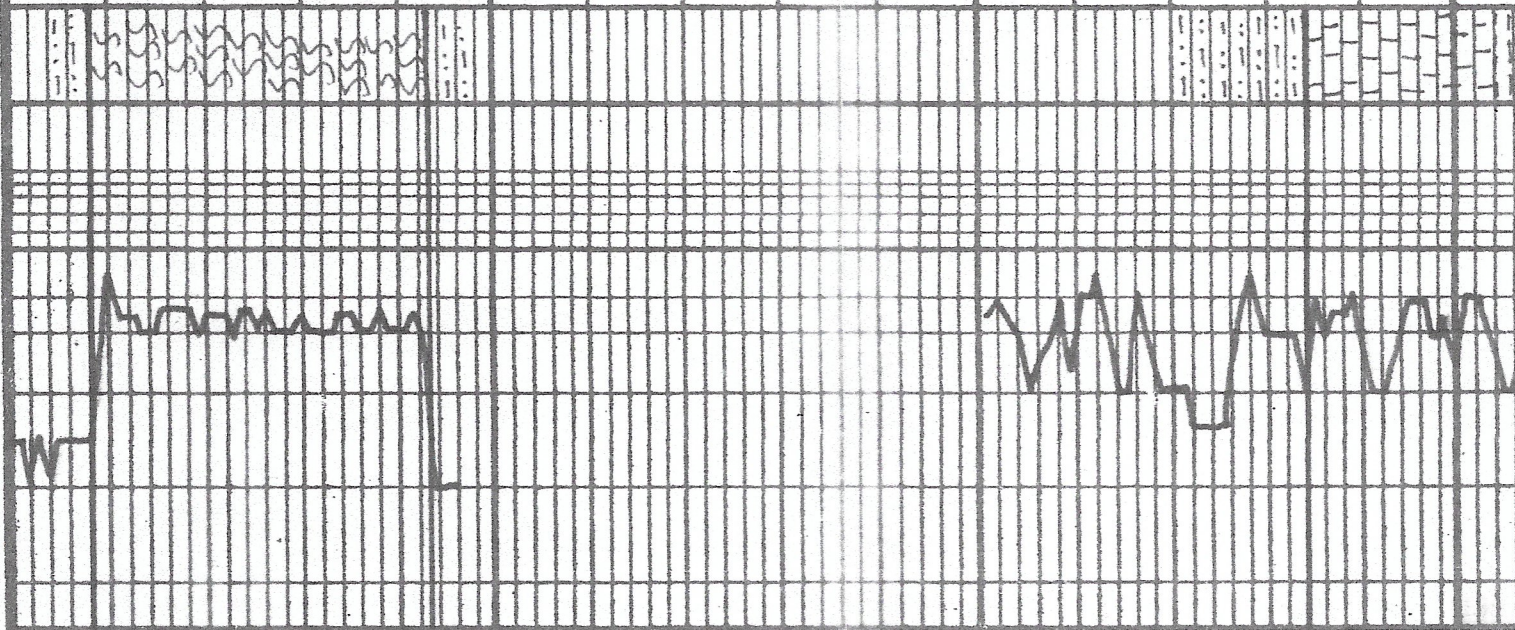
1/2 1 2 3 4 5678910

POOR  
FAIR  
GOOD  
DST

LITHOLOGY (LAGGED)

REMARKS

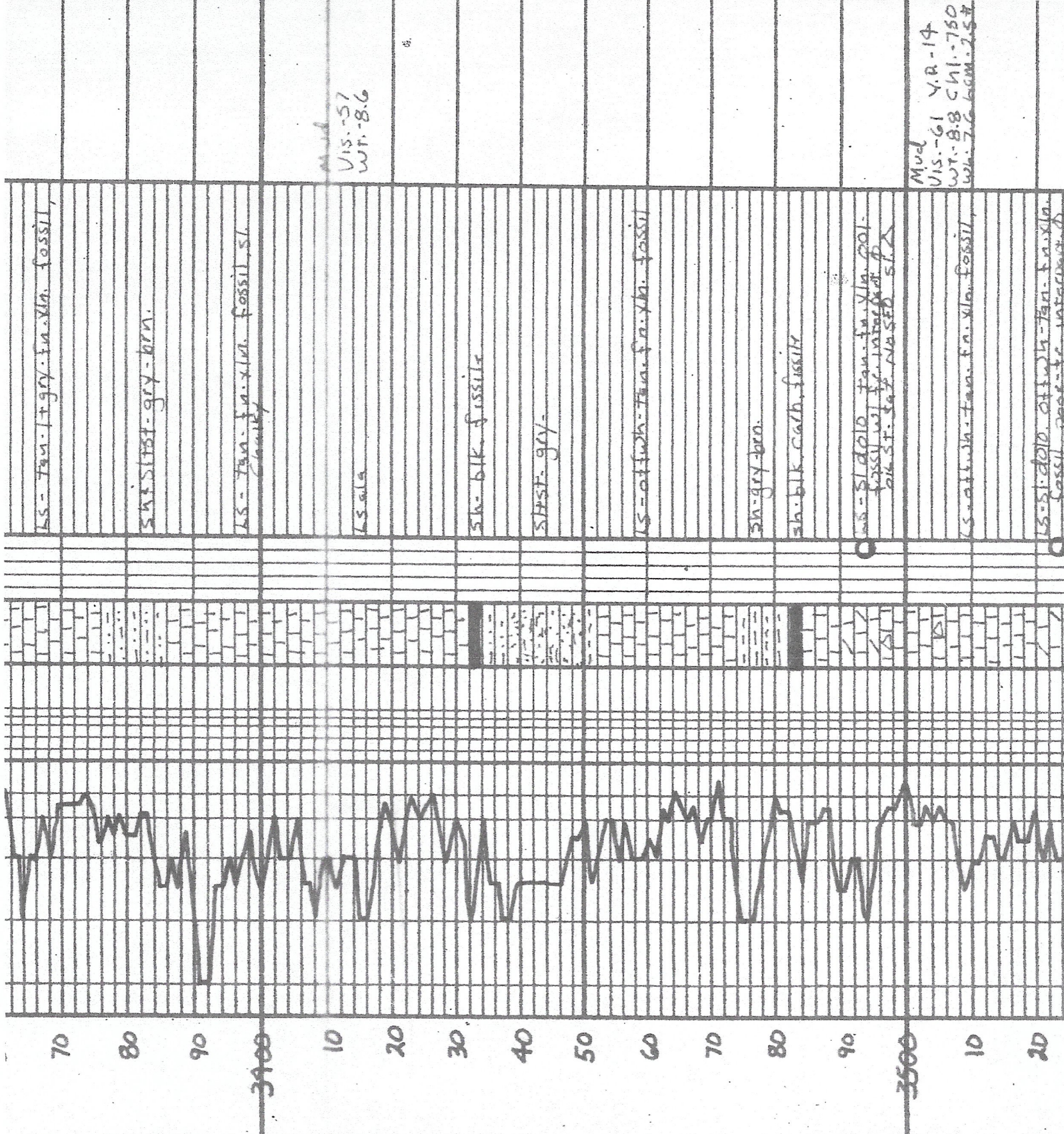
ASH. 80  
 90  
 2000  
 Base 10  
 20  
 3300  
 10  
 20  
 Topoka 30  
 40  
 50



sh. siltst. gray  
 ls. gray. fossil. fossil.  
 sh. dark gray

Displaced 3150'

Mod.  
Vis. - 60  
WT. 8.5



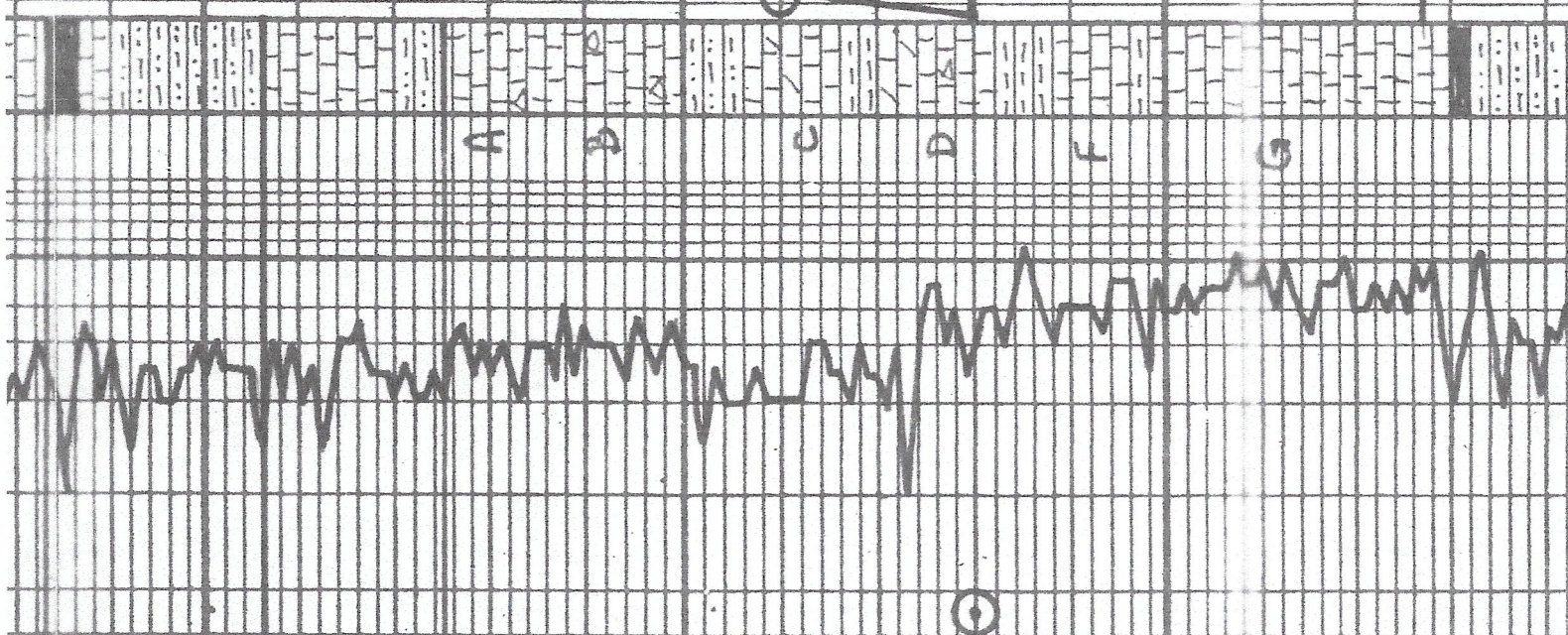
Mud  
Vis. - 57  
WT. - 8.6

Mud  
Vis. - 61  
WT. - 8.8  
V.R. - 14  
CHI. - 760  
W. - 7.6  
GCM. - 2.57

70 80 90 3400 10 20 30 40 50 60 70 80 90 3500 10 20



11h. Sh 30  
 40  
 50  
 60  
 70  
 80  
 90  
 3600  
 10  
 20  
 30  
 40  
 50  
 60  
 70  
 80  
 90



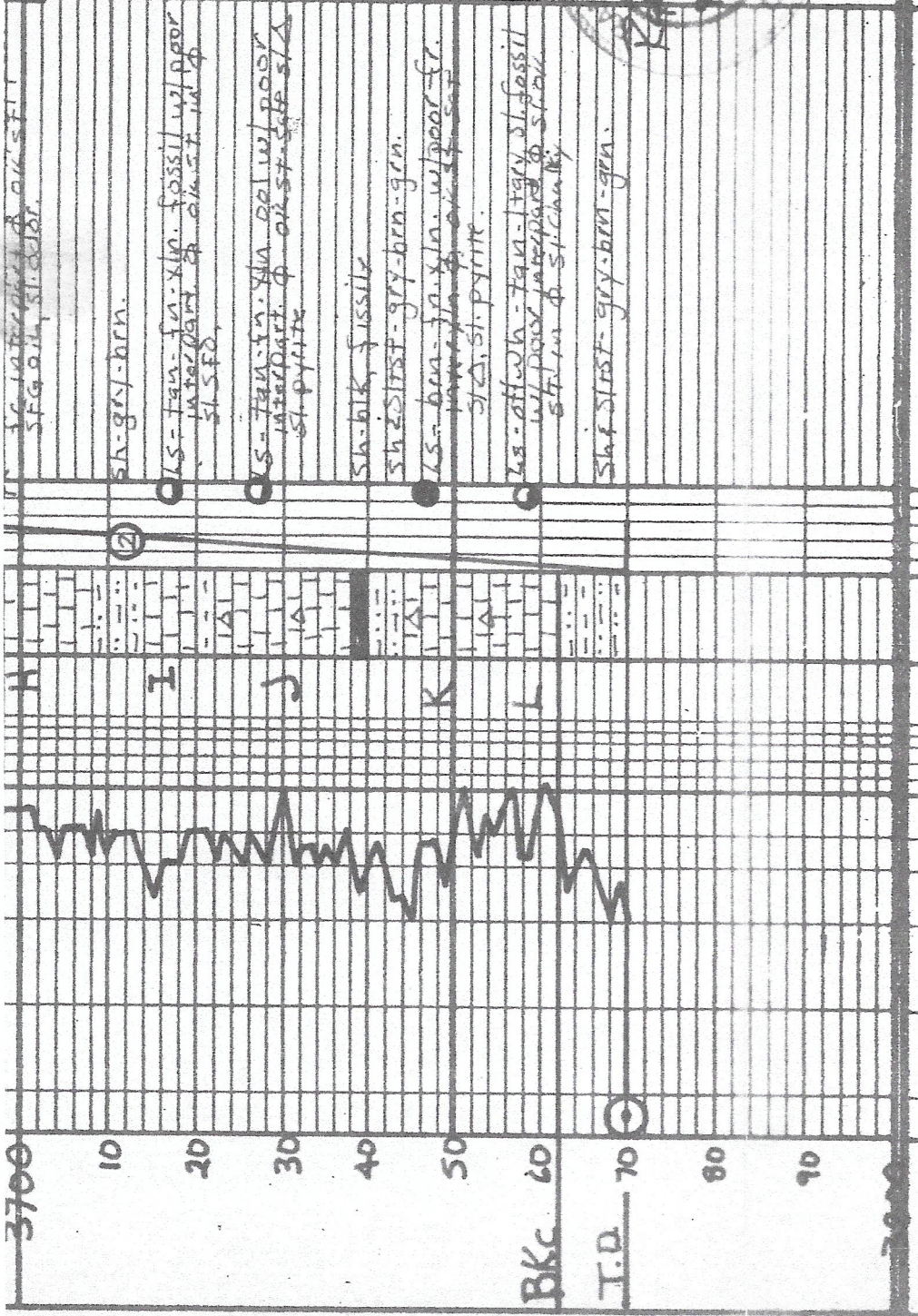
Sh. blk. Carb. fissile  
 Sh. siltst. gry-grn-brn.  
 LS-offwh-fan-fgry-fa. xln  
 sh. ool. silt. fossil w/ poor  
 interpart. p. AS.  
 Sh. siltst. gry-grn-brn.  
 LS-offwh-fan-fgry-ool w/  
 fa. xln. fine, sh. silt. st. cherty  
 Sh. siltst. gry-brn-grn.  
 LS-silt. ool. offwh-fan-fgry-fa. xln  
 fossil w/ sh. interpart & lugg  
 from st. sed. fr. ool. sh.  
 sh. gn. gm. brn.  
 LS-silt. ool. offwh-fan-fgry-fa. xln. fossil  
 w/ ool. fr. interpart & lugg  
 sh. silt. ool. sh. sed.  
 sh. ool. sh.  
 Sh. gry-brn.  
 LS-offwh-fan-fa. xln. silt. fossil  
 sh. gry  
 LS-offwh-fan-fa. xln. silt. ool.  
 ss. silt.  
 Sh. blk. Carb.  
 Sh. siltst. gry-brn-red

**DST# 146C-1**  
 35913630  
 5" 60" 60" 90"  
 1' oic  
 19' of Mc. wtr  
 250' M. wtr  
 FP. 20-34, 36-136#  
 S.I.P. 533-514#  
 dev 9/4

**DST# 246C H-L**  
 3677-3770  
 5" 30" 20" 20"  
 15' M. wtr

Mud  
 US. -55 Y.R. -12  
 WT. -8.9 GM. -750  
 Wh. -7.6 GM. -2#

S.P. 1106-640



Mud  
U.S. - 52  
WT. - 92

3700  
10  
20  
30  
40  
50  
60  
70  
80  
90  
BKC  
T.D. 70