

KANSAS CORPORATION COMMISSION
OIL & GAS CONSERVATION DIVISION

TEMPORARY ABANDONMENT WELL APPLICATION

OPERATOR: License#
Name:
Address 1:
Address 2:
City: State: Zip:
Contact Person:
Phone:
Contact Person Email:
Field Contact Person:
Field Contact Person Phone:

API No. 15-
Spot Description:
Sec. Twp. S. R.
GPS Location: Lat: Long:
Datum: NAD27 NAD83 WGS84
County: Elevation:
Lease Name: Well #:
Well Type: Oil Gas OG WSW Other:
SWD Permit #: ENHR Permit #:
Gas Storage Permit #:
Spud Date: Date Shut-In:

Table with 7 columns: Conductor, Surface, Production, Intermediate, Liner, Tubing. Rows include Size, Setting Depth, Amount of Cement, Top of Cement, Bottom of Cement.

Casing Fluid Level from Surface: How Determined? Date:
Casing Squeeze(s): to w / sacks of cement, to w / sacks of cement. Date:
Do you have a valid Oil & Gas Lease? Yes No
Depth and Type: Junk in Hole at Tools in Hole at Casing Leaks: Yes No Depth of casing leak(s):
Type Completion: ALT. I ALT. II Depth of: DV Tool: w / sacks of cement Port Collar: w / sack of cement
Packer Type: Size: Inch Set at: Feet
Total Depth: Plug Back Depth: Plug Back Method:

Geological Data:

Table with 4 columns: Formation Name, Formation Top, Formation Base, Completion Information. Rows 1 and 2.

UNDER PENALTY OF PERJURY I HEREBY ATTEST THAT THE INFORMATION CONTAINED HEREIN IS TRUE AND CORRECT TO THE BEST OF MY KNOWLEDGE

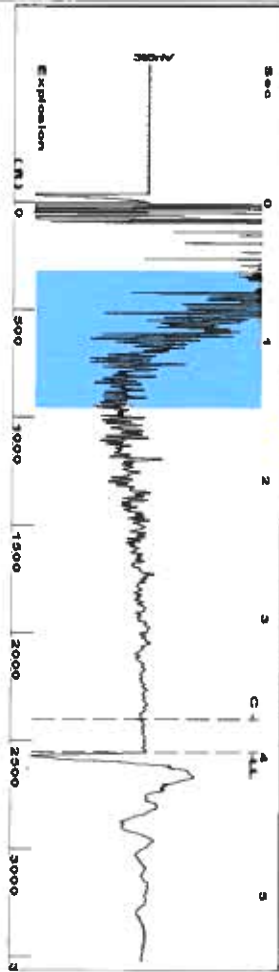
Submitted Electronically

Do NOT Write in This Space - KCC USE ONLY
Date Tested: Results: Date Plugged: Date Repaired: Date Put Back in Service:
Review Completed by: Comments:
TA Approved: Yes Denied Date:

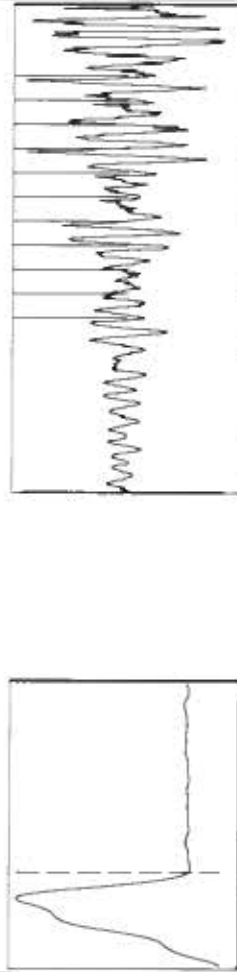
Mail to the Appropriate KCC Conservation Office:

Table with 2 columns: Office Address, Phone. Rows for District Office #1, #2, #3, #4.

Group: T.A.D Well: Stever c-3 (acquired on: 09/30/21 10:57:49 )



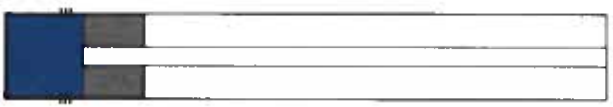
Filter Type High Pass  
Manual Acoustic Veloc 1275.65 ft/s  
Automatic Collar Count Yes  
Manual JTS/sec 20.1207  
Time 3.97 sec  
Joints 80.5041 Jts  
Depth 2551.98 ft



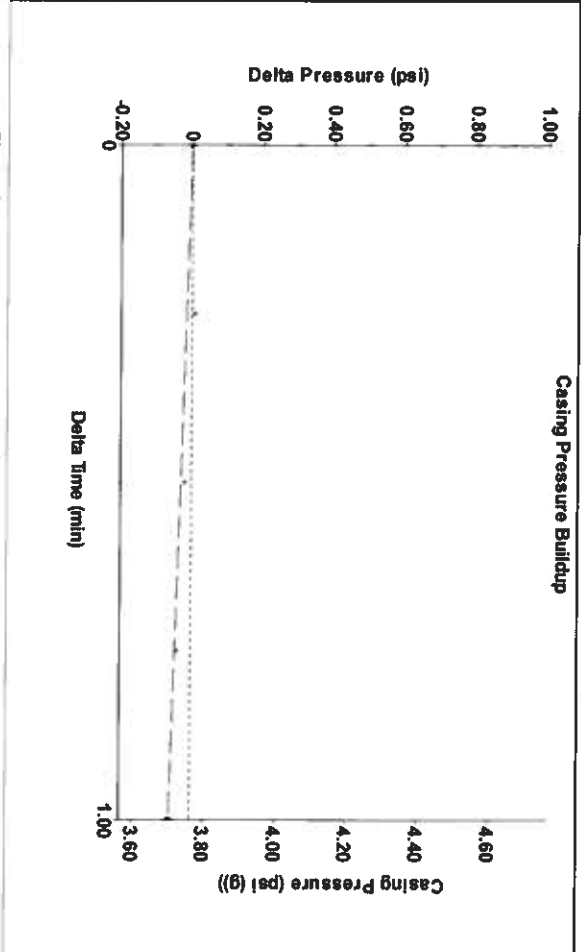
**Analysis Method: Automatic**

Group: T.A.D Well: Stever c-3 (acquired on: 09/30/21 10:57:49 )

<b>Production</b>	<b>Potential</b>	<b>Casing Pressure</b>	<b>Producing</b>
Current Oil -*- Water -*- Gas -*-	-*- BBL/D -*- BBL/D -*- Misc/D	3.8 psi (g) Casing Pressure Buildup -0.060 psi 1.00 min Gas/Liquid Interface Pressure 4.9 psi (g)	Annular Gas Flow 0 Misc/D % Liquid 100 % Liquid Stream Below Tubing Oil 0 % Water 100 %
IPR Method PBHP/SBHP Production Efficiency 0.0	Vogel -*- Liqud Level Depth 2551.98 ft	Liqud Level Depth 2551.98 ft Pump Intake Depth 2945.00 ft Formation Depth 3054.00 ft	Liqud Below Tubing 100 % Pump Intake 138.1 psi (g) Producing BHP 187.6 psi (g) Static BHP -*- psi (g)
Oil 40 deg API Water 1.05 Sp.Gr.H2O Gas 0.72 Sp.Gr.AIR			
Acoustic Velocity 1285.63 ft/s			
Formation Submergence			
Total Gaseous Liquid Column HT (TV/D)	393 ft		
Equivalent Gas Free Liquid HT (TV/D)	393 ft		
Acoustic Test			

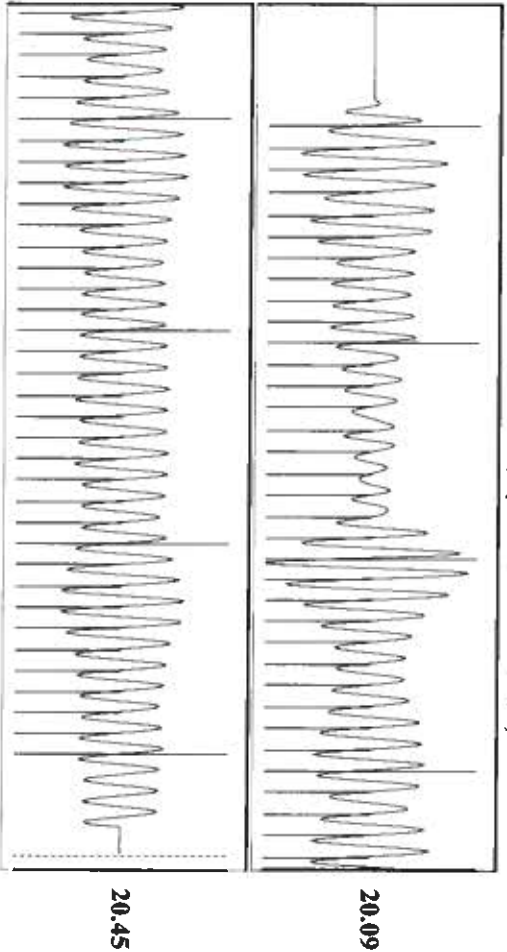


Group: T.A.D Well: Stever c-3 (acquired on: 09/30/21 10:57:49 )



Change in Pressure -0.06 psi  
Change in Time 1.00 min  
PT114654  
Range  
0 - ? psi

Group: T.A.D Well: Stever c-3 (acquired on: 09/30/21 10:57:49 )



Acoustic Velocity 1285.63 ft/s  
Joints Per Second 20.2781 jts/sec  
Depth to liquid level 2551.98 ft  
Automatic Collar Count Yes

Joints counted 70  
Joints to liquid level 80.5041  
Filter Width 18.1207  
Time to 1st Collar 0.28

Conservation Division  
District Office No. 1  
210 E. Frontview, Suite A  
Dodge City, KS 67801



Phone: 620-682-7933  
<http://kcc.ks.gov/>

Andrew J. French, Chairperson  
Dwight D. Keen, Commissioner  
Susan K. Duffy, Commissioner

Laura Kelly, Governor

October 07, 2021

Katherine McClurkan  
Merit Energy Company, LLC  
13727 Noel Road, Suite 1200  
Dallas, TX 75240-7362

Re: Temporary Abandonment  
API 15-067-21159-00-01  
Steve C 3  
NE/4 Sec.01-28S-36W  
Grant County, Kansas

Dear Katherine McClurkan:

"Your temporary abandonment (TA) application for the well listed above has been approved. In accordance with K.A.R. 82-3-111 the TA status of this well will expire 10/07/2022.

- \* If you return this well to service or plug it, please notify the District Office.
- \* If you sell this well you are required to file a Transfer of Operator form, T-1.
- \* If the well will remain temporarily abandoned, you must submit a new TA application, CP-111, before 10/07/2022.

You may contact me at the number above if you have questions.

Very truly yours,

Michael Maier"