

KANSAS CORPORATION COMMISSION
OIL & GAS CONSERVATION DIVISION

TEMPORARY ABANDONMENT WELL APPLICATION

OPERATOR: License# _____
 Name: _____
 Address 1: _____
 Address 2: _____
 City: _____ State: _____ Zip: _____ + _____
 Contact Person: _____
 Phone:(_____) _____
 Contact Person Email: _____
 Field Contact Person: _____
 Field Contact Person Phone: (_____) _____

API No. 15- _____
 Spot Description: _____
 _____ - _____ - _____ - _____ Sec. _____ Twp. _____ S. R. _____ E W
 _____ feet from N / S Line of Section
 _____ feet from E / W Line of Section
 GPS Location: Lat: _____, Long: _____
(e.g. xx.xxxxx) (e.g. -xxx.xxxxx)
 Datum: NAD27 NAD83 WGS84
 County: _____ Elevation: _____ GL KB
 Lease Name: _____ Well #: _____
 Well Type: (check one) Oil Gas OG WSW Other: _____
 SWD Permit #: _____ ENHR Permit #: _____
 Gas Storage Permit #: _____
 Spud Date: _____ Date Shut-In: _____

	Conductor	Surface	Production	Intermediate	Liner	Tubing
Size						
Setting Depth						
Amount of Cement						
Top of Cement						
Bottom of Cement						

Casing Fluid Level from Surface: _____ How Determined? _____ Date: _____
 Casing Squeeze(s): _____ to _____ w / _____ sacks of cement, _____ to _____ w / _____ sacks of cement. Date: _____
(top) (bottom) (top) (bottom)
 Do you have a valid Oil & Gas Lease? Yes No
 Depth and Type: Junk in Hole at _____ Tools in Hole at _____ Casing Leaks: Yes No Depth of casing leak(s): _____
(depth) (depth)
 Type Completion: ALT. I ALT. II Depth of: DV Tool: _____ w / _____ sacks of cement Port Collar: _____ w / _____ sack of cement
(depth) (depth)
 Packer Type: _____ Size: _____ Inch Set at: _____ Feet
 Total Depth: _____ Plug Back Depth: _____ Plug Back Method: _____

Geological Date:

Formation Name	Formation Top	Formation Base	Completion Information
1. _____	At: _____	to _____ Feet	Perforation Interval _____ to _____ Feet or Open Hole Interval _____ to _____ Feet
2. _____	At: _____	to _____ Feet	Perforation Interval _____ to _____ Feet or Open Hole Interval _____ to _____ Feet

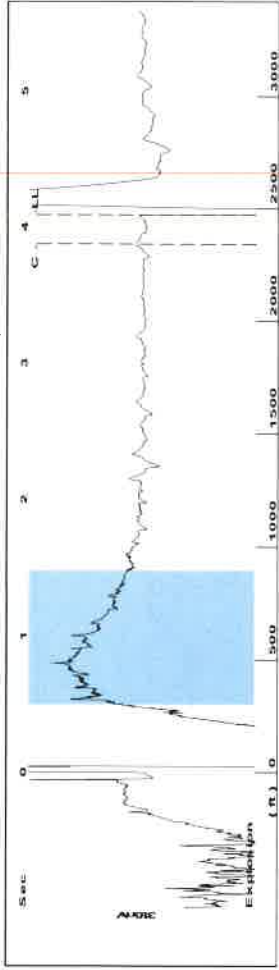
UNDER PENALTY OF PERJURY I HEREBY ATTEST THAT THE INFORMATION CONTAINED HEREIN IS TRUE AND CORRECT TO THE BEST OF MY KNOWLEDGE

Submitted Electronically

Do NOT Write in This Space - KCC USE ONLY	Date Tested: _____	Results: _____	Date Plugged: _____	Date Repaired: _____	Date Put Back in Service: _____
	Review Completed by: _____ Comments: _____				
TA Approved: <input type="checkbox"/> Yes <input type="checkbox"/> Denied Date: _____					

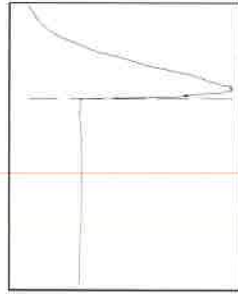
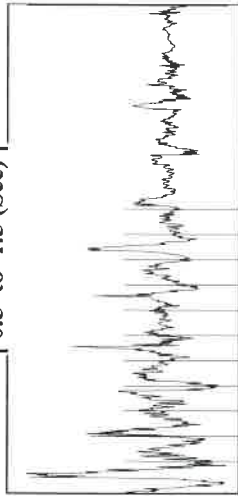
Mail to the Appropriate KCC Conservation Office:

	KCC District Office #1 - 210 E. Frontview, Suite A, Dodge City, KS 67801	Phone 620.682.7933
	KCC District Office #2 - 3450 N. Rock Road, Building 600, Suite 601, Wichita, KS 67226	Phone 316.337.7400
	KCC District Office #3 - 137 E. 21st St., Chanute, KS 66720	Phone 620.902.6450
	KCC District Office #4 - 2301 E. 13th Street, Hays, KS 67601-2651	Phone 785.261.6250



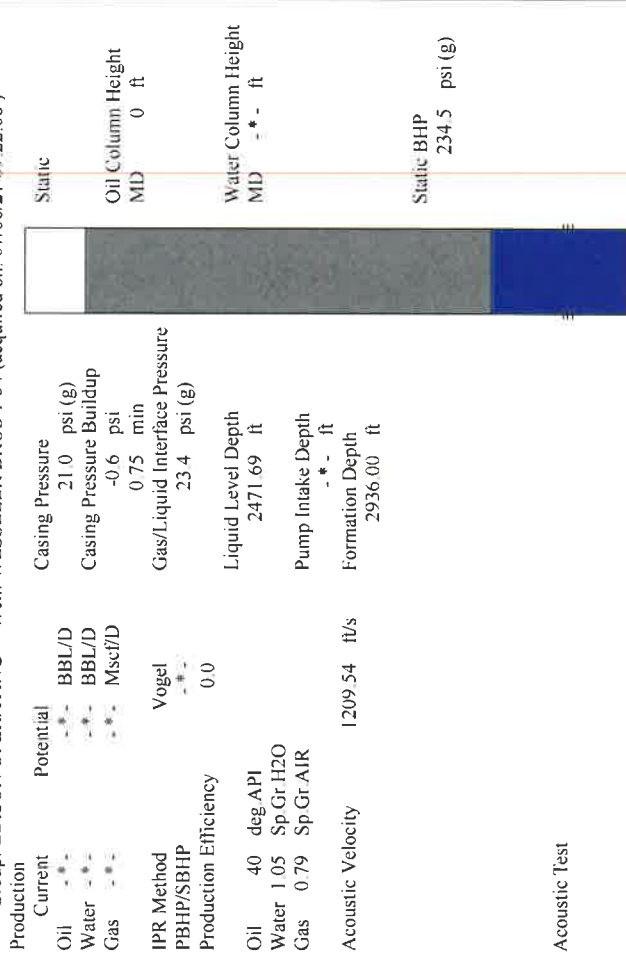
Filter Type High Pass Automatic Collar Count Yes Time 4.087 sec
 Manual Acoustic Velo 1223.94 ft/s Manual JTS/sec 19.305 Joints 77.9714 Jts
 Depth 2471.69 ft

0.5 to 1.5 (Sec)



NO PRESSURE DATA AVAILABLE

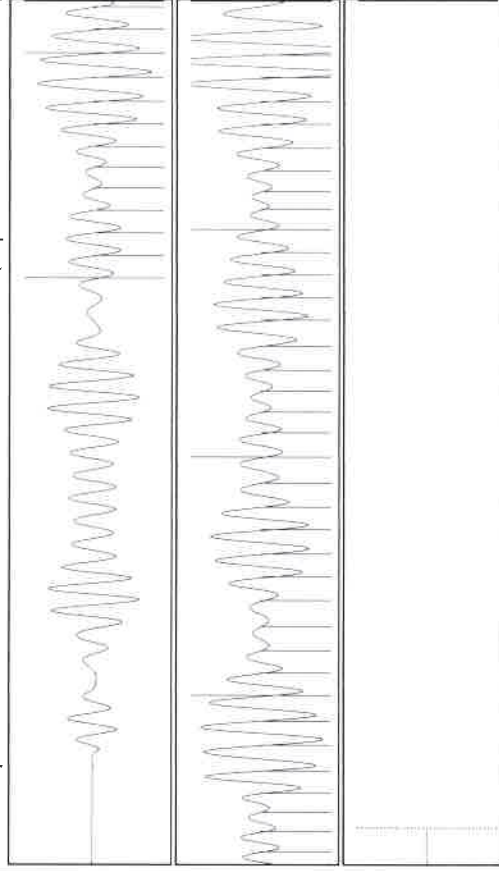
Change in Pressure 0.00 psi PT14020 Range 0 - ? psi
 Change in Time 0.00 min



Static
 Oil Column Height MD 0 ft
 Water Column Height MD *- ft
 Static BHP 234.5 psi (g)

Production Current Potential
 Oil -*- BBL/D 21.0 psi (g)
 Water -*- BBL/D Casing Pressure Buildup
 Gas -*- Mscf/D -0.6 psi
 IPR Method Vogel 0.75 min
 PBHP/SBHP -*- Production Efficiency 23.4 psi (g)
 Oil 40 deg API Liquid Level Depth 2471.69 ft
 Water 1.05 Sp Gr H2O Pump Intake Depth *- ft
 Gas 0.79 Sp Gr AIR Formation Depth 2936.00 ft
 Acoustic Velocity 1209.54 ft/s

Acoustic Test



Acoustic Velocity 1209.54 ft/s Joints counted 48
 Joints Per Second 19.0779 jts/sec Joints to liquid level 77.9714
 Depth to liquid level 2471.69 ft Filter Width 17.305
 Automatic Collar Count Yes Time to 1st Collar 1.356 3.872

Conservation Division
District Office No. 2
3450 N. Rock Road
Building 600, Suite 601
Wichita, KS 67226



Phone: 316-337-7400
Fax: 316-630-4005
<http://kcc.ks.gov/>

Andrew J. French, Chairperson
Dwight D. Keen, Commissioner
Susan K. Duffy, Commissioner

Laura Kelly, Governor

October 11, 2021

BRIAN J MCCOY
Edison Operating Company LLC
8100 E. 22ND ST. N., BLDG 1900
WICHITA, KS 67226-2319

Re: Temporary Abandonment
API 15-159-22852-00-00
WESSELER 1-34
NE/4 Sec.34-18S-10W
Rice County, Kansas

Dear BRIAN J MCCOY:

"Your temporary abandonment (TA) application for the well listed above has been approved. In accordance with K.A.R. 82-3-111 the TA status of this well will expire 10/11/2022.

- * If you return this well to service or plug it, please notify the District Office.
- * If you sell this well you are required to file a Transfer of Operator form, T-1.
- * If the well will remain temporarily abandoned, you must submit a new TA application, CP-111, before 10/11/2022.

You may contact me at the number above if you have questions.

Very truly yours,

Keith Karlin ECRS"