

KANSAS CORPORATION COMMISSION
OIL & GAS CONSERVATION DIVISION

TEMPORARY ABANDONMENT WELL APPLICATION

OPERATOR: License#
Name:
Address 1:
Address 2:
City: State: Zip:
Contact Person:
Phone:
Contact Person Email:
Field Contact Person:
Field Contact Person Phone:

API No. 15-
Spot Description:
Sec. Twp. S. R.
feet from N / S Line of Section
feet from E / W Line of Section
GPS Location: Lat: , Long:
Datum: NAD27 NAD83 WGS84
County: Elevation: GL KB
Lease Name: Well #:
Well Type: (check one) Oil Gas OG WSW Other:
SWD Permit #: ENHR Permit #:
Gas Storage Permit #:
Spud Date: Date Shut-In:

Table with 7 columns: Conductor, Surface, Production, Intermediate, Liner, Tubing. Rows include Size, Setting Depth, Amount of Cement, Top of Cement, Bottom of Cement.

Casing Fluid Level from Surface: How Determined? Date:
Casing Squeeze(s): to w / sacks of cement, to w / sacks of cement. Date:
Do you have a valid Oil & Gas Lease? Yes No
Depth and Type: Junk in Hole at Tools in Hole at Casing Leaks: Yes No Depth of casing leak(s):
Type Completion: ALT. I ALT. II Depth of: DV Tool: w / sacks of cement Port Collar: w / sack of cement
Packer Type: Size: Inch Set at: Feet
Total Depth: Plug Back Depth: Plug Back Method:

Geological Date:

Table with 4 columns: Formation Name, Formation Top, Formation Base, Completion Information. Rows 1 and 2.

UNDER PENALTY OF PERJURY I HEREBY ATTEST THAT THE INFORMATION CONTAINED HEREIN IS TRUE AND CORRECT TO THE BEST OF MY KNOWLEDGE

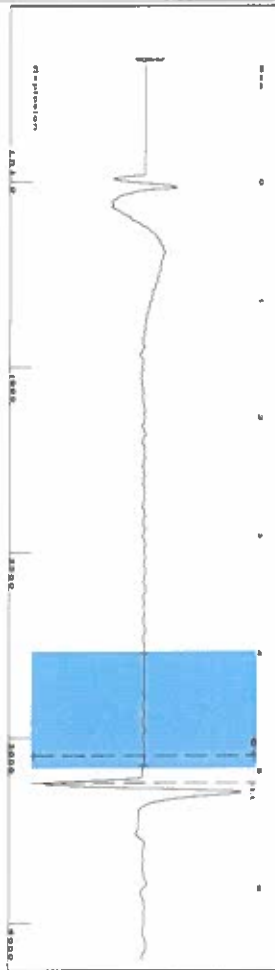
Submitted Electronically

Do NOT Write in This Space - KCC USE ONLY
Date Tested: Results: Date Plugged: Date Repaired: Date Put Back in Service:
Review Completed by: Comments:
TA Approved: Yes Denied Date:

Mail to the Appropriate KCC Conservation Office:

Table with 3 columns: District Office, Address, Phone. Rows for District Office #1, #2, #3, #4.

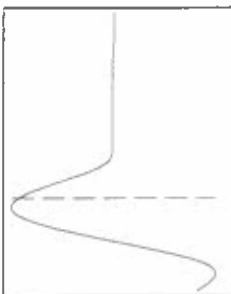
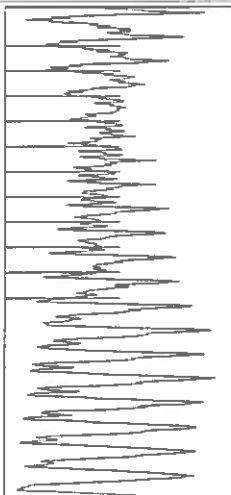
Group: SUBLETTE Well: CORRELL A-1 (acquired on: 10/12/21 14:38:38)



Filter Type High Pass Automatic Collar Count Yes
 Manual Acoustic Velo 1228.68 ft/s Manual JTS/sec 19.3798

Time 5.112 sec
 Joints 102.24 Jts
 Depth 3241.01 ft

[4.0 to 5.0 (Sec)]



Analysis Method: Automatic

Group: SUBLETTE Well: CORRELL A-1 (acquired on: 10/12/21 14:38:38)

Production Potential
 Oil -*- BB/LD
 Water -*- BB/LD
 Gas -*- Mscf/D

IPR Method Vogel
 PBHP/SBHP -*-
 Production Efficiency 0.0

Casing Pressure 452.6 psi (g)
 Casing Pressure Buildup -0.2 psi
 1.00 min
 Gas/Liquid Interface Pressure 491.7 psi (g)

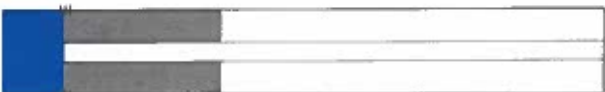
Liquid Level Depth 3241.01 ft
 Pump Intake Depth 4817.00 ft
 Formation Depth 4794.00 ft

Acoustic Velocity 1268 ft/s

Producing Annular Gas Flow 0 Mscf/D
 % Liquid 100 %

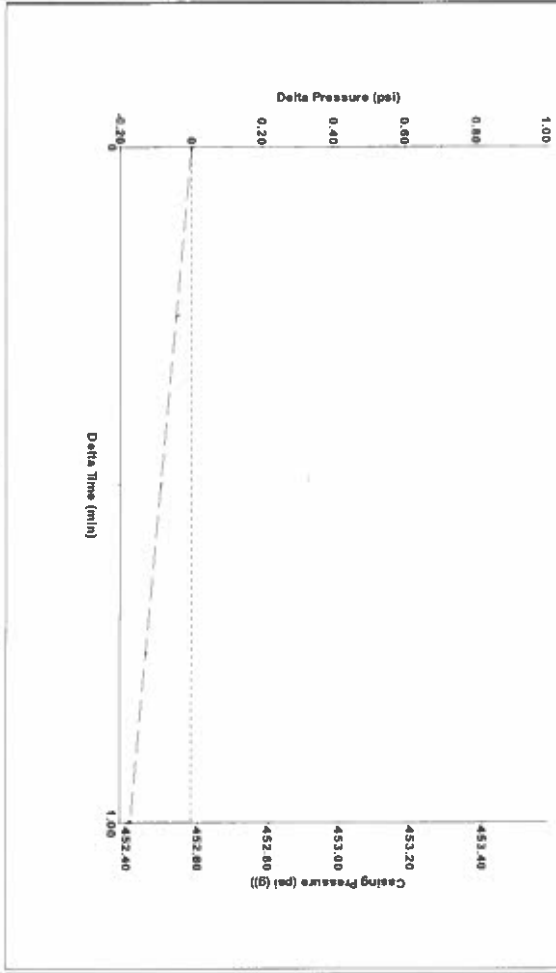
Formation Submergence
 Total Gaseous Liquid Column HIT (TVD) 1576 ft
 Equivalent Gas Free Liquid HIT (TVD) 1576 ft

10/12/21



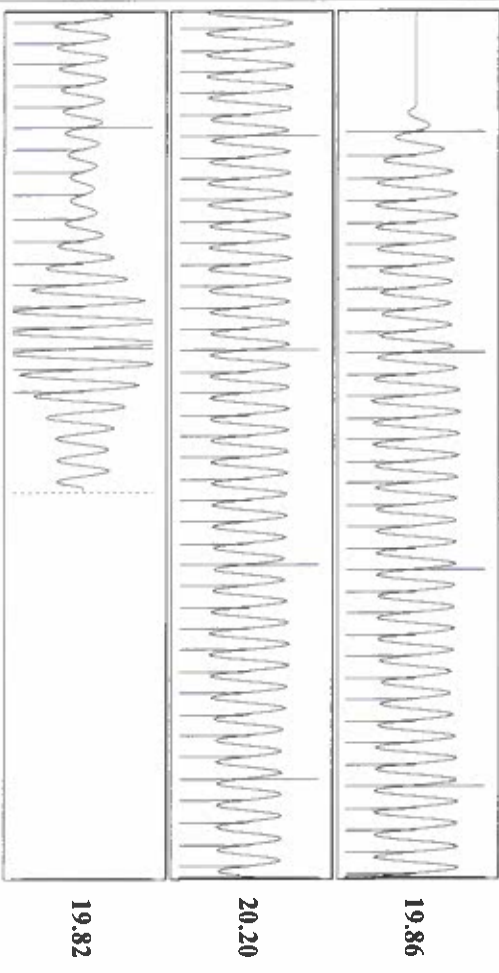
Pump Intake 996.5 psi (g)
 Producing BHP 989.3 psi (g)
 Static BHP -*- psi (g)

Group: SUBLETTE Well: CORRELL A-1 (acquired on: 10/12/21 14:38:38)



Change in Pressure -0.17 psi
 Change in Time 1.00 min
 PT114679
 Range 0 - 9 psi

Group: SUBLETTE Well: CORRELL A-1 (acquired on: 10/12/21 14:38:38)



Acoustic Velocity 1268 ft/s
 Joints Per Second 20 Jts/sec
 Depth to liquid level 3241.01 ft
 Automatic Collar Count Yes

Joints counted 92
 Joints to liquid level 102.24
 Filter Width 17.3798
 Time to 1st Collar 0.28

October 14, 2021

Katherine McClurkan
Merit Energy Company, LLC
13727 Noel Road, Suite 1200
Dallas, TX 75240

Re: Temporary Abandonment
API 15-081-21955-00-00
Correll A-1
NW/4 Sec.08-30S-33W
Haskell County, Kansas

Dear Katherine McClurkan:

"Your temporary abandonment (TA) application for the well listed above has been approved. In accordance with K.A.R. 82-3-111 the TA status of this well will expire 10/14/2022.

- * If you return this well to service or plug it, please notify the District Office.
- * If you sell this well you are required to file a Transfer of Operator form, T-1.
- * If the well will remain temporarily abandoned, you must submit a new TA application, CP-111, before 10/14/2022.

You may contact me at the number above if you have questions.

Very truly yours,

Michael Maier"