

KANSAS CORPORATION COMMISSION
OIL & GAS CONSERVATION DIVISION

TEMPORARY ABANDONMENT WELL APPLICATION

OPERATOR: License#
Name:
Address 1:
Address 2:
City: State: Zip:
Contact Person:
Phone:
Contact Person Email:
Field Contact Person:
Field Contact Person Phone:

API No. 15-
Spot Description:
Sec. Twp. S. R.
GPS Location: Lat: Long:
Datum: NAD27 NAD83 WGS84
County: Elevation:
Lease Name: Well #:
Well Type: Oil Gas OG WSW Other:
SWD Permit #: ENHR Permit #:
Gas Storage Permit #:
Spud Date: Date Shut-In:

Table with 7 columns: Conductor, Surface, Production, Intermediate, Liner, Tubing. Rows include Size, Setting Depth, Amount of Cement, Top of Cement, Bottom of Cement.

Casing Fluid Level from Surface: How Determined? Date:
Casing Squeeze(s): to w / sacks of cement, to w / sacks of cement. Date:
Do you have a valid Oil & Gas Lease? Yes No
Depth and Type: Junk in Hole at Tools in Hole at Casing Leaks: Yes No Depth of casing leak(s):
Type Completion: ALT. I ALT. II Depth of: DV Tool: w / sacks of cement Port Collar: w / sack of cement
Packer Type: Size: Inch Set at: Feet
Total Depth: Plug Back Depth: Plug Back Method:

Geological Date:

Table with 4 columns: Formation Name, Formation Top, Formation Base, Completion Information. Rows 1 and 2.

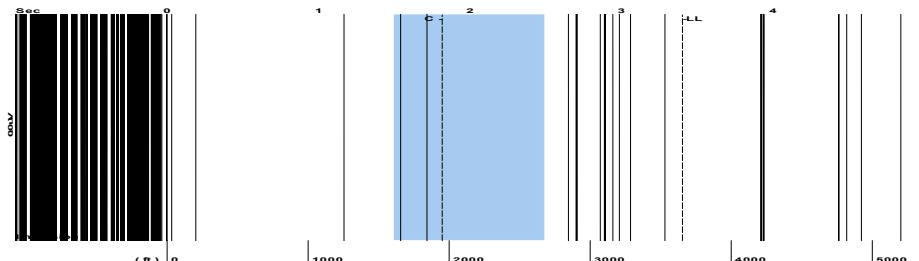
UNDER PENALTY OF PERJURY I HEREBY ATTEST THAT THE INFORMATION CONTAINED HEREIN IS TRUE AND CORRECT TO THE BEST OF MY KNOWLEDGE

Submitted Electronically

Do NOT Write in This Space - KCC USE ONLY
Date Tested: Results: Date Plugged: Date Repaired: Date Put Back in Service:
Review Completed by: Comments:
TA Approved: Yes Denied Date:

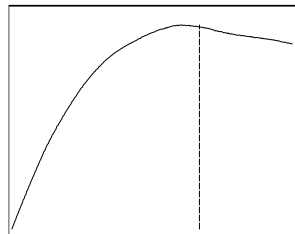
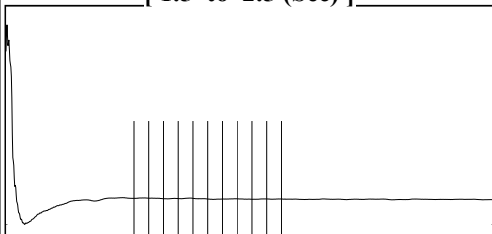
Mail to the Appropriate KCC Conservation Office:

Table with 3 columns: District Office #, Address, Phone. Rows 1-4.

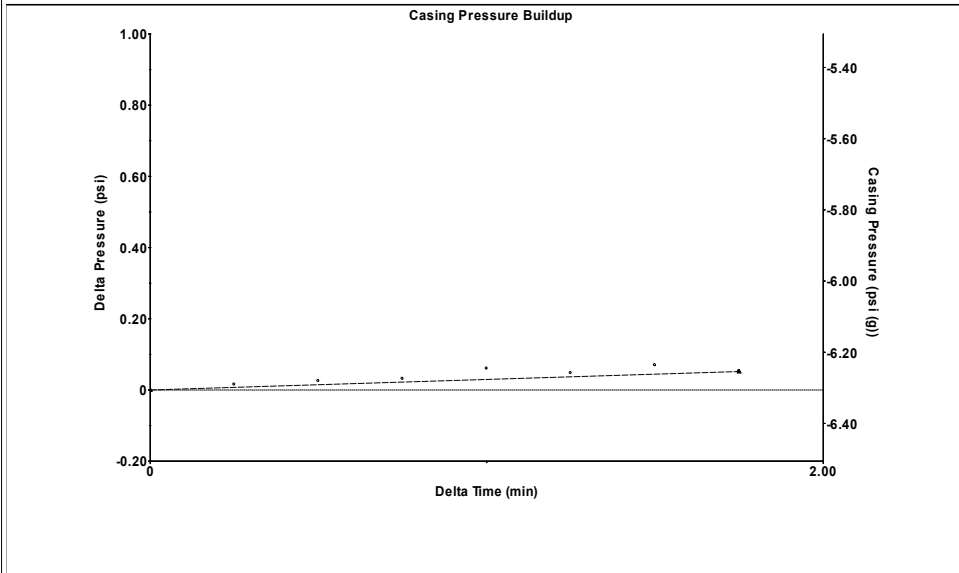


Filter Type High Pass Automatic Collar Count Yes Time 3.402 sec
 Manual Acoustic Veloc 2092.41 ft/s Manual JTS/sec 33.0033 Joints 115.269 Jts
 Depth 3654.03 ft

[1.5 to 2.5 (Sec)]

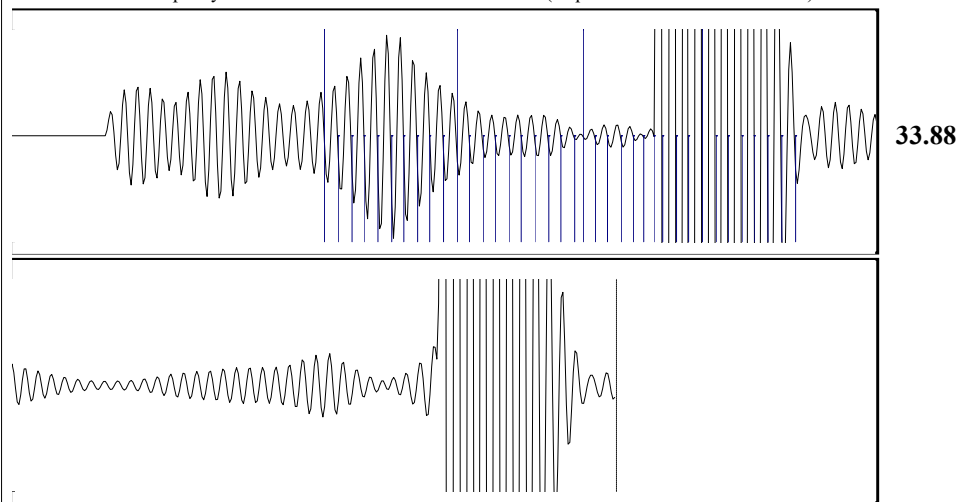
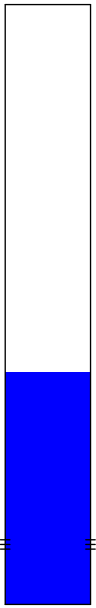


Analysis Method: Automatic



Change in Pressure 0.05 psi PT12098
 Change in Time 1.75 min Range 0 - ? psi

Production Current	Potential	Casing Pressure	Producing
Oil - *-	- *- BBL/D	-6.3 psi (g)	Annular Gas Flow - *- Mscf/D
Water - *-	- *- BBL/D	Casing Pressure Buildup 0.052 psi	% Liquid 100 %
Gas - *-	- *- Mscf/D	1.75 min	
IPR Method	Vogel	Gas/Liquid Interface Pressure - *- psi (g)	
PBHP/SBHP	- *-		
Production Efficiency	0.0	Liquid Level Depth 3654.03 ft	
Oil 40 deg.API		Pump Intake Depth - *- ft	
Water 1.05 Sp.Gr.H2O		Formation Depth 5690.00 ft	
Gas 0.55 Sp.Gr.AIR			
Acoustic Velocity 2148.17 ft/s			
Formation Submergence			Pump Intake - *- psi (g)
Total Gaseous Liquid Column HT (TVD) - *- ft			Producing BHP - *- psi (g)
Equivalent Gas Free Liquid HT (TVD) - *- ft			Static BHP - *- psi (g)
Acoustic Test			



Acoustic Velocity 2148.17 ft/s Joints counted 37
 Joints Per Second 33.8828 jts/sec Joints to liquid level 115.269
 Depth to liquid level 3654.03 ft Filter Width 31.0033 35.0033
 Automatic Collar Count Yes Time to 1st Collar 0.724 1.816

October 14, 2021

Jose Reyes
American Warrior, Inc.
PO BOX 399
GARDEN CITY, KS 67846-0399

Re: Temporary Abandonment
API 15-025-21395-00-00
ESPLUND FARMS 3-29
NE/4 Sec.29-30S-23W
Clark County, Kansas

Dear Jose Reyes:

"Your temporary abandonment (TA) application for the well listed above has been approved. In accordance with K.A.R. 82-3-111 the TA status of this well will expire 10/14/2022.

- * If you return this well to service or plug it, please notify the District Office.
- * If you sell this well you are required to file a Transfer of Operator form, T-1.
- * If the well will remain temporarily abandoned, you must submit a new TA application, CP-111, before 10/14/2022.

You may contact me at the number above if you have questions.

Very truly yours,

Michael Maier"