

KANSAS CORPORATION COMMISSION
OIL & GAS CONSERVATION DIVISION

TEMPORARY ABANDONMENT WELL APPLICATION

OPERATOR: License#
Name:
Address 1:
Address 2:
City: State: Zip:
Contact Person:
Phone:
Contact Person Email:
Field Contact Person:
Field Contact Person Phone:

API No. 15-
Spot Description:
Sec. Twp. S. R.
GPS Location: Lat, Long
Datum: NAD27, NAD83, WGS84
County: Elevation:
Lease Name: Well #:
Well Type: Oil, Gas, OG, WSW, Other
SWD Permit #: ENHR Permit #:
Gas Storage Permit #:
Spud Date: Date Shut-In:

Table with 7 columns: Conductor, Surface, Production, Intermediate, Liner, Tubing. Rows include Size, Setting Depth, Amount of Cement, Top of Cement, Bottom of Cement.

Casing Fluid Level from Surface: How Determined? Date:
Casing Squeeze(s): to w / sacks of cement, to w / sacks of cement. Date:
Do you have a valid Oil & Gas Lease? Yes No
Depth and Type: Junk in Hole at Tools in Hole at Casing Leaks: Yes No Depth of casing leak(s):
Type Completion: ALT. I ALT. II Depth of: DV Tool: w / sacks of cement Port Collar: w / sack of cement
Packer Type: Size: Inch Set at: Feet
Total Depth: Plug Back Depth: Plug Back Method:

Geological Data:

Table with 4 columns: Formation Name, Formation Top, Formation Base, Completion Information. Rows 1 and 2.

UNDER PENALTY OF PERJURY I HEREBY ATTEST THAT THE INFORMATION CONTAINED HEREIN IS TRUE AND CORRECT TO THE BEST OF MY KNOWLEDGE

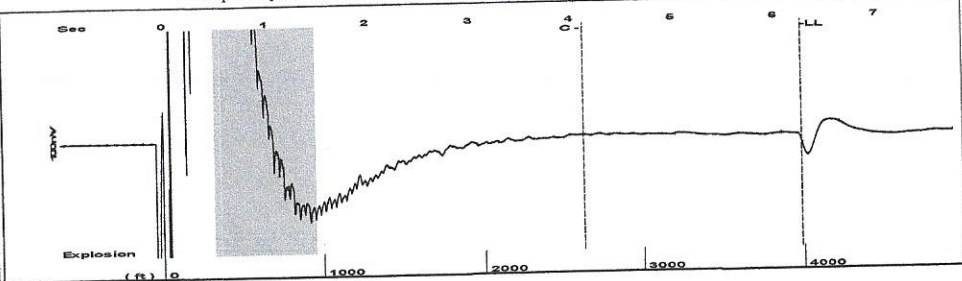
Submitted Electronically

Do NOT Write in This Space - KCC USE ONLY
Date Tested: Results: Date Plugged: Date Repaired: Date Put Back in Service:
Review Completed by: Comments:
TA Approved: Yes Denied Date:

Mail to the Appropriate KCC Conservation Office:

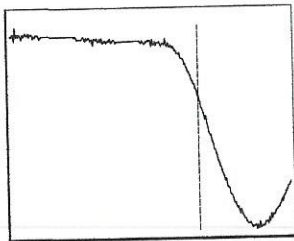
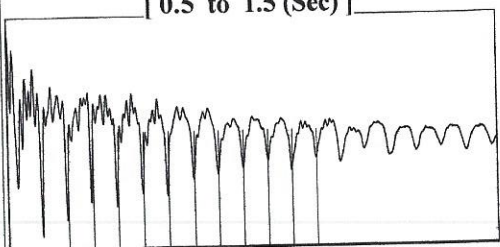
Table with 3 columns: District Office #, Address, Phone. Rows 1-4.

Group: Belpre Well: Schartz 2-12 (acquired on: 10/15/21 09:57:03)



Filter Type High Pass Automatic Collar Count Yes Time 6.261 sec
 Manual Acoustic Veloc 1277.8 ft/s Manual JTS/sec 19.6464 Joints 122.498 Jts
 Depth 3983.63 ft

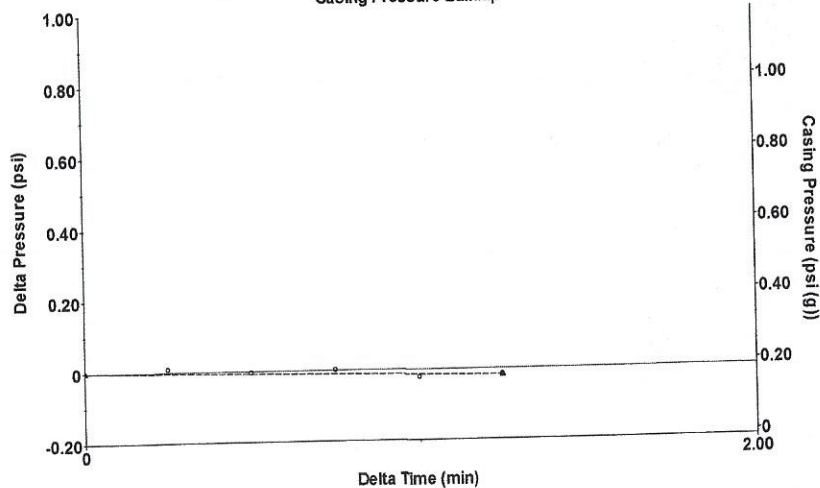
[0.5 to 1.5 (Sec)]



Analysis Method: Automatic

Group: Belpre Well: Schartz 2-12 (acquired on: 10/15/21 09:57:03)

Casing Pressure Buildup



Change in Pressure -0.02 psi PT13440
 Range 0 - ? psi
 Change in Time 1.25 min

Group: Belpre Well: Schartz 2-12 (acquired on: 10/15/21 09:57:03)

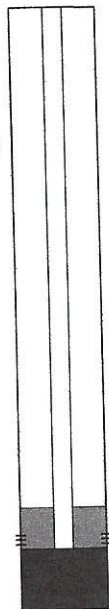
Production
 Current Potential
 Oil - * - - * - BBL/D
 Water - * - - * - BBL/D
 Gas - * - - * - Mscf/D

IPR Method Vogel
 PBHP/SBHP - * -
 Production Efficiency 0.0

Oil 40 deg.API
 Water 1.05 Sp.Gr.H2O
 Gas 0.73 Sp.Gr.AIR

Acoustic Velocity 1272.52 ft/s

Casing Pressure 0.2 psi (g)
 Casing Pressure Buildup -0.0 psi
 1.25 min
 Gas/Liquid Interface Pressure 1.7 psi (g)
 Liquid Level Depth 3983.63 ft
 Pump Intake Depth 4360.00 ft
 Formation Depth 4273.00 ft

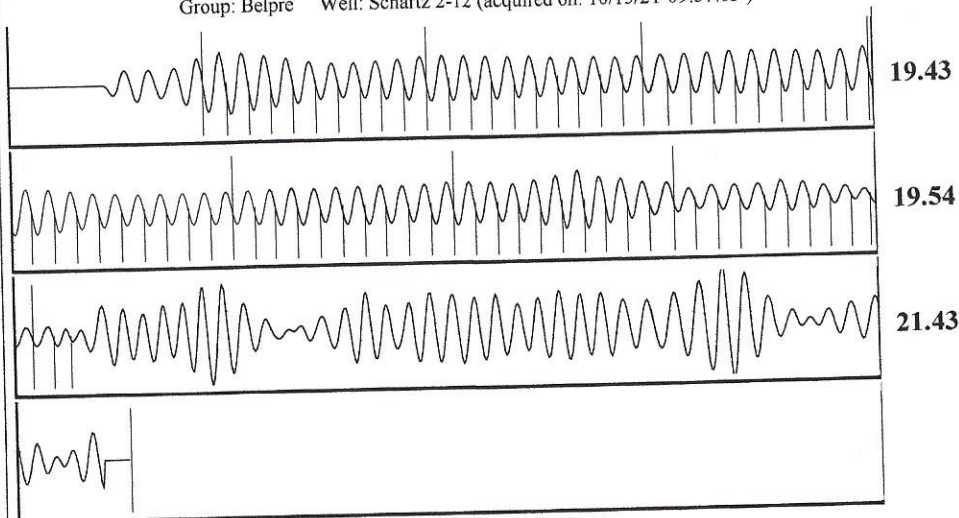


Producing
 Annular Gas Flow 0 Mscf/D
 % Liquid 100 %
 Pump Intake 128.9 psi (g)
 Producing BHP 99.7 psi (g)
 Static BHP - * - psi (g)

Formation Submergence
 Total Gaseous Liquid Column HT (TVD) 376 ft
 Equivalent Gas Free Liquid HT (TVD) 376 ft

Acoustic Test

Group: Belpre Well: Schartz 2-12 (acquired on: 10/15/21 09:57:03)



Acoustic Velocity 1272.52 ft/s Joints counted 72
 Joints Per Second 19.5652 jts/sec Joints to liquid level 122.498
 Depth to liquid level 3983.63 ft Filter Width 17.6464 21.6464
 Automatic Collar Count Yes Time to 1st Collar 0.448 4.128

October 21, 2021

Loveness Mpanje
F. G. Holl Company L.L.C.
9431 E CENTRAL STE 100
WICHITA, KS 67206-2563

Re: Temporary Abandonment
API 15-047-20733-00-00
SCHARTZ 2-12
SW/4 Sec.12-24S-17W
Edwards County, Kansas

Dear Loveness Mpanje:

"Your temporary abandonment (TA) application for the well listed above has been approved. In accordance with K.A.R. 82-3-111 the TA status of this well will expire 10/21/2022.

- * If you return this well to service or plug it, please notify the District Office.
- * If you sell this well you are required to file a Transfer of Operator form, T-1.
- * If the well will remain temporarily abandoned, you must submit a new TA application, CP-111, before 10/21/2022.

You may contact me at the number above if you have questions.

Very truly yours,

Michael Maier"