

KANSAS CORPORATION COMMISSION
OIL & GAS CONSERVATION DIVISION

TEMPORARY ABANDONMENT WELL APPLICATION

OPERATOR: License#
Name:
Address 1:
Address 2:
City: State: Zip:
Contact Person:
Phone:
Contact Person Email:
Field Contact Person:
Field Contact Person Phone:

API No. 15-
Spot Description:
Sec. Twp. S. R.
GPS Location: Lat: Long:
Datum: NAD27 NAD83 WGS84
County: Elevation:
Lease Name: Well #:
Well Type: Oil Gas OG WSW Other:
SWD Permit #: ENHR Permit #:
Gas Storage Permit #:
Spud Date: Date Shut-In:

Table with 7 columns: Conductor, Surface, Production, Intermediate, Liner, Tubing. Rows include Size, Setting Depth, Amount of Cement, Top of Cement, Bottom of Cement.

Casing Fluid Level from Surface: How Determined? Date:
Casing Squeeze(s): to w / sacks of cement, to w / sacks of cement. Date:
Do you have a valid Oil & Gas Lease? Yes No
Depth and Type: Junk in Hole at Tools in Hole at Casing Leaks: Yes No Depth of casing leak(s):
Type Completion: ALT. I ALT. II Depth of: DV Tool: w / sacks of cement Port Collar: w / sack of cement
Packer Type: Size: Inch Set at: Feet
Total Depth: Plug Back Depth: Plug Back Method:

Geological Data:

Table with 4 columns: Formation Name, Formation Top, Formation Base, Completion Information. Rows 1 and 2.

UNDER PENALTY OF PERJURY I HEREBY ATTEST THAT THE INFORMATION CONTAINED HEREIN IS TRUE AND CORRECT TO THE BEST OF MY KNOWLEDGE

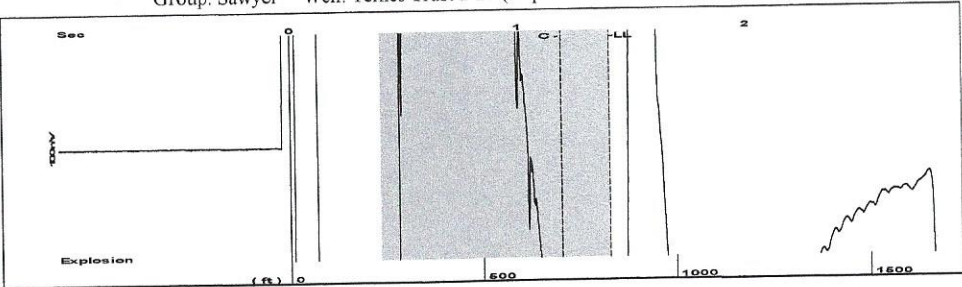
Submitted Electronically

Do NOT Write in This Space - KCC USE ONLY
Date Tested: Results: Date Plugged: Date Repaired: Date Put Back in Service:
Review Completed by: Comments:
TA Approved: Yes Denied Date:

Mail to the Appropriate KCC Conservation Office:

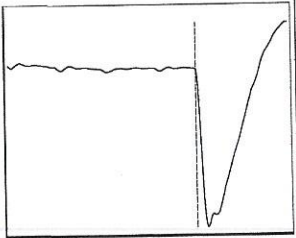
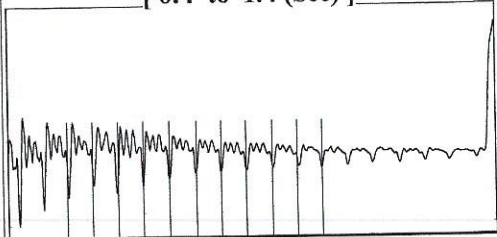
Table with 2 columns: Office Address, Phone. Rows for District Office #1, #2, #3, #4.

Group: Sawyer Well: Ternes Trust 2-28 (acquired on: 10/19/21 09:40:26)



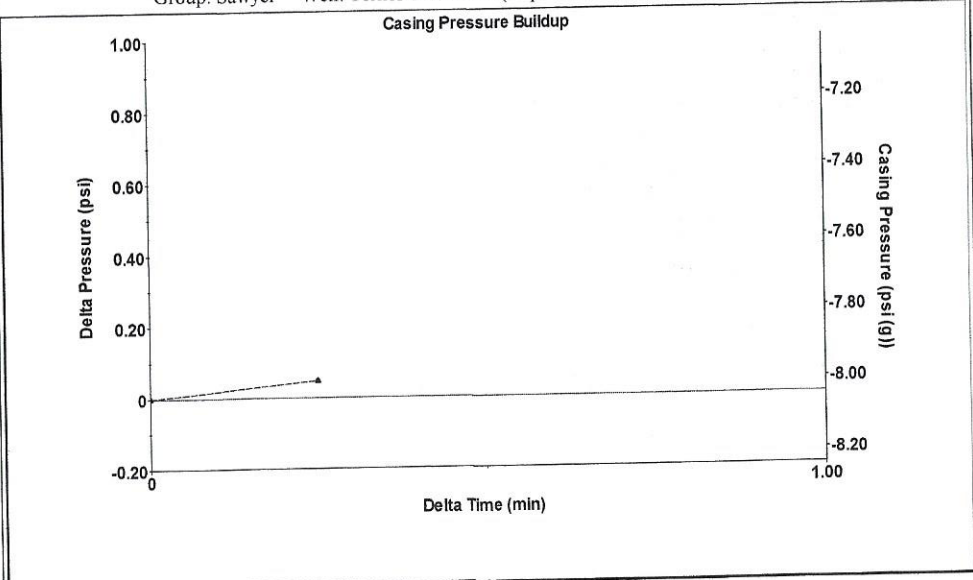
Filter Type High Pass Automatic Collar Count Yes Time 1.402 sec
 Manual Acoustic Velo 1192.29 ft/s Manual JTS/sec 19.2678 Joints 26.7197 Jts
 Depth 826.71 ft

[0.4 to 1.4 (Sec)]



Analysis Method: Automatic

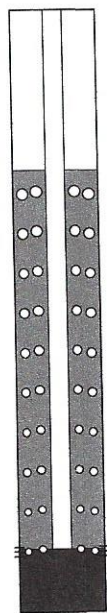
Group: Sawyer Well: Ternes Trust 2-28 (acquired on: 10/19/21 09:40:26)



Change in Pressure 0.05 psi PT13440
 Range 0 - ? psi
 Change in Time 0.25 min

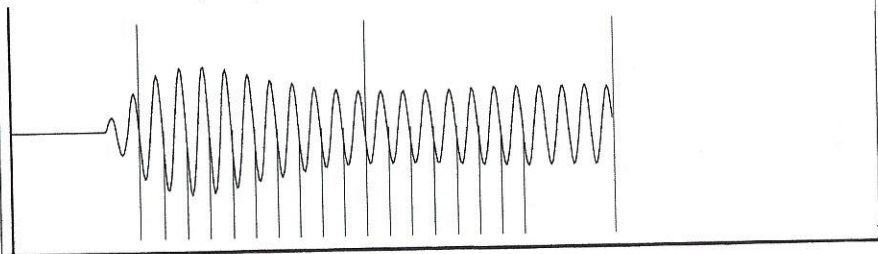
Group: Sawyer Well: Ternes Trust 2-28 (acquired on: 10/19/21 09:40:26)

Production Current Potential Casing Pressure -8.0 psi (g)
 Oil - * - BBL/D Casing Pressure Buildup 0.25 min
 Water - * - BBL/D Gas/Liquid Interface Pressure -7.9 psi (g)
 Gas - * - Mscf/D
 IPR Method Vogel
 PBHP/SBHP - * -
 Production Efficiency 0.0
 Oil 40 deg.API
 Water 1.05 Sp.Gr.H2O
 Gas 0.80 Sp.Gr.AIR
 Acoustic Velocity 1179.33 ft/s
 Formation Submergence 3112 ft
 Total Gaseous Liquid Column HT (TVD) 2865 ft
 Equivalent Gas Free Liquid HT (TVD)
 Acoustic Test



Producing Annular Gas Flow 1 Mscf/D
 % Liquid 92 %
 Pump Intake 940.4 psi (g)
 Producing BHP 949.0 psi (g)
 Static BHP - * - psi (g)

Group: Sawyer Well: Ternes Trust 2-28 (acquired on: 10/19/21 09:40:26)



19.06

Acoustic Velocity 1179.33 ft/s Joints counted 17
 Joints Per Second 19.0583 jts/sec Joints to liquid level 26.7197
 Depth to liquid level 826.708 ft Filter Width 17.2678 21.2678
 Automatic Collar Count Yes Time to 1st Collar 0.296 1.188

October 21, 2021

Loveness Mpanje
F. G. Holl Company L.L.C.
9431 E CENTRAL STE 100
WICHITA, KS 67206-2563

Re: Temporary Abandonment
API 15-007-23073-00-00
TERNES TRUST 2-28
NE/4 Sec.28-30S-14W
Barber County, Kansas

Dear Loveness Mpanje:

"Your temporary abandonment (TA) application for the well listed above has been approved. In accordance with K.A.R. 82-3-111 the TA status of this well will expire 10/21/2022.

- * If you return this well to service or plug it, please notify the District Office.
- * If you sell this well you are required to file a Transfer of Operator form, T-1.
- * If the well will remain temporarily abandoned, you must submit a new TA application, CP-111, before 10/21/2022.

You may contact me at the number above if you have questions.

Very truly yours,

Michael Maier"