

KANSAS CORPORATION COMMISSION
OIL & GAS CONSERVATION DIVISION

Form must be Typed
Form must be signed

TEMPORARY ABANDONMENT WELL APPLICATION

All blanks must be complete

OPERATOR: License#
Name:
Address 1:
Address 2:
City: State: Zip:
Contact Person:
Phone:
Contact Person Email:
Field Contact Person:
Field Contact Person Phone:

API No. 15-
Spot Description:
Sec. Twp. S. R.
feet from N / S Line of Section
feet from E / W Line of Section
GPS Location: Lat: , Long:
Datum: NAD27 NAD83 WGS84
County: Elevation: GL KB
Lease Name: Well #:
Well Type: (check one) Oil Gas OG WSW Other:
SWD Permit #: ENHR Permit #:
Gas Storage Permit #:
Spud Date: Date Shut-In:

Table with 7 columns: Conductor, Surface, Production, Intermediate, Liner, Tubing. Rows include Size, Setting Depth, Amount of Cement, Top of Cement, Bottom of Cement.

Casing Fluid Level from Surface: How Determined? Date:
Casing Squeeze(s): to w / sacks of cement, to w / sacks of cement. Date:
Do you have a valid Oil & Gas Lease? Yes No
Depth and Type: Junk in Hole at Tools in Hole at Casing Leaks: Yes No Depth of casing leak(s):
Type Completion: ALT. I ALT. II Depth of: DV Tool: w / sacks of cement Port Collar: w / sack of cement
Packer Type: Size: Inch Set at: Feet
Total Depth: Plug Back Depth: Plug Back Method:

Geological Data:

Table with 4 columns: Formation Name, Formation Top, Formation Base, Completion Information. Rows 1 and 2.

UNDER PENALTY OF PERJURY I HEREBY ATTEST THAT THE INFORMATION CONTAINED HEREIN IS TRUE AND CORRECT TO THE BEST OF MY KNOWLEDGE

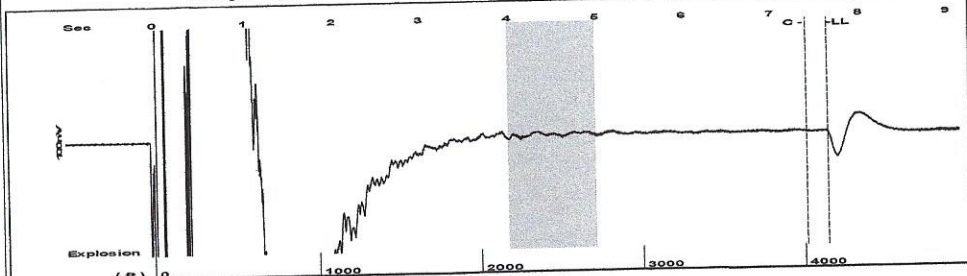
Submitted Electronically

Do NOT Write in This Space - KCC USE ONLY
Date Tested: Results: Date Plugged: Date Repaired: Date Put Back in Service:
Review Completed by: Comments:
TA Approved: Yes Denied Date:

Mail to the Appropriate KCC Conservation Office:

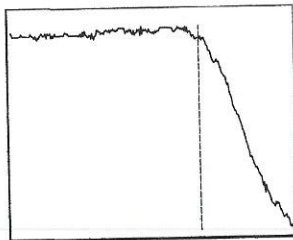
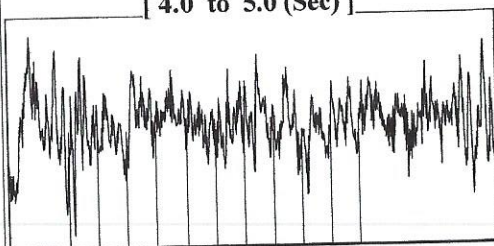
Table with 3 columns: District Office, Address, Phone. Rows for District Office #1, #2, #3, #4.

Group: Belpre Well: Johnson 1-5 (acquired on: 10/18/21 09:34:22)



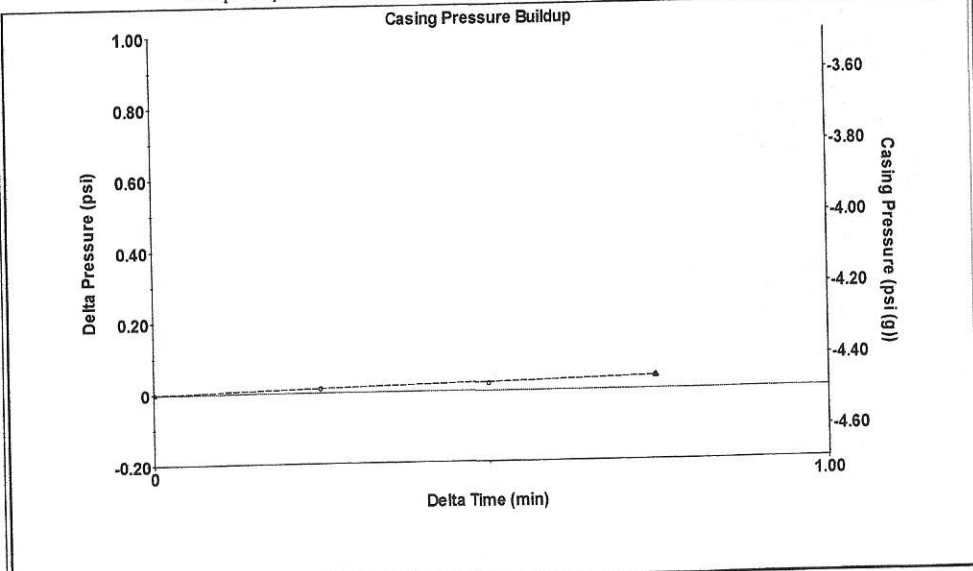
Filter Type High Pass Automatic Collar Count Yes Time 7.633 sec
 Manual Acoustic Velo 1036.09 ft/s Manual JTS/sec 16.8634 Joints 134.851 Jts
 Depth 4142.63 ft

[4.0 to 5.0 (Sec)]



Analysis Method: Automatic

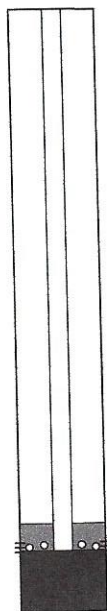
Group: Belpre Well: Johnson 1-5 (acquired on: 10/18/21 09:34:22)



Change in Pressure 0.04 psi PT13440
 Change in Time 0.75 min Range 0 - ? psi

Group: Belpre Well: Johnson 1-5 (acquired on: 10/18/21 09:34:22)

Production	Potential	Casing Pressure	Producing
Current	- * - BBL/D	-4.5 psi (g)	
Oil - * -	- * - BBL/D	Casing Pressure Buildup	Annular
Water - * -	- * - Mscf/D	0.0 psi	Gas Flow
Gas - * -		0.75 min	1 Mscf/D
		Gas/Liquid Interface Pressure	% Liquid
		-3.1 psi (g)	92 %
IPR Method Vogel		Liquid Level Depth	
PBHP/SBHP - * -		4142.63 ft	
Production Efficiency 0.0		Pump Intake Depth	
		4393.00 ft	
Oil 40 deg.API		Formation Depth	
Water 1.05 Sp.Gr.H2O		4359.00 ft	
Gas 0.91 Sp.Gr.AIR			
Acoustic Velocity 1085.45 ft/s			

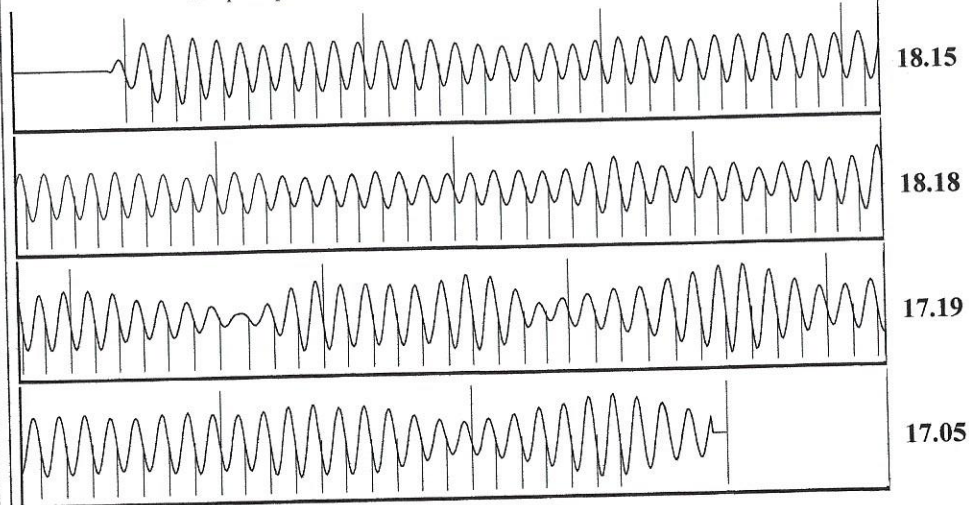


Pump Intake 76.7 psi (g)
 Producing BHP 65.1 psi (g)
 Static BHP - * - psi (g)

Formation Submergence 250 ft
 Total Gaseous Liquid Column HT (TVD) 234 ft
 Equivalent Gas Free Liquid HT (TVD) 234 ft

Acoustic Test

Group: Belpre Well: Johnson 1-5 (acquired on: 10/18/21 09:34:22)



Acoustic Velocity	1085.45 ft/s	Joints counted	126
Joints Per Second	17.6669 jts/sec	Joints to liquid level	134.851
Depth to liquid level	4142.63 ft	Filter Width	14.8634 18.8634
Automatic Collar Count	Yes	Time to 1st Collar	0.26 7.392

October 21, 2021

Loveness Mpanje
F. G. Holl Company L.L.C.
9431 E CENTRAL STE 100
WICHITA, KS 67206-2563

Re: Temporary Abandonment
API 15-047-20322-00-00
JOHNSON 1
SE/4 Sec.05-24S-17W
Edwards County, Kansas

Dear Loveness Mpanje:

"Your temporary abandonment (TA) application for the well listed above has been approved. In accordance with K.A.R. 82-3-111 the TA status of this well will expire 10/21/2022.

- * If you return this well to service or plug it, please notify the District Office.
- * If you sell this well you are required to file a Transfer of Operator form, T-1.
- * If the well will remain temporarily abandoned, you must submit a new TA application, CP-111, before 10/21/2022.

You may contact me at the number above if you have questions.

Very truly yours,

Michael Maier"