

KANSAS CORPORATION COMMISSION
OIL & GAS CONSERVATION DIVISION

TEMPORARY ABANDONMENT WELL APPLICATION

OPERATOR: License#
Name:
Address 1:
Address 2:
City: State: Zip:
Contact Person:
Phone:
Contact Person Email:
Field Contact Person:
Field Contact Person Phone:

API No. 15-
Spot Description:
Sec. Twp. S. R.
GPS Location: Lat: Long:
Datum: NAD27 NAD83 WGS84
County: Elevation:
Lease Name: Well #:
Well Type: Oil Gas OG WSW Other:
SWD Permit #: ENHR Permit #:
Gas Storage Permit #:
Spud Date: Date Shut-In:

Table with 7 columns: Conductor, Surface, Production, Intermediate, Liner, Tubing. Rows include Size, Setting Depth, Amount of Cement, Top of Cement, Bottom of Cement.

Casing Fluid Level from Surface: How Determined? Date:
Casing Squeeze(s): to w / sacks of cement, to w / sacks of cement. Date:
Do you have a valid Oil & Gas Lease? Yes No
Depth and Type: Junk in Hole at Tools in Hole at Casing Leaks: Yes No Depth of casing leak(s):
Type Completion: ALT. I ALT. II Depth of: DV Tool: w / sacks of cement Port Collar: w / sack of cement
Packer Type: Size: Inch Set at: Feet
Total Depth: Plug Back Depth: Plug Back Method:

Geological Data:

Table with 4 columns: Formation Name, Formation Top, Formation Base, Completion Information. Rows 1 and 2.

UNDER PENALTY OF PERJURY I HEREBY ATTEST THAT THE INFORMATION CONTAINED HEREIN IS TRUE AND CORRECT TO THE BEST OF MY KNOWLEDGE

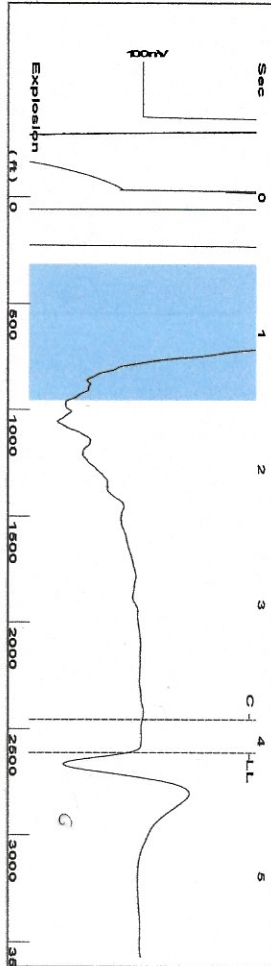
Submitted Electronically

Do NOT Write in This Space - KCC USE ONLY
Date Tested: Results: Date Plugged: Date Repaired: Date Put Back in Service:
Review Completed by: Comments:
TA Approved: Yes Denied Date:

Mail to the Appropriate KCC Conservation Office:

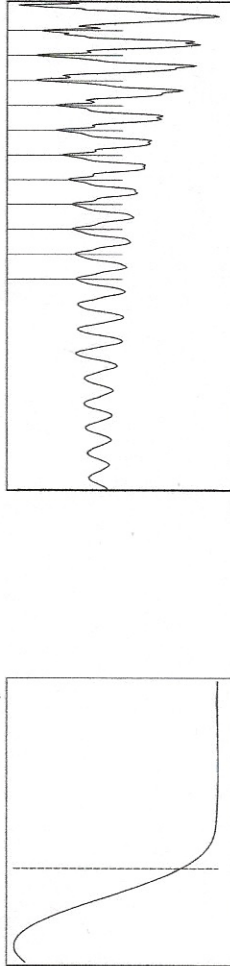
Table with 3 columns: District Office, Address, Phone. Rows for District Office #1, #2, #3, #4.

Group: TAVD Well: Stone A-3 (acquired on: 10/21/21 11:23:07)



Filter Type High Pass Automatic Collar Count Yes  
 Manual Acoustic Vel 1267.84 f/s Manual JTS/sec 19.6078  
 Time 4.092 sec  
 Joints 80.7931 Jts  
 Depth 2612.04 ft

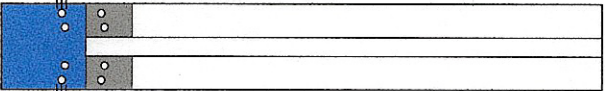
[ 0.5 to 1.5 (Sec) ]



**Analysis Method: Automatic**

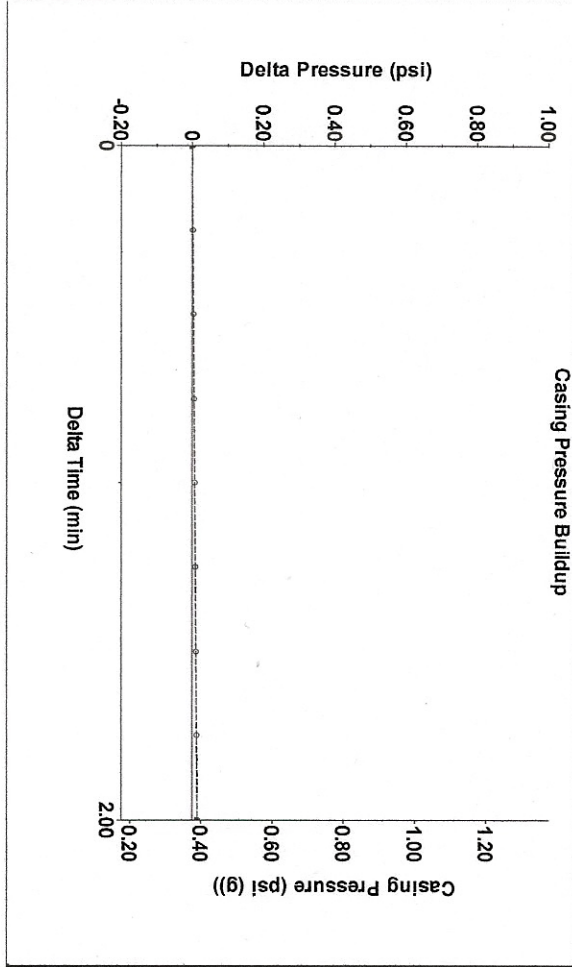
Group: TAVD Well: Stone A-3 (acquired on: 10/21/21 11:23:07)

Production Current	Potential	Casing Pressure	Producing
Oil - *-	- *- BBL/D	0.4 psi (g)	Annular Gas Flow
Water - *-	- *- BBL/D	0.014 psi	0 Mscf/D
Gas - *-	- *- Mscf/D	2.00 min	% Liquid 100 %
IPR Method	Vogel - *-	Gas/Liquid Interface Pressure	
PBHP/SBHP	0.0	1.4 psi (g)	
Production Efficiency		Liquid Level Depth	
Oil 40 deg API		2612.04 ft	
Water 1.05 Sp.Gr.H2O		Pump Intake Depth	
Gas 0.73 Sp.Gr.AIR		2910.00 ft	
Acoustic Velocity	1276.66 f/s	Formation Depth	
		3062.00 ft	

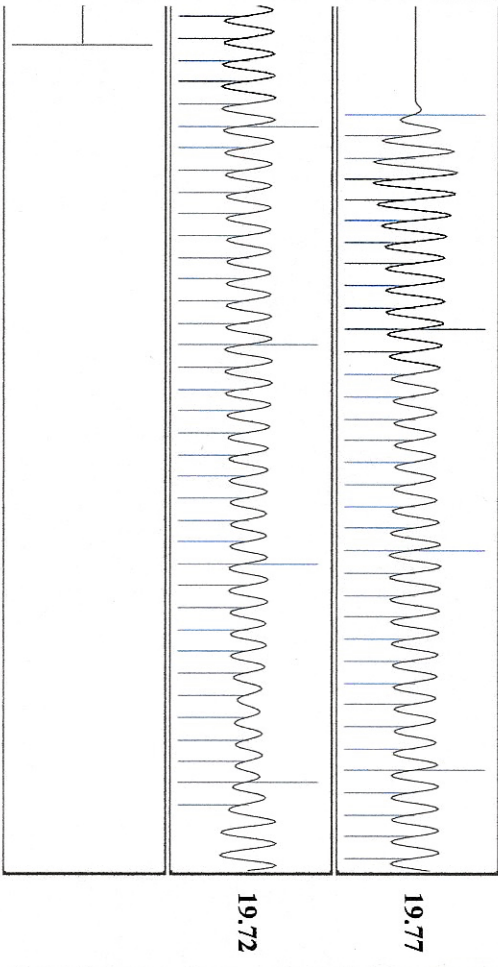


Pump Intake 102.5 psi (g)  
 Producing BHP 171.6 psi (g)  
 Static BHP - \*- psi (g)

Group: TAVD Well: Stone A-3 (acquired on: 10/21/21 11:23:07)



Group: TAVD Well: Stone A-3 (acquired on: 10/21/21 11:23:07)



Acoustic Velocity 1276.66 f/s Joints counted 71  
 Joints Per Second 19.7442 Jts/sec Joints to liquid level 80.7931  
 Depth to liquid level 2612.04 ft Filter Width 17.6078  
 Automatic Collar Count Yes Time to 1st Collar 0.252 21.6078 3.848

October 28, 2021

Katherine McClurkan  
Merit Energy Company, LLC  
13727 Noel Road, Suite 1200  
Dallas, TX 75240-7362

Re: Temporary Abandonment  
API 15-055-21908-00-01  
Stone A 3  
NW/4 Sec.09-26S-33W  
Finney County, Kansas

Dear Katherine McClurkan:

"Your temporary abandonment (TA) application for the well listed above has been approved. In accordance with K.A.R. 82-3-111 the TA status of this well will expire 10/28/2022.

- \* If you return this well to service or plug it, please notify the District Office.
- \* If you sell this well you are required to file a Transfer of Operator form, T-1.
- \* If the well will remain temporarily abandoned, you must submit a new TA application, CP-111, before 10/28/2022.

You may contact me at the number above if you have questions.

Very truly yours,

Michael Maier"