

KANSAS CORPORATION COMMISSION
OIL & GAS CONSERVATION DIVISION

TEMPORARY ABANDONMENT WELL APPLICATION

OPERATOR: License#
Name:
Address 1:
Address 2:
City: State: Zip:
Contact Person:
Phone:
Contact Person Email:
Field Contact Person:
Field Contact Person Phone:

API No. 15-
Spot Description:
Sec. Twp. S. R.
GPS Location: Lat: Long:
Datum: NAD27 NAD83 WGS84
County: Elevation:
Lease Name: Well #:
Well Type: Oil Gas OG WSW Other:
SWD Permit #: ENHR Permit #:
Gas Storage Permit #:
Spud Date: Date Shut-In:

Table with 7 columns: Conductor, Surface, Production, Intermediate, Liner, Tubing. Rows include Size, Setting Depth, Amount of Cement, Top of Cement, Bottom of Cement.

Casing Fluid Level from Surface: How Determined? Date:
Casing Squeeze(s): to w / sacks of cement, to w / sacks of cement. Date:
Do you have a valid Oil & Gas Lease? Yes No
Depth and Type: Junk in Hole at Tools in Hole at Casing Leaks: Yes No Depth of casing leak(s):
Type Completion: ALT. I ALT. II Depth of: DV Tool: w / sacks of cement Port Collar: w / sack of cement
Packer Type: Size: Inch Set at: Feet
Total Depth: Plug Back Depth: Plug Back Method:

Geological Data:

Table with 4 columns: Formation Name, Formation Top, Formation Base, Completion Information. Rows 1 and 2.

UNDER PENALTY OF PERJURY I HEREBY ATTEST THAT THE INFORMATION CONTAINED HEREIN IS TRUE AND CORRECT TO THE BEST OF MY KNOWLEDGE

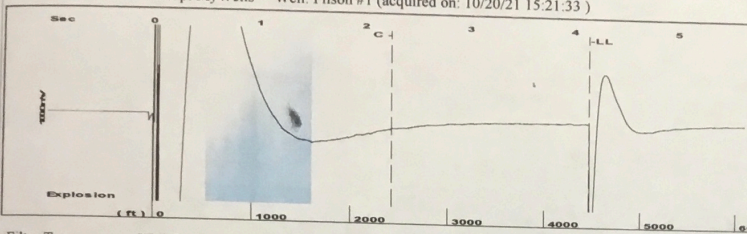
Submitted Electronically

Do NOT Write in This Space - KCC USE ONLY
Date Tested: Results: Date Plugged: Date Repaired: Date Put Back in Service:
Review Completed by: Comments:
TA Approved: Yes Denied Date:

Mail to the Appropriate KCC Conservation Office:

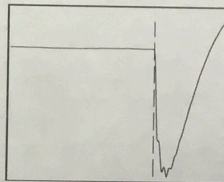
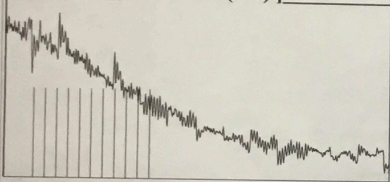
Table with 2 columns: Office Address, Phone. Rows for KCC District Office #1, #2, #3, #4.

Group: MyWells Well: Filson #1 (acquired on: 10/20/21 15:21:33)



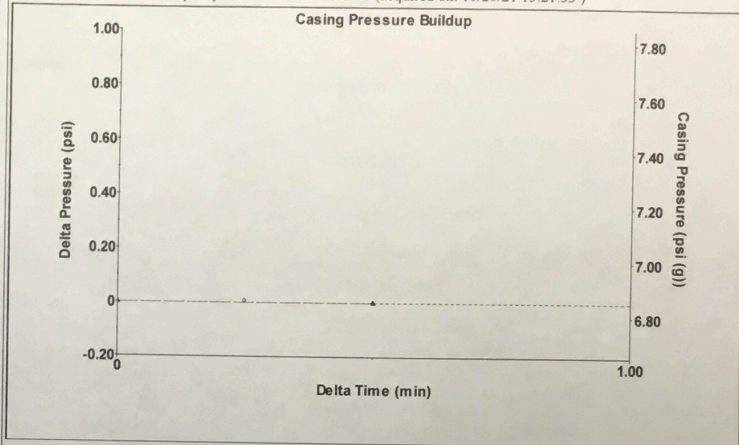
Filter Type High Pass Automatic Collar Count Yes Time 4.143 sec
 Manual Acoustic Velo 2113.33 ft/s Manual JTS/sec 33.3333 Joints 140.862 Jts
 Depth 4465.33 ft

[0.5 to 1.5 (Sec)]



Analysis Method: Automatic

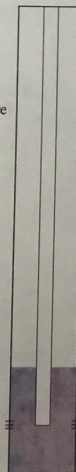
Group: MyWells Well: Filson #1 (acquired on: 10/20/21 15:21:33)



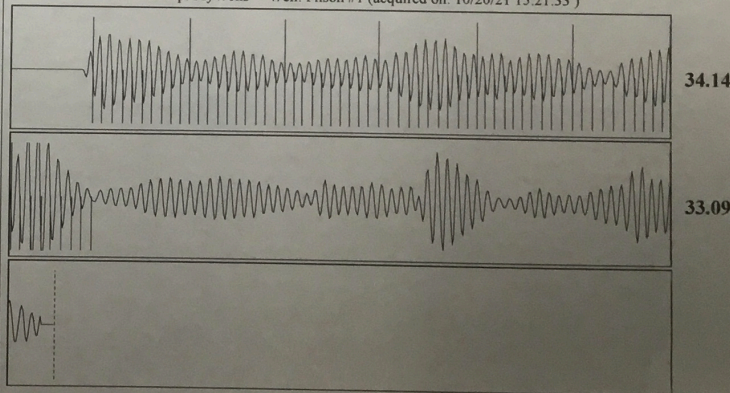
Change in Pressure -0.00 psi PT4212
 Change in Time 0.50 min Range 0 - ? psi

Group: MyWells Well: Filson #1 (acquired on: 10/20/21 15:21:33)

Production Current	Potential	Casing Pressure	Producing
Oil 0	0.0 BBL/D	6.9 psi (g)	
Water 5	5.9 BBL/D	Casing Pressure Buildup	Annular Gas Flow 0 Mscf/D
Gas 35.0	41.3 Mscf/D	-0.000 psi	% Liquid 100 %
		0.50 min	
IPR Method Vogel	Gas/Liquid Interface Pressure	8.7 psi (g)	
PBHP/SBHP 0.33			
Production Efficiency 84.7			
	Liquid Level Depth		
Oil 40 deg.API	4465.33 ft		
Water 1.05 Sp.Gr.H2O	Pump Intake Depth		
Gas 0.55 Sp.Gr.AIR	5292.00 ft		
Acoustic Velocity 2155.6 ft/s	Formation Depth		
	5280.50 ft		
		Pump Intake	
		384.5 psi (g)	
Formation Submergence	Total Gaseous Liquid Column HT (TVD) 827 ft	Producing BHP	
	Equivalent Gas Free Liquid HT (TVD) 827 ft	379.3 psi (g)	
Acoustic Test		Static BHP	
		1180.2 psi (g)	



Group: MyWells Well: Filson #1 (acquired on: 10/20/21 15:21:33)



Acoustic Velocity 2155.6 ft/s Joints counted 68
 Joints Per Second 34 jts/sec Joints to liquid level 140.862
 Depth to liquid level 4465.33 ft Filter Width 31.3333 35.3333
 Automatic Collar Count Yes Time to 1st Collar 0.248 2.248

Conservation Division
District Office No. 1
210 E. Frontview, Suite A
Dodge City, KS 67801



Phone: 620-682-7933
<http://kcc.ks.gov/>

Andrew J. French, Chairperson
Dwight D. Keen, Commissioner
Susan K. Duffy, Commissioner

Laura Kelly, Governor

October 28, 2021

Shayne G. Hayes
Hayes Oil & Gas LLC
1081 W HWY 160
PO BOX 108
ATTICA, KS 67009-0108

Re: Temporary Abandonment
API 15-033-21561-00-00
FILSON 1
NW/4 Sec.05-34S-20W
Comanche County, Kansas

Dear Shayne G. Hayes:

"Your temporary abandonment (TA) application for the well listed above has been approved. In accordance with K.A.R. 82-3-111 the TA status of this well will expire 10/28/2022.

- * If you return this well to service or plug it, please notify the District Office.
- * If you sell this well you are required to file a Transfer of Operator form, T-1.
- * If the well will remain temporarily abandoned, you must submit a new TA application, CP-111, before 10/28/2022.

You may contact me at the number above if you have questions.

Very truly yours,

Michael Maier"