

KANSAS CORPORATION COMMISSION
OIL & GAS CONSERVATION DIVISION

TEMPORARY ABANDONMENT WELL APPLICATION

OPERATOR: License#
Name:
Address 1:
Address 2:
City: State: Zip:
Contact Person:
Phone:
Contact Person Email:
Field Contact Person:
Field Contact Person Phone:

API No. 15-
Spot Description:
Sec. Twp. S. R.
GPS Location: Lat: Long:
Datum: NAD27 NAD83 WGS84
County: Elevation:
Lease Name: Well #:
Well Type: Oil Gas OG WSW Other:
SWD Permit #: ENHR Permit #:
Gas Storage Permit #:
Spud Date: Date Shut-In:

Table with 7 columns: Conductor, Surface, Production, Intermediate, Liner, Tubing. Rows include Size, Setting Depth, Amount of Cement, Top of Cement, Bottom of Cement.

Casing Fluid Level from Surface: How Determined? Date:
Casing Squeeze(s): to w / sacks of cement, to w / sacks of cement. Date:
Do you have a valid Oil & Gas Lease? Yes No
Depth and Type: Junk in Hole at Tools in Hole at Casing Leaks: Yes No Depth of casing leak(s):
Type Completion: ALT. I ALT. II Depth of: DV Tool: w / sacks of cement Port Collar: w / sack of cement
Packer Type: Size: Inch Set at: Feet
Total Depth: Plug Back Depth: Plug Back Method:

Geological Data:

Table with 4 columns: Formation Name, Formation Top, Formation Base, Completion Information. Rows 1 and 2.

UNDER PENALTY OF PERJURY I HEREBY ATTEST THAT THE INFORMATION CONTAINED HEREIN IS TRUE AND CORRECT TO THE BEST OF MY KNOWLEDGE

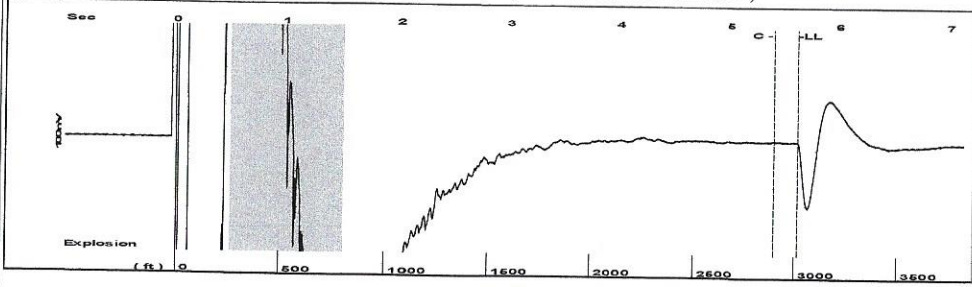
Submitted Electronically

Do NOT Write in This Space - KCC USE ONLY
Date Tested: Results: Date Plugged: Date Repaired: Date Put Back in Service:
Review Completed by: Comments:
TA Approved: Yes Denied Date:

Mail to the Appropriate KCC Conservation Office:

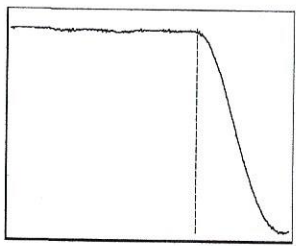
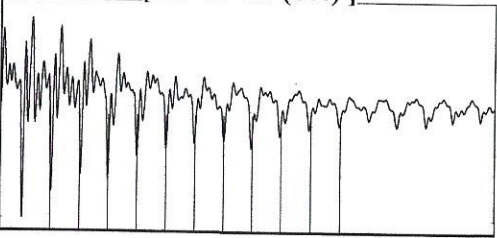
Table with 2 columns: Office Address, Phone. Rows for District Office #1, #2, #3, #4.

Group: Belpre Well: Lunz 3-21 (acquired on: 10/21/21 10:48:33)



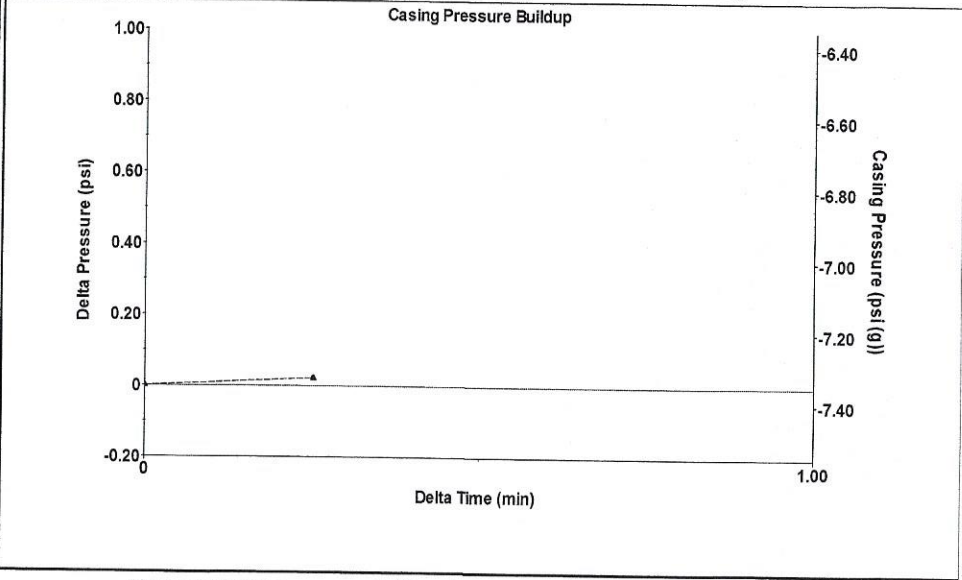
Filter Type High Pass Automatic Collar Count Yes Time 5.615 sec
 Manual Acoustic Velo 1056.22 ft/s Manual JTS/sec 17.0358 Joints 97.2247 Jts
 Depth 3013.97 ft

[0.5 to 1.5 (Sec)]



Analysis Method: Automatic

Group: Belpre Well: Lunz 3-21 (acquired on: 10/21/21 10:48:33)

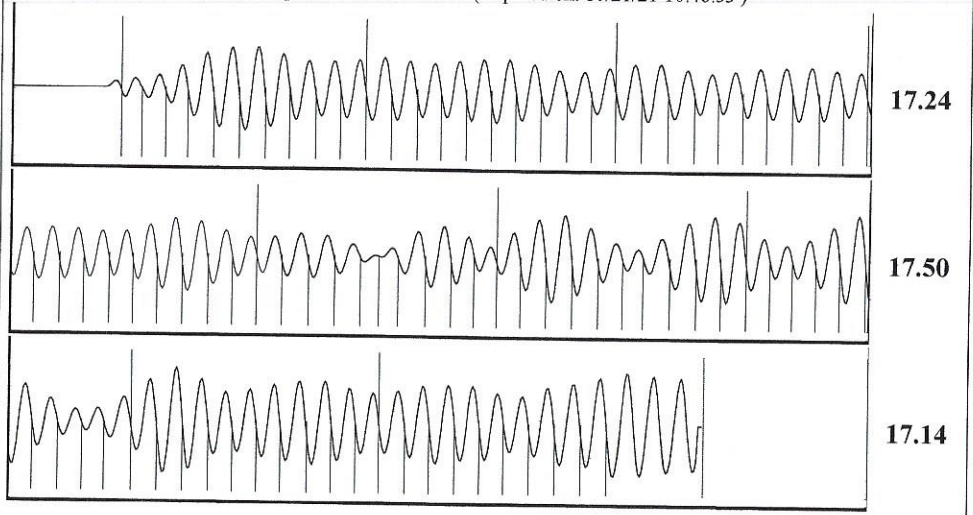


Change in Pressure 0.02 psi PT13440
 Change in Time 0.25 min Range 0 - ? psi

Group: Belpre Well: Lunz 3-21 (acquired on: 10/21/21 10:48:33)

Production	Potential	Casing Pressure	Producing
Oil - * -	- * - BBL/D	-7.4 psi (g)	Annular Gas Flow
Water - * -	- * - BBL/D	Casing Pressure Buildup	2 Mscf/D
Gas - * -	- * - Mscf/D	0.021 psi	% Liquid
		0.25 min	89 %
IPR Method	Vogel	Gas/Liquid Interface Pressure	
PBHP/SBHP	- * -	-6.6 psi (g)	
Production Efficiency	0.0		
Oil 40 deg.API		Liquid Level Depth	
Water 1.05 Sp.Gr.H2O		3013.97 ft	
Gas 0.91 Sp.Gr.AIR		Pump Intake Depth	
		4372.00 ft	
Acoustic Velocity	1073.54 ft/s	Formation Depth	
		4345.00 ft	
Formation Submergence		Pump Intake	
Total Gaseous Liquid Column HT (TVD)	1358 ft	404.0 psi (g)	
Equivalent Gas Free Liquid HT (TVD)	1214 ft	Producing BHP	
		395.1 psi (g)	
Acoustic Test		Static BHP	
		- * - psi (g)	

Group: Belpre Well: Lunz 3-21 (acquired on: 10/21/21 10:48:33)



Acoustic Velocity 1073.54 ft/s Joints counted 89
 Joints Per Second 17.3152 jts/sec Joints to liquid level 97.2247
 Depth to liquid level 3013.97 ft Filter Width 15.0358 19.0358
 Automatic Collar Count Yes Time to 1st Collar 0.252 5.392

October 28, 2021

Loveness Mpanje
F. G. Holl Company L.L.C.
9431 E CENTRAL STE 100
WICHITA, KS 67206-2563

Re: Temporary Abandonment
API 15-047-20648-00-00
LUNZ 3-21
NE/4 Sec.21-24S-16W
Edwards County, Kansas

Dear Loveness Mpanje:

"Your temporary abandonment (TA) application for the well listed above has been approved. In accordance with K.A.R. 82-3-111 the TA status of this well will expire 10/28/2022.

- * If you return this well to service or plug it, please notify the District Office.
- * If you sell this well you are required to file a Transfer of Operator form, T-1.
- * If the well will remain temporarily abandoned, you must submit a new TA application, CP-111, before 10/28/2022.

You may contact me at the number above if you have questions.

Very truly yours,

Michael Maier"