

KANSAS CORPORATION COMMISSION
OIL & GAS CONSERVATION DIVISION

TEMPORARY ABANDONMENT WELL APPLICATION

OPERATOR: License#
Name:
Address 1:
Address 2:
City: State: Zip:
Contact Person:
Phone:
Contact Person Email:
Field Contact Person:
Field Contact Person Phone:

API No. 15-
Spot Description:
Sec. Twp. S. R.
feet from N / S Line of Section
feet from E / W Line of Section
GPS Location: Lat: , Long:
Datum: NAD27 NAD83 WGS84
County: Elevation: GL KB
Lease Name: Well #:
Well Type: Oil Gas OG WSW Other:
SWD Permit #: ENHR Permit #:
Gas Storage Permit #:
Spud Date: Date Shut-In:

Table with 7 columns: Conductor, Surface, Production, Intermediate, Liner, Tubing. Rows include Size, Setting Depth, Amount of Cement, Top of Cement, Bottom of Cement.

Casing Fluid Level from Surface: How Determined? Date:
Casing Squeeze(s): to w / sacks of cement, to w / sacks of cement. Date:
Do you have a valid Oil & Gas Lease? Yes No
Depth and Type: Junk in Hole at Tools in Hole at Casing Leaks: Yes No Depth of casing leak(s):
Type Completion: ALT. I ALT. II Depth of: DV Tool: w / sacks of cement Port Collar: w / sack of cement
Packer Type: Size: Inch Set at: Feet
Total Depth: Plug Back Depth: Plug Back Method:

Geological Data:

Table with 4 columns: Formation Name, Formation Top, Formation Base, Completion Information. Rows 1 and 2.

UNDER PENALTY OF PERJURY I HEREBY ATTEST THAT THE INFORMATION CONTAINED HEREIN IS TRUE AND CORRECT TO THE BEST OF MY KNOWLEDGE

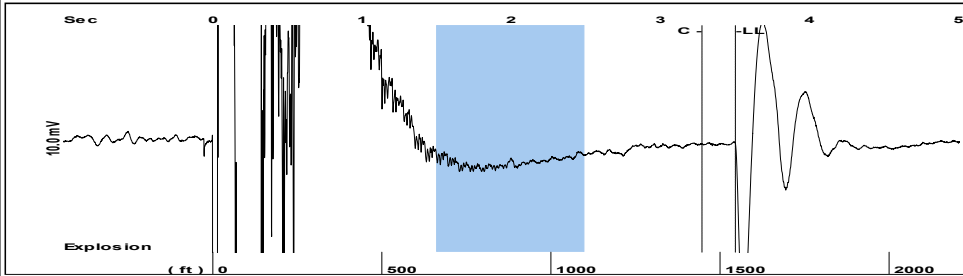
Submitted Electronically

Do NOT Write in This Space - KCC USE ONLY
Date Tested: Results: Date Plugged: Date Repaired: Date Put Back in Service:
Review Completed by: Comments:
TA Approved: Yes Denied Date:

Mail to the Appropriate KCC Conservation Office:

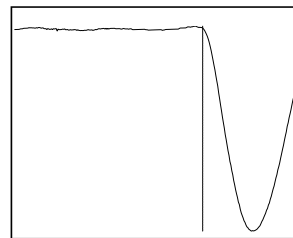
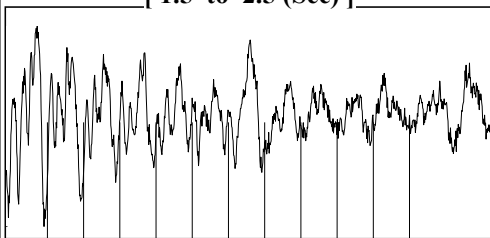
Table with 3 columns: District Office, Address, Phone. Rows for District Office #1, #2, #3, #4.

Group: MyWells Well: Epler 3-30 (acquired on: 10/26/21 09:00:34 )



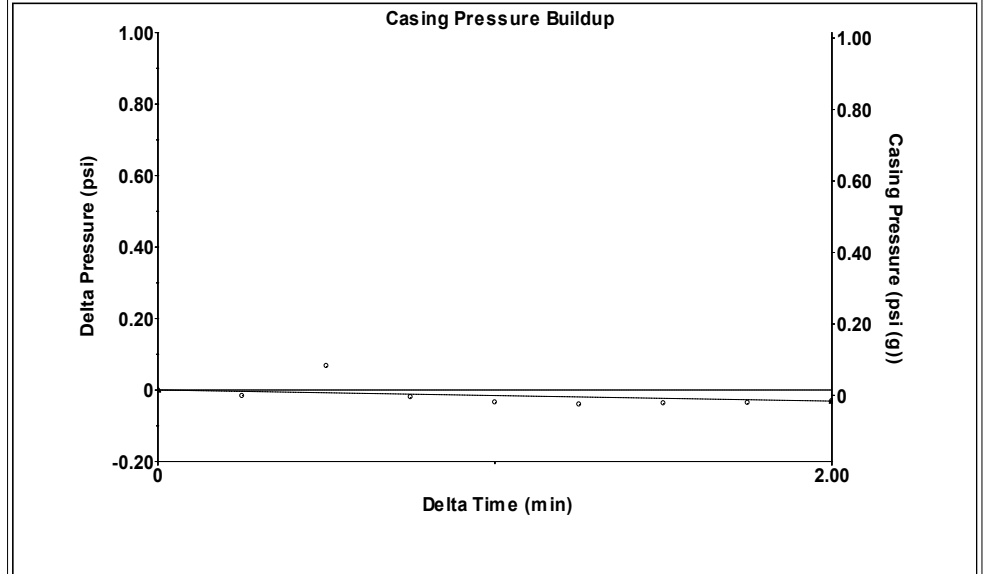
Filter Type High Pass Automatic Collar Count Yes Time 3.504 sec  
 Manual Acoustic Velo 875.908 ft/s Manual JTS/sec 13.459 Joints 47.4797 Jts  
 Depth 1544.99 ft

[ 1.5 to 2.5 (Sec) ]



**Analysis Method: Automatic**

Group: MyWells Well: Epler 3-30 (acquired on: 10/26/21 09:00:34 )

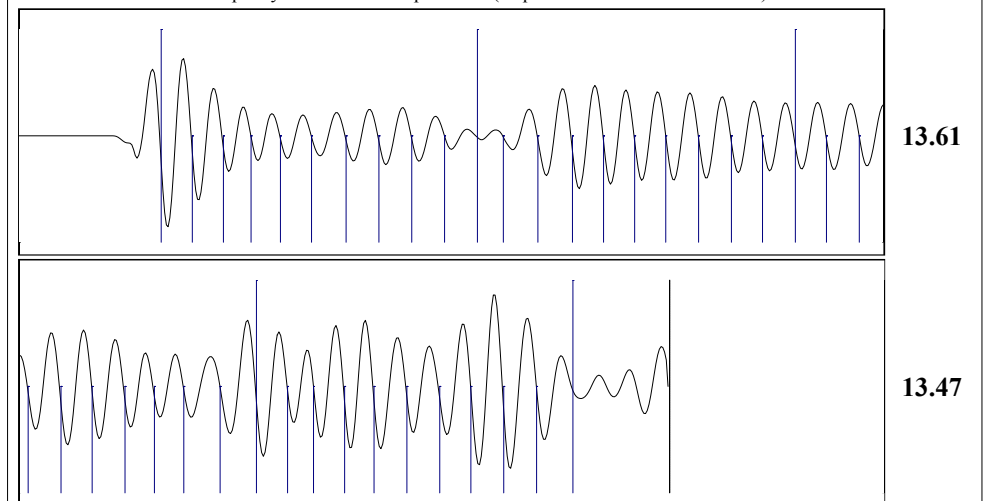


Change in Pressure -0.03 psi PT 17384  
 Change in Time 2.00 min Range 0 - ? psi

Group: MyWells Well: Epler 3-30 (acquired on: 10/26/21 09:00:34 )

<b>Production</b>	<b>Potential</b>	<b>Casing Pressure</b>	<b>Producing</b>
Current	- * - BBL/D	0.0 psi (g)	
Oil - * -	- * - BBL/D	Casing Pressure Buildup	
Water - * -	- * - Mscf/D	-0.031 psi	
Gas - * -		2.00 min	
		Gas/Liquid Interface Pressure	
		0.9 psi (g)	
<b>IPR Method</b>	<b>Vogel</b>	<b>Liquid Level Depth</b>	<b>Annular Gas Flow</b>
PBHP/SBHP	- * -	1544.99 ft	0 Mscf/D
Production Efficiency	0.0	<b>Pump Intake Depth</b>	<b>% Liquid</b>
		4037.00 ft	100 %
		<b>Formation Depth</b>	
		4037.00 ft	
<b>Oil</b> 40 deg.API		<b>Pump Intake</b>	
<b>Water</b> 1.05 Sp.Gr.H2O		823.7 psi (g)	
<b>Gas</b> 1.08 Sp.Gr.AIR		<b>Producing BHP</b>	
		823.7 psi (g)	
<b>Acoustic Velocity</b> 881.843 ft/s		<b>Static BHP</b>	
		- * - psi (g)	
<b>Formation Submergence</b>			
Total Gaseous Liquid Column HT (TVD)	2492 ft		
Equivalent Gas Free Liquid HT (TVD)	2492 ft		
<b>Acoustic Test</b>			

Group: MyWells Well: Epler 3-30 (acquired on: 10/26/21 09:00:34 )



Acoustic Velocity 881.843 ft/s Joints counted 40  
 Joints Per Second 13.5501 jts/sec Joints to liquid level 47.4797  
 Depth to liquid level 1544.99 ft Filter Width 11.459 15.459  
 Automatic Collar Count Yes Time to 1st Collar 0.328 3.28

Conservation Division  
District Office No. 4  
2301 E. 13th Street  
Hays, KS 67601-2651



Phone: 785-261-6250  
Fax: 785-625-0564  
<http://kcc.ks.gov/>

Andrew J. French, Chairperson  
Dwight D. Keen, Commissioner  
Susan K. Duffy, Commissioner

Laura Kelly, Governor

October 28, 2021

Melody C. Fletcher  
Oil Producers, Inc. of Kansas  
1710 WATERFRONT PKWY  
WICHITA, KS 67206-6603

Re: Temporary Abandonment  
API 15-179-21202-00-00  
EPLER 3-23  
SE/4 Sec.23-09S-26W  
Sheridan County, Kansas

Dear Melody C. Fletcher:

Your application for Temporary Abandonment (TA) for the above-listed well is denied for the following reasons(s):

**High Fluid Level**

Pursuant to K.A.R. 82-3-111, the well must be plugged, or returned to service, or obtain temporary abandonment status by 11/27/2021.

**This deadline does NOT override any compliance deadline given to you in any Commission Order.**

You may contact me if you have any questions.

Sincerely,  
RICHARD WILLIAMS  
KCC DISTRICT 4