

Saman Sharifaie

Petroleum Geologist

GEOLOGIST'S REPORT

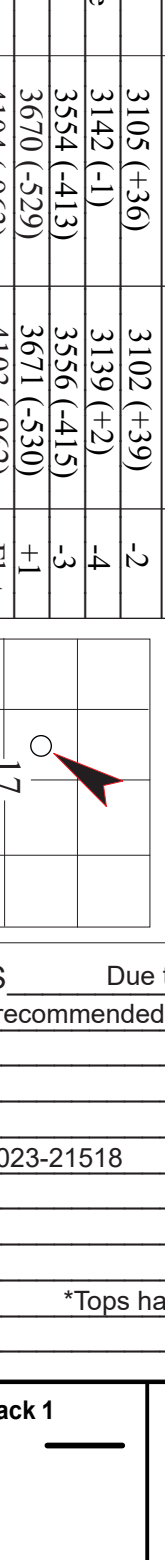
DRILLING TIME AND SAMPLE LOG

COMPANY: **Martin Drilling Co., Inc.**
LEASE: Jones "A" #5-17
FIELD: Jones Canyon South
LOCATION: 1980' F.N.L. & 2080' F.W.L.
COUNTY: Cheyenne STATE: Kansas
CONTRACTOR: **Martin Drilling #3**
RFD: 09/02/19 COMP: 09/11/19
MUD UP: 3.248" TYPE MUD: Chemical
SAMPLES SAVED FROM: 3.50" TO RTD
DRILLING TIME KEPT FROM: 3.50" TO RTD
SAMPLES EXAMINED FROM: 3.45" TO RTD
GEOLOGICAL SUPERVISION FROM: 3.50" TO RTD

ELEVATIONS
KB 3141'
DF _____
GL 3116'
Measurements Are All From Kelly Bushing
CASING
CONDUCTOR _____
SURFACE: 8-5/8" at 304'
SUBDUCE: N/A

ELECTRICAL SURVEYS
CND, DIL, MEL, SWIR
REFERENCE WELL: Berveco - Vada #1-17
Fluorvet Hydrilite

Formation	Sample Tops	E-log Tops	Strat Pos.
Anhydrite	3105 (+30)	3102 (+39)	-2
Neva Anhydrite	3143 (-1)	3139 (+2)	-4
Neva	3354 (-413)	3356 (-415)	-3
Foraker	3670 (-529)	3671 (-530)	-1
Foraker	4104 (-963)	4103 (-962)	FBI
Stark	4326 (-1185)	4326 (-1185)	-1
Mound City	4381 (-1240)	4380 (-1239)	-2
Fl Scott	4504 (-1363)	4503 (-1362)	-3
Celia	4598 (-1457)	4598 (-1457)	-8



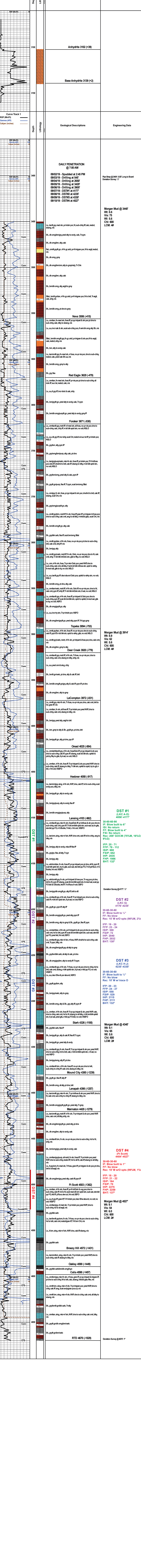
REMARKS Due to poor shows of oil in multiple potential pay zones and negative DST results, it is recommended and agreed upon by all parties that this well be plugged and abandoned.

Respectfully Submitted,

API #15-023-21518

Saman Sharifaie
Petroleum Geologist

*Tops have been adjusted to electric logs



Pipe Strap @ 3404': 0.55' Long to Board
Deviation Survey: 1/2"

Morgan Mud @ 3440'
Wt: 8.6
Vis: 75
Wl: 5.6
Chl: 600
LCM: 4#

Morgan Mud @ 3914'
Wt: 8.9
Vis: 62
Wl: 5.6
Chl: 600
LCM: 4#

Morgan Mud @ 4340'
Wt: 8.1
Vis: 65
Wl: 6.0
Chl: 600
LCM: 2#

Morgan Mud @ 4527'
Wt: 9.1
Vis: 5.0
Wl: 6.0
Chl: 600
LCM: 2#

DST #1 (LKC A-D) 4056'-4177'
30-60-60-90
IF: Blow built to 6"
ISIP: No return
FF: Blow built to 4"
FSI: No return
Rec: 208' GOCM (75%M, 16%O, 9%G)
IFP: 25 - 71
FFP: 79 - 112
ISIP: 680
FSIP: 652
IHP: 2115
FHP: 1986
BHT: 132°

DST #2 (LKC H-J) 4176'-4235'
30-60-30-60
IF: Blow built to 1/2"
FF: No blow
Rec: 15' M w/O spts (98%M, 2%O)
IFP: 19 - 20
FFP: 23 - 24
ISIP: 300
FSIP: 20
IHP: 720
FHP: 2111
BHT: 132°

DST #3 (LKC H-J) 4235'-4330'
30-60-30-60
IF: Blow built to 1/2"
FF: No blow
Rec: 10' M w/O trace O
IFP: 20 - 23
FFP: 24 - 27
ISIP: 529
FSIP: 652
IHP: 2115
FHP: 2111
BHT: 132°

DST #4 (F Scott) 4484'-4527'
30-60-30-60
IF: Blow built to 1"
FF: No blow
Rec: 10' M w/O spts (99%M, 1%O)
IFP: 18 - 20
FFP: 21 - 22
ISIP: 164
FSIP: 70
IHP: 2275
FHP: 2259
BHT: 137°

DST #4 (LKC H-J) 4235'-4330'
30-60-30-60
IF: Blow built to 1/2"
FF: No blow
Rec: 10' M w/O trace O
IFP: 20 - 23
FFP: 24 - 27
ISIP: 529
FSIP: 652
IHP: 2115
FHP: 2111
BHT: 132°

DST #4 (LKC H-J) 4235'-4330'
30-60-30-60
IF: Blow built to 1/2"
FF: No blow
Rec: 10' M w/O trace O
IFP: 20 - 23
FFP: 24 - 27
ISIP: 529
FSIP: 652
IHP: 2115
FHP: 2111
BHT: 132°

DST #4 (LKC H-J) 4235'-4330'
30-60-30-60
IF: Blow built to 1/2"
FF: No blow
Rec: 10' M w/O trace O
IFP: 20 - 23
FFP: 24 - 27
ISIP: 529
FSIP: 652
IHP: 2115
FHP: 2111
BHT: 132°

DST #4 (LKC H-J) 4235'-4330'
30-60-30-60
IF: Blow built to 1/2"
FF: No blow
Rec: 10' M w/O trace O
IFP: 20 - 23
FFP: 24 - 27
ISIP: 529
FSIP: 652
IHP: 2115
FHP: 2111
BHT: 132°

DST #4 (LKC H-J) 4235'-4330'
30-60-30-60
IF: Blow built to 1/2"
FF: No blow
Rec: 10' M w/O trace O
IFP: 20 - 23
FFP: 24 - 27
ISIP: 529
FSIP: 652
IHP: 2115
FHP: 2111
BHT: 132°

DST #4 (LKC H-J) 4235'-4330'
30-60-30-60
IF: Blow built to 1/2"
FF: No blow
Rec: 10' M w/O trace O
IFP: 20 - 23
FFP: 24 - 27
ISIP: 529
FSIP: 652
IHP: 2115
FHP: 2111
BHT: 132°

DST #4 (LKC H-J) 4235'-4330'
30-60-30-60
IF: Blow built to 1/2"
FF: No blow
Rec: 10' M w/O trace O
IFP: 20 - 23
FFP: 24 - 27
ISIP: 529
FSIP: 652
IHP: 2115
FHP: 2111
BHT: 132°