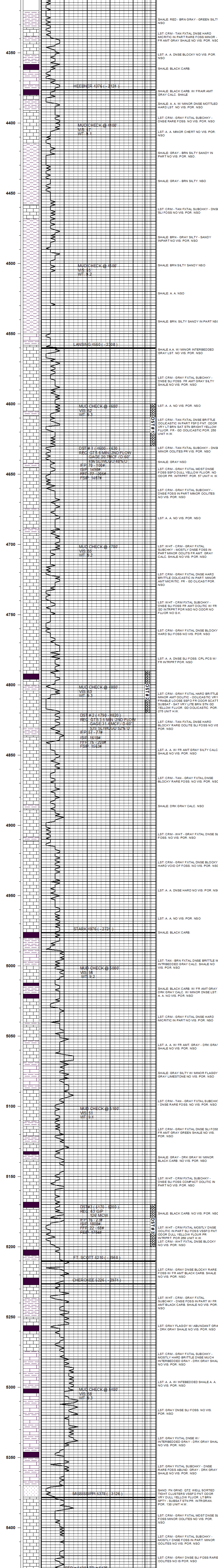


KEVIN L. KESSLER

CONSULTING PETROLEUM GEOLOGIST

(316) 522 - 7338

OPERATOR : MULL DRILLING CO. INC.		ELEVATION	
LEASE : BOUZIDEN UNIT	WELL # : 3 - 10	KB: 2252'	
LOCATION : 1621' FNL & 2315' FEL		GL: 2240'	
SEC : 10	TWP : 32 S	RGE : 23 W	MEASUREMENTS FROM:
COUNTY : CLARK		STATE : KANSAS	
CONTRACTOR: DUKE RIG # 1		CASING RECORD:	
COMM: 07 - 10 - 2019		COMP: 07 - 22 - 2019	
RTD: 5430'		LTD: 5426'	
GEOLOGICAL SUPERVISION FROM: 4300'		TO: RTD	
SAMPLES SAVED FROM: 4300'		TO: RTD	
FORMATION:	TOP	LOG	SAMPLE
		DATUM	DATUM
			COMP.
HEEBNER	4376	- 2124	4376 - 2124 + 04
LANSING	4560	- 2308	4560 - 2308 + 02
STARK	4976	- 2724	4976 - 2724 + 04
FORT SCOTT	5210	- 2958	5210 - 2958 FLAT
CHEROKEE	5226	- 2974	5226 - 2974 FLAT
MISSISSIPPI	5378	- 3126	5378 - 3126 - 04
REFERENCE WELL FOR STRUCTURAL COMPARISON:			
MULL # 2-10 BOUZIDEN UNIT 10-32S-23W CLARK CO. KS.			



COMMENTS :

5 1/2" PRODUCTION CASING WAS RUN TO FURTHER TEST THE PRODUCTIVITY OF THIS WELL