



## DRILL STEM TEST REPORT

Prepared For: **Edison Operating Company LLC**

8100 East 22nd Street North  
Building 1900  
Wichita, Kansas 667226

ATTN: Adam Kennedy

**Kuhn #1-17**

**17-19s-12w Barton**

Start Date: 2019.11.03 @ 17:55:00

End Date:

Job Ticket #: 01386

DST #: 2

Eagle Testers  
1309 Patton Road Great Bend, Kansas 67530  
620-791-7394

Printed: 2019.11.04 @ 00:37:51



# DRILL STEM TEST REPORT

Edison Operating Company LLC

17-19s-12w Barton

8100 East 22nd Street North  
 Building 1900  
 Wichita, Kansas 667226  
 ATTN: Adam Kennedy

Kuhn #1-17

Job Ticket: 01386

DST#: 2

Test Start: 2019.11.03 @ 17:55:00

## GENERAL INFORMATION:

Formation: **Kansas City "H"**

Deviated: No Whipstock: ft (KB)

Time Tool Opened: 19:28:00

Time Test Ended:

Test Type: Conventional Bottom Hole (Initial)

Tester: Gene Budig

Unit No: 1

Interval: **3314.00 ft (KB) To 3331.00 ft (KB) (TVD)**

Reference Elevations: 1882.00 ft (KB)

Total Depth: 3331.00 ft (KB) (TVD)

1874.00 ft (CF)

Hole Diameter: 7.78 inches Hole Condition: Fair

KB to GR/CF: 8.00 ft

Serial #: 9119

Inside

Press@RunDepth: 550.24 psig @ 3326.00 ft (KB)

Capacity: 5000.00 psig

Start Date: 2019.11.03

End Date:

2019.11.04

Last Calib.:

2019.11.04

Start Time:

17:55:00

End Time:

00:16:30

Time On Btm:

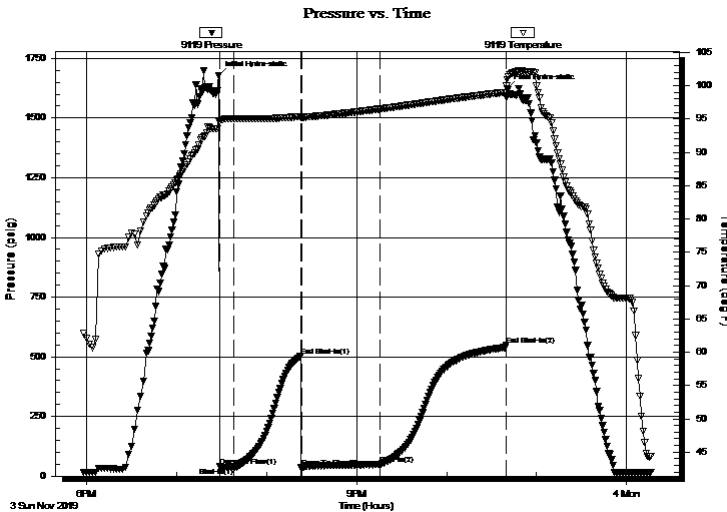
2019.11.03 @ 19:28:00

Time Off Btm:

2019.11.03 @ 22:40:30

TEST COMMENT: 1st Opening 10 Minutes weak blow built to 4 inches into the water  
 1st Shut-In 45 Minutes no blow back  
 2nd Opening 45 Minutes weak steady 1 1/2 inch blow  
 2nd Shut-In 90 Minutes no blow back

## PRESSURE SUMMARY



Time (Min.)	Pressure (psig)	Temp (deg F)	Annotation
0	1677.08	94.76	Initial Hydro-static
1	39.25	94.59	Open To Flow (1)
11	37.71	95.07	Shut-In(1)
55	501.93	95.37	End Shut-In(1)
56	38.40	95.27	Open To Flow (2)
108	48.77	96.50	Shut-In(2)
192	550.24	98.98	End Shut-In(2)
193	1622.52	100.94	Final Hydro-static

## Recovery

Length (ft)	Description	Volume (bbl)
30.00	oil cut mud 10% Oil 90%Mud	

## Gas Rates

	Choke (inches)	Pressure (psig)	Gas Rate (Mcf/d)



# DRILL STEM TEST REPORT

Edison Operating Company LLC

**17-19s-12w Barton**

8100 East 22nd Street North  
 Building 1900  
 Wichita, Kansas 667226  
 ATTN: Adam Kennedy

**Kuhn #1-17**

Job Ticket: 01386

**DST#: 2**

Test Start: 2019.11.03 @ 17:55:00

## GENERAL INFORMATION:

Formation: **Kansas City "H"**

Deviated: No Whipstock: ft (KB)

Time Tool Opened: 19:28:00

Time Test Ended:

Test Type: Conventional Bottom Hole (Initial)

Tester: Gene Budig

Unit No: 1

**Interval: 3314.00 ft (KB) To 3331.00 ft (KB) (TVD)**

Reference Elevations: 1882.00 ft (KB)

Total Depth: 3331.00 ft (KB) (TVD)

1874.00 ft (CF)

Hole Diameter: 7.78 inches Hole Condition: Fair

KB to GR/CF: 8.00 ft

**Serial #: 9139 Outside**

Press@RunDepth: 541.63 psig @ 3326.00 ft (KB)

Capacity: 5000.00 psig

Start Date: 2019.11.03

End Date: 2019.11.04

Last Calib.: 2019.11.04

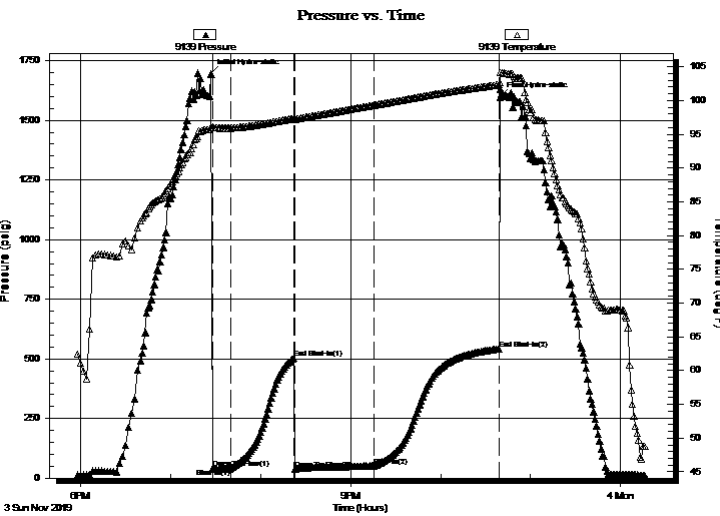
Start Time: 17:55:00

End Time: 00:16:00

Time On Btm: 2019.11.03 @ 19:27:00

Time Off Btm: 2019.11.03 @ 22:39:30

**TEST COMMENT:** 1st Opening 10 Minutes weak blow built to 4 inches into the water  
 1st Shut-In 45 Minutes no blow back  
 2nd Opening 45 Minutes weak steady 1 1/2 inch blow  
 2nd Shut-In 90 Minutes no blow back



## PRESSURE SUMMARY

Time (Min.)	Pressure (psig)	Temp (deg F)	Annotation
0	1694.06	96.07	Initial Hydro-static
1	41.51	96.07	Open To Flow (1)
13	40.92	95.93	Shut-In(1)
55	502.68	97.34	End Shut-In(1)
56	38.41	97.27	Open To Flow (2)
109	51.60	99.31	Shut-In(2)
192	541.63	102.35	End Shut-In(2)
193	1597.23	102.63	Final Hydro-static

## Recovery

Length (ft)	Description	Volume (bbl)
30.00	oil cut mud 10% Oil 90%Mud	

## Gas Rates

	Choke (inches)	Pressure (psig)	Gas Rate (Mcf/d)



# DRILL STEM TEST REPORT

**TOOL DIAGRAM**

Edison Operating Company LLC

**17-19s-12w Barton**

8100 East 22nd Street North  
 Building 1900  
 Wichita, Kansas 667226  
 ATTN: Adam Kennedy

**Kuhn #1-17**

Job Ticket: 01386

**DST#: 2**

Test Start: 2019.11.03 @ 17:55:00

## Tool Information

Drill Pipe:	Length: 3292.00 ft	Diameter:	inches	Volume: 3197923 bbl	Tool Weight:	2000.00 lb
Heavy Wt. Pipe:	Length: 0.00 ft	Diameter:	inches	Volume: 0.00 bbl	Weight set on Packer:	20000.00 lb
Drill Collar:	Length: 0.00 ft	Diameter:	inches	Volume: 0.00 bbl	Weight to Pull Loose:	48000.00 lb
				<u>Total Volume: 3197923 bbl</u>	Tool Chased	0.00 ft
Drill Pipe Above KB:	8.00 ft				String Weight: Initial	40000.00 lb
Depth to Top Packer:	3314.00 ft				Final	4000.00 lb
Depth to Bottom Packer:	ft					
Interval between Packers:	17.00 ft					
Tool Length:	47.00 ft					
Number of Packers:	2	Diameter:	6.75 inches			
Tool Comments:						

Tool Description	Length (ft)	Serial No.	Position	Depth (ft)	Accum. Lengths
------------------	-------------	------------	----------	------------	----------------

Shut In Tool	5.00			3289.00	
Hydraulic tool	5.00			3294.00	
Jars	5.00			3299.00	
Safety Joint	5.00			3304.00	
Packer	5.00			3309.00	30.00 Bottom Of Top Packer
Packer	5.00		Fluid	3314.00	
Anchor	12.00			3326.00	
Recorder	0.00	9119	Inside	3326.00	
Recorder	0.00	9139	Outside	3326.00	
Bullnose	5.00			3331.00	17.00 Bottom Packers & Anchor
<b>Total Tool Length:</b>	<b>47.00</b>				



# DRILL STEM TEST REPORT

## FLUID SUMMARY

Edison Operating Company LLC

**17-19s-12w Barton**

8100 East 22nd Street North  
 Building 1900  
 Wichita, Kansas 667226  
 ATTN: Adam Kennedy

**Kuhn #1-17**

Job Ticket: 01386

**DST#:2**

Test Start: 2019.11.03 @ 17:55:00

### Mud and Cushion Information

Mud Type: Gel Chem  
 Mud Weight: 9.00 lb/gal  
 Viscosity: 52.00 sec/qt  
 Water Loss: 9.20 in<sup>3</sup>  
 Resistivity: ohm.m  
 Salinity: 8500.00 ppm  
 Filter Cake: 1.00 inches

Cushion Type:  
 Cushion Length: ft  
 Cushion Volume: bbl  
 Gas Cushion Type:  
 Gas Cushion Pressure: psig

Oil API: deg API  
 Water Salinity: ppm

### Recovery Information

Recovery Table

Length ft	Description	Volume bbl
30.00	oil cut mud 10% Oil 90%Mud	

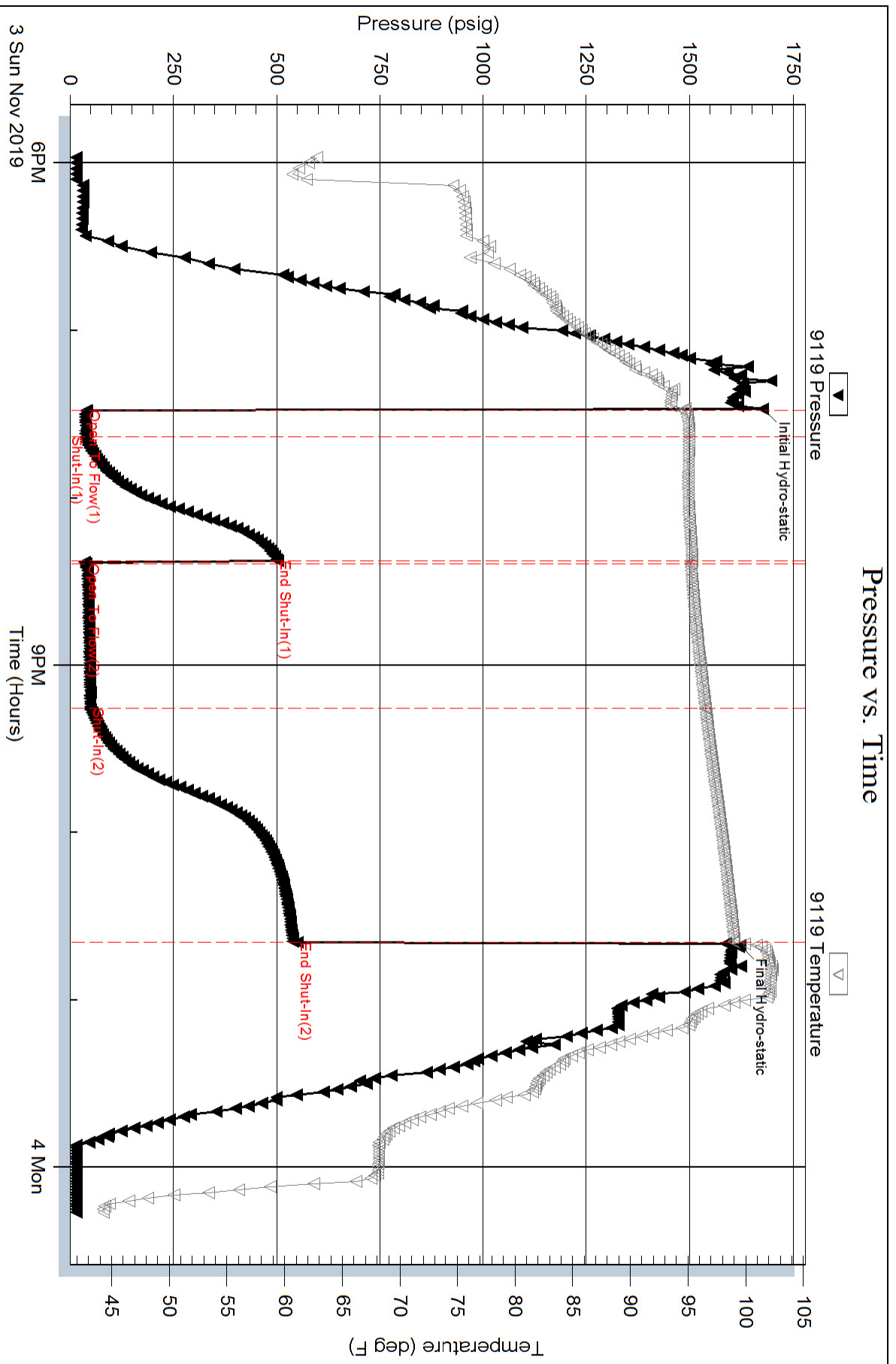
Total Length: 30.00 ft      Total Volume: bbl

Num Fluid Samples: 0      Num Gas Bombs: 0      Serial #:

Laboratory Name:      Laboratory Location:

Recovery Comments:

### Pressure vs. Time



### Pressure vs. Time

