



Liberal Yard #1717 - Phone 620-624-2277 - 1700 S. Country Estates Road, Liberal KS 67901

PRESSURE PUMPING

Job Log

Customer:	Obrien Energy	Cement Pump No.:	37223 19572 12HRS	Operator TRK No.:	78868		
Address:	18 Congress St. Suite 207	Ticket #:	1718 19686 L	Bulk TRK No.:	30464 37547 Corey	27808 19578 Angel	
City, State, Zip:	Portsmouth NH 03801	Job Type:	Z42 - Cement Surface Casing				
Service District:	1718-Liberal KS	Well Type:	OIL				
Well Name and No.:	Preedy 7-4	Well Location:	4,33,29	County:	Meade	State:	KS

Type of Cmt	Sacks	Additives	Truck Loaded On		
A-Con' Blend	375	3% Calcium Chloride, 1/4# Polyflake, .2% WCA1	30464 37547 Corey	Front	Back
Premium Plus Cement	150	2% Calcium Chloride, 1/4# Polyflake	27808 19578 Angel	Front	Back
				Front	Back

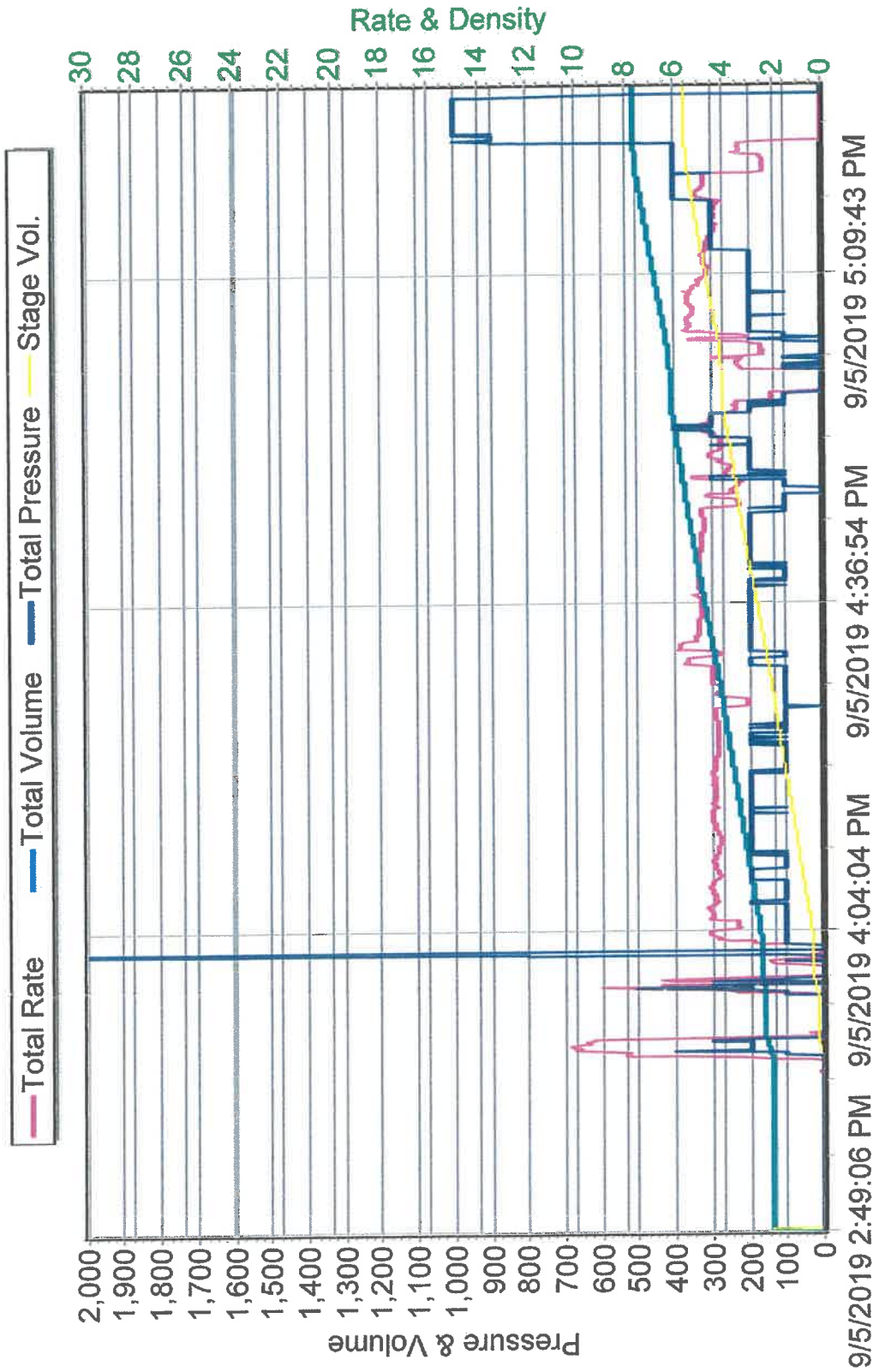
Lead/Tail:	Weight #1 Gal.	Cu/Ft/sk	Water Requirements	CU. FT.	Man Hours / Personnel	
Lead:	11.4	2.92	17.76	1095	TT Man Hours:	50
Tail:	14.8	1.34	6.33	201	# of Men on Job:	4

Time (am/pm)	(BPM)	Volume (BBLS)	Pumps		Pressure(PSI)		Description of Operation and Materials
			T	C	Tubing	Casing	
10:30am							Arrived at location
14:00pm							Spot trucks/Rig up
15:12pm							Safety meeting
16:00pm						1500	Pressure test lines to 1500psi
16:01pm	3	10				zero	Pump 10bbbls of fresh water spacer
16:04pm	5	195				100	Pump 195bbbls of lead from 375sks at 11.4lbs
16:46pm	5	35				100	Pump 35bbbls of tail from 150sks at 14.8lbs
16:58pm							Shut down/Drop plug/Wash pump and lines
16:59pm							Start displacement of 97bbbls with fresh water
17:04pm	5	20				50	20bbbls gone
17:08pm	5	40				50	40bbbls gone
17:12pm	5	60				120	60bbbls gone
17:16pm	5	80				300	80bbbls gone
17:18pm	5	87				350	87bbbls gone/Slow down rate
17:21pm	3	97				850	Bump plug/Hold pressure for 5 minutes
17:26pm							Release pressure to check if float holds
							Got 50 bbls of cement to Surface
							Rig down
							Job Completed
							Thanked company and rig crew

Size Hole	12 1/4	Depth	1586		TYPE	Flapper	
Size & Wt. Csg.	8 5/8 24#	Depth	1575	New / Used	Flapper	1527	Depth
Landing Psi	500+	Depth			Retainer		Depth
Shoe Joint	48	Type			Perfs		CIBP

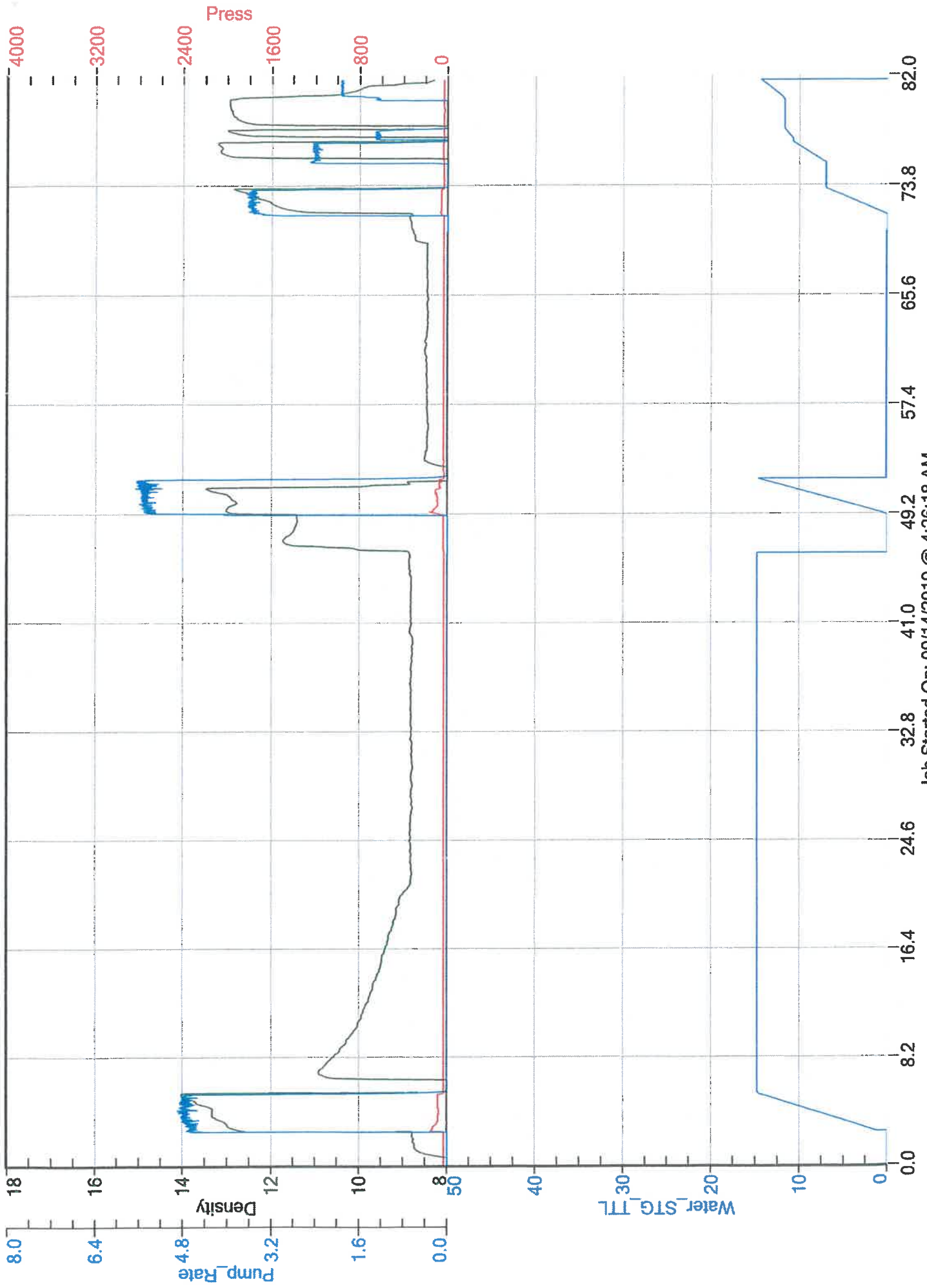
Customer Signature:		Basic Representative:	Victor A. Corona
		Basic Signature:	
		Date of Service:	9/5/2019

O'Brien Energy Preedy 7-4 8 5/8 Surface 9/5/2019



O'Brien Energy

Preedy #7-4



Job Started On: 09/14/2019 @ 4:26:18 AM