

Tim J. Lauer

Petroleum Geologist

Office 316.832.0530
Cell 316.253.1275

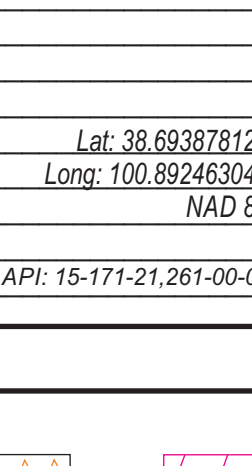
GEOLOGIST'S REPORT

DRILLING TIME AND SAMPLE LOG

COMPANY	Shakespeare Oil Company, Inc	
LEASE	# 1-6 Conner	
FIELD	APPX C SE NE	
LOCATION	1945' FNL, 625' FEL, NE/4	
SEC	6	TWSP 16S RGE 32W
COUNTY	Scott	STATE Kansas
CONTRACTOR	Southwind Drilling Rig #8	
SPUD	10-11-2019	COMP 10-21-2019
RTD	4775'	LTD 4774'
MUD UP	3430'	TYPE MUD Chemical
SAMPLES SAVED FROM	3800'	TO RTD
DRILLING TIME KEPT FROM	3800'	TO RTD
SAMPLES EXAMINED FROM	3800'	TO RTD
GEOLOGICAL SUPERVISION FROM	3740'	TO RTD
GEOLOGIST ON WELL	Tim J. Lauer	

ELEVATIONS	KB 3025'
DF	
GL	3015'
Measurements Are All From	Kelly Bushing
CASING	
CONDUCTOR	8-5/8" @ 264'
PRODUCTION	
ELECTRICAL SURVEYS	Pioneer OH: DCLP, DIL, MJ Engineer: Ian Mabb

FORMATION TOPS	ELECTRIC LOG	SAMPLE LOG
Base Anhydrite	2430 (+595)	2431 (+594)
Heebner	3962 (-937)	3963 (-938)
Lansing	4002 (-977)	4002 (-977)
Stark	4266 (-1241)	4264 (-1239)
Marmaton	4400 (-1375)	4403 (-1378)
Pawnee	4480 (-1455)	4481 (-1456)
Cherokee Shale	4558 (-1533)	4560 (-1535)
Johnson Zone	4602 (-1577)	4604 (-1579)
Mississippian	4694 (-1669)	4695 (-1670)
Total Depth	4774 (-1749)	4775 (-1750)



ELEVATIONS
KB 3025'
GL 3015'

COMPANY & WELL
Shakespeare #1-6 Conner
LOCATION
945' FNL, 625' FEL, NE/4

SEC 6 TWSP 16S RGE 32W
STATE Kansas
COUNTY Scott

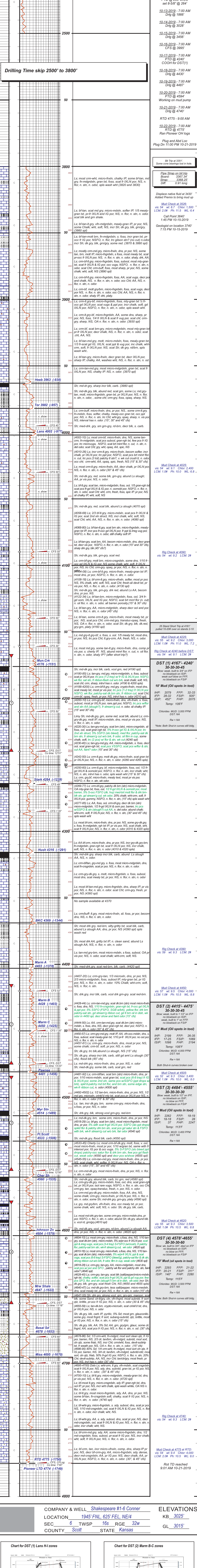
REMARKS
Due to drill stem test results, and log evaluation, operator elected to plug and abandon the location without any further testing.

Respectfully submitted,
Tim J. Lauer
10/22/2019

Lat: 38.693878124
Long: 100.892463047
NAD 83
API: 15-171-21,261-00-00

LEGEND

Anhydrite	Sandstone	Limestone	Shale	Carb Sh	Cherty LS	Chert	Dolomite
-----------	-----------	-----------	-------	---------	-----------	-------	----------



COMPANY & WELL	Shakespeare #1-6 Conner	ELEVATIONS	KB 3025'
LOCATION	1945' FNL, 625' FEL, NE/4	DF	
SEC	6 TWSP 16S RGE 32W	GL	3015'
COUNTY	Scott	STATE	Kansas

