



**TRILOBITE
TESTING, INC.**

DRILL STEM TEST REPORT

Shakespeare Oil Co, Inc

12 17s 35w Wichita, Ks

202 W Main St.
Salem, IL 62881

Mazanec 1-12

Job Ticket: 66151

DST#: 2

ATTN: Tim Lauer

Test Start: 2019.10.30 @ 16:16:00

GENERAL INFORMATION:

Formation: **Marmaton A-C**

Deviated: No Whipstock: ft (KB)

Time Tool Opened: 18:27:30

Time Test Ended: 23:52:00

Test Type: Conventional Bottom Hole (Reset)

Tester: Bradley Walter

Unit No: 78

Interval: 4468.00 ft (KB) To 4580.00 ft (KB) (TVD)

Reference Elevations: 3174.00 ft (KB)

Total Depth: 4580.00 ft (KB) (TVD)

3164.00 ft (CF)

Hole Diameter: 7.88 inches Hole Condition: Good

KB to GR/CF: 10.00 ft

Serial #: 8522

Inside

Press@RunDepth: 26.96 psig @ 4469.00 ft (KB)

Capacity: 8000.00 psig

Start Date: 2019.10.30

End Date:

2019.10.30

Last Calib.:

2019.10.30

Start Time: 16:16:05

End Time:

23:51:59

Time On Btm:

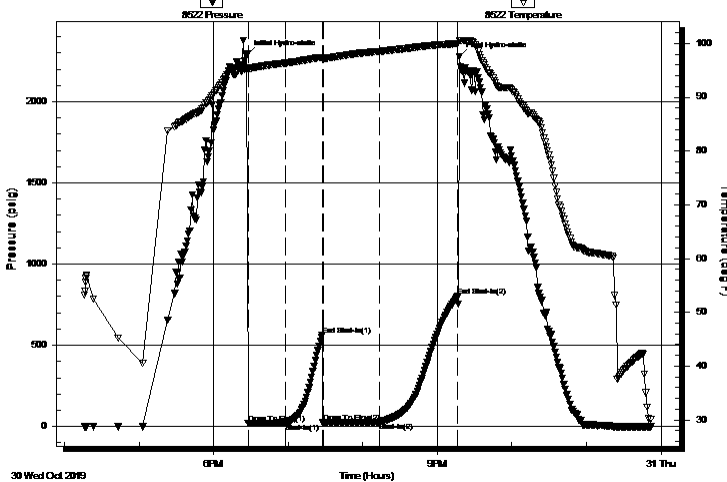
2019.10.30 @ 18:26:45

Time Off Btm:

2019.10.30 @ 21:17:45

TEST COMMENT: 30- IF: 1.8" blow .
30- IS: No return.
45- FF: 1.9" blow
60- FSI: No return.

Pressure vs. Time



PRESSURE SUMMARY

Time (Min.)	Pressure (psig)	Temp (deg F)	Annotation
0	2287.05	95.38	Initial Hydro-static
1	19.52	95.09	Open To Flow (1)
31	21.87	96.35	Shut-In(1)
61	560.33	97.42	End Shut-In(1)
62	23.46	97.15	Open To Flow (2)
107	26.96	98.52	Shut-In(2)
170	799.95	99.98	End Shut-In(2)
171	2278.35	100.53	Final Hydro-static

Recovery

Length (ft)	Description	Volume (bbl)
30.00	socm 3o 97m	0.42

* Recovery from multiple tests

Gas Rates

	Choke (inches)	Pressure (psig)	Gas Rate (Mcf/d)



**TRILOBITE
TESTING, INC.**

DRILL STEM TEST REPORT

FLUID SUMMARY

Shakespeare Oil Co, Inc

12 17s 35w Wichita, Ks

202 W Main St.
Salem, IL 62881

Mazanec 1-12

Job Ticket: 66151

DST#: 2

ATTN: Tim Lauer

Test Start: 2019.10.30 @ 16:16:00

Mud and Cushion Information

Mud Type: Gel Chem

Cushion Type:

Oil API:

0 deg API

Mud Weight: 9.00 lb/gal

Cushion Length:

ft

Water Salinity:

0 ppm

Viscosity: 61.00 sec/qt

Cushion Volume:

bbl

Water Loss: 7.98 in³

Gas Cushion Type:

Resistivity: ohm.m

Gas Cushion Pressure:

psig

Salinity: 5000.00 ppm

Filter Cake: 1.00 inches

Recovery Information

Recovery Table

Length ft	Description	Volume bbl
30.00	socm 3o 97m	0.421

Total Length: 30.00 ft Total Volume: 0.421 bbl

Num Fluid Samples: 0

Num Gas Bombs: 0

Serial #:

Laboratory Name:

Laboratory Location:

Recovery Comments:

Pressure vs. Time

