

Woolsey Operating Company, LLC

Scale: 1" = 240' (60') Imperial
Measured Depth Log

Well Name: **HUXMAN #1**
 Location: **Section 19 - Township 21 South - Range 1 West**
 License Number: **33168**
 Spud Date: **September 13, 2019**
 Surface Coordinates: **E/2 W/2 SE 1550' FSL & 1750' FEL**
 Region: **McPherson Co., Kansas**
 Drilling Completed: **September 20, 2019**

Bottom Hole Coordinates: **1487' K.B. Elevation (ft): 1500'**
 Ground Elevation (ft): **2000'**
 Logged Interval (ft): **To: 3450' Total Depth (ft): 3450'**
 Formation: **Topeka >>> Maquoketa**
 Type of Drilling Fluid: **Chemical Mud displaced at 2210'**
 Printed by **MudLog from WellSight Systems 1-800-447-1534 www.WellSight.com**

Company: Woolsey Operating Company, LLC
Address: 125 N. Market, Suite 1000
 Wichita, KS 67202

OPERATOR
Geologist: Bill Klaver
Company: Woolsey Operating Co. LLC
Address: 125 N. Market, Wichita Kansas, 67202

Comments:
 Surface Casing: Spud at 7:15 pm on September 13, 2019, Ran 6 joints of 8 5/8" X 24#ft casing to 265' KB. Cement with 200 sx 60/40 poz mix, 3% cc. 114# cello flake. Plug down 3:30 am on September 14, 2119, cement did circulate.
 Production Casing: None ran
 Deviation Surveys: 75 at 272', 50 at 521', 25 at 1051', 1 at 1489', 1.5 at 2020', 2 at 2178', 2 at 2365', 1.25 at 2802', 1.5 at 3021', 1.5 at 3210', 2 at 3385', 2 at 3450'
 Pipe Strap @ 2675', Strap: 2677.73', Strap: 2675.77', Strap 1.96' long. No correction was made to the board.
 Duke Drilling Rig 7 Bit Record:
 1) 12 1/4" Hughes Tool Co. R 7 in at 0' out at 265'
 2) 7 7/8" OK BD52C in at 265' out at 3450'

Gas Detector: Pason Systems
 Mud System: Mud-Co., Jason Whiting
 DST: Tri-Phase Testing, Leal Cason, Tester
 E-Logs: ELL, CNL, FDC w/ P/ER & Calper, Dual Induction Laterolog w/SP, Jason Cappellucci, Engineer
 Company Rep: Alan Dick

DSTs:
 DST #1, Hunton, 3366'-3385', 30°-60°-60°-60°, Weak blow died, Recovered: 5' drilling mud, IHP 1702, IFP 18-19, ICIP 535, FFP 201-31, FCIP 511, FHP 1640. BHT 112 degrees

CREWS:
 Galen Roach, Pusher
 Charles Stout, Morning
 Scott Edwards, Days
 Steven "Skippy" Green, Evening

ROCK TYPES

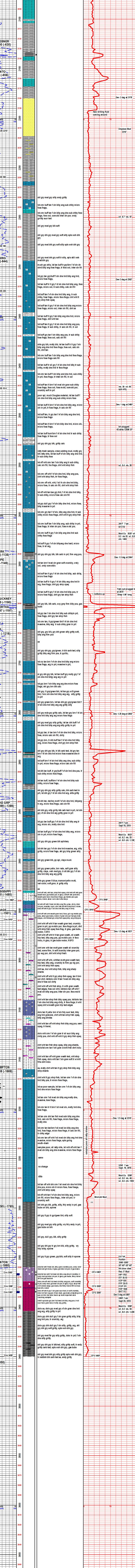
Anhy	Shy dolo	Sstst	Shale 3
Bent	Dol	Ss	Silly dol
Brec	Gyp	Black sh	Dol Imst
Chl	Sdy limest	Gry sh	Dol 2
Chst	Lmst	Shale	Granite wash
Coal	Lmst	Shylstst	Lmst
Congl	Shale	Ss 2	Calc dol
Sdy dolo			Shale 3

ACCESSORIES

Chlorite	Algae	Pelec	Grysh
Dol	Amph	Pellet	Gryslt
Sand	Belm	Pisofite	Lms
Sily	Bioclst	Plant	Sandylms
	Bryoa	Strom	Sh
	Cephal	Foss	Shstn
	Coral	Oomoldic	
	Crin		
	Fish		
	Foram		
	Fossil		
	Gastro		
	Oolite		
	Ostra		

TEXTURE

Boundst
Chalky
Cryxin
Carthy
Finexin
Grainst
Lithogr
Microxln
Mudst
Packet
Wackest



Woolsey Operating Company, LLC
 Huxman #1
 1550' FSL & 1750' FEL
 E/2 W/2 SE
 Sec. 19 - Twp 21 South - Rge 1 West
 McPherson County, Kansas
 Field: WCVinsinger
 API # 15-113-2195-00-00
 CG, EL 1487' KB 1900'