



Scale 1:240 Imperial

Well Name: CONNER 1-17  
Surface Location: NE-NE-SE-SE 17-23S-24W  
Bottom Location:  
API: 15-083-21971-00-00  
License Number: 5004  
Spud Date: 7/19/2019 Time: 6:45 PM  
Region:  
Drilling Completed: 7/28/2019 Time: 8:23 PM  
Surface Coordinates: 1290' FSL & 185' FEL  
Bottom Hole Coordinates:  
Ground Elevation: 2383.00ft  
K.B. Elevation: 2391.00ft  
Logged Interval: 3700.00ft To: 4725.00ft  
Total Depth: 4725.00ft  
Formation: MISSISSIPPIAN  
Drilling Fluid Type: Chemical Mud

**OPERATOR**

Company: Vincent Oil Corporation  
Address: 200 W Douglas Ave  
Ste 725  
Wichita, KS 67202  
Contact Geologist: Dick Jordan  
Contact Phone Nbr: 316.262.3573  
Well Name: CONNER 1-17  
Location: NE-NE-SE-SE 17-23S-24W  
API: 15-083-21971-00-00  
Pool: WILDCAT  
State: KANSAS  
Field: WILDCAT  
Country: USA

**CONTRACTOR**

Contractor: Duke Drilling Co., Inc.  
Rig #: 2  
Rig Type: Mud Rotary  
Spud Date: 7/19/2019 Time: 6:45 PM  
TD Date: 7/28/2019 Time: 8:23 PM  
Rig Release: 7/29/2019 Time: 12:00 PM

**LOGGED BY**

Company: Vincent Oil Corporation  
Address:  
Phone Nbr:  
Logged By: Geologist Name: Tom Dudgeon

**SURFACE CO-ORDINATES**

Well Type: Vertical

Well Type: Vertical  
 Longitude: -99.9728158  
 Latitude: 38.0478177  
 N/S Co-ord: 1290' FSL  
 E/W Co-ord: 185' FEL

### ELEVATIONS

K.B. Elevation: 2391.00ft      Ground Elevation: 2383.00ft  
 K.B. to Ground: 8.00ft

### TOTAL DEPTH

Measurement Type:	Measurement Depth:	TVD:
RTD	4725.00	4727.00
LTD	4727.00	4727.00

### DRILLING FLUID SUMMARY

Type	Date	From Depth	To Depth
Chemical Mud	7/24/2019	3450.00ft	4725.00ft

### OPEN HOLE LOGS

Logging Company: ELI  
 Logging Engineer: Gus Pfanenstiel  
 Truck #: 1523  
 Logging Date: 7/29/2019      Time Spent: 2  
 # Logs Run: 2      # Logs Run Successful: 2

### LOGS RUN

Tool	Logged Interval	Logged Interval	Hours	Remarks	Run #
Dual Induction	0.00ft	4727.00ft	2.00		1
Den/Neu Den/PI	3700.00ft	4727.00ft	2.00		1

### LOGGING OPERATION SUMMARY

Date	From	To	Description Of Operation
7/23/2019	0.00ft	47227.00ft	Logs Run Successfully

### CASING SUMMARY

	Surface	Intermediate	Main		
Bit Size	12.25 in		7.88 in		
Hole Size	12.25 in		7.88 in		
	Size	Set At	Type	# of Joints	Drilled Out At
Surf Casing	8.625 in	724' ft	23#	18	7/21/2019 3:30 AM
Int Casing					
Prod Casing					

### CASING SEQUENCE

Type	Hole Size	Casing Size	At
Surface Casing	12.25 in	8.63	0.00 ft

### NOTES

7/19/2019 Moved in rotary tools and rigged up. Spud well in at 6:45 PM 7/19/2019. Drilling 12 1/4" surface hole  
 7/20/2019 At 399' Drilling surface hole. Drilled 12 1/4" surface hole to 737', CTCH, ran wiper trip, TOH with bit, ran 18 joints new 8 5/8", 23# surface casing. Set casing at 724' and cemented with 150 sx MDC (3%CC & 1/2# Flow-seal/sx) and 150 sx Common (2% Gel, 3% CC & 1/2# Flo-seal/sx). Cement did circulate. Plug down at 5:30 PM 7/20/2019. Drilled plug at 3:30 AM 7/21/2019.  
 7/21/2019 At 845', drilling ahead  
 7/22/2019 At 2070', drilling ahead  
 7/23/2019 At 2820', drilling ahead  
 7/24/2019 At 3345', drilling ahead, displaced mud system at 3450'  
 7/25/2019 At 3815', drilling ahead  
 7/26/2019 At 4220', drilling ahead  
 7/27/2019 At 4510', circulating following short trip, drill ahead to 4663', tripped out for DST #1, pipe strap at 4663' was 4.92' short to the board. DST #1 4574' to 4663' (Conglomerate Sand)  
 7/28/2019 At 4663', DST #1 1 4574' to 4663' in progress  
 DST #1 4574' to 4663' (Conglomerate Sand)

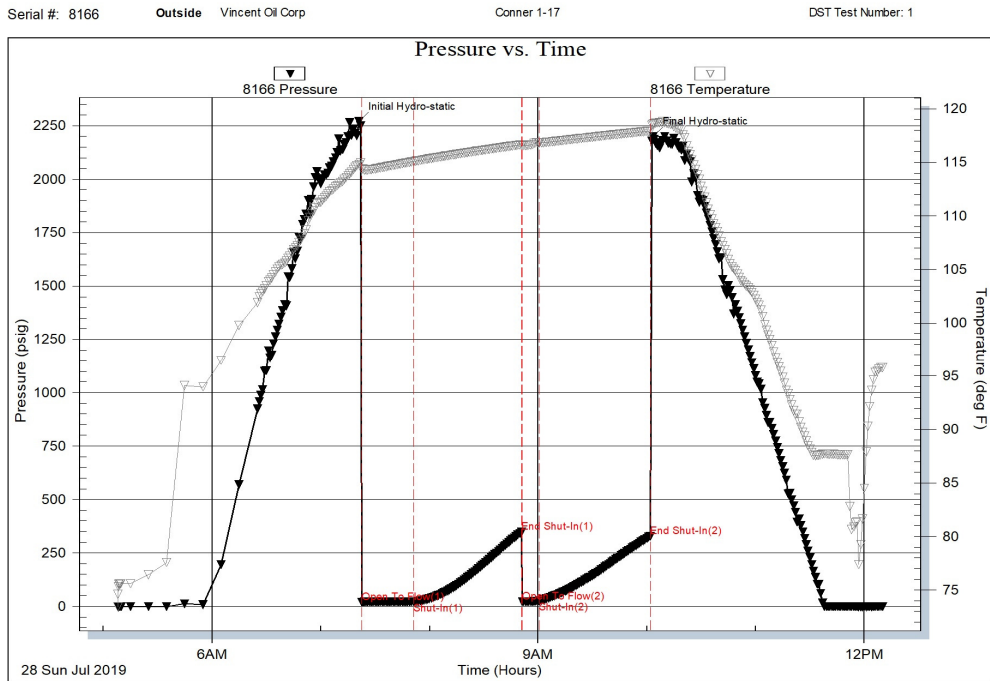
DST #1 4574 to 4663 (Conglomerate Sand)  
 30"-60"-10"-60"  
 1st Open: Weak Blow  
 2nd Open: No Blow, Flushed tool, No Blow  
 Recovered  
 5' Mud  
 IFP 19 -21# FFP 21 - 24#  
 ISIP 347# FSIP 326#  
 BHT 117° F

Drilled ahead to RTD of 4725'. TOOH for logs, Ran Dual Induction and Porosity log. Found LTD at 4727'.  
 7/29/2019 At 4725', TOOH, laying down drill collars and drill pipe, loaded wellbore with heavy mud, TIH with plugging stands. Set cement plugs through drill pipe as follows: 50 sx at 1620', 50 sx at 770' and 20 sx at 60' to surface. Plugged the rathole with 30 sx. Plug down at 12:00 PM 7/29/2019. Jetted and cleaned pits. Released rig.

REFERENCE WELLS:

A	B
Malone Exploration	W.E. Carl
Clutter #1	Berger #1-17
NW-SE SW-NW	
Sec. 16-23S-24W	Sec. 17-23-24W

	SAMPLE TOP REF.		WELL ELECTRIC LOG REF. WELL	
	A	B	A	B
Anhydrite	1568 (+823) +24		1593 (+798) +2	
Heebner Shale	3941 (-1550) -7 -11	3945 (-1554) -11 -16		
Brown Limestone	4017 (-1626) -8 -15	4019 (-1628) -10 -17		
Lansing	4029 (-1638) -10 -18	4030 (-1639) -11 -19		
Stark Shale	4296 (-1905) +3 -13	4298 (-1907) +1 -15		
Base Kansas City	4412 (-2021) -3 -19	4410 (-2019) -1 -21		
Marmaton	4432 (-2041) -3 -7	4434 (-2043) -5 -9		
Pawnee	4493 (-2102) -2 -12	4495 (-2104) -4 -14		
Fort Scott	4528 (-2137) -3 -8	4531 (-2140) -6 -11		
Cherokee Shale	4547 (-2156) -2 -9	4550 (-2159) -5 -12		
Base Cherokee Lime	4636 (-2245) Flt -11	4640 (-2249) -4 -14		
Mississippian	4664 (-2273) +9 -2	4668 (-2277) +5 -6		
RTD / LTD	4725 (-2334)	4727 (-2336)		



ROCK TYPES

Coal	Lmst fw<7	Shgy	Shcol
Dolsec	Lmst fw>7	Shblk	Cht vari

# ACCESSORIES

**FOSSIL**  
 F Fossils < 20%  
 ϕ Oolite

**STRINGER**  
 Sandstone

## OTHER SYMBOLS

**POROSITY TYPE**

- × Intercrystalline
- ϕ Interoolitic
- V Vuggy
- P Pinpoint
- ∩ Moldic
- O Organic
- F Fracture
- e Earthy
- ▣ Fenestral

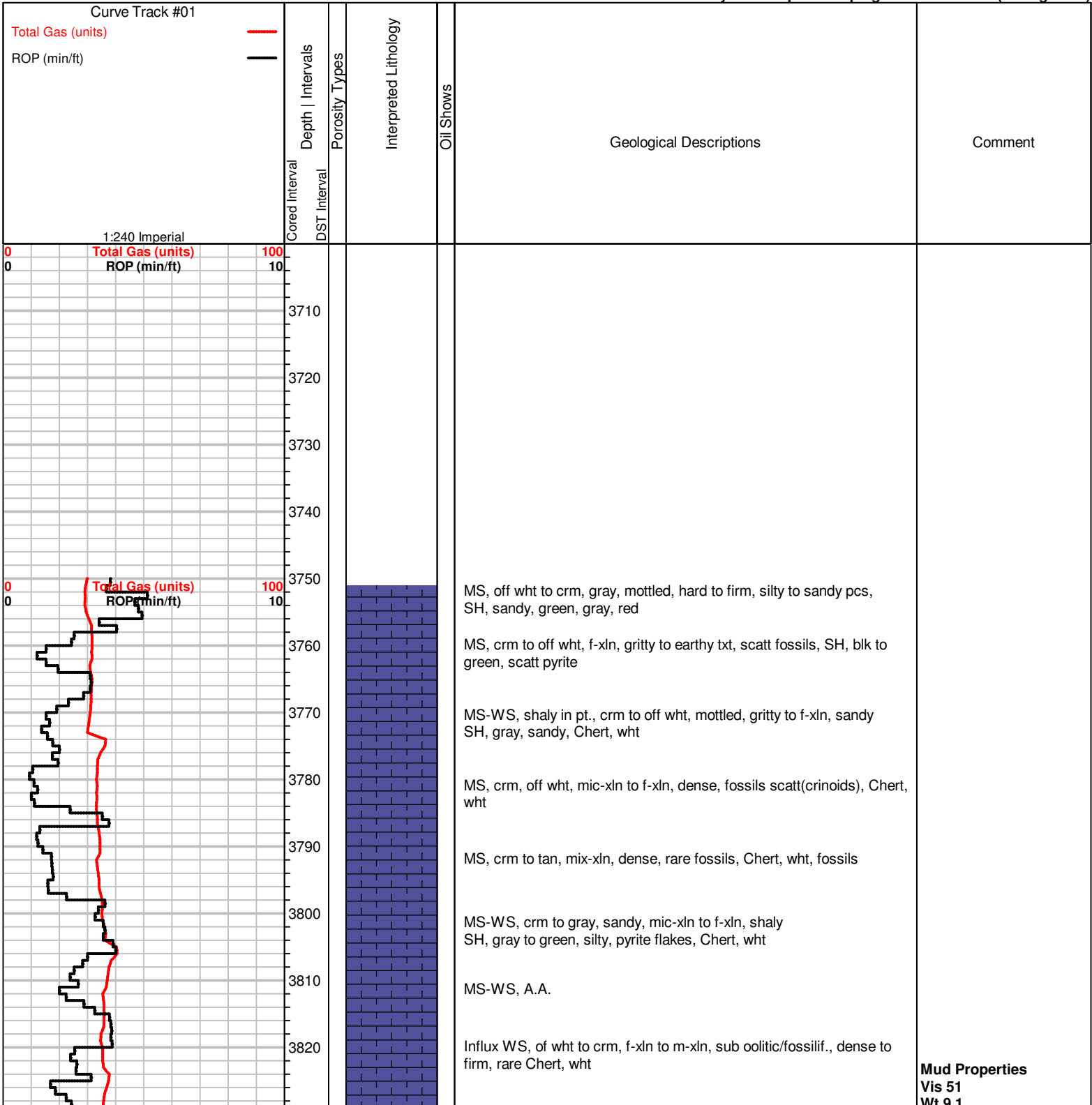
**OIL SHOWS**

- Even Stn
- Spotted Stn 50 - 75 %
- Spotted Stn 25 - 50 %
- Spotted Stn 1 - 25 %
- Questionable Stn
- D Dead Oil Stn
- Fluorescence

**INTERVALS**

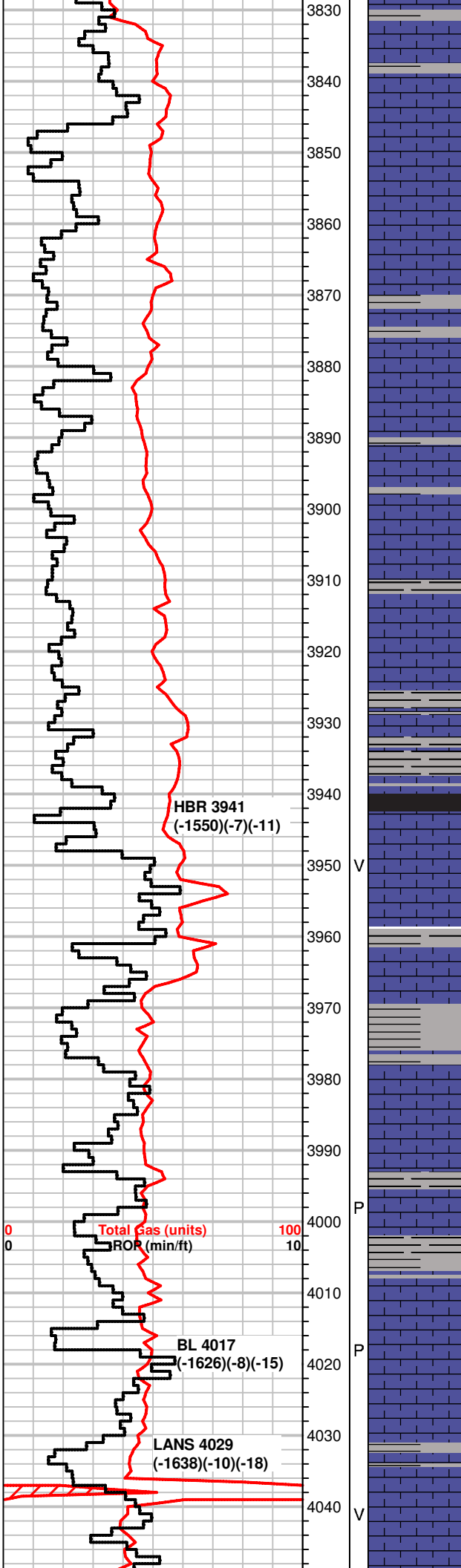
- Core
- DST

Printed by GEOstrip VC Striplog version 4.0.8.15 (www.grsi.ca)



**Mud Properties**  
 Vis 51  
 Wt 9.1

WT 9.1  
LCM 1#  
Filt 8.0  
CI 4,000  
pH 11.0



SH, blk, to gray, reds, waxy in pt., sandy pcs mostly, MS, crm to tan, f-xln, fossils, chalky in pt., firm, Chert, wht

SH, blk to gray, green, MS, A.A.

WS-MS, brn to crm, mottled, f-xln to m-xln, fossils, calcite veins, fn-oomoldic pcs rare, SH, grays

MS, crm to tan, f-xln to chalky, mic to f-xln, dense, fossils scatt, sandy in pt, SH, fresh, blk, green

SH, blk to green, MS, A.A.

MS, crm to tan, chalky to f-xln pcs, fossils scatt, sandy in pt., Chert, wht, SH, gray to green

MS-WS, crm to tan, f-xln to m-xln, gritty txt, micro oolitic, firm to friable, SH, blk to gray

SH, gray to green, waxy to silty pcs, MS, tan to crm, f-xln, scatt fossils, gritty in pt.,

SH, blk to grays, pyrite, some pcs carb.

some SH, gray, red/green, silty MS, tan to crm, f-xln, shaly to silty in pt., scatt Chert, wht, fossils

influx SH, blk, carb, A.A.

MS-WS, tan to crm, f-xln to m-xln, fossilif., chalky pcs, dense, some Chert, wht, rare vuggy por.

SH, brn to grays, MS brn to tan, crm, mottled pcs, f-gr oolitic to gritty txt, fossilif pcs, SH, gray, sandy to silty

inc in MS, tan, fossils, SH, grays

MS, crm to lt. tan, f-xln, chalky to f-xln, dense to friable pcs, Chert, wht

MS, crm to lt. gray, f-xln, fossils, dense, Cherty, SH, grays, pyrite, silty, some carb.

MS, crm to tan, brn, mic-xln to f-xln, dense, some chalky, fossils, SH, gray to gren, silty, rare pp por.

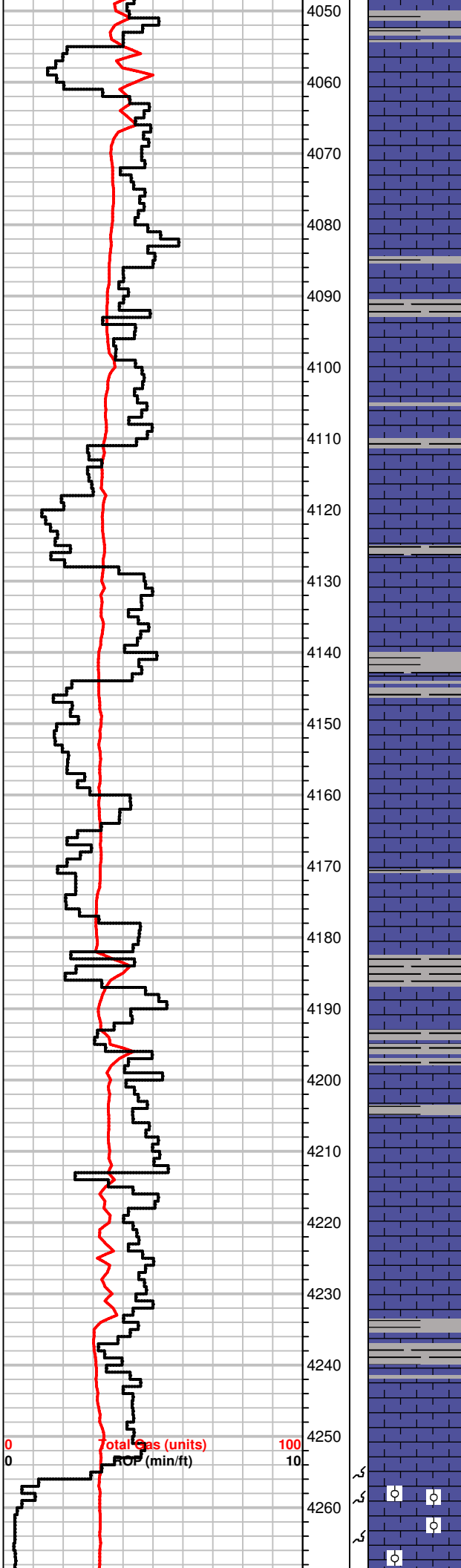
MS, tan to brn, f-xln, dense to friable, scatt fossils SH, grays, blk, green, Chert, wht

MS, crm to lt. gray, tan, shaly pcs, f-xln, fossils, rare dead stn, no cut, no odor, pp por.

MS-WS, gray to crm, mottled pcs, f to m-xln, dense, oolitic to fossilif., scatt Chert, wht, some SH, gray to green

Influx MS, off wht to crm, f-xln to sucrosic txt, gritty, dense, sub oolitic pcs, Chert, crm to off wht, dull fluor, vuggy por.

Testing Gas System



MS, A.A., Chert, wht, fossils  
SH, gray to green, some fossils

MS, crm to tan, f-xln to chalky, soft, some dense, Chert, wht to gray, scatt gray SH

MS, crm, gritty to sucrosic txt, chalky in pt., firm, Chert, wht, SH, dk. gray

MS-WS, crm to tan, f-xln to mic-xln, dense, brittle, lesser SH, grays, Chert, wht, fossils

SH, blk to gray, green, silty to limey in pt., MS, crm, f-xln, hard to brittle, scatt fossils, shaly in pt., Chert, wht

MS, crm to brn, f-xln, dense, fossils scatt, hard, Chert, wht to brn, some SH, gray to green

MS, crm to tan, f-xln, f-gr oolitic pcs scatt, dense, hard, NS  
SH, greens to gray, pyrite

MS, crm to lt. gray, f-xln to gritty txt, dense, Chert, wht

MS, crm to tan, f-xln, chalky, most dense, calcite, Chert, smoky, white, some SH, green, gray, scatt carb pcs.

MS, crm to tan, f-xln, some chalky, most dense A.A., scatt SH, grays to green

SH, brn to dk. gray, carb in pt., MS off wht to tan, f-xln, dense, fossilif., Chert, wht, NS

MS, crm to tan, f-xln, soft/friable, chalky in pt. NS  
SH, platy pcs, gray to green

MS, crm, gritty to m-xln, chalky, firm, some dense, scatt fossils, sandy pcs scatt, Chert, wht  
SH, grays, green, silty

SH, green to gray, rare blk, carb., MS, crm to tan, A.A., some lt. gray, to brn, shaly in pt., NS

SH, blk to brn, gray, sli. carb. hard  
MS, crm to brn, f-xln to earthy, chalky in pt., silty, some fossil frgmts, NS, Chert, wht fossils.

MS-WS, crm to lt. brn, f-xln to mic-xln, dense, m-gr oolitic pcs, rare SH, blk, green

MS, off wht to crm, mix-xln to earthy in pt., chalky, scatt ooids, dense, Chert, wht, SH, A.A.

MS, brn to crm, mic-xln, dense, f-xln, hard, scatt fossil frgmts, dull fluor, NS

MS-WS, crm to brn, f-xln to earthy, gritty pcs, sub oolitic, Chert, opaque to wht

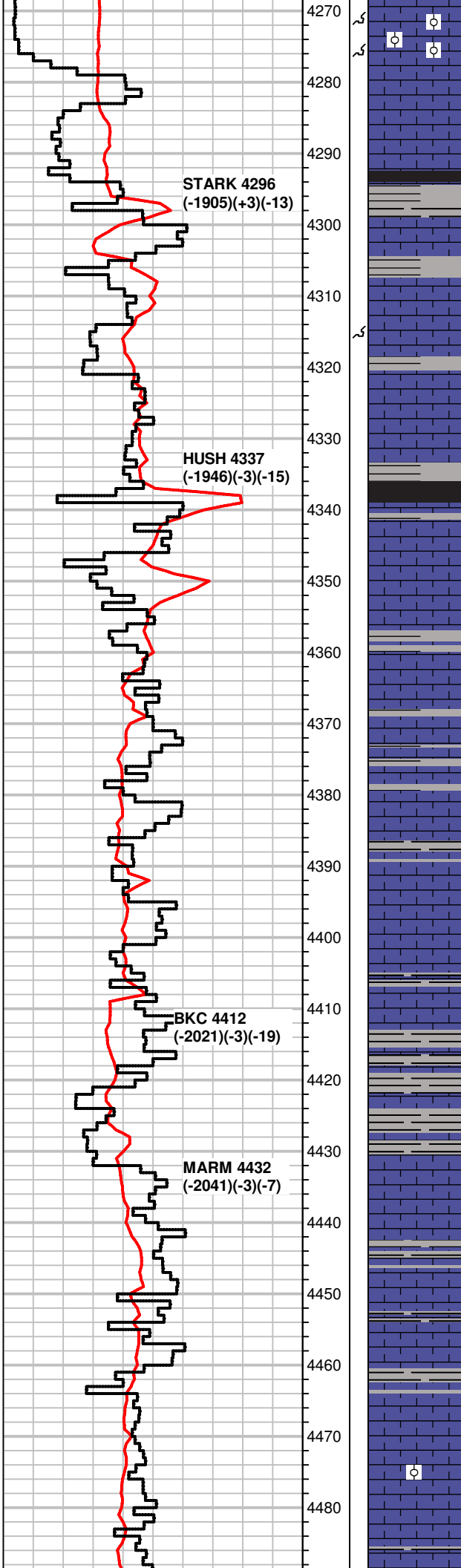
SH, dk. gray to green, MS, crm to off wht, tan, chalky to f-xln, soft to dense pcs, Chert, wht, NS

WS-MS, gray to brn, f to m-xln, m-gr oolitic to fossilif pcs, firm to brittle, faint odor in bag, Chert, wht, NS

MS-WS, A.A., crm to tan, f-xln, fossilif, oolitic/oomoldic por.

MS-WS, crm to tan, oolitic/oomoldic A.A., NS

**Mud Properties**  
 Vis 48  
 Wt 9.5  
 LCM 1#  
 Filt 10.0  
 CI 5,000  
 pH 10.0



MS-W.S, crm to tan, oolitic/oomoldic A.A., NS

SH, lt. gray to green  
MS-W.S, brn to gray, m-gr oolitic

some SH, blk to green, carb., MS-W.S, A.A., inc in crm to gray pcs, f-xln, chalky, fossilif, dense, NS  
SH, blk, gassy, carb

MS-W.S, crm to off wht, lt. gray, dense, scatt fossils, NS

MS, tan to crm, off wht, f-xln, dense, gritty pcs, some oomoldic pcs, NS

MS, tan to brn, f-xln to mic-xln, brittle to dense, some pcs m-gr oolitic, fossilif. in tite calc mtrx, earthy pcs scatt, some cherty, NS

SH, blk, carb.  
MS, crm to tan, fossils, dense, pyrite rare, Chert, wht, NS

MS, off wht to crm, f-xln to mic-xln, dense to hard, fossils, Chert, brn, wht, SH, grays, green

MS, off wht to crm, f-xln hard to firm, scatt fossils, Chert, smoky  
SH, blk to gray

MS, crm to lt. gray, f-xln to earthy pcs, dense dense, rare fossils, scatt chalky pcs, some shaly, SH, blk to gray

MS, tan to crm, f-xln, hard/dense, fossils scatt, NS

MS-W.S, lt. gray to tan/crm, f-xln, mottled pcs, Chert, wht, some SH, grays

MS, A.A., gritty to m-xln pcs, SH, grays, carb., blk, gray, pyrite

SH, gray, red, silty, MS, crm to gray, f-xln, shaly, hard, gritty pcs, NS

MS-W.S, crm to tan, gray, f-xln, some waxy looking, shaly to earthy, fossils, NS  
SH, gray to green

MS, crm to lt. gray, shaly, hard, NS, SH, blk, grays, green

MS-W.S, crm to tan, f-xln, hard/dense, scat fossils, NS  
scatt SH, blk to grays

MS, gray to tan/crm, f-xln, shaly in pt., hard, fossilif.  
scatt SH, grays

MS, crm to tan, f-xln to chalky pcs, most dense, lesser fossils, SH, blk to green

MS, crm to tan, mic to f-xln, hard, sub oolitic in pt., fossils, chalky pcs scatt, NS, SH grays

MS, tan to crm, mic to f-xln, A.A., Chert, wht, fossilif.

+ 20 UGK, shale gas

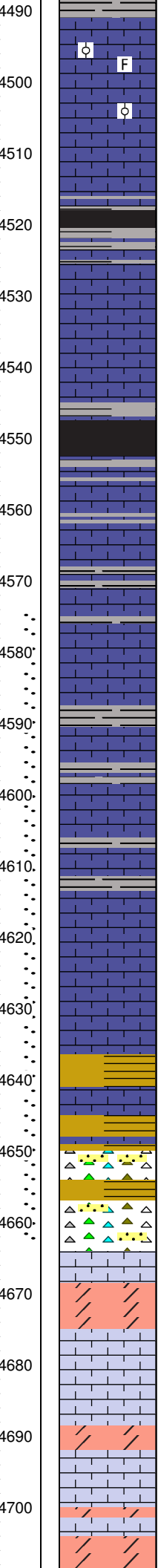
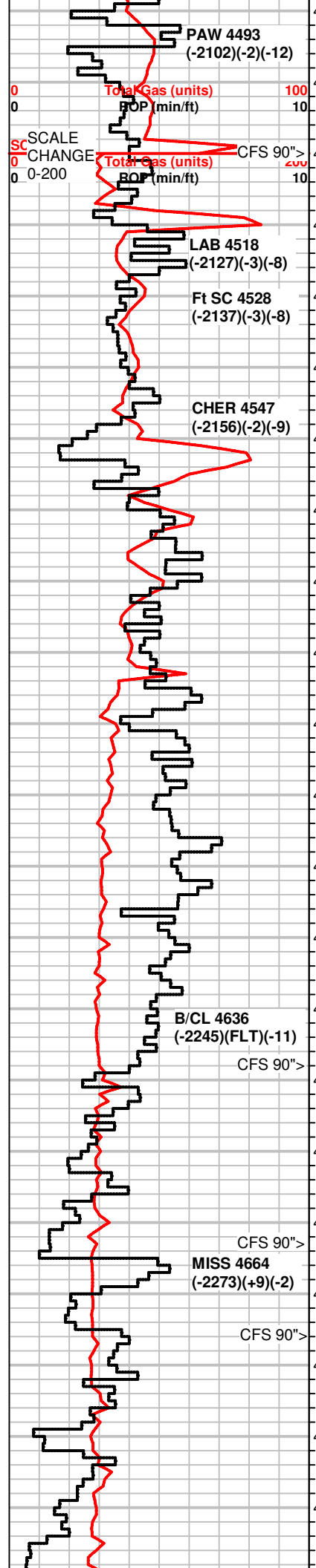
recycle

+35 UGK, shale gas

recycle

2 UGK, shale gas





SH, grays, green, rare blk  
MS, crm to tan, f-xln, dense, fossilif., NS, Chert, white, tan, fossils

MS, crm to tan, f-xln to chalky, dense to soft pcs, gritty/sucrosic looking, micro oolitic pcs rare, dull fluor, NS

MS, crm to tan, f-xln to chalky, firm, rare f-gr oolitic pcs, dead wormy strn(1pc), no cut, no odor, dull fluor, Chert, wht

MS-WS, crm to brn, f-xln, dense to frim, some glauc, NS

SH, blk to gray, some sandy/silty, pyrite

SH, grays to green

MS, brn to crm, f-xln to mic-xln, dense, fossils, Chert, wht, tan

MS, brn to tan, f to mic-xln, dense, sub oolitic pcs, scatt chalky, dull fluor, NS, Chert, brn, to wht, fossils

MS, crm to tan, f-xln, hard, inc in chalky pcs, scatt fossils, NS

SH, blk to grays, carb, gassy pcs rare

MS, crm to tan, f-xln to mic-xln, dense to hard, scatt fossils, NS

MS, gray to brn, crm, some chalky, most f-xln, dense, shaly in pt., rare mottled pcs, calcite, SH, gray to blk

MS, crm to brn, some gray, f-xln, dense, blocky pcs, scatt fossils, calcite, Chert, wht, mineral fluor, NS

MS-WS, crm to gray, brn, f- to mic-xln, hard, oolitic pcs, mottled pcs, some chalky, Chert, wht, NS  
scatt SH, blk to gray

WS-MS, brn to tan, m-xln, mottled, fossils, dense, dull fluor, NS

MS-WS, A.A., chalky to shaly pcs scatt, Chert, brn, fossils  
SH, blk to gray, silty pcs

MS-WS, crm to brn, chalky to f-xln, dense to firm pcs, fossils, mineral fluor, NS

MS, crm to off wht, chalky to f-xln, soft to dense, pcs, fossilif, Chert, wht, dull fluor, NS

MS, off wht to crm, f-xl nto chalky, firm to hard pcs, faint odor in bag, partial stn, bright fluor scatt, strmg cut when broken, rare live oil droplets

SH, varicolored, silty to sandy in pt., striated

MS, crm to tan, f-xln to chalky, fossilif. to oolitic, pyrite

SH, varicolored, sandy to silty, Chert, varicolored, fossils rare SS clusters, poorly to well sorted, sub angular, glauc specs, rare loose co-gr Qtz grs, NS

influx Chert, varicolored, mostly wht in 60" spl., some wthrd, oolitic, MS, crm to tan, f-xln, oolitic, dull fluor, NS, 75" spl-influx SS clusters, f-gr, glauc specs, dead stn, no cut, no odor

MS-WS, off wht to crm, brn, mic-xln to f-xln, partly chalky pcs, sub oolitic, NS

Dolo, brn to tan, vf-xln to vf-sucrosic txt, hard, dense, some pcs suboolitic/fossilif., dull fluor, NS

WS-PS, off wht to crm, f-xln to chalky, m-gr oolitic, firm to hard, dull fluor, NS

Dolo, crm to lt. gray, vf-xln to fn-sucrosic, dense to firm, dull fluor, NS

WS-PS, off wht to crm, f-lxn to m-xln, chalky pcs scatt, m-gr oolitic, NS

Dolo, brn to crm, tan, f-xln to m-xln, partially sucrosic txt, hard, dense pcs, oolitic to fossilif., dull fluor, NS

**+8 UGK, shale gas**

**Short trip 30 stands**

**+100 UGK, shale gas**

**work on rotary chain(1 hr)**

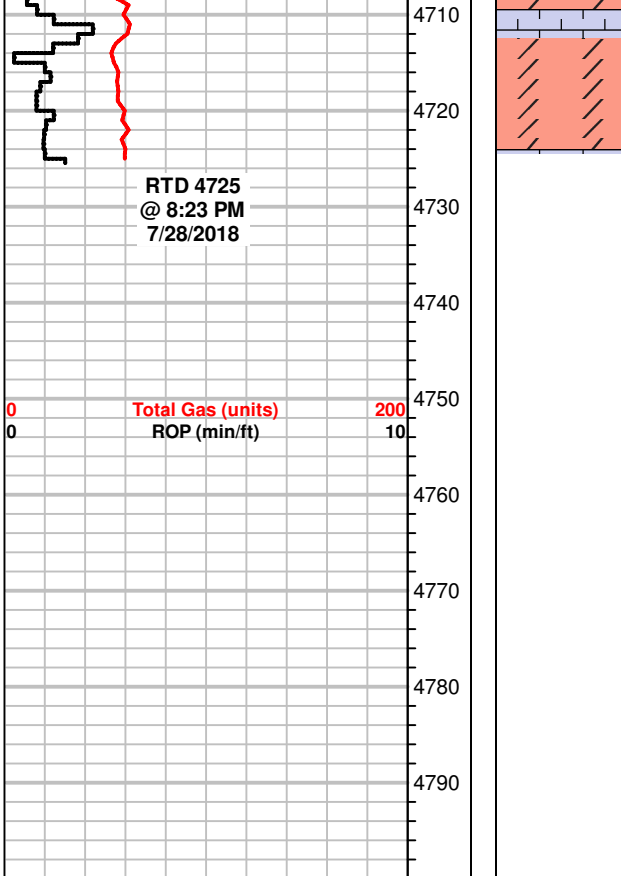
**Mud Properties**  
Vis 59  
Wt 9.2  
LCM 1#  
Filt 8.8  
CI 5,800  
pH 10.5

**+120 UGK, shale gas**

**DST #1 4574-4663**  
30-60-10-60  
WB, .25 inch, died in 10 min  
NBB  
NB, Flushed tool, NB  
NBB  
Rec: 5' Mud  
IH 2269#  
IF 19-21#  
ISIP 347#  
FF 21-24#  
FSIP 328#  
FH 2200#  
Temp 117°F  
Pipe Strap 4.92' Short

**Mud Properties**  
Vis 48  
Wt 9.2  
LCM 2#  
Filt 7.8  
CI 3,600  
pH 10.5





WS-PS, off wht to crm, chalky, f-xln, hard, oolitic

Dolo tan to brn, m-xln, oolitic/fossilif, dark specs, dense hard, vuggy por., dull fluor, NS