



1700 S. Country Estates Road
 Liberal, KS 67901
 PH (620)-624-2277 FAX (620) 624-2280

SERVICE ORDER - 1718 19698 L

Date: 10/1/2019

Well Name: Penny # 1-31 AFE # 64496	Location: 31-27S-40W
County - State: Stanton, Kansas	RRC #:
Type Of Service: Z-42 Cement Surface Casing	Customer's Order #:
Customer: Merit Energy	

Address: ulysses.invoices@meritenergy.com
 446 South Road M, Ulysses Ks. 67880

As a consideration, the above named Customer agrees to pay Basic Energy Services in accord with the rates and terms stated in Basic Energy Services current price lists. Invoices are payable NET 30 (SEE 10.2) after date of invoice. Upon Customer's default in payment of Customers account by such date, Customer agrees to pay interest thereon after default at 18% per annum. In the event it becomes necessary to employ an attorney to enforce collection of said account, Customer agrees to pay all the collection costs and attorney fees. These terms and conditions shall be governed by the laws of the state where services are performed or equipment or materials are furnished.

Basic Energy Services, warrants only title to the products, supplies and materials and that the same are free from defects in workmanship. THERE ARE NO WARRANTIES, EXPRESS OR IMPLIED, MERCHANTABILITY, FITNESS FOR A PARTICULAR PURPOSE OR OTHERWISE WHICH EXTEND BEYOND THOSE STATED IN THE IMMEDIATELY PRECEDING SENTENCE. Basic Energy Services, liability and Customer's exclusive remedy in any cause of action (whether in contract, tort, product liability, breach of warranty or otherwise) arising out of the sale or use of any products, supplies, or materials upon their return to Basic Energy Services, is expressly limited to the replacement of such products, supplies or materials or, at Basic Energy Services, option, to the allowance to the Customer of credit for the cost of such items. In no event shall Basic Energy Services be liable for special, indirect, punitive or consequential damages.

CODE	QTY	UOM	DESCRIPTION	PRICE	TOTAL
BC118	410	EA	A-Con Blend	50.00	20500.00
BC101	165	SK	Class C Cement	29.00	4785.00
CC102	247	LB	Celloflake	4.00	988.00
CC109	1470	LB	Calcium Chloride	1.00	1470.00
CC201	411	LB	Gilsonite	1.00	411.00
CF105	1	Ea	Top Rubber Cement Plug, 8 5/8"	225.00	225.00
ME102	180	MI	Heavy Equipment Mileage	8.00	1440.00
CE240	575	SK	Blending & Mixing Service Charge	1.40	805.00
TM	1626	MI	Ton Mileage	3.00	4878.00
CC2	1	HR	Depth Charge, 1001'-2000'	1500.00	1500.00
CE504	1	EA	Plug Container Utilization Charge	250.00	250.00
ME101	60	MI	Light Vehicle Mileage	5.00	300.00
CE505	1	EA	Cement Densimeter, with chart recorder	350.00	350.00
BE143	1	EA	Supervisor	75.00	75.00
BE144	4	EA	Driver	35.00	140.00
				Book Total:	\$38,117.00
				Taxes:	
				Disc. Price:	\$13,091.43
Additional 10% Discount as per Agreement on Cement Services				10% Disc	\$1,309.14
				Adjusted Price	\$11,782.29

PUMP TRUCK NUMBER: 38750 19842

DRIVER: *Angel Echevarria*
Victor A. Corne

BASIC ENERGY SERVICES

THIS JOB WAS SATISFACTORILY COMPLETED YES NO

OPERATION OF EQUIPMENT WAS SATISFACTORY YES NO

PERFORMANCE OF PERSONEL WAS SATISFACTORY YES NO

CUSTOMER OR HIS AGENT

Customer Comments or Concerns:
Corey Stackler
Oscar Chavez / Jose Martinez



Liberal Yard #1717 - Phone 620-624-2277 - 1700 S. Country Estates Road, Liberal KS 67901

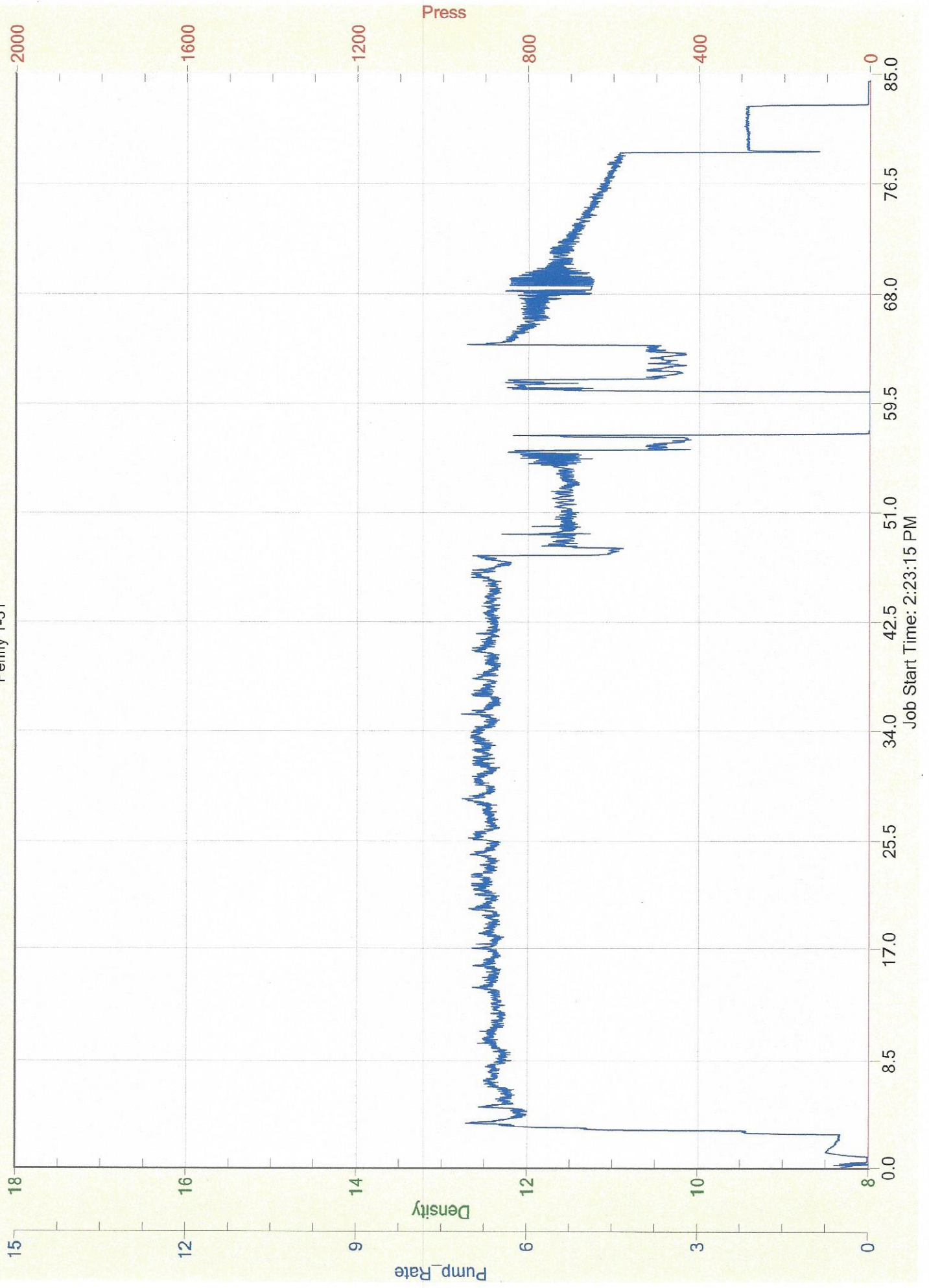
PRESSURE PUMPING

Job Log

Customer:	Merit Energy		Cement Pump No.:	38750 19842 12HRS		Operator TRK No.:	78868		
Address:	ulysses.invoices@meritenergy.com		Ticket #:	1718 19698 L		Bulk TRK No.:	37712 19883 Corey	27808 19578 Oscar	
City, State, Zip:	446 South Road M, Ulysses Ks. 6788		Job Type:	Z-42 Cement Surface Casing					
Service District:	1718-Liberal KS		Well Type:	OIL					
Well Name and No.:	Penny # 1-31 AFE # 64496		Well Location:	31-27S-40W	County:	Stanton	State:	Kansas	
Type of Cmt	Sacks	Additives			Truck Loaded On				
A-Con Cement	410	3% Calcium Chloride, 1/2# Celloflake, 1# Gilsonite			37712 19883 Corey		Front	Back	
Class C Cement	165	2% Calcium Chloride, 1/4# Celloflake			27808 19578 Oscar		Front	Back	
							Front	Back	
Lead/Tail:	Weight #1 Gal.	Cu/Ft/sk	Water Requirements		CJ. FT.	Man Hours / Personnel			
Lead:	12.1	2.41	13.9		988.1	TT Man Hours:	54		
Tail:	14.8	1.34	6.33		221.1	# of Men on Job:	4		
Time (am/pm)	(BPM)	Volume (BBLs)	Pumps		Pressure(PSI)		Description of Operation and Materials		
			T	C	Tubing	Casing			
12:00pm							Arrived at location		
13:00pm							Spot trucks/Rig up		
14:00pm							Safety meeting		
14:28pm						1500	Pressure test lines to 1500psi		
14:30pm	3	10				50	Pump 10bbls of fresh water Spacer		
14:33pm	6	175				150	Pump 175bbls of lead from 410sks at 12.1lbs		
15:14pm	6	39				200	Pump 39bbls of tail from 165sks at 14.8lbs		
15:26pm							Shut down/Drop plug/Wash pump and lines		
15:29pm							Start displacement of 93bbls with fresh water		
15:34pm	6	20				230	20bbls gone		
15:38pm	5	40				310	40bbls gone		
15:42pm	5	60				400	60bbls gone		
15:47pm	4.5	80				500	80bbls gone/Slow down rate		
15:51pm	2	83				980	Bump plug/Hold for minutes		
15:53pm							Release pressure to check if float holds		
							Got 80bbls of cement to surface		
							Rig down		
							Job Completed		
							Thanked company man and rig crew		
Size Hole	12 1/4	Depth	1527				TYPE	Float Collar	
Size & Wt. Csg.	8 5/8 24#	Depth	1517	New / Used			Packer	1475.38	Depth
Landing Psi	500+	Depth					Retainer		Depth
Shoe Joint	41.62	Type					Perfs		CIBP
Customer Signature:						Basic Representative:		Victor A. Corona	
						Basic Signature:		<i>Victor A. Corona</i>	
						Date of Service:		10/1/2019	

Merit Energy

Penny 1-31



Job Start Time: 2:23:15 PM

Pumping Order / Mixture

Client: Merit Energy
Date: 10/1/2019
Job: 8 5/8 Surface

Well Name & No: Penny 1-31
Location Supervisor: Victor A. Corona
COMPANY REP. Rodney Gonzales

Differential Pressure 1595 psi
Lift Pressure: 500 psi

Recipe

Pressure Test PSI: 1500

MAX PSI: 500

10 BBLs OF FRESH WATER SPACER
175 BBLs LEAD SLURRY YIELD 2.41 12.1LBS 410SKS 13.9G/SK
39 BBLs TAIL SLURRY YIELD 1.34 14.8LBS 165SKS 6.33G/SK

DROP PLUG/WASH PUMP ON TOP OF PLUG

93.0 BBLs OF DISPLACEMENT
80.0 BBLs @ 5 BPM
13.0 BBLs AT 2-3 BPM TO BUMP PLUG

DISP PLUG WITH 93 BBLs OF H2O

