

# JERRY GREEN

CONSULTING GEOLOGIST  
 4350 Keystone Rd  
 HAYS, KS 67601  
 PHONE: 785-625-5155

## GEOLOGIST'S REPORT DRILLING TIME AND SAMPLE LOG

COMPANY: JO-ALLEN CO., INC.  
 LEASE: KRAEMER #2

FIELD: \_\_\_\_\_  
 ELEVATIONS: KB 2006

LOCATION: 1345 FSL 2210 FE  
 DF: \_\_\_\_\_

SEC: 27 TWP: 8S RGE: 18W  
 COUNTY: ROOKS STATE: KS  
 MEASUREMENTS ARE ALL FROM \_\_\_\_\_

CONTRACTOR: WHITE KNIGHT DRILLING  
 SURFACE @ 233

SPUD: 10-22-19 COMP: 10-27-19  
 RTD: 3530 LTD: 3525  
 MUD UP: 2900' TYPE MUD: CHEM.

SAMPLES SAVED FROM: 2900' TO TD.  
 DRILLING TIME KEPT FROM: 2900' TO TD.  
 SAMPLES EXAMINED FROM: 2900' TO TD.  
 GEOLOGICAL SUPERVISION FROM: 2900' TO TD.

FORMATION TOPS LOG SAMPLES

ANHY. 1374-1418 632

HEEBNER 3136-1130 3134-1128

TORONTO 3160-1154 3159-1153

LKC. 3178-1172 3176-1170

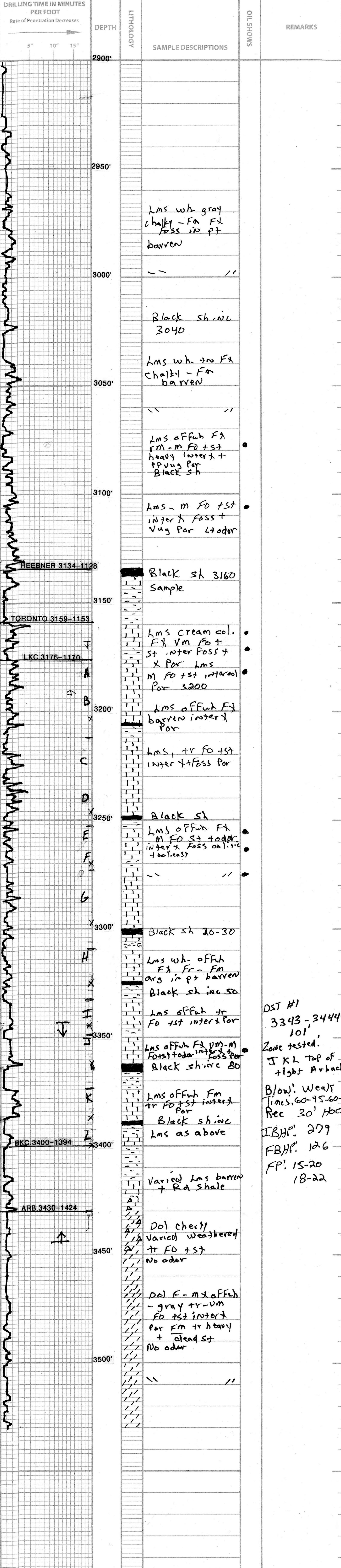
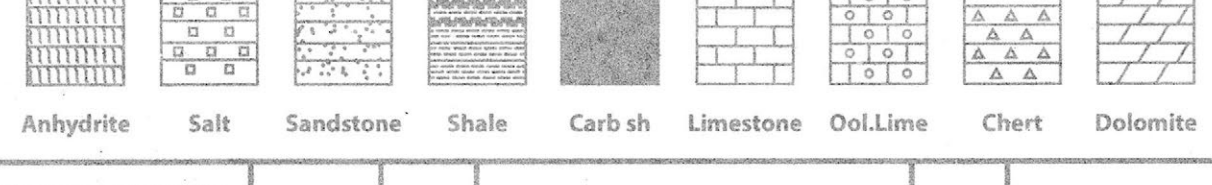
BKC. 3402-1396 3400-1394

ARBUCKLE 3434-1428 3430-1424

FORMATION TOPS	LOG	SAMPLES
ANHY.	1374-1418 632	
HEEBNER	3136-1130 3134-1128	
TORONTO	3160-1154 3159-1153	
LKC.	3178-1172 3176-1170	
BKC.	3402-1396 3400-1394	
ARBUCKLE	3434-1428 3430-1424	

REMARKS: All parties involved recommended that this well be plugged.  
 Respectfully submitted

### LEGEND



DST #1  
 3343-3444  
 101'  
 Zone tested.  
 JKL top of tight Arbuckle  
 Blow! Went Times, 60-45-60-45  
 Rec 30' Hbcm  
 IBHP: 279  
 FBHP: 126  
 FP: 15-20  
 18-22