



1700 S. Country Estates Raod
 Liberal, KS 67901
 PH (620)-624-2277FAX (620) 624-2280

SERVICE ORDER - 1718 19549 L

Date: 8/12/2019

Well Name: Flora Meredith # 2-10	Location: 10-30S-33W
County - State: Haskell	RRC #:
Type Of Service: Z-42 Cement Production Casing	Customer's Order #: 0

Customer: Merit Energy

Address: sublette.invoices@meritenergy.com
 AFE# 63309

As a consideration, the above named Customer agrees to pay Basic Energy Services In accord with the rates and terms stated in Basic Energy Services current price lists. Invoices are payable NET 30 (SEE 10.2) after date of invoice. Upon Customer's default in payment of Customers account by such date, Customer agrees to pay interest thereon after default at 18% per annum. In the event it becomes necessary to employ an attorney to enforce collection of said account, Customer agrees to pay all the collection costs and attorney fees. These terms and conditions shall be governed by the laws of the state where services are performed or equipment or materials are furnished.

Basic Energy Services, warrants only title to the products, supplies and materials and that the same are free from defects in workmanship. THERE ARE NO WARRANTIES, EXPRESS OR IMPLIED, MERCHANTABILITY, FITNESS FOR A PARTICULAR PURPOSE OR OTHERWISE WHICH EXTEND BEYOND THOSE STATED IN THE IMMEDIATELY PRECEDING SENTENCE. Basic Energy Services, liability and Customer's exclusive remedy in any cause of action (whether in contract, tort, product liability, breach of warranty or otherwise) arising out of the sale or use of any products, supplies, or materials upon their return to Basic Energy Services, is expressly limited to the replacement of such products, supplies or materials or, at Basic Energy Services, option, to the allowance to the Customer of credit for the cost of such items. In no event shall Basic Energy Services be liable for special, indirect, punitive or consequential damages.

CODE	QTY	UOM	DESCRIPTION	PRICE	TOTAL
BC133	320	SK	Class C 50/50 Poz	23.50	7520.00
CC113	1614	LB	Gypsum	1.00	1614.00
CC111	1916	LB	Salt	0.50	958.00
CC102	81	LB	Celloflake	4.00	324.00
CC201	1601	LB	Gilsonite	1.00	1601.00
CC105	68	LB	C-41P	4.00	272.00
CC187	135	LB	C-17	24.00	3240.00
CF851	1	Ea	5 1/2" Float Shoe(Blue)	425.00	425.00
CF951	1	Ea	5 1/2" Float Collar(Blue)	420.00	420.00
CF1751	20	Ea	Centralizer, 5 1/2" (Blue)	80.00	1600.00
CF103	1	Ea	Top Rubber Cement Plug, 5 1/2"	105.00	105.00
CC151	500	GAL	Mud Flush	1.50	750.00
C718	26	Gal	Clayplex 650	35.00	910.00
ME102	120	MI	Heavy Equipment Mileage	8.00	960.00
CE240	320	SK	Blending & Mixing Service Charge	1.40	448.00
TM	807	MI	Ton Mileage	3.00	2421.00
CC6	1	HR	Depth Charge, 5001-6000'	2900.00	2900.00
CE504	1	EA	Plug Container Utilization Charge	250.00	250.00
ME101	60	MI	Light Vehicle Mileage	5.00	300.00
CE505	1	EA	Cement Densimeter, with chart recorder	350.00	350.00
BE143	1	Ea	Supervisor	75.00	75.00
		Ea	Driver	35.00	
				Book Total:	\$27,443.00
				Taxes:	
				Disc. Price:	\$13,268.70
Additional 10% Discount as per Agreement on Cement Services				10% Disc	\$1,326.87
				Adjusted Price	\$11,941.83

PUMP TRUCK NUMBER: 37223 19572

DRIVER: *James Torres*
Victor A Corne
 BASIC ENERGY SERVICES

THIS JOB WAS SATISFACTORILY COMPLETED YES NO
 OPERATION OF EQUIPMENT WAS SATISFACTORY YES NO
 PERFORMANCE OF PERSONEL WAS SATISFACTORY YES NO

CUSTOMER OR HIS AGENT

Customer Comments or Concerns:

Corey Blackshaw
Joe Martinez



Liberal Yard #1717 - Phone 620-624-2277 - 1700 S. Country Estates Road, Liberal KS 67901

PRESSURE PUMPING

Job Log

Customer:	Merit Energy	Cement Pump No.:	37223 19572 11HRS	Operator TRK No.:	78868	
Address:	sublette.invoices@meritenergy.com	Ticket #:	1718 19549 L	Bulk TRK No.:	14354 19808 Corey	14354 19808
City, State, Zip:	AFE- 64184	Job Type:	Z-42 Cement Production Casing			
Service District:	1718 - Liberal, Ks.	Well Type:	OIL			
Well Name and No.:	Flora Meredith # 2-10	Well Location:	10-30S-33W	County:	Haskell	State: Kansas

Type of Cmt	Sacks	Additives	Truck Loaded On		
Class C 50/50	320	6% Gypsum, 10% Salt, .5% C-17, 5# Gilsonite, 1/4# Celloflake, 1/4# Defoamer	14354 19808 Corey	Front	Back
			14354 19808	Front	Back
				Front	Back

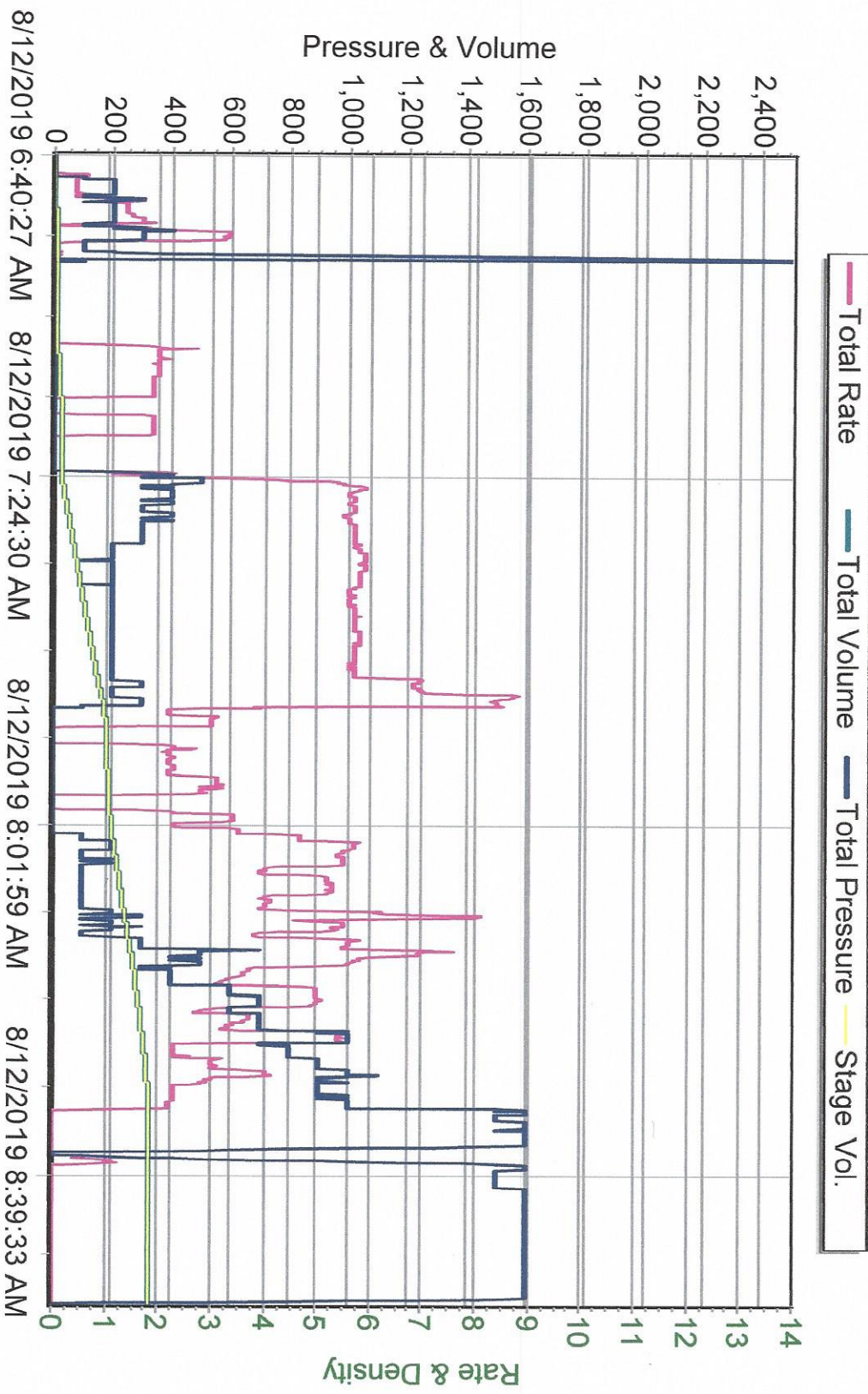
Tail 1/Tail 2:	Weight #1 Gal.	Cu/Ft/sk	Water Requirements	CU. FT.	Man Hours / Personnel	
Tail Stage 1:	13.6	1.57	7.18	502.4	TT Man Hours:	37
Tail Stage 2:					# of Men on Job:	3

Time (am/pm)	(BPM)	Volume (BBLs)	Pumps		Pressure(Psi)		Description of Operation and Materials
			T	C	Tubing	Casing	
2:30am							Arrived at location
3:00am							Spot trucks/Rig up
6:30am							Safety meeting
6:52am	3	12				80	Pump 12bbls of mud flush spacer (500Gal)
6:59am						2500	Pressure Test lines to 2500psi
7:09am	3	14				zero	Pump 14bbls of cement from 50sks at 13.6lbs to fill Rat and Mouse Hole
7:23am	6	75				300	Pump 75bbls of cement from 270sks at 13.6lbs
7:50am							Shut down/Drop Plug/Wash pump and lines to pit
7:59am							Start displacement of 131bbls with H2O/4%KCL
8:05am	5	20				90	20bbls gone
8:09am	6	40				110	40bbls gone
8:13am	5	60				300	60bbls gone
8:17am	5	80				400	80bbls gone
8:22am	4	100				650	100bbls gone
8:25am	5	110				1000	110bbls gone/Slow down rate
8:30am	3	131				1500	Bump plug/Hold for 5 minutes
8:35am							Release pressure to check if float holds
8:37am						1500	Pressure test casing for 15minutes
							Rig down
							Job Completed
							Thanked company man and rig crew

Size Hole	7 7/8"	Depth	5717		TYPE	Float Collar	
Size & Wt. Csg.	5 1/2" 17#	Depth	5718	New / Used	Float Collar	5675.06	Depth
Landing Press 1	1000+	Landing Press 2			Retainer		Depth
Shoe Jt.	42.94	Type			Perfs		CIBP

Customer Signature:	Basic Representative:	Victor A. Corona
	Basic Signature:	<i>Victor A. Corona</i>
	Date of Service:	8/12/2019

Merit Energy
Flora Meredith 2-10
5 1/2 Production
8/12/2019



Pumping Order / Mixture

Client: Merit Energy
Date: 8/12/2019
Job: 5 1/2 Production

Well Name & No: Flora Meredith 2-10
Location Supervisor: Victor A. Corona
COMPANY REP. Rodney Gonzales

Differential Pressure 791 psi
Lift Pressure: 500 psi

Recipe

Pressure Test PSI: 2500

MAX PSI: 1500

12 BBLs OF MUD FLUSH SPACER

14 BBLs CEMENT R&M YIELD 1.57 13.6 LBS 50SKS 7.18G/SK

75 BBLs TAIL SLURRY YIELD 1.57 13.6 LBS 270SKS 7.18G/SK

DROP PLUG/WASH PUMP ON TO PIT

131.0 BBLs OF DISPLACEMENT

120.0 BBLs @ 5 BPM

11.0 BBLs AT 2-3 BPM TO BUMP PLUG

DISP PLUG WITH 131 BBLs OF H2O/4%KCL



Cement Callsheet

Company		Merit Energy		Service Point		Liberal, Kansas	
Well Type		Contractor		Contact Person		Tyece Davis	
Lease		Flora Meredith		Duke 9		County	
Directions:		Well #		Sec		Twp	
		2-10		10		30S	
		Range		State		Ph #	
		33W		Kansas		620-388-3779	

Sublette: Jct 83 & 56; West on 56 to CR II; South to CR 210; 1.5 miles east; North to rig

Job Type	Production	Casing Size	Thread	Weight
Equipment	1 Pump Truck I Bulk Truck	5 1/2	8 Rnd	17
AFE #:	64184	Plug Container	Yes	
		7 7/8		
		Bridge Plug		

CEMENT DATA

LEAD 1	Weight PPG	Type	Addresses
LEAD 1	13.60	Class C 50/50	6% Gypsum, 10% Salt, .5% C-17, 1/4# Defoamer, 5# Gilsontite, 1/4# Celloflake
TAIL 1	Weight PPG	Type	Addresses
TAIL 2	Weight PPG	Type	Addresses
LEAD 2	Weight PPG	Type	Addresses
LEAD 2	30%	Yield PPG	1.57
		Water Galisk	7.18

Sacks	Weight PPG	Type	Addresses
LEAD 1	Weight PPG	Type	Addresses
TAIL 1	Weight PPG	Type	Addresses
TAIL 2	Weight PPG	Type	Addresses
LEAD 2	Weight PPG	Type	Addresses
LEAD 2	Weight PPG	Type	Addresses
LEAD 2	Weight PPG	Type	Addresses

Float Equipment

Part #	Quantity	Description	# Used	# Returned
CF851	1	5 1/2" Float Shoe (Blue)		
CF951	1	5 1/2" Float Collar (Blue)		
CF1751	20	Centralizer, 5 1/2" (Blue)		
CF103	1	Top Rubber Cement Plug, 5 1/2"		

Misc. Chemicals

CC151	500	Mud Flush
C718	26	Clayplex 650

Operator or Driver	Called
Ordered By	Phone 972-628-1680 Fax
Call Taken By	Max Ball
Time Ready	Phone 620-675-5025 Email
Date of Job	Call Out Time

DATE

8-11-2019

COMPANY

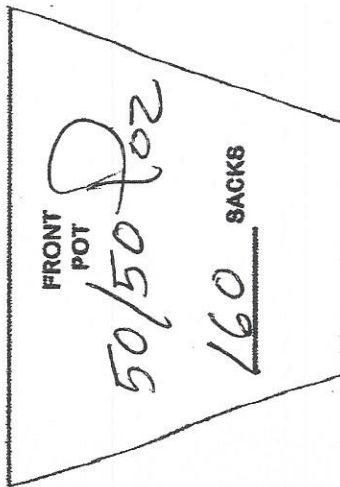
Merit

LEASE

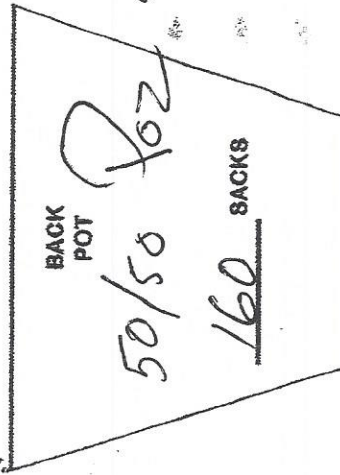
Flora Meredith

Well 2-10

DIRECTIONS



14354



80861

tours to Load Truck 400 Per 200 Pcs