



Liberal Yard #1717 - Phone 620-624-2277 - 1700 S. Country Estates Road, Liberal KS 67901

PRESSURE PUMPING Job Log

Customer:	Merit Energy	Cement Pump No.:	38117, 19919	Operator TRK No.:	86531 Angel	
Address:	sublette.invoices@meritenergy.com	Ticket #:	1718 19701 L	Bulk TRK No.:	19827 Oscar	14354 Kirby
City, State, Zip:	AFE- 61183	Job Type:	Z-42 Cement Surface Casing			
Service District:	1718 - Liberal, Ks	Well Type:	OIL			
Well Name and No.:	Emma Ward # 3	Well Location:	35-27S-34W	County:	Haskell	State: Kansas

Type of Cmt	Sacks	Additives	Truck Loaded On		
A-Con	515	3% CC, 1/2# Celloflake, 1# Gilsonite	19827 Oscar	Front	Back
Premium Plus	165	2% CC, 1/4# Celloflake	14354 Kirby	Front	Back
				Front	Back

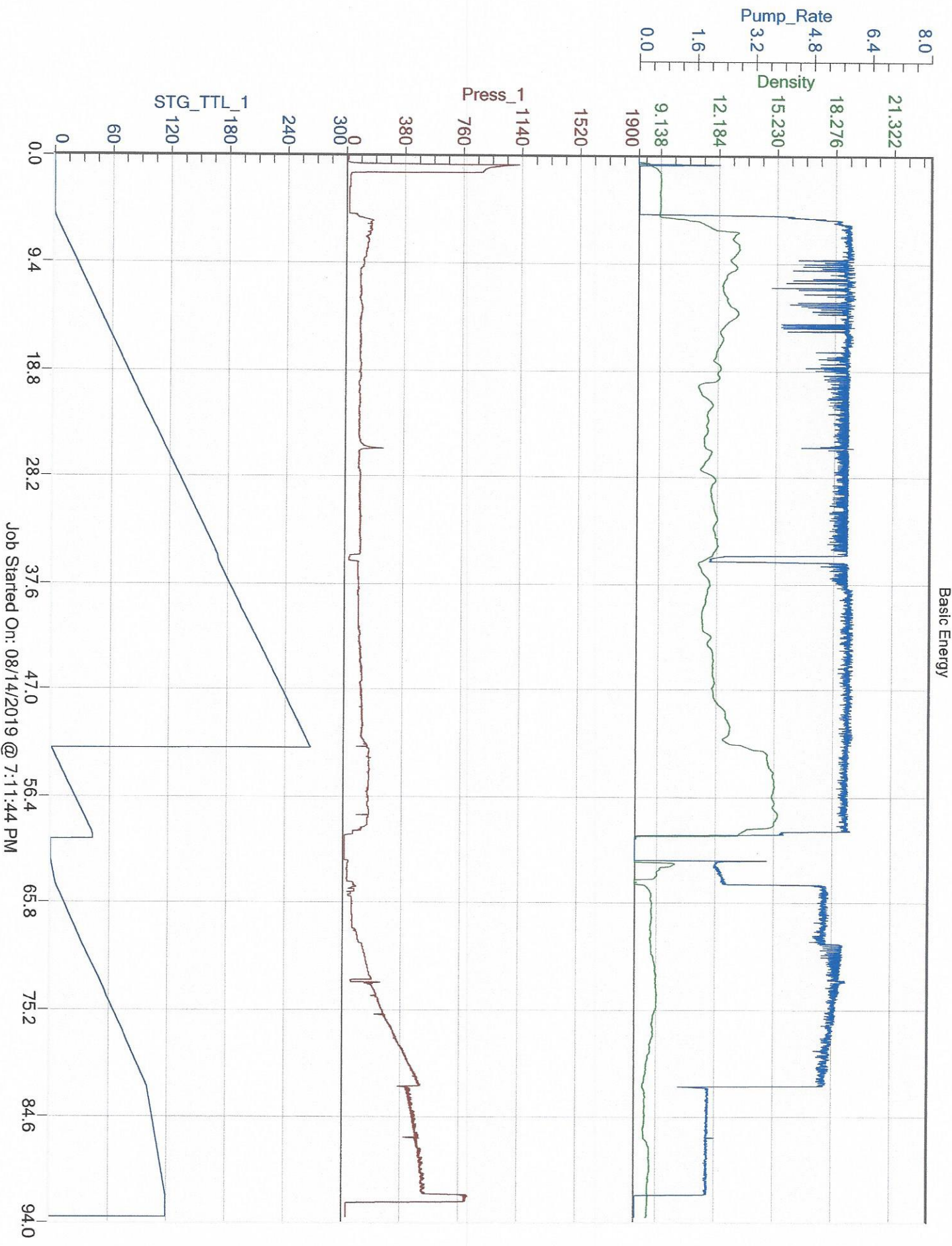
Lead/Tail:	Weight #1 Gal.	Cu/Ft/sk	Water Requirements	CU. FT.	Man Hours / Personnel	
Lead:	12.1	2.41	13.9	1241.15	Man Hours:	40
Tail:	14.8	1.34	6.33	221.1	# of Men on Job:	4

Time (am/pm)	(BPM)	Volume (BBLS)	Pumps		Pressure(Psi)		Description of Operation and Materials	
			T	C	Tubing	Casing		
15:30							On Location	
16:00							Safety Meeting	
4:30 PM							Rig Up	
6:13 PM							Pressure Test To 1500Psi	
6:15 PM	5.5	221.4				170	Pump Lead @ 12.1#	
19:03	5.5	39.3				170	Switch to Tail @ 14.8#	
19:14							Shut Down --- Drop Plug	
7:17 PM	5.5	10th50				130	Displacement	
	5.5	60				300		
	5.5	80				450		
	2	90				450		
20:15	2	109.1				600	Landed @ 800psi	
20:20							Release Back ---- float held	
							Job Completed	
							Thank You	
							100BBL Cement To Pit *****	
Size Hole	12.25"	Depth					TYPE	
Csg.	8 5/8	Depth	1774	New / Used			Packer	Depth
or tbg.		Depth					Retainer	Depth
Top Plugs		Type					Perfs	CIBP

Customer Signature:	Basic Representative:	Angel Echevarria
	Basic Signature:	
	Date of Service:	8/14/2019

EMMA WARD #3

Basic Energy



Job Started On: 08/14/2019 @ 7:11:44 PM