



Liberal Yard #1717 - Phone 620-624-2277 - 1700 S. Country Estates Road, Liberal KS 67901

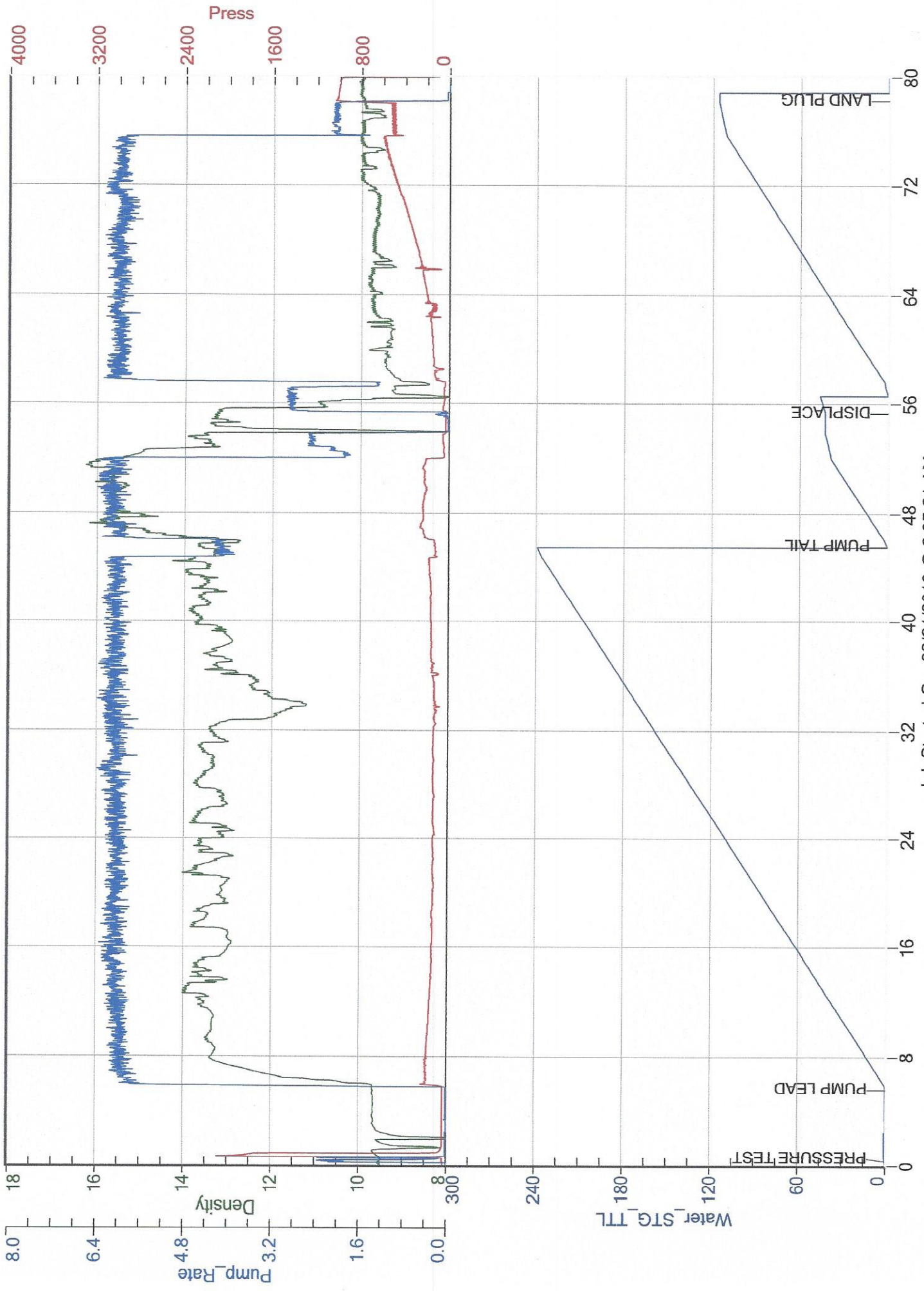
**PRESSURE PUMPING**

**Job Log**

<b>Customer:</b>	Merit Energy		<b>Cement Pump No.:</b>	38117, 19919 Hrs.		<b>Operator TRK No.:</b>	96816		
<b>Address:</b>	gardencity.invoices@meritenergy.com		<b>Ticket #:</b>	1718 19651 L		<b>Bulk TRK No.:</b>	19827, 37725 Kirby	30464, 37547 Oscar	
<b>City, State, Zip:</b>	AFE <del>61103</del> 64239		<b>Job Type:</b>	Z-42 Cement Surface Casing					
<b>Service District:</b>	1718 Liberal, Ks.		<b>Well Type:</b>	OIL					
<b>Well Name and No.:</b>	Kells I #4		<b>Well Location:</b>	32-27S-33W	<b>County:</b>	Haskell	<b>State:</b>	Kansas	
<b>Type of Cmt</b>	<b>Sacks</b>	<b>Additives</b>			<b>Truck Loaded On</b>				
A-Con' Blend	505	3% Calcium Chloride, 1/2# Polyflake, 1# Gilsonite			19827, 37725 Kirby		<b>Front</b>	<b>Back</b>	
Class C	165	2% Calcium Chloride, 1/4# Polyflake			30464, 37547 Oscar		<b>Front</b>	<b>Back</b>	
							Front	Back	
<b>Lead/Tail:</b>	Weight #1 Gal.	Cu/Ft/sk	Water Requirements		CU. FT.	Man Hours / Personnel			
<b>Lead:</b>	12.1	2.41	13.9		1217.05	TT Man Hours:	46.5		
<b>Tail:</b>	14.8	1.34	6.33		221.1	# of Men on Job:	4		
Time (am/pm)	(BPM)	Volume (BBLs)	Pumps		Pressure(PSI)		Description of Operation and Materials		
			T	C	Tubing	Casing			
22:30							ON LOCATION & SAFETY MEETING		
2:30							RIG UP		
3:15 AM							RIG TO CIRCULATE		
3:24 AM							RIG TO PT		
3:26 AM							PRESSURE TEST TO 2000PSI		
3:31	6	216.7 slurry				190	PUMP LEAD 515 SX @ 12.1#		
4:11	6	39.3 slurry				220	PUMP TAIL 165SX @ 14.8#		
4:19 AM							SHUTDOWN / DROP PLUG		
4:21	6	10				140	DISPLACE		
4:28	6	20				150	CEMENT RETURNS		
	6.1	30				180			
	6	40				220			
	5.9	50				260			
	6	60				320			
	6	70				390			
	6	80				470			
	6.1	90				540			
	6	100				590			
4:41	6	101				600	SLOW RATE TO 2.0BPM @ 520PSI		
	2	110				530			
4:44	2	111.1				530	LAND PLUG / PRESSURE UP TO 1030PSI		
4:46							RELEASE BACK --- FLOAT HELD		
							JOB COMPLETE		
Size Hole	12 1/4"	Depth					TYPE	Plug Container	
Size & Wt. Csg.	8 5/8" 24#	Depth	1790.64'	New / Used			Packer	Depth	
Landing Press.	406psi	Depth					Retainer	Depth	
Shoe Jt.	42.24'	Type					Perfs	CIBP	
<b>Customer Signature:</b>						<b>Basic Representative:</b>	Daniel Beck		
						<b>Basic Signature:</b>	<i>Daniel Beck</i>		
						<b>Date of Service:</b>	8/21/2019		

# Merit Energy

Kells I #4



Job Started On: 08/21/2019 @ 3:25:21 AM