



1700 S. Country Estates Road
 Liberal, KS 67901
 PH (620)-624-2277 FAX (620) 624-2280

SERVICE ORDER - 1718 19659 L

Date: 9/5/2019

Well Name: McWilliams E # 8	Location: 21-24S-33W
County - State: Finney, Kansas	RRC #:
Type Of Service: Z-42 Cement Surface Casing	Customer's Order #:

Customer: Merit Energy

Address: gardencity.invoices@meritenergy.com
 AFE- 64323

As a consideration, the above named Customer agrees to pay Basic Energy Services in accord with the rates and terms stated in Basic Energy Services current price lists. Invoices are payable NET 30 (SEE 10.2) after date of invoice. Upon Customer's default in payment of Customers account by such date, Customer agrees to pay interest thereon after default at 18% per annum. In the event it becomes necessary to employ an attorney to enforce collection of said account, Customer agrees to pay all the collection costs and attorney fees. These terms and conditions shall be governed by the laws of the state where services are performed or equipment or materials are furnished.

Basic Energy Services warrants only title to the products, supplies and materials and that the same are free from defects in workmanship. THERE ARE NO WARRANTIES, EXPRESS OR IMPLIED, MERCHANTABILITY, FITNESS FOR A PARTICULAR PURPOSE OR OTHERWISE WHICH EXTEND BEYOND THOSE STATED IN THE IMMEDIATELY PRECEDING SENTENCE. Basic Energy Services, liability and Customer's exclusive remedy in any cause of action (whether in contract, tort, product liability, breach of warranty or otherwise) arising out of the sale or use of any products, supplies, or materials upon their return to Basic Energy Services, is expressly limited to the replacement of such products, supplies or materials or, at Basic Energy Services' option, to the allowance to the Customer of credit for the cost of such items. In no event shall Basic Energy Services be liable for special, indirect, punitive or consequential damages.

CODE	QTY	UOM	DESCRIPTION	PRICE	TOTAL
BC118	500	EA	A-Con Blend	50.00	25000.00
BC101	165	SK	Class C Cement	29.00	4785.00
CC102	292	LB	Celloflake	4.00	1168.00
CC109	1722	LB	Calcium Chloride	1.00	1722.00
CC201	501	LB	Gilsonite	1.00	501.00
CF253	1	Ea	Guide Shoe - Regular, 8 5/8" (Blue)	380.00	380.00
CF1294	1	Ea	Accu-Seal Float Collar 8 5/8"	1050.00	1050.00
CF1753	6	Ea	Centralizer, 8 5/8" (Blue)	90.00	540.00
CF105	1	Ea	Top Rubber Cement Plug, 8 5/8"	225.00	225.00
ME102	180	MI	Heavy Equipment Mileage	8.00	1440.00
CE240	665	SK	Blending & Mixing Service Charge	1.40	931.00
TM	1878	MI	Ton Mileage	3.00	5634.00
CC2	1	HR	Depth Charge, 1001'-2000'	1500.00	1500.00
CE504	1	EA	Plug Container Utilization Charge	250.00	250.00
ME101	60	MI	Light Vehicle Mileage	5.00	300.00
CE505	1	EA	Cement Densimeter, with chart recorder	350.00	350.00
BE143	1	EA	Supervisor	75.00	75.00
BE144	2	EA	Driver	35.00	70.00
				Book Total:	\$45,921.00
				Taxes:	
				Disc. Price:	\$16,439.05
Additional 10% Discount as per Agreement on Cement Services				10% Disc	\$1,643.91
				Adjusted Price	\$14,795.15

PUMP TRUCK NUMBER: 38117, 19919

THIS JOB WAS SATISFACTORILY COMPLETED YES NO
 OPERATION OF EQUIPMENT WAS SATISFACTORY YES NO
 PERFORMANCE OF PERSONEL WAS SATISFACTORY YES NO

DRIVER: Jesse Paxton, Oscar Chavez, Cory Blackshun

Daniel Boesh
 BASIC ENERGY SERVICES

CUSTOMER OR HIS AGENT

Customer Comments or Concerns:

--



Liberal Yard #1717 - Phone 620-624-2277 - 1700 S. Country Estates Road, Liberal KS 67901

PRESSURE PUMPING Job Log

Customer:	Merit Energy	Cement Pump No.:	38117, 19919 6Hrs.	Operator TRK No.:	96816
Address:	gardencity.invoices@meritenergy.com	Ticket #:	1718 19659 L	Bulk TRK No.:	14355, 37724 Cory 37712, 19883 Oscar
City, State, Zip:	AFE- 64323	Job Type:	Z-42 Cement Surface Casing		
Service District:	1718 - Liberal, Ks.	Well Type:	OIL		
Well Name and No.:	McWilliams E # 8	Well Location:	21-24S-33W	County:	Finney State: Kansas

Type of Cmt	Sacks	Additives	Truck Loaded On		
A-Con' Blend	500	3% Calcium Chloride, 1/4# Polyflake, 1# Gilsomite	14355, 37724 Cory	Front	Back
Class C	165	2% Calcium Chloride, 1/4# Polyflake	37712, 19883 Oscar	Front	Back
				Front	Back

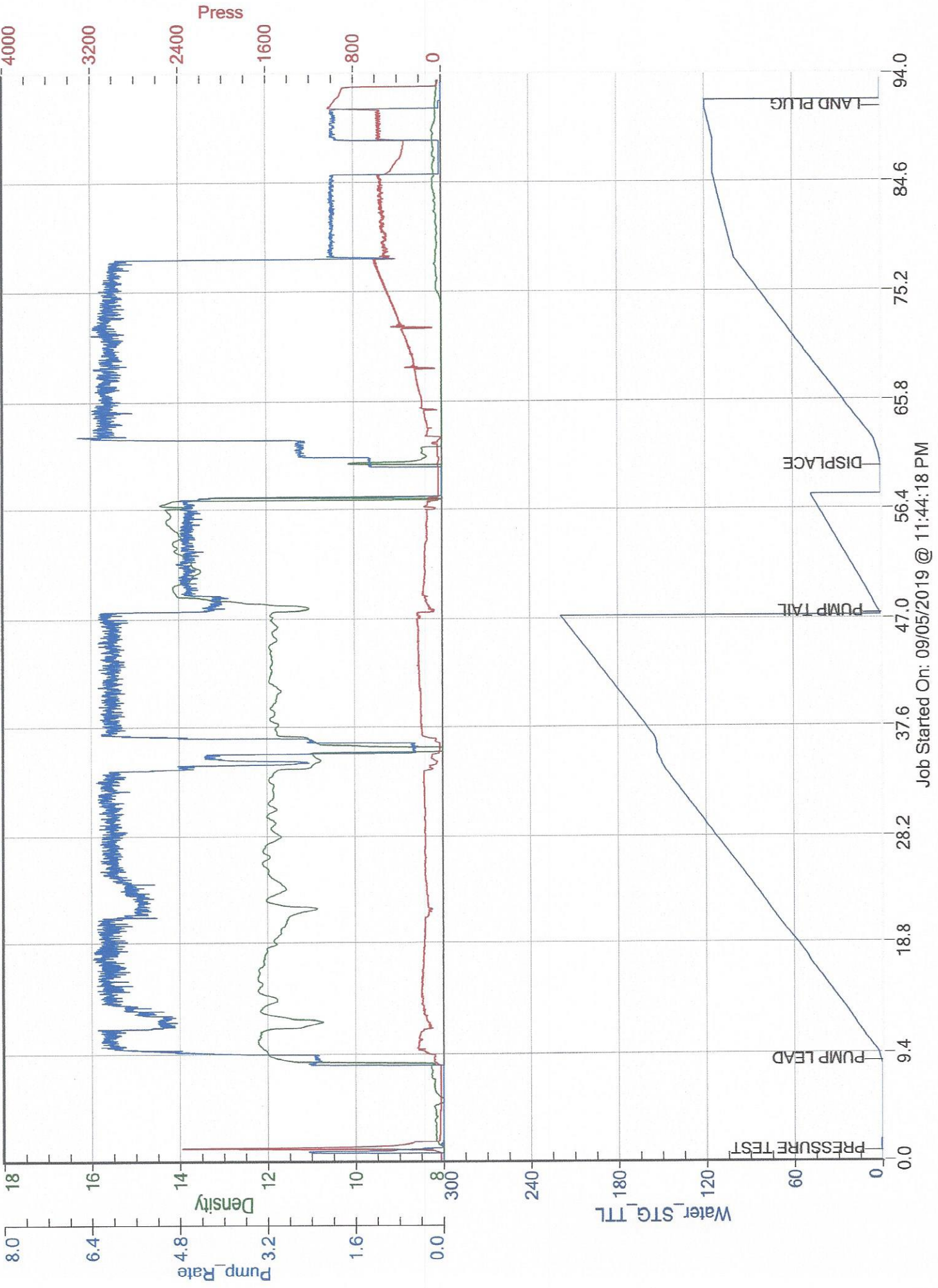
Lead/Tail:	Weight #1 Gal.	Cu/Ft/sk	Water Requirements	CU. FT.	Man Hours / Personnel	
Lead:	12.1	2.41	13.9	1205	TT Man Hours:	36.5
Tail:	14.8	1.34	6.33	221.1	# of Men on Job:	4

Time (am/pm)	(BPM)	Volume (BBLs)	Pumps		Pressure (PSI)		Description of Operation and Materials
			T	C	Tubing	Casing	
20:30							ON LOCATION
21:30							SAFETY MEETING
9:35 PM							RIG UP
11:40 PM							RIG TO CIRCULATE
11:41 PM							SAFETY MEETING
23:44							RIG TO PT
23:45							PRESSURE TEST TO 2300PSI
11:53 PM	6	214.6 slurry				230	PUMP 500SX LEAD @ 12.1#
0:34	4.6	39.3 slurry				180	PUMP 165SX TAIL @ 14.8#
0:42							SHUTDOWN / DROP PLUG
0:45	6.2	20				150	DISPLACE / CEMENT 20BBL IN
	6.2	30				180	
	6	40				220	
	6	50				250	
	6	60				310	
	6.2	70				390	
	5.9	80				470	
	6	90				550	
	5.8	99				610	SLOW RATE TO 2.0BPM @ 490PSI
	2	100				510	
	2	109.6				560	LAND PLUG / PRESSURE UP TO 1020PSI
							RELEASE BACK --- FLOAT HELD
							JOB COMPLETE

Size Hole	12 1/4"	Depth			TYPE	Plug Container	
Size & Wt. Csg.	8 5/8" 24#	Depth	1765.81'	New / Used	Packer	Depth	
Landing Press.	401.4psi	Depth			Retainer	Depth	
Shoe Jt.	41.65'	Type			Perfs	CIBP	

Customer Signature:	Basic Representative:	Daniel Beck
	Basic Signature:	<i>Daniel Beck</i>
	Date of Service:	9/5/2019

Merit Energy
McWilliamsE8



Job Started On: 09/05/2019 @ 11:44:18 PM