

LITHOLOGY STRIP LOG

WellSight Systems

Scale 1:240 (5"=100') Imperial
Measured Depth Log

Well Name: VINCENT OIL CORP. SANDYLAND 3-27

API: 15-057-21025-00-00

Location: NW NE SW SW SEC 27-T28S-23W, FORD CO.KS.

License Number: 5004

Region: Mulberry Creek

Spud Date: 07/29/19

Drilling Completed: 8/09/19

Surface Coordinates: 1,037' FSL, 862' FWL

Bottom Hole

Coordinates:

Ground Elevation (ft): 2,516'

K.B. Elevation (ft): 2,528'

Logged Interval (ft): 4,250' To: 5,320' Total Depth (ft): 5,320'

Formation: Mississippi

Type of Drilling Fluid: NATIVE MUD TO 3,793'. CHEMICAL GEL TO RTD

Printed by MUD.LOG from WellSight Systems 1-800-447-1534 www.WellSight.com

OPERATOR

Company: VINCENT OIL CORP.

Address: 200 W. DOUGLAS AVE #725
WICHITA, KANSAS 67202-3013
OFFICE; 316-262-3573

GEOLOGIST

Name: Jame R. Hall (Well Supervision)

Company: Black Gold Petroleum

Address: PO BOX 66
VALLEY CENTER, KANSAS 67147-0066
316-217-1223

Comments

Drilling contractor: Duke Drilling, Rig #1, Tool Pusher Mike Godfrey.

Surface Casing: 8 5/8" 23# set at 646' with 280sxs, cement, did circulate.

Daily Activity: @07:00 hrs.

7/29/19: Move on and rig up.

7/30/19: 648' waiting on cementers.

7/31/19: 1,400' drilling. Cmt 8 5/8" csg @646' with 280sx.

8/01/19: 2,633' drilling.

8/02/19: 3,305' drilling.

8/03/19: 3,949' drilling. @ 3,793' change over to chem. gel drilling mud system.

8/04/19: 4,581' drilling.

8/05/19: 4,991' ready to short trip prior to drilling Pawnee.

8/06/19: 5,037' DST 1 Pawnee 5,011' - 5,037' (26'), Pipe Strap 3.27' short to the board.

8/07/19: 5,189' DST #2 Lower Penn & Mrw 5,084' - 5,189' (105').

8/08/19: 5,236' DST #3 Miss. 5,199' - 5,236' (37'). Test tool collar with bearings left in the hole. Back to bottom with junk basket.

8/09/19: 5,298' drilling. Ran open hole logs. Condition hole to run 4 1/2" production csg.

Deviation Surveys: 0.25deg @ 648', 0.75deg. @ 1,149', 0.75deg. @ 1,633', 1.0deg. @ 2,187', 1.0deg. @ 2,655', 1deg. @ 3,193, 0.75deg. @ 3,793', 0.5deg @ 5,037', 0.75 @ 5,320'.

Bit Record:

#1 12 1/4" RR out @ 648'.

#2 7 7/8" 527G in @ 648' out @ 5,037'.

#3 7 7/8" RR Verl HA28 in @ 5,037 out @ 5,320'.

Drilling time commenced: @ 4,200'. Maximum 10' wet and dry samples commenced: @ 4,250' to RTD 5,320'. Samples delivered to Kansas Geological Sample Library at Wichita, Kansas.

Gas Detector: Blue Stem unit #5259. Digital Unit, commenced @ 4,200'.

Mud System: Mud-Co/Service Mud. Chemical Gel system @ 3,793', Mud Engineer: Justin Whiting (Dodge City Office).

Open Hole Testing; Trilobite Testing. Matt Smith (Pratt).

Open Hole Logs: ELI Logging, Hays Kansas,
Logging Engineer: Gus Pfanenstiel.
DIL, CDL/CNL/PE, MEL/SON.

Sample tops are placed on this Plotted Geo. Report, with the reference wells "A" Sandyland 1-27 1980' FSL, 1230' FWL Sec 27-28S-23W, & "B" Sandyland 2-27 395' FSL, 90' FWL Sec 27-28S_23W. E-log tops datum differences shown.

This log must be shifted up 2' for correlation purposes with the open hole E-logs. RTD is 5,320', open hole E-log depth is 5,320'.

DSTs

DST 1 Pawnee 5,011' - 5,037' (26'), 30-60-60-120, IH 2451, IF 26-48 BOB 3min, Built to 131inch. (NGTS), FSI 412 (No Blow), FF 50-88 BOB immd, Built to 348 inch. (NGTS), FSI 412 (Weak 1/4" Blow, GTS 50min TSTM), Gas did burn, FH 2383. REC: 4841' GIP, 45' GSOCM (24%G, 3%O, 73%M), 64' GMWCO (5%G, 86%O, 7%W, 2%M), 64' GMWCO (59%G, 30%O, 8%W, 3%M), BHT 108 F, OG 37.8 API, No Water CHL Taken.

DST #2 Lower Penn, MRW 5,084' - 5,189', 30-60-60-90, IH 2478, IF 29-32 BOB 3min (NGTS), ISI 505 (No Blow), FF 31-41 BOB immd (NGTS), FSI 503 (No Blow), FH 2469 REC: 3,611' GIP, 50' GM (2%G,98%M), BHT 109 F.

DST #3 Miss, 5,199' - 5,236' (37'), 45-90-90-120, IH 2483, IF 72-137, BOB 30sec, GTS 32min, (1/4' ck, 35-168mcf, 40-170mcf, 45-170mcf), ISI 547 (Weak Blow Built to 1/4"), FF 54-167, GTS immd, (1/8" ck 20-16mcf, 30-22mcf, 40-29mcf, 50-36mcf, 60-43mcf, 70-50mcf, 1/4" ck 80-206mcf, 90-184mcf), FSI 660 (Weak Blow Build to 1/8" - 1/4"), FH 2435, Rec: 5,108 GIP, 31' GOSM (3%G,97%M), 63' GOSM (15%G, 85%M), BHT 108 F.

Qualifiers

CARBONATE CLASSIFICATION:

AFTER DUNHAM: GRAIN; any fossil, fossil fragment, sand grain, or other rock fragment within the rock. **MUDSTONE;** muddy carbonate rocks containing less than 10% grains. **WACKESTONE;** mud supported carbonate rocks with more than 10% grains. **PACKSTONE;** grain supported muddy carbonate rocks. **GRAINSTONE;** mud free carbonate rock, grain supported. **BOUNDSTONE;** carbonate rock bound together at deposition (coral, etc.). **CRYSTALLINE CARBONATE;** carbonate rock retaining to little of their depositional texture to be classified.

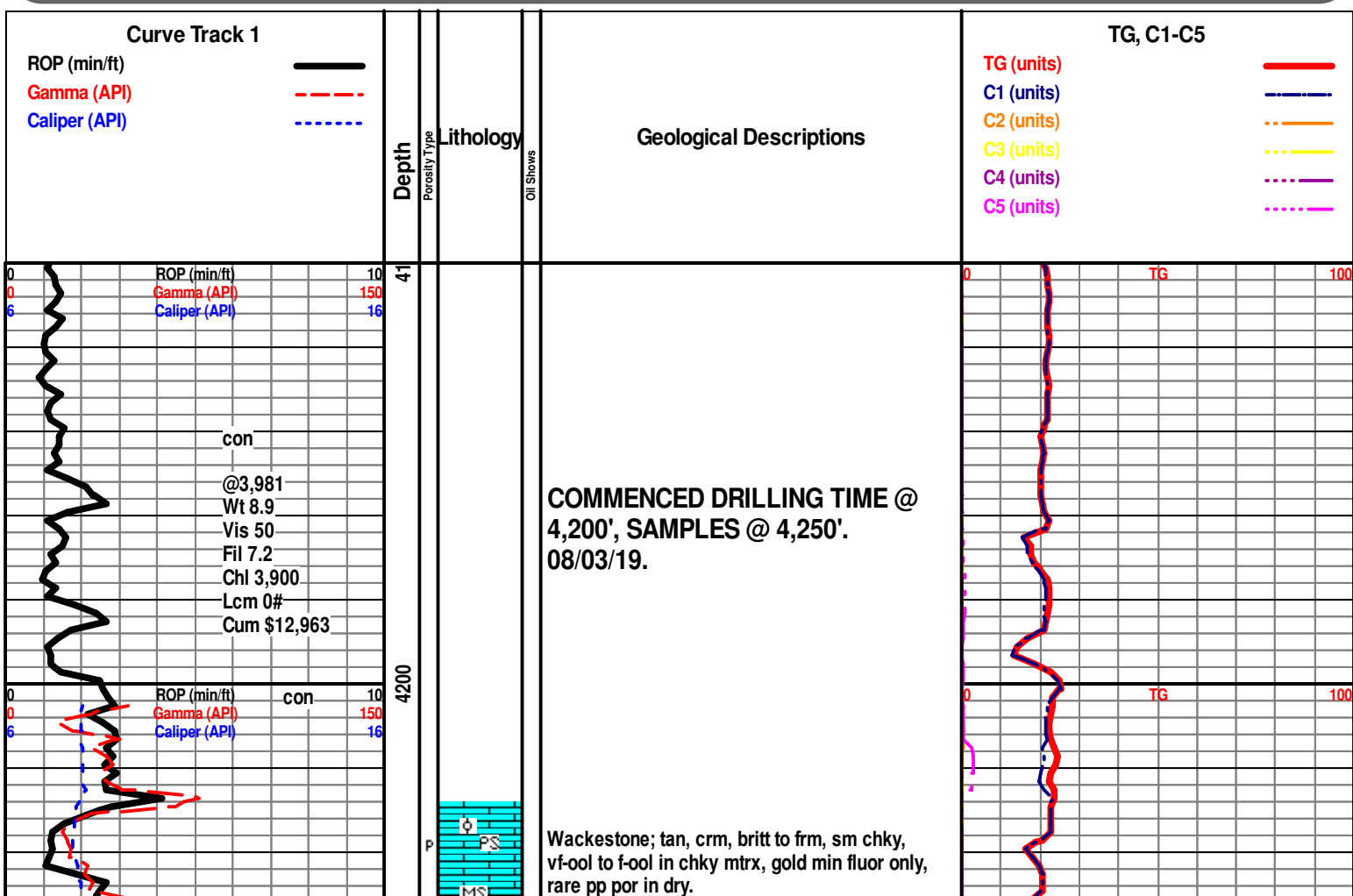
Qualifiers; (Fossils, Minerals, Shows, Porosity, etc.) Rare = less than 1% of sample total, Trace = less than 5% of sample total, Greater than 5% an estimate of total percentage.

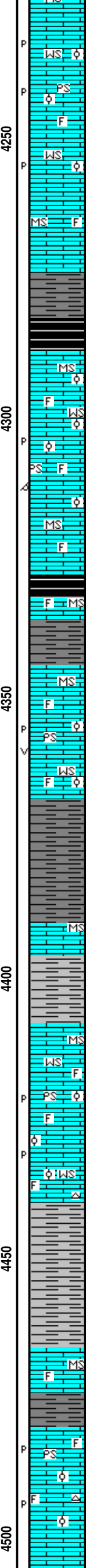
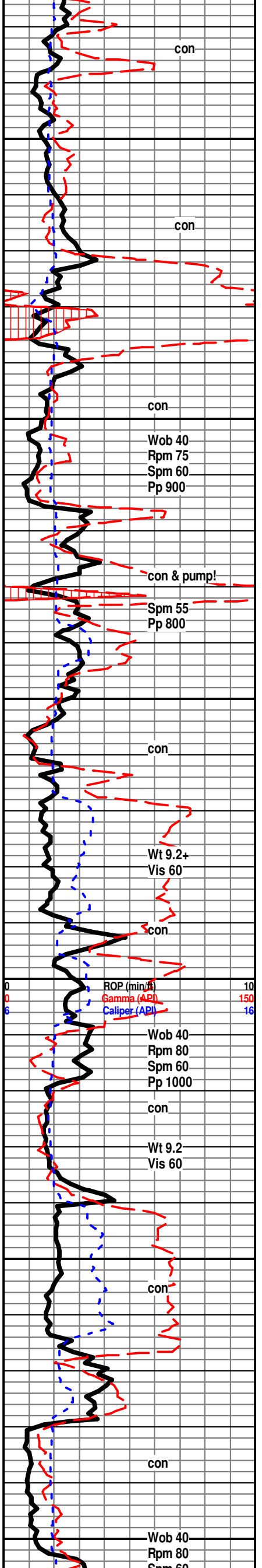
ROCK TYPES

<ul style="list-style-type: none"> Anhy Bent Brec Cht Clyst Coal 	<ul style="list-style-type: none"> Congl Sdy dolo Shy dolo Dol Gyp Sdy lmst 	<ul style="list-style-type: none"> Lmst Mrlst Salt Shale Sltst Ss 	<ul style="list-style-type: none"> Black sh Gry sh Shale Shyslts Sltys
--	---	---	--

ACCESSORIES

<p>MINERAL</p> <ul style="list-style-type: none"> Anhy Arg Bent Bit Brecfrag Calc Carb Chtdk Chtlt Dol Ferrpel Ferr Glau Gyp Marl Nodule Phos Pyr Salt Sandy Silt 	<ul style="list-style-type: none"> Chlorite Dol Sand Silty <p>FOSSIL</p> <ul style="list-style-type: none"> Algae Amph Belm Bioclst Brach Bryozoa Cephal Coral Crin Echin Fish Foram Fossil Gastro Oolite Ostra 	<ul style="list-style-type: none"> Pelec Peloidal Pisolite Plant Strom Fuss Oomoldic <p>STRINGER</p> <ul style="list-style-type: none"> Anhy Arg Bent Coal Dol Gyp Ls Mrst Sltstrg Ssstrg Carbsh Clystn Dol 	<ul style="list-style-type: none"> Grysh Gryslt Lms Sandylms Sh Sltstn <p>TEXTURE</p> <ul style="list-style-type: none"> Boundst Chalky Cryxln Earthy Finexln Grainst Lithogr Microxln Mudst Packst Wackest
--	--	--	--





Mudstone; off wh, chky-sft. Wackestone; tan, crm vf-ool to mic-ool, sm foss frag, rare brn pp por.

Wackestone; AA, Packstone; lt gry, hrd frm, med-ool to f-ool, no show, dull gold min fluor aa, rare brn pp por.

Wackestone; tan-crm, hrd to sft, dull to silky luster, no show.

Mudstone; crm-tan, hrd, sm-foss to mic-ool, dull to silky luster.

Shale; influx, gry to drk gry, sm blk-carb, most sft-rthy text, samples wash gray here.

Mudstone; gry-htd, sm foss frag, crm off wh-chky.

Wackestone; crm to tan, hrd-sft, chky, mic-ool to mic-foss in tt looking mtrx-wet.

Packstone; crm to gry hrd ot sft, chky to xln, f-ool to mic-ool, sm mic-foss frag, dull min fluor, NS or por in wet. rare pp and oom por in dry-NS.

Mudstone; crm to gry, chky-sft, silky-htd, sm foss.

Heeb. 4329 (-1801) A-2 B-6

Slt inc in Blk-carb shale AA.

Mudstone; brn-gry, hrd, xln, slt foss.

Shale; slt inc, gry to drk gry, sft to frm, rthy text.

Mudstone; gry to crm, chky to xln.

Packstone; crm, britt to frm, chky to xln mtrx, f-ool to mic-ool, tt look wet, NS no vis por wet, min fluor only. rare pp and vgy por in dry-NS.

Shale; slt inc in % gry to drk gry, most sft-rthy text, occ gry-grn to brick red-cave?

Mudstone; tan to crm, chky-xln, dns.

Shale; gry-frm, rthy to silky text.

Mudstone / Wackestone; crm, tan occ brn, chky-xln, sm foss, tt.

Packstone Wackestone; tan, lt brn, foss frag and vf-ool in silky tt looking mtrx-wet, NS, rare brn pp por in dry, min fluor only, NS dry.

Wackestone; crm, tan, mic-foss, mic-ool inprt, dns look wet and dry.

Shale; gry, gry-grn, sft to britt, pllty

Shale; gry, gry-grn inc sft-rthy text.

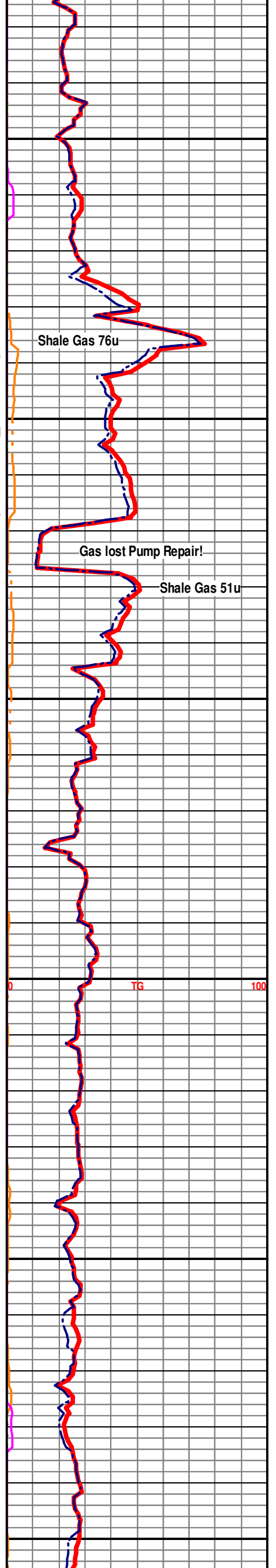
BL 4467 (-1939) A-2 B-6

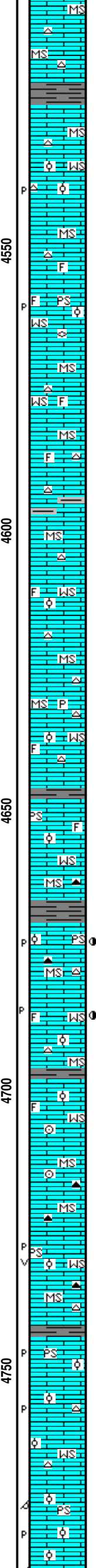
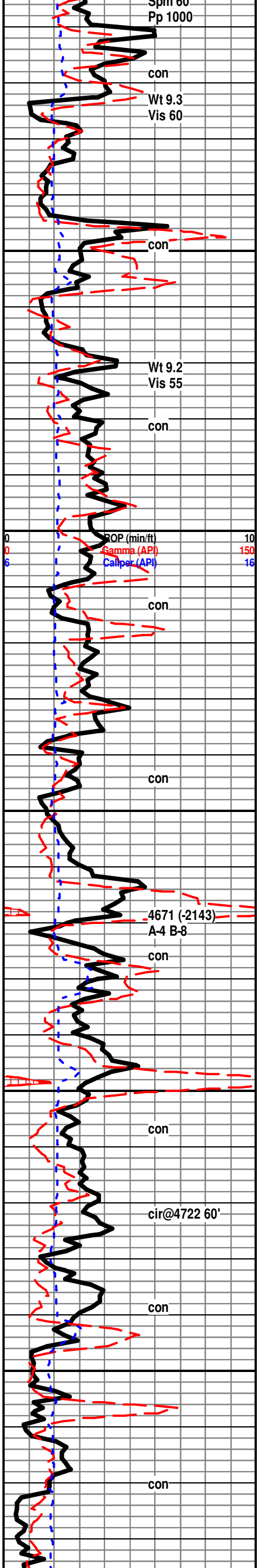
Mudstone; tan to brn, sm drk brn, foss inprt, dns.

Shale; gry to drk gry, tab-sft, plty-frm.

Lans. 4480 (-1952) A-2 B-8

Packstone; crm to lt tan, mic-ool to occ vf-ool, min fluor only, no vis por or show in wet, rare brn pp por in dry, NS, Chert; rare free off wh.





Mudstone; tan to lt brn, hrd, xln, dns, slky text, Chert; trace free off wh.

Shale; slt inc in drk gry to blk, sft to frm.

Mudstone; tan to crm, chky, dns, rare mic-ool
Packstone rare drk wormy stn, no show-cave?
Chert; rare wh.

Wackestone; crm to tan, sm lt gry, mic-ool, britt, chky, NS, rare blk wormy stn-NS, rare Packstone; w/fair brn pp por, NS, Chert; off wh to lt gry.

Mudstone; crm, gry, occ brn, chky-xln, sm foss, sm calc inclu.

Wackestone / Packstone; crm, tan, sm gry, mic-ool, vf-ool in tt looking mtrix-wet, rare fuss frag in mtrx, tt looking wet, rare samp w/fair brn pp por in dry, NS.

Mudstone; crm-chky, tan to brn dns xln, sm Wackestone; mic-ool. Chert; trace free wh to lt gry.

Mudstone; small inc in gry and brn, xln-chky, Chert; trace free gry, brn, sm spicu to foss.

Shale; sm influx, gry, dk gry.

Mudstone; crm, brn, hrd, ckky to xln, sm mic-ool inprt, tt no show.

Wackestone; crm, off wh, mic-ool, vf-ool, sm foss frag inprt, tt look wet, min fluor NS.

Mudstone; crm to brn, chky to xln, slky tt dns, sm brn hrd-blky rare calc inclusions. rare free chert and pyrite.

Wackestone; crm, tan, mic-ool, tt look wet, NS,

Shale; gry to drk gry.

Packstone to Wackestone; crm, off wh, sm tan, mic-ool, to ooc vf-ool in tt mtrx wet, no show, min fluor only.

Shale; gry-gry sm mott, sm blk-carb look

Wackestone to Packstone; crm, tan, hrd xln to sft - chky, mic-ool, spty droplets of brn oil on scat pp por, dull yell fluor, inst cut, no odor, no free oil

Shale; drk gry, gry, sm blk-carb.

Wackestone; crm to tan, mic-ool, tt look wet, dull min fluor, no show, Packstone; rare off wh f to med ool in tt looking mtrx, rare tan f-ool Packstone in tt mtrx, dull min fluor only, no show.

Mudstone; crm, brn, chky-xln, slky to dull chky text, rare crinoid frag and blk free chert.

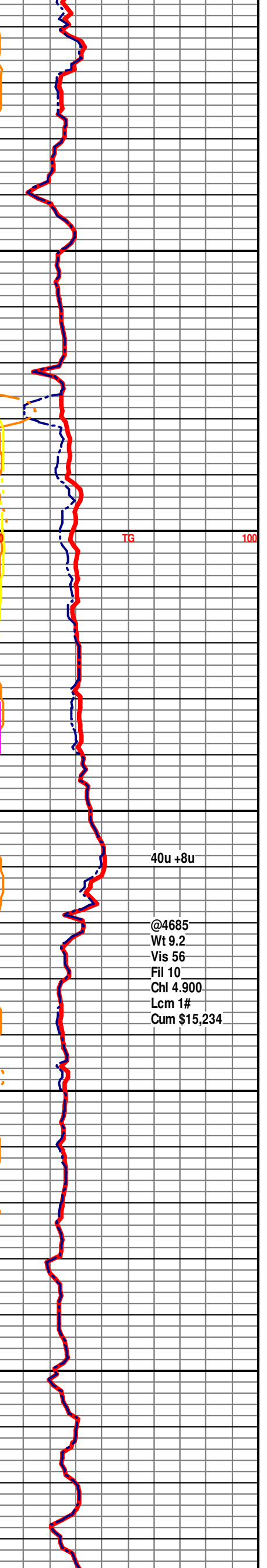
Packstone / Wackestone; tan to crm, off wh, mic-ool in tt looking mtrx-wet, NS, rare sample w/ fair brn pp, vgy por in dry, NS.

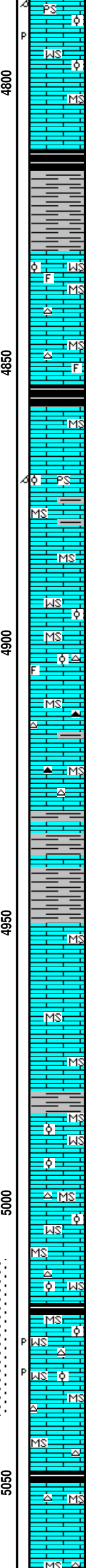
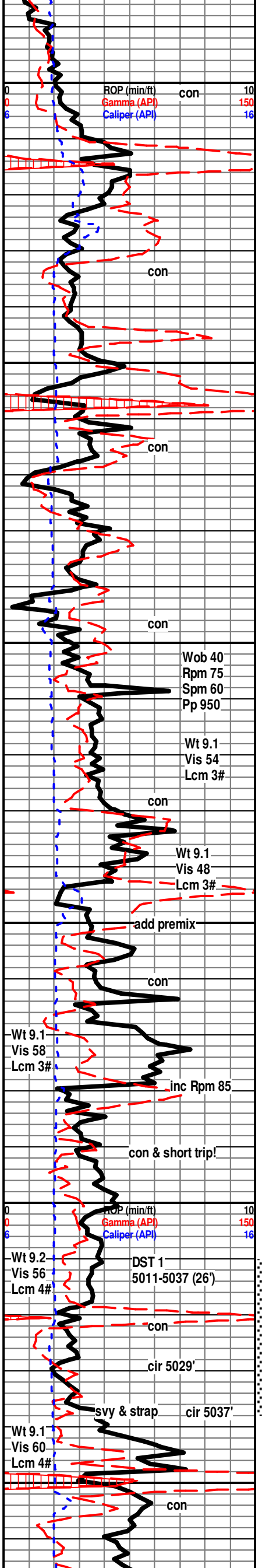
Mudstone; crm, tan, chky-xln, rare free gry and blk chert.

Packstone; tan, crm, mic-ool to scat off wh w/med ool, tt looking mtrx in wet, min fluor only, no vis por wet, rare ban pp por in dry, no stn.

Wackestone; crm to tan, mic-ool, tt look, no vis por in wet or dry, NS.

Packstone; crm, tan, occ off wh, slky to chky mtrx, med-ool to vf-oolm scatt oom, hrd-britt, sm fri imprt, NS wet or dry.





Wackestone; crm to tan, mic-ool, chky to xln mtrx, tt look NS.

Mudstone; tan to crm, sm brn-dns.

Stark 4812 (-2284) A-7 B-12

Shale; influx gry, dk gry, sm blk-carb look, tr brick red, sft to britt, most pty, 10% - 15% shale here.

Wackestone; crm to tan, mic-ool to mic-foss, tt, chky-xln mtrx.

Mudstone; crm to tan, sm off wh, tt, chky-xln, rare free lt chert.

Mudstone; brn, gry, hrd, dns, rare foss frag in tray.

Hushp. 4854 (-2326) A-5 B-15

Mudstone; brn, hrd-dns, xln mtrx.

Packstone; crm, off wh, sm tan, vf to med ool, occ oom, no show wet or dry.

Mudstone; crm to gry, brn, some mic-ool, dns, Shale; inc in drk gry and vry-hrd blk-mrly-cave?

Wackestone; crm to gry, mic-ool, hrd, dns looking no show.

Mudstone; crm to tan, hrd frm, foss to mic-ool inprt, sm crm-chky sft, free gry to lt chert.

Mudstone; inc in gry to brn, xln dns, sft inc in drk gry to blk shales, rare free drk gry chert.

Mudstone; gry-hrd dns, silky-xln, crm aa sm mic-ool, trace brn, hrd, silky-xln, trace black free chert.

Shale; gry, dk gry, sm gry-grn, sm mott, sft-frm, pty to tabular, rthy to smth text.

Marmaton 4950 (-2422) A-9 B+2

Mudstone; crm to tan, xln-hrd, chky-sft, gry to brn, hrd xln-dns.

Mudstone; crm to tan, silky-xln to chky, gry to brn hrd to vry hrd dns, silky-xln text.

Mudstone; crm, tan to gry, frm-hrd, trace crm-tan silky-vry hrd blk.

Shale; gry, dkr gry, blk, rare colored, sft-frm, sm hrd, smth to rthy text.

Mudstone AA, sm Wackestone tan, crm, mic-ool, tt, cave.

Wackestone; crm, off wh, mic-ool, tt look wet, dull min fluor, NS.

Mudstone / Wackestone; crm to tan, chky-sft, sm hard, xln-hrd, Wackestone inprt, 2 smaples brt fluor, no cut.

Pawnee 5021 (-2493) A-8 B-1

Mudstone; crm, brn, chky-sft, xln-hrd.

Wackestone; scat crm-tan, mic-ool, tt look wet, most chky text, faint sample odor, rare samples with spty to even fluor, sm w/inst ring cut, no vis oil or gas bub, 1 sample w/ spty drk str-ring cut, rare scatt brn pp por visable in dry only. rare free chert.

LAB. SH 5048 (-2520) A-8 B-3

Mudstone; crm, sft-hrd, most chky, smth-rthy text, brn-xln dns, rare free off wh to lt gry chert, 5% blk carb gsy shale.

Mudstone; aa, Scat mic-ool, mic-foss in tt mtrx, no show.

