

KANSAS CORPORATION COMMISSION
OIL & GAS CONSERVATION DIVISION

Form must be Typed
Form must be signed

TEMPORARY ABANDONMENT WELL APPLICATION

All blanks must be complete

OPERATOR: License#
Name:
Address 1:
Address 2:
City: State: Zip:
Contact Person:
Phone:
Contact Person Email:
Field Contact Person:
Field Contact Person Phone:

API No. 15-
Spot Description:
Sec. Twp. S. R.
feet from N / S Line of Section
feet from E / W Line of Section
GPS Location: Lat: , Long:
Datum: NAD27 NAD83 WGS84
County: Elevation: GL KB
Lease Name: Well #:
Well Type: Oil Gas OG WSW Other:
SWD Permit #: ENHR Permit #:
Gas Storage Permit #:
Spud Date: Date Shut-In:

Table with 7 columns: Conductor, Surface, Production, Intermediate, Liner, Tubing. Rows include Size, Setting Depth, Amount of Cement, Top of Cement, Bottom of Cement.

Casing Fluid Level from Surface: How Determined? Date:
Casing Squeeze(s): to w / sacks of cement, to w / sacks of cement. Date:
Do you have a valid Oil & Gas Lease? Yes No
Depth and Type: Junk in Hole at Tools in Hole at Casing Leaks: Yes No Depth of casing leak(s):
Type Completion: ALT. I ALT. II Depth of: DV Tool: w / sacks of cement Port Collar: w / sack of cement
Packer Type: Size: Inch Set at: Feet
Total Depth: Plug Back Depth: Plug Back Method:

Geological Data:

Table with 4 columns: Formation Name, Formation Top, Formation Base, Completion Information. Rows 1 and 2.

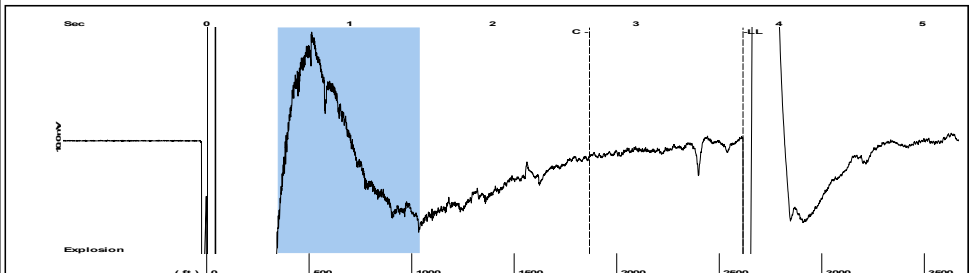
UNDER PENALTY OF PERJURY I HEREBY ATTEST THAT THE INFORMATION CONTAINED HEREIN IS TRUE AND CORRECT TO THE BEST OF MY KNOWLEDGE

Submitted Electronically

Do NOT Write in This Space - KCC USE ONLY
Date Tested: Results: Date Plugged: Date Repaired: Date Put Back in Service:
Review Completed by: Comments:
TA Approved: Yes Denied Date:

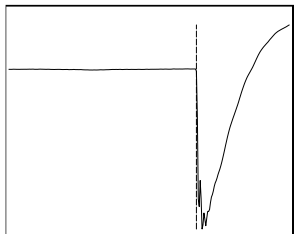
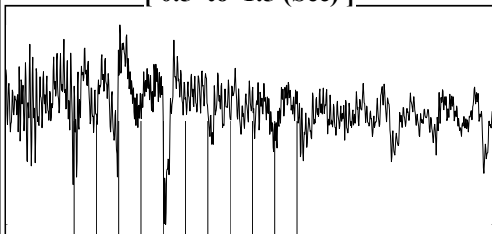
Mail to the Appropriate KCC Conservation Office:

Table with 3 columns: District Office #, Address, Phone. Rows 1-4.

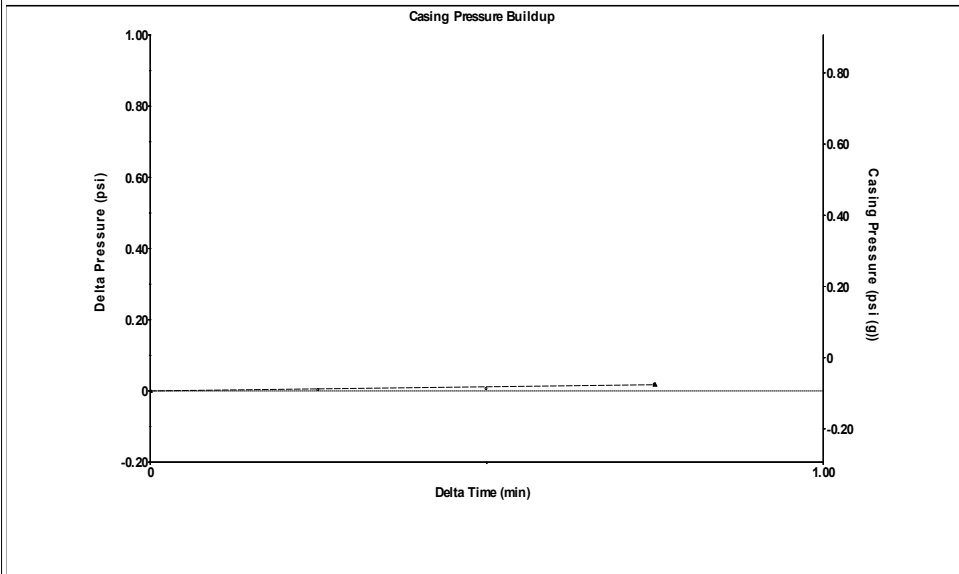


Filter Type High Pass Automatic Collar Count Yes Time 3.749 sec
 Manual Acoustic Veloc 1384.28 ft/s Manual JTS/sec 21.8341 Joints 82.5154 Jts
 Depth 2615.74 ft

[0.5 to 1.5 (Sec)]

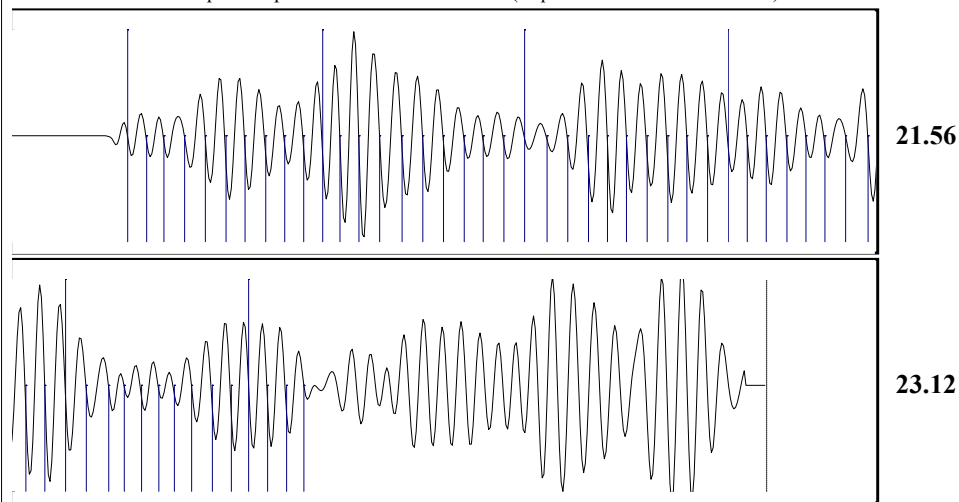


Analysis Method: Automatic



Change in Pressure 0.02 psi PT18514
 Change in Time 0.75 min Range 0 - ? psi

Production	Potential	Casing Pressure	Producing
Current			
Oil - *-	- *- BBL/D	-0.1 psi (g)	
Water - *-	- *- BBL/D	Casing Pressure Buildup	Annular Gas Flow - *- Mscf/D
Gas - *-	- *- Mscf/D	0.017 psi	% Liquid 100 %
		0.75 min	
IPR Method	Vogel	Gas/Liquid Interface Pressure	
PBHP/SBHP - *-	- *-	- *- psi (g)	
Production Efficiency 0.0			
Oil 40 deg.API	Liquid Level Depth		
Water 1.05 Sp.Gr.H2O	2615.74 ft		
Gas 0.61 Sp.Gr.AIR	Pump Intake Depth		
	- *- ft		
Acoustic Velocity 1395.43 ft/s	Formation Depth		
	5400.00 ft		
Formation Submergence			
Total Gaseous Liquid Column HT (TVD)	- *- ft		
Equivalent Gas Free Liquid HT (TVD)	- *- ft		
Acoustic Test			



Acoustic Velocity 1395.43 ft/s Joints counted 53
 Joints Per Second 22.01 jts/sec Joints to liquid level 82.5154
 Depth to liquid level 2615.74 ft Filter Width 19.8341 23.8341
 Automatic Collar Count Yes Time to 1st Collar 0.268 2.676

November 04, 2021

Jose Reyes
American Warrior, Inc.
PO BOX 399
GARDEN CITY, KS 67846-0399

Re: Temporary Abandonment
API 15-187-20392-00-00
WILLIAMS 3
NE/4 Sec.27-30S-41W
Stanton County, Kansas

Dear Jose Reyes:

"Your temporary abandonment (TA) application for the well listed above has been approved. In accordance with K.A.R. 82-3-111 the TA status of this well will expire 11/04/2022.

- * If you return this well to service or plug it, please notify the District Office.
- * If you sell this well you are required to file a Transfer of Operator form, T-1.
- * If the well will remain temporarily abandoned, you must submit a new TA application, CP-111, before 11/04/2022.

You may contact me at the number above if you have questions.

Very truly yours,

Michael Maier"