

KANSAS CORPORATION COMMISSION  
OIL & GAS CONSERVATION DIVISION

TEMPORARY ABANDONMENT WELL APPLICATION

OPERATOR: License# \_\_\_\_\_  
 Name: \_\_\_\_\_  
 Address 1: \_\_\_\_\_  
 Address 2: \_\_\_\_\_  
 City: \_\_\_\_\_ State: \_\_\_\_\_ Zip: \_\_\_\_\_ + \_\_\_\_\_  
 Contact Person: \_\_\_\_\_  
 Phone: ( \_\_\_\_\_ ) \_\_\_\_\_  
 Contact Person Email: \_\_\_\_\_  
 Field Contact Person: \_\_\_\_\_  
 Field Contact Person Phone: ( \_\_\_\_\_ ) \_\_\_\_\_

API No. 15- \_\_\_\_\_  
 Spot Description: \_\_\_\_\_  
 \_\_\_\_\_ - \_\_\_\_\_ - \_\_\_\_\_ - \_\_\_\_\_ Sec. \_\_\_\_\_ Twp. \_\_\_\_\_ S. R. \_\_\_\_\_  E  W  
 \_\_\_\_\_ feet from  N /  S Line of Section  
 \_\_\_\_\_ feet from  E /  W Line of Section  
 GPS Location: Lat: \_\_\_\_\_, Long: \_\_\_\_\_  
(e.g. xx.xxxxx) (e.g. -xxx.xxxxx)  
 Datum:  NAD27  NAD83  WGS84  
 County: \_\_\_\_\_ Elevation: \_\_\_\_\_  GL  KB  
 Lease Name: \_\_\_\_\_ Well #: \_\_\_\_\_  
 Well Type: (check one)  Oil  Gas  OG  WSW  Other: \_\_\_\_\_  
 SWD Permit #: \_\_\_\_\_  ENHR Permit #: \_\_\_\_\_  
 Gas Storage Permit #: \_\_\_\_\_  
 Spud Date: \_\_\_\_\_ Date Shut-In: \_\_\_\_\_

|                  | Conductor | Surface | Production | Intermediate | Liner | Tubing |
|------------------|-----------|---------|------------|--------------|-------|--------|
| Size             |           |         |            |              |       |        |
| Setting Depth    |           |         |            |              |       |        |
| Amount of Cement |           |         |            |              |       |        |
| Top of Cement    |           |         |            |              |       |        |
| Bottom of Cement |           |         |            |              |       |        |

Casing Fluid Level from Surface: \_\_\_\_\_ How Determined? \_\_\_\_\_ Date: \_\_\_\_\_  
 Casing Squeeze(s): \_\_\_\_\_ to \_\_\_\_\_ w / \_\_\_\_\_ sacks of cement, \_\_\_\_\_ to \_\_\_\_\_ w / \_\_\_\_\_ sacks of cement. Date: \_\_\_\_\_  
(top) (bottom) (top) (bottom)  
 Do you have a valid Oil & Gas Lease?  Yes  No  
 Depth and Type:  Junk in Hole at \_\_\_\_\_  Tools in Hole at \_\_\_\_\_ Casing Leaks:  Yes  No Depth of casing leak(s): \_\_\_\_\_  
(depth) (depth)  
 Type Completion:  ALT. I  ALT. II Depth of:  DV Tool: \_\_\_\_\_ w / \_\_\_\_\_ sacks of cement  Port Collar: \_\_\_\_\_ w / \_\_\_\_\_ sack of cement  
(depth) (depth)  
 Packer Type: \_\_\_\_\_ Size: \_\_\_\_\_ Inch Set at: \_\_\_\_\_ Feet  
 Total Depth: \_\_\_\_\_ Plug Back Depth: \_\_\_\_\_ Plug Back Method: \_\_\_\_\_

**Geological Data:**

| Formation Name | Formation Top | Formation Base | Completion Information   |
|----------------|---------------|----------------|--|
| 1. _____       | At: _____     | to _____ Feet  | Perforation Interval _____ to _____ Feet or Open Hole Interval _____ to _____ Feet |
| 2. _____       | At: _____     | to _____ Feet  | Perforation Interval _____ to _____ Feet or Open Hole Interval _____ to _____ Feet |

UNDER PENALTY OF PERJURY I HEREBY ATTEST THAT THE INFORMATION CONTAINED HEREIN IS TRUE AND CORRECT TO THE BEST OF MY KNOWLEDGE

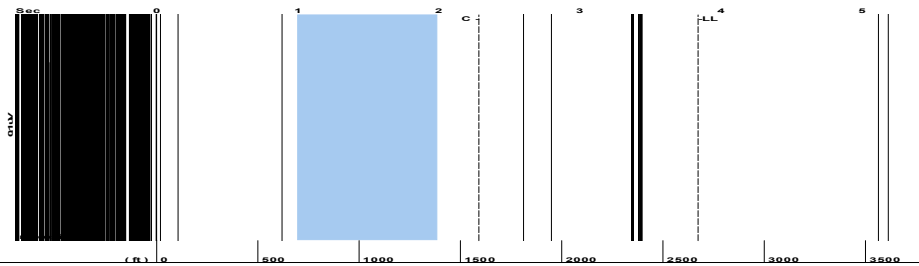
Submitted Electronically

|   |  |                |                     |                      |                                 |
|---|--|----------------|---------------------|----------------------|---------------------------------|
| <b>Do NOT Write in This Space - KCC USE ONLY</b>                                      | Date Tested: _____                         | Results: _____ | Date Plugged: _____ | Date Repaired: _____ | Date Put Back in Service: _____ |
|   | Review Completed by: _____ Comments: _____ |                |                     |                      |                                 |
| TA Approved: <input type="checkbox"/> Yes <input type="checkbox"/> Denied Date: _____ |  |                |                     |                      |                                 |

Mail to the Appropriate KCC Conservation Office:

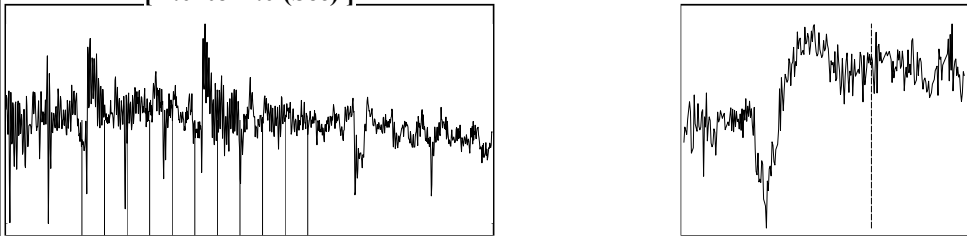
|  |  |                    |
|--|--|--------------------|
|  | KCC District Office #1 - 210 E. Frontview, Suite A, Dodge City, KS 67801               | Phone 620.682.7933 |
|  | KCC District Office #2 - 3450 N. Rock Road, Building 600, Suite 601, Wichita, KS 67226 | Phone 316.337.7400 |
|  | KCC District Office #3 - 137 E. 21st St., Chanute, KS 66720                            | Phone 620.902.6450 |
|  | KCC District Office #4 - 2301 E. 13th Street, Hays, KS 67601-2651                      | Phone 785.261.6250 |

Group: MyWells Well: D S MCVICKER 1-18 (acquired on: 11/01/21 13:08:52)



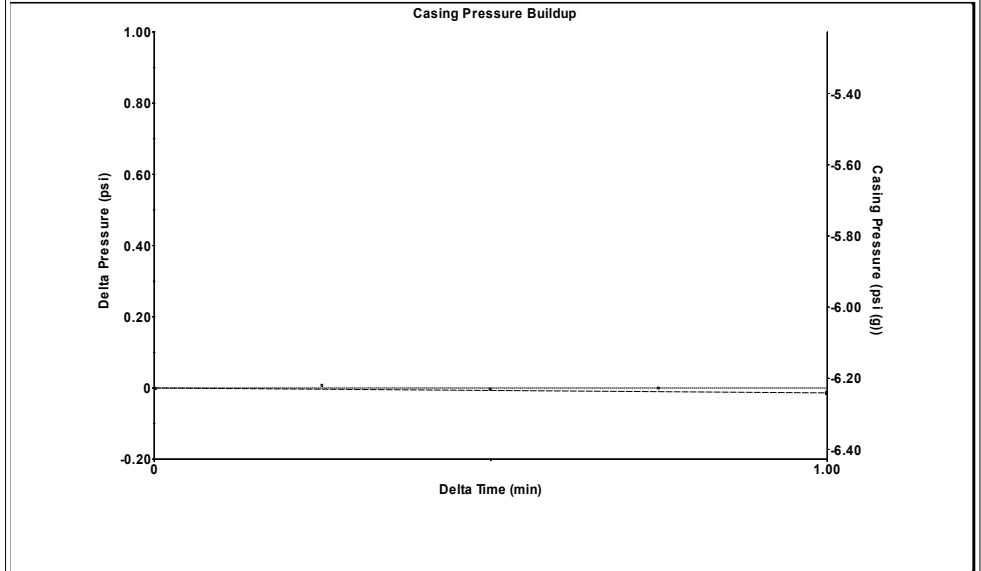
Filter Type High Pass Automatic Collar Count Yes Time 3.838 sec  
 Manual Acoustic Veloc 1366.38 ft/s Manual JTS/sec 21.5517 Joints 84.3197 Jts  
 Depth 2672.93 ft

[ 1.0 to 2.0 (Sec) ]



**Analysis Method: Automatic**

Group: MyWells Well: D S MCVICKER 1-18 (acquired on: 11/01/21 13:08:52)

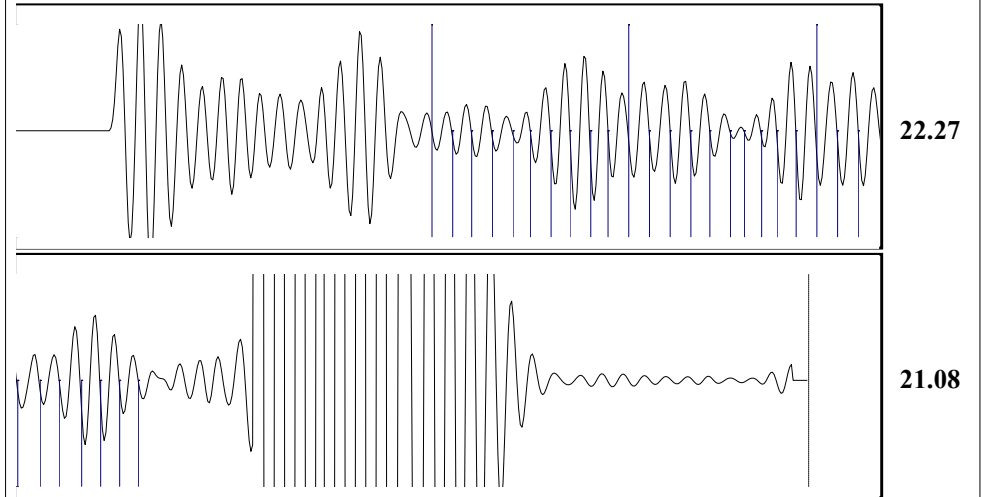


Change in Pressure -0.01 psi PT12098  
 Range 0 - ? psi  
 Change in Time 1.00 min

Group: MyWells Well: D S MCVICKER 1-18 (acquired on: 11/01/21 13:08:52)

|                                      |                |                               |        |                         |         |                  |              |
|--------------------------------------|----------------|-------------------------------|--------|-------------------------|---------|------------------|--------------|
| <b>Production</b>                    |                | <b>Potential</b>              |        | <b>Casing Pressure</b>  |         | <b>Producing</b> |              |
| Oil                                  | - * -          | - * -                         | BBL/D  | -6.2                    | psi (g) | Annular          |              |
| Water                                | - * -          | - * -                         | BBL/D  | Casing Pressure Buildup |         | Gas Flow         | - * - Mscf/D |
| Gas                                  | - * -          | - * -                         | Mscf/D | -0.014                  | psi     | % Liquid         | 100 %        |
|                                      |                |                               |        | 1.00                    | min     |                  |              |
| IPR Method                           | Vogel          | Gas/Liquid Interface Pressure |        | - * -                   | psi (g) |                  |              |
| PBHP/SBHP                            | - * -          |                               |        |                         |         |                  |              |
| Production Efficiency                | 0.0            |                               |        |                         |         |                  |              |
| Oil                                  | 40 deg.API     | Liquid Level Depth            |        |                         |         |                  |              |
| Water                                | 1.05 Sp.Gr.H2O | 2672.93                       | ft     |                         |         |                  |              |
| Gas                                  | 0.62 Sp.Gr.AIR | Pump Intake Depth             |        |                         |         |                  |              |
|                                      |                | - * -                         | ft     |                         |         |                  |              |
| Acoustic Velocity                    | 1392.88 ft/s   | Formation Depth               |        |                         |         |                  |              |
|                                      |                | 4600.00                       | ft     |                         |         |                  |              |
| Formation Submergence                |                |                               |        |                         |         |                  |              |
| Total Gaseous Liquid Column HT (TVD) |                | - * -                         | ft     |                         |         |                  |              |
| Equivalent Gas Free Liquid HT (TVD)  |                | - * -                         | ft     |                         |         |                  |              |
| Acoustic Test                        |                |                               |        |                         |         |                  |              |

Group: MyWells Well: D S MCVICKER 1-18 (acquired on: 11/01/21 13:08:52)



Acoustic Velocity 1392.88 ft/s Joints counted 29  
 Joints Per Second 21.9697 jts/sec Joints to liquid level 84.3197  
 Depth to liquid level 2672.93 ft Filter Width 19.5517 23.5517  
 Automatic Collar Count Yes Time to 1st Collar 0.964 2.284

November 04, 2021

Jose Reyes  
American Warrior, Inc.  
PO BOX 399  
GARDEN CITY, KS 67846-0399

Re: Temporary Abandonment  
API 15-135-25614-00-00  
D S MCVICKER 1-18  
SE/4 Sec.18-20S-25W  
Ness County, Kansas

Dear Jose Reyes:

"Your temporary abandonment (TA) application for the well listed above has been approved. In accordance with K.A.R. 82-3-111 the TA status of this well will expire 11/04/2022.

- \* If you return this well to service or plug it, please notify the District Office.
- \* If you sell this well you are required to file a Transfer of Operator form, T-1.
- \* If the well will remain temporarily abandoned, you must submit a new TA application, CP-111, before 11/04/2022.

You may contact me at the number above if you have questions.

Very truly yours,

Michael Maier"