

KANSAS CORPORATION COMMISSION
OIL & GAS CONSERVATION DIVISION

TEMPORARY ABANDONMENT WELL APPLICATION

OPERATOR: License#
Name:
Address 1:
Address 2:
City: State: Zip:
Contact Person:
Phone:
Contact Person Email:
Field Contact Person:
Field Contact Person Phone:

API No. 15-
Spot Description:
Sec. Twp. S. R.
GPS Location: Lat: Long:
Datum: NAD27 NAD83 WGS84
County: Elevation:
Lease Name: Well #:
Well Type: Oil Gas OG WSW Other:
SWD Permit #: ENHR Permit #:
Gas Storage Permit #:
Spud Date: Date Shut-In:

Table with 7 columns: Conductor, Surface, Production, Intermediate, Liner, Tubing. Rows include Size, Setting Depth, Amount of Cement, Top of Cement, Bottom of Cement.

Casing Fluid Level from Surface: How Determined? Date:
Casing Squeeze(s): to w / sacks of cement, to w / sacks of cement. Date:
Do you have a valid Oil & Gas Lease? Yes No
Depth and Type: Junk in Hole at Tools in Hole at Casing Leaks: Yes No Depth of casing leak(s):
Type Completion: ALT. I ALT. II Depth of: DV Tool: w / sacks of cement Port Collar: w / sack of cement
Packer Type: Size: Inch Set at: Feet
Total Depth: Plug Back Depth: Plug Back Method:

Geological Date:

Table with 4 columns: Formation Name, Formation Top, Formation Base, Completion Information. Rows 1 and 2.

UNDER PENALTY OF PERJURY I HEREBY ATTEST THAT THE INFORMATION CONTAINED HEREIN IS TRUE AND CORRECT TO THE BEST OF MY KNOWLEDGE

Submitted Electronically

Do NOT Write in This Space - KCC USE ONLY
Date Tested: Results: Date Plugged: Date Repaired: Date Put Back in Service:
Review Completed by: Comments:
TA Approved: Yes Denied Date:

Mail to the Appropriate KCC Conservation Office:

Table with 3 columns: District Office, Address, Phone. Rows for District Office #1, #2, #3, #4.

General

Well ID
 Company
 Operator
 Lease Name
 Elevation
 Production Method
 Dataset Description

Sternberger B # 4
 Woolsey Operating
 - * -
 - * -
 0.00 ft
 Rod Pump

Comment

Surface Unit

Manufacturer
 Unit Class
 Unit API Number
 Measured Stroke Length
 Rotation
 Counter Balance Effect (Weights Level)
 Weight Of Counter Weights

OILWELL
 Conventional
 C-456-305-144
 108.474 in
 CW
 - * - Klb
 2000 lb

Prime Mover

Motor Type
 Rated HP
 Run Time
 MFG/Comment

Gas
 20 HP
 24 hr/day
 - * -

Tubulars

Tubing OD
 Casing OD
 Average Joint Length
 Anchor Depth
 Kelly Bushing

2.875 in
 5.500 in
 32.700 ft
 4622.00 ft
 12.00 ft

Pump

Plunger Diameter
 Pump Intake Depth
 Polished Rod Diameter

2.250 in
 4905.00 ft
 1.250 in

Rod String

Rod Type
 Rod Length
 Rod Diameter
 Rod Weight

Top Taper
 K
 225.00
 1.500
 1469.2

Taper 2
 D
 2125.00
 0.750
 3449.8

Taper 3
 D
 2525.00
 0.875
 5585.3

Taper 4
 D
 - * -
 - * -
 0.0

Taper 5
 - * -
 - * -
 0.0

Taper 6
 - * -
 - * -
 0.0

in
 ft
 in
 lb

Total Rod Length
 Total Rod Weight
 Damp Up
 Damp Down

4875
 10504.30
 0.04905
 0.04905

Conditions

Pressure

Static BHP
 Static BHP Method
 Static BHP Date

1043.9 psi (g)
 Acoustic
 07/14/2015

Production

Oil Production
 Water Production
 Gas Production
 Production Date

5 BBL/D
 20 BBL/D
 10.0 Mscf/D
 01/27/2015

Producing BHP
 Producing BHP Method
 Producing BHP Date
 Formation Depth

80.2 psi (g)
 Acoustic
 11/01/2021
 4830.00 ft

Temperatures

Surface Temperature
 Bottomhole Temperature

70 deg F
 150 deg F

Surface Producing Pressures

Tubing Pressure
 Casing Pressure

- * - psi (g)
 56.4 psi (g)

Fluid Properties

Oil API
 Water Specific Gravity

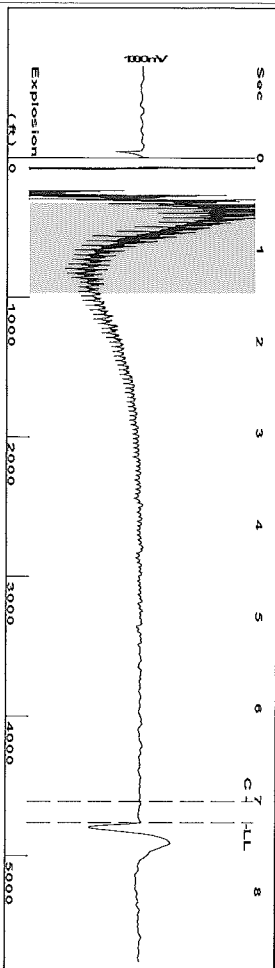
40 deg API
 1.05 Sp.Gr.H2O

Casing Pressure Buildup

Change in Pressure
 Over Change in Time

0.2 psi
 1.00 min

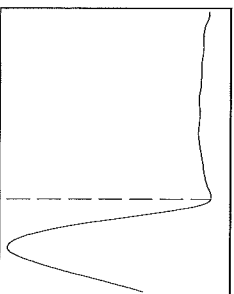
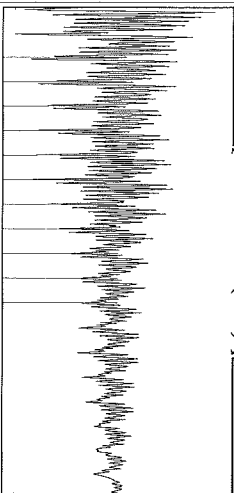
Group: MyWells Well: Sternberger B # 4 (acquired on: 11/01/21 15:24:10)



Filter Type High Pass
Manual Acoustic Vel 1295.05 f/s
Automatic Collar Count Yes
Manual JTS/sec 19.802

Time 7.25 sec
Joints 145.686 Jts
Depth 4763.92 ft

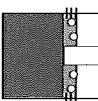
0.5 to 1.5 (Sec) |



Analysis Method: Automatic

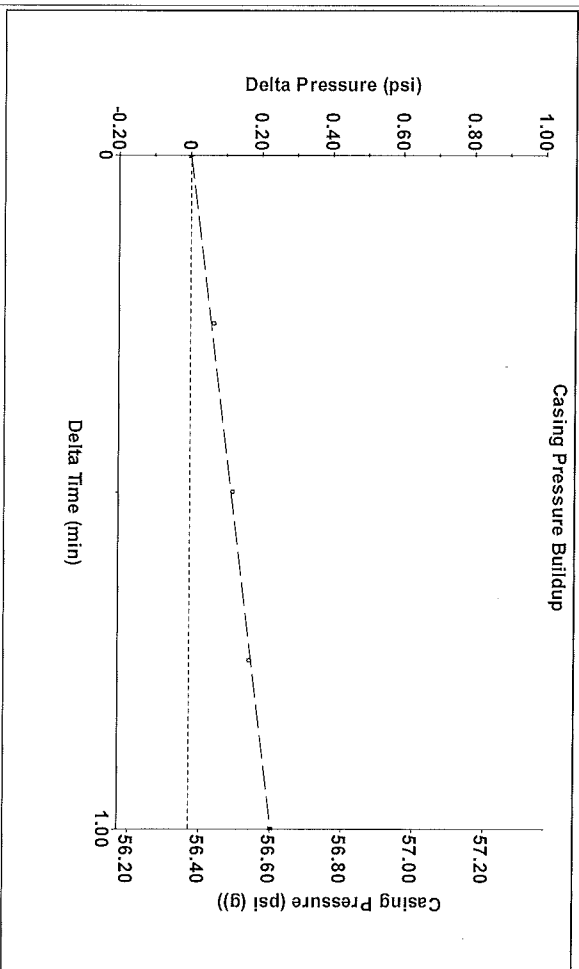
Group: MyWells Well: Sternberger B # 4 (acquired on: 11/01/21 15:24:10)

Production	Potential	Casing Pressure	Producing
Oil 5	5.1 BBL/D	56.4 psi (g)	Annular Gas Flow
Water 20	20.5 BBL/D	Casing Pressure Buildup 0.2 psi	% Liquid 70 %
Gas 10.0	10.2 Mscf/D	1.00 min	9 Mscf/D
IPR Method	Vogel	Gas/Liquid Interface Pressure 64.6 psi (g)	
PBHP/SBHP	0.09		
Production Efficiency	97.6		
Oil 40 deg API		Liquid Level Depth 4763.92 ft	
Water 1.05 Sp.Gr.H2O		Pump Intake Depth 4905.00 ft	
Gas 0.69 Sp.Gr.AIR		Formation Depth 4830.00 ft	
Acoustic Velocity	1314.18 f/s		



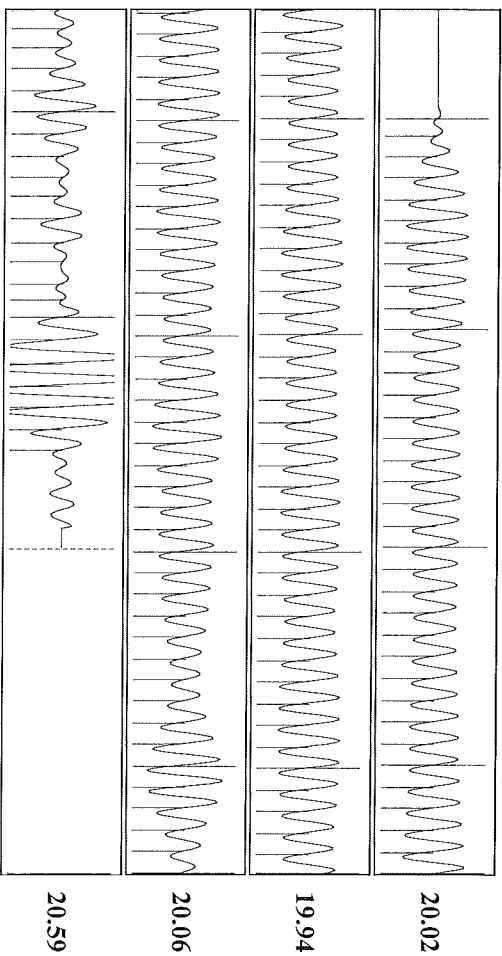
Formation Submergence
Total Gaseous Liquid Column HT (TV/D) 141 ft
Equivalent Gas Free Liquid HT (TV/D) 121 ft
Acoustic Test
Pump Intake 105.4 psi (g)
Producing BHP 80.2 psi (g)
Static BHP 1043.9 psi (g)

Group: MyWells Well: Sternberger B # 4 (acquired on: 11/01/21 15:24:10)



Change in Pressure 0.23 psi
Change in Time 1.00 min
PT 18820
Range
0 - ? psi

Group: MyWells Well: Sternberger B # 4 (acquired on: 11/01/21 15:24:10)



Acoustic Velocity 1314.18 f/s
Joints Per Second 20.0946 Jts/sec
Depth to Liquid Level 4763.92 ft
Automatic Collar Count Yes
Joints counted 136
Joints to liquid level 145.686
Filter Width 17.802
Time to 1st Collar 7.02

November 10, 2021

DEAN PATTISSON
Woolsey Operating Company, LLC
125 N MARKET STE 1000
WICHITA, KS 67202-1729

Re: Temporary Abandonment
API 15-007-24259-00-00
STERNBERGER B 4
SW/4 Sec.12-35S-12W
Barber County, Kansas

Dear DEAN PATTISSON:

"Your temporary abandonment (TA) application for the well listed above has been approved. In accordance with K.A.R. 82-3-111 the TA status of this well will expire 11/10/2022.

- * If you return this well to service or plug it, please notify the District Office.
- * If you sell this well you are required to file a Transfer of Operator form, T-1.
- * If the well will remain temporarily abandoned, you must submit a new TA application, CP-111, before 11/10/2022.

You may contact me at the number above if you have questions.

Very truly yours,

Michael Maier"